

Tshombe Reacts Katanga Ready To Oppose UN

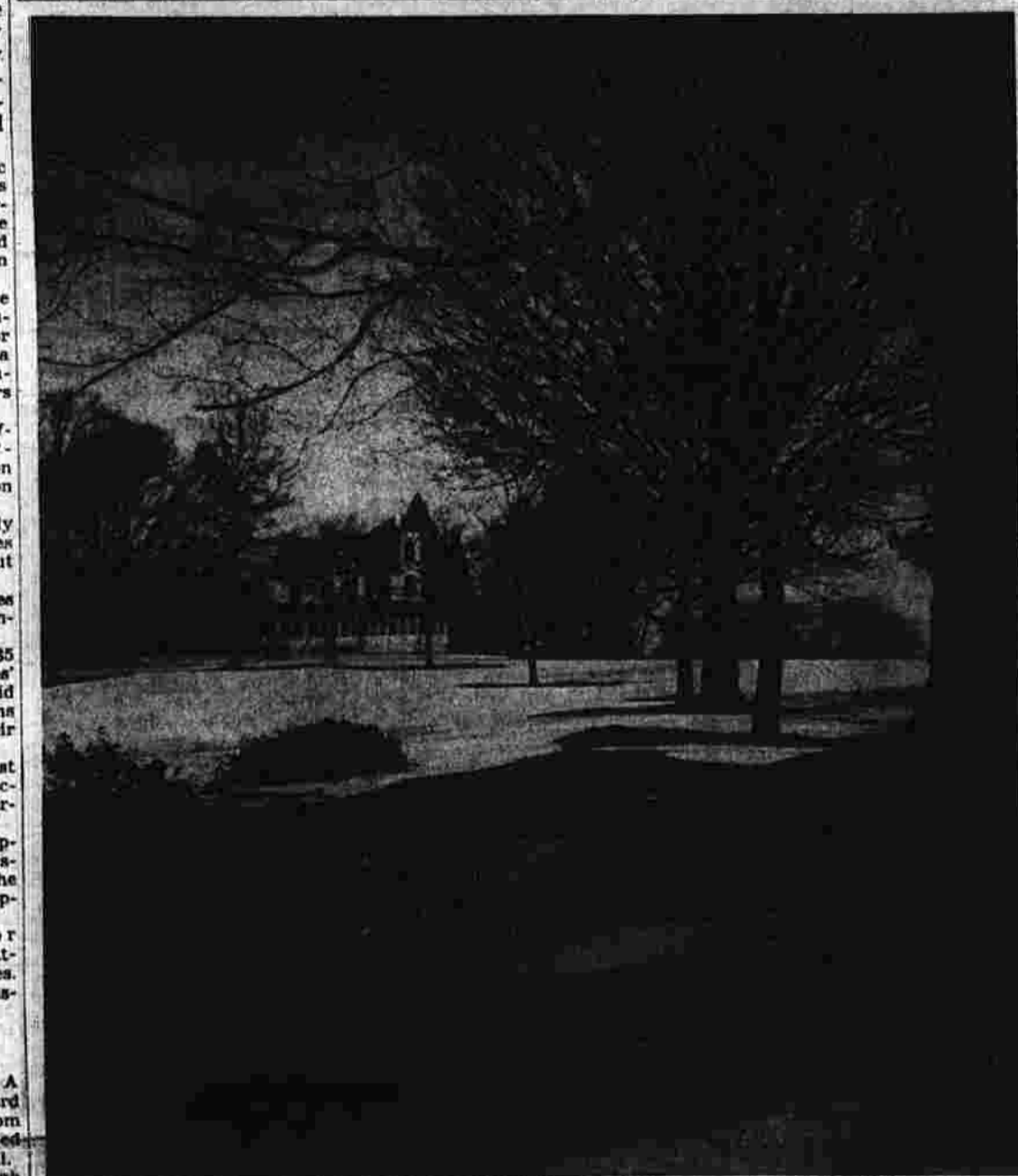
Elisabethville, Katanga, Feb. 21 (AP)—President Moise Tshombe today called U.N. troops enemies today and ordered mobilization of all able-bodied Katangans in his running feud with the United Nations.

State News Roundup

Labor Seeking Sunday Closing For Big Chains

Hartford, Feb. 21 (AP)—Labor union spokesmen have urged the General Assembly to strengthen the Sunday closing law and to pass legislation ordering mercantile establishments to close on legal holidays.

Three Astronauts Selected For Final Space Training



First Manned Flight Slated in 3 Months

Cape Canaveral, Fla., Feb. 21 (AP)—The United States today selected three astronauts to begin final training for a manned rocket flight expected in two or three months.

Space Capsule Successful in Roughest Test

Cape Canaveral, Fla., Feb. 21 (AP)—The United States tried out its space capsule today under the worst possible conditions for the return to Earth and officials quickly reported a man apparently could have survived.

Reds Bow to Afro-Asians

UN Council Votes Congo Peace Plan

By WILLIAM N. OATIS United Nations, N.Y., Feb. 21 (AP)—The Russians bowed to the pressure of Asian and African opinion today and permitted Security Council approval of a resolution authorizing the United Nations to use force if necessary to prevent civil war in the Congo.

Traders Brace For Tomorrow And Huge Sale

Hear Ye! Hear Ye! All ye citizens of Manchester and surrounding areas, the "Big" sale day of the year has arrived. George Washington's Birthday White Elephant Sale begins at 9 a.m. tomorrow.

Hartford Tax Up

Hartford, Feb. 21 (AP)—A 1.5 mill increase in the Hartford tax rate, effective April 1, from 47.7 to 49.2 mills, has been adopted unanimously by the city council.

School Bus Ruling

Washington, Feb. 21 (AP)—Opponents of a Connecticut law allowing communities to use public funds for transportation of parochial school students have been turned down by the U.S. Supreme Court.

Wickham Park Plans Announced

The Wickham house at Manchester-East, Hartford town line on the turnpike is a familiar site to residents of the two towns. And those residents eventually will have use of the 12-acre estate on which plans for the park development were announced today.

Kennedy for Speed On 16 Major Bills

Washington, Feb. 21 (AP)—President Kennedy today gave Democratic congressional leaders a list of 16 bills he wants to have priority in the legislative program. It is topped by extension of unemployment compensation.

Bill Would Ease Local Zoning Laws To Assist Elderly

(By THE ASSOCIATED PRESS) A bill that would allow elderly persons to build houses that did not meet local zoning regulations was supported today by builders but opposed by spokesmen for planning groups.

News Tidbits Culled from AP Wires

Japan offers hungry Communist China rice and other food as a humanitarian gesture. Sen. Carl T. Curtis, R-Neb., wants to turn Senate subway tunnel into art gallery.

Strike Shuts 3 Major Airlines

New York, Feb. 21 (AP)—Three of the nation's largest airlines were shut down completely today as a result of a flight engineers' wildcat strike that has caused the greatest strike in American aviation history.

Soviet Reaction Awaited U.S. Proposes Neutral Screen All Laos Aid

Washington, Feb. 21 (AP)—The United States is ready to submit all future aid to the royal Laotian government to the screening of a neutral nations' watchdog commission.

Bulletins from the AP Wires

BURMESE MOB U.S. EMBASSY BANGOR, Burma, Feb. 21 (AP)—The army was called in today to disperse a mob of 10,000 demonstrators outside the U.S. Embassy. Three policemen and 35 demonstrators were injured.



"To see so much going for so little, is hard to believe," said the Merchant Traders in union today as they were seen coming through the deep woods with their Washington's Birthday White Elephant Sale booty. Stores open at 9 a.m. tomorrow for the biggest, single day event of the year.

21

21



Oldsmobile F85

Many Design Changes In 1961 Oldsmobile

The 1961 Oldsmobile Dynamic 88, Super 88 and 98's in 18 different models incorporate the greatest changes in styling and design to be introduced by the division in many years, according to Jack P. Wolfman, vice president of General Motors and general manager of Oldsmobile.

Many people who need, want and are accustomed to the beauty, comfort, utility and prestige of a full-line Oldsmobile. "The smaller F85, Oldsmobile's entry in the low-price field," he continued, "will attract the many people who have always wanted an Oldsmobile but never thought they could afford one up until now."

Retirement: Happy Times

By HARRY DARR

Useful Work Best Time For Aging Mind and Body. "Active housewives attend the funerals of their late, retired husbands."

Delighting in the recent White House Conference on Aging held this from Dr. George B. Burch, who thinks that workers should be allowed and encouraged to go on working without penalty.

"I am a widow, age 72. My husband worked for a company from 1918 to 1937. In 1948 he died of heart trouble. Please inform me if I can qualify for social security under the new rules."

City Hall to Branch. San Antonio - Branch City Health, each with district headquarters for garbage and sewer service. City inspectors and public health nurses, are to open soon in San Antonio. Labor police and fire district officials and tax assessors and collectors will also move in.

Kennedy for Speed On 16 Major Bills. (Continued from Page One) The other bills on the 16-point list were: The support and control program for food grants. Increasing the \$1 minimum Federal aid to education. Health care for the aged under social security. Aid for college education. Federal aid for expansion of research. Aid for medical education and research. Federal support for expansion of community health facilities. Extension of the Government Reorganization Act. Ratification of U.S. affiliation with the Organization for Economic Cooperation and Development. Creation of 56 new Federal judgeships. Establishment of an office of international travel.

Chevrolet Adds Eight To Corvair Family

A brilliant selection of one of the most versatile lines of passenger and commercial cars ever produced, interest in the Corvair has been stimulated by station wagon, a novel sports wagon, a four-door Monza and three commercial units which extend the benefits of easy maneuverability and fine riding qualities to the commercial field. Unique leading arrangements match the pioneering spirit of engineering innovations which have proved so practical in the small car field.

HALL FOR RENT. For parties, showers, meetings, etc. Inquire Lithuanian Hall 54 GOWAY STREET. TEL. MI 2-5164. MI 2-2430 After 6 P.M.

Kennedy for Speed On 16 Major Bills

The House acts before it reveal: 1. Aid for depressed areas. Kennedy said he expects to bring a bill for the aid of depressed areas before the Senate next week. Sen. Paul Douglas, D-Ill., said a banking subcommittee he heads will wind up hearings on a measure with testimony next Tuesday from Secretary of Commerce Robert C. Anderson, Secretary of Labor Arthur J. Goldberg and Secretary of Agriculture Orville L. Freeman.

Miss Daunt Feted At Bridal Shower

Miss Mariamne Daunt, daughter of Mr. and Mrs. Arthur Daunt, 108 Walker St., was feted at a miscellaneous shower recently at the home of Mrs. Roland Quetta and her daughter, Miss Bonnie Lee Wyman, 18 Desford St.

AL Women List Coming Events

The Americanism essay contest, sponsored by the American Legion Auxiliary, will be held again this year in Manchester schools, according to Mrs. Theodora Fairbanks, Americanism chairman.

Potluck Precedes Meeting of OES

Temple Chapter, Order of Eastern Star, will observe Fast Mothers and Fast Fathers night tomorrow at 8 p.m. at the Masonic Temple.

White Elephant SALE

13 CASHMERE SWEATERS \$2 Value \$16.00

97 Pr. NYLON HOSE 22c Value \$1.25

91 Wool Glove and Cap Sets \$2 Value \$5.00

ON THE HOUSE SPECIALS - we're saving some of our best bargains for the late shoppers; every hour bargainers will be announced over the loud speaker!

ALL WOOL LADIES' COATS \$22 Values to \$50

GOOD ASST. HANDBAGS \$1.22 Regularly to \$5

GIRLS' PILE LINED JACKETS \$7.92 Values to \$12.99

NYLON SLIPS 2 for \$5 Ledge Trimmed Regularly \$3.99

GIRLS' WOOL SHETLAND SWEATERS \$1.92 Regularly \$4.99

Gordon Peters BLOUSES 2 for \$3 \$1.59 Made to sell for twice as much

TODDLERS' OVERALLS 92c Regularly \$2.99

HALF SLIPS 92c Nylon Trimmed Value \$2

LADIES' BRASSIERES 92c Regularly \$2

Bulky SWEATERS \$3.22 Regularly \$5.99

260 RAYON PANTIES 22c Value 68c

43 Famous Make GIRDLES 22c Value \$7.99

41 Pr. SLACKS 22c Values to \$7.99

32 DRESSES \$1.22 Values \$12.99

Rockville-Yernon Branches Avoid Issue Red Cross Officers Say

A revelation of "astounding ignorance" and "masterly avoidance of the issue" were labels given today to yesterday's statement from Red Cross officers in the Hartford area who called on Nathan Hale chapter officers to reconsider their announced resignations.

WE CANNOT TELL A LIE...

YOU CAN OWN A BUICK FOR LESS THAN MOST MODELS IN THE LOW-PRICE FIELD!

Come in Washington's Birthday—see what makes Buick Special the best buy in town!

Surprised... that you can own a Buick for less than most models in the low-price field? Well, price is just one of many surprises of the Buick Special. For example...

The Special's new 155-h.p. aluminum V-8 and aluminum transmission... you Buick go-with gas savings that challenge the compact! You get Buick comfort... for six-footers. Buick "all-day" ride. Buick pride—the Clean Look of Action and Body by Fisher. Come try the Special—you'll really have something to celebrate!

BUICK SPECIAL

SEE WHY BUICK SPECIAL IS GETTING THE ACTION—AT THESE BUICK DEALERS

YOUR QUALITY BUICK DEALER IN MANCHESTER IS: **BOURNE BUICK, INC.** 285 MAIN ST.

NOW! Get the buy of your lifetime at our WASHINGTON'S BIRTHDAY RAMBLER SALE!!!



SAVE AT LEAST \$212.00* to begin with!

YOU SAVE AT LEAST \$212* to start with. You get the best of both: big car room and performance, compact car economy and handling ease. In fact, Rambler offers more comfort for six-footers than any car in the old "low-price" field.

RAMBLER EXCELLENCE COSTS HUNDREDS LESS!

We New Englanders are famous for knowing solid value when we see it. That's why, in New England, sales of Rambler—the car that started the trend to compact—have more than tripled in the past 3 years!

Yes—that's what it takes to reach the next bond payment level in Rambler's Customer Progress Sharing Program. Already, \$4,124 U.S. Savings Bonds have been sent to December buyers. But because this program is cumulative and retroactive, current buyers can receive bonds if February deliveries total 43,769 cars.

RAMBLER—the new world standard of basic excellence

Come Save Today at Our OPEN HOUSE! Share in Rambler's Success!!!

OPEN ALL DAY WASHINGTON'S BIRTHDAY FEBRUARY 22nd

DOUBLE STAMPS every WEDNESDAY!

CHOICE, JUICY STEAKS \$1.29

Short Rib 1 lb \$1.29

Boneless CLUB 1 lb \$1.29

Individual Steaks—Perfect Treat for Holiday Meals!

NANCY LYNN CHERRY PIE NOW 55c SAVE 10c

GRAND UNION DELUXE CAKE MIXES 2 1/2 lb. pkgs. 43c

U.S. No. 1 GRADE—SIZE "A" POTATOES 25 lb. bag 79c

YUBAN INSTANT COFFEE 6 oz. jar 97c

FIRST QUALITY 51-15 GAUGE GRAND NYLONS 2 pair 99c

SAVE CASH AND STAMPS!

DeCORMIER MOTOR SALES, Inc. 285 BROAD STREET—MANCHESTER, CONN.

PRICES EFFECTIVE WED., FEB. 22 ONLY. WE RESERVE THE RIGHT TO LIMIT QUANTITIES. MANCHESTER SHOPPING PARKADE. 287 1/2 BROAD STREET, MANCHESTER, N.H.

New Compact Lancer In 1961 Dodge Lineup

The Dodge Ramp includes the brand new compact Lancer: the low-price, standard size Dart, and the handsome, low-medium-price Pacer.

"For the 1961 model year we are providing a wider choice of cars designed to fit virtually every pocketbook and to meet the needs of almost every motorist," Byron J. Nichols, Dodge general manager, said.

"Dodge dealers are offering a selection of 14 sedan models, 35 station wagons, 9 hardtops, and 7 convertibles, plus a number of models built especially for fleet buyers."

Nichols said this is the second consecutive year that Dodge has expanded its line "to meet the specific needs of a larger segment of the American car-buying public." He said Dodge dealers now market cars in the price classes where 93 per cent of the U.S.-built automobiles are sold.

In the fall of 1959, Dodge entered the low-price field with its popular Dart. Now Dodge has included the compact car field with the Lancer. Prior to introduction of the 1960 model, Dodge marketed only medium-price cars.

Nichols said the Lancer is "an economy car designed for budget-minded families — from young people just starting married life to older couples living on retirement income."

He said the Lancer is also ideal for two- and three-car families. "We believe the Lancer is just the car for all those trips to school, the supermarket, PTA and the golf course," he said. "The lady of the house especially likes the Lan-

Your Pocketbook

Current Register Applies Only
If the Buyer Allows It to Purchase or Service of a Product, the Installation Charge Is \$2.00. In any investment you may have made, it's about 100 to 1 that the fault is yours.

Are you aware of the watchdog agencies — some government sponsored, some private — that exist to protect you and your interests? Are you aware that invariably this advice is to be had for free?

There are now more than 100 Better Business Bureaus throughout the U.S., sponsored by 100,000 firms who spend some \$5 million annually to guard against unfair business practices. About a half dozen new bureaus will be opened in 1961. These are the headquarters for your complaint on any product that does not give the promised performance, on any service not performed according to contract.

Bureaus are constantly against false advertising, deceptive pricing and deals promising you the free or almost free installation of a product that does not give the promised performance, on any service not performed according to contract.

There are state laws ruling on the charges that may be asked when you borrow from a finance company or buy on the installment plan. Usually the top service fee permitted is a yearly maximum of 10 per cent on each \$100 of the unpaid balance on amounts of these stocks.

The National Association of Securities Dealers guards all unlisted on any exchange.

If you are solicited to participate in any stock market operation and you have the slightest doubt about the integrity of the solicitor, a check with a local well known brokerage firm or with your local banker can help you from becoming entangled in a worthless proposition.

Do your business with companies and individuals whose names you know and respect.

(All rights reserved, Newspaper Enterprise Assn.)

Mercury

Mercury for 1961 substantially increases its coverage of the low-price field by introducing two all new lines—the Meteor 600 and the Meteor 800.

"The dramatically lower price of the new Mercury Meteor places it squarely into competition in the low-price field," it was announced by Ben D. Mills, Ford Motor Co. vice president and general manager of the Lincoln-Mercury Division.

"We have completely re-styled and engineered our products to compete in the low-price volume market," Mr. Mills said. "We have shortened our cars by 4-1/2 inches and made them 1-1/2 inches narrower, yet we have retained Mercury's interior comfort, riding qualities and luxury styling."

The move down into the low-price field marks a wide departure from Mercury's traditional competition in the medium-price market. The Mercury line for 1961, which consists of 14 models, is identified as the Meteor 600 series, which is priced with the middle series in the low-price field; the Monterey series, at the top of the line. In addition, there are four Computer and Colony Park station wagons.

For the first time in its history, Mercury will include a six-cylinder engine.

The trim, clean lines of its 1961 models testify to Mercury's continued success in attaining distinctive design. The front end features a sturdy grille with dual headlights which give the appearance of being suspended in the grille.

Two different roof styles are used for sedan models. The Meteor 600 series has a sloping rear glass. All other Mercury sedans and hardtops have a crisp, styled formal type roof with flat rear glass.

Both roof designs incorporate a new moderate wrap-around windshield that eliminates the dogleg protrusion into the front door opening, allowing more entrance room.

Scoring a "first" in the auto industry, Mercury chassis engineers developed a new type of suspension system that gives an unusual smooth ride. This new system, named "cushion-link" by the engineers who developed it, incorporates an entirely new mechanical linkage in both front and rear suspensions. Road bumps and vibrations are absorbed more completely within this suspension, because the wheels are allowed to move slightly rearward as well as upward.

The new Mercury models can be seen at Mercury Park, 315 Center St.

Mercury Competing In Low-Price Field

Mercury for 1961 substantially increases its coverage of the low-price field by introducing two all new lines—the Meteor 600 and the Meteor 800.

"The dramatically lower price of the new Mercury Meteor places it squarely into competition in the low-price field," it was announced by Ben D. Mills, Ford Motor Co. vice president and general manager of the Lincoln-Mercury Division.

"We have completely re-styled and engineered our products to compete in the low-price volume market," Mr. Mills said. "We have shortened our cars by 4-1/2 inches and made them 1-1/2 inches narrower, yet we have retained Mercury's interior comfort, riding qualities and luxury styling."

The move down into the low-price field marks a wide departure from Mercury's traditional competition in the medium-price market. The Mercury line for 1961, which consists of 14 models, is identified as the Meteor 600 series, which is priced with the middle series in the low-price field; the Monterey series, at the top of the line. In addition, there are four Computer and Colony Park station wagons.

For the first time in its history, Mercury will include a six-cylinder engine.

The trim, clean lines of its 1961 models testify to Mercury's continued success in attaining distinctive design. The front end features a sturdy grille with dual headlights which give the appearance of being suspended in the grille.

Two different roof styles are used for sedan models. The Meteor 600 series has a sloping rear glass. All other Mercury sedans and hardtops have a crisp, styled formal type roof with flat rear glass.

Both roof designs incorporate a new moderate wrap-around windshield that eliminates the dogleg protrusion into the front door opening, allowing more entrance room.

Scoring a "first" in the auto industry, Mercury chassis engineers developed a new type of suspension system that gives an unusual smooth ride. This new system, named "cushion-link" by the engineers who developed it, incorporates an entirely new mechanical linkage in both front and rear suspensions. Road bumps and vibrations are absorbed more completely within this suspension, because the wheels are allowed to move slightly rearward as well as upward.

The new Mercury models can be seen at Mercury Park, 315 Center St.

CASH!
Just say the word!

Get the cash you want—in a hurry—with Beneficial's Bill Clean-Up Service.

Just phone! Soon as approved, get cash to clean up bills—including time-payment accounts. Then, make only one payment instead of several... you may have more cash left over each month. "You're the boss" at Beneficial.

Loans \$20 to \$200—Loans 100-1000 at low cost

809 MAIN ST., 2nd Fl., Over Woodworth's, MANCHESTER
NATIONAL BUREAU OF CREDIT FOR THE U.S. MEMBER
OVER 100 YEARS OF SERVICE SINCE 1851
A PLAN OF THIS SERVICE WILL BE SENT FREE UPON REQUEST
No application charge. No security. No collateral.

BENEFICIAL FINANCE CO.

WILLIAM F. QUISH
Financial Service
MANCHESTER, CONN.

Dear friends,

It is now the general practice among the better mortuaries to display prices in plain figures. Our patrons, we find, appreciate the plan.

Those of limited means find it easy to select without embarrassment. Those who desire a higher priced selection may do so, knowing that they are being charged exactly the same as other patrons.

Our plainly marked prices insure absolute fairness.

Respectfully,
Director
W. F. Quish

Nail Has Spiral Shank

New York — On the market today are more than 400 kinds of nails. One of the newest has a spiral shank that turns when driven into wood, reducing the danger of splintering. It is said to be 30 per cent easier to drive than an ordinary nail and to hold nailed pieces together more firmly.

Corduroy's the Thing

A plain corduroy bedspread and patterned corduroy curtains make a happy combination for decorating school quarters. Corduroy comes in beautiful colors, washes easily and needs no ironing.



Dodge Dart

Barrage Balloons Fly

London—World War II barrage balloons were flown over London recently by a company planning a 38-story, 400-foot-tall building. The balloons were flown at the 400-foot height so photographers could get some idea of how the building would look in relation to the London skyline.

A WELL FEATHERED NEST

...IS BUILT BY SYSTEMATIC SAVING!

Well feathered nests don't grow on trees. They have to be BUILT. Foresighted people do most of their "nest-building" in savings here. Your idea of a "well feathered nest" may be anything from a home of your own to financial security for your later years. But whatever it is, the best and surest way to build it is by systematic saving in Manchester's oldest financial institution. Time to start building is NOW! Current annual dividend 3 3/4 %.

Manchester SAVINGS and LOAN
INSURED SAVINGS
MANCHESTER'S OLDEST FINANCIAL INSTITUTION
100 1/2 Main Street, near Maple Street
OPEN UNTIL 5 P.M. MONDAY, TUESDAY AND FRIDAY
WEDNESDAY 9 A.M. to 12 NOON—THURSDAY 9 A.M. to 5 P.M.

BRANCH OFFICE
Route 31
Coventry

Nimble Handling!

Every ounce of excess bulk has been trimmed out. Side overhang has been eliminated. More weight is now spotted between the wheels for better balance. That's why you feel a new nimbleness in this agile new Catalina. Try it today!

PONTIAC—THE ONLY WIDE-TRACK CAR!

NEW BREED OF "CAT" FROM PONTIAC!

Pontiac Catalina!
SEE YOUR LOCAL AUTHORIZED PONTIAC DEALER

PAUL DODGE PONTIAC, Inc.
873 MAIN STREET—MANCHESTER, CONN.

Make a note! See and drive the Pontiac Catalina and the other fine Pontiac cars at our Washington's Birthday Open House! Sample the new Tempest, too—it's the Car of the Year!

MANCHESTER EVENING HERALD, MANCHESTER, CONN., TUESDAY, FEBRUARY 21, 1961

Wickham Park Plans Made

Tentative plans to put a swimming pool, a train for children, picnic grounds, tennis courts, skating ponds and a miniature golf course on the 128-acre Wickham Estate on W. Middle Tpk., all for the use of Manchester and East Hartford residents, have been approved by the executor of the estate.

Work on roads and a picnic area will start soon, but it will be many years before the dream of the late Clarence H. Wickham is realized.

Development and operation of the park will be paid for from interest on his \$2.4 million trust fund.

George Bonason, trust officer for the Hartford National Bank and Trust Co., executor of the trust fund, said yesterday he has approved the development of the area as drawn by Olmsted Brook, landscape architects of Brookline, Mass.

The eventual capacity of the park near the Wilbur Cross Highway will be 2,000 persons. Parking spaces will be provided for 500 cars.

Admission will be free, Bonason said, although there will be nominal charges for some of the areas such as parking, golf and swimming.

He said it will be "many many years" before the park is finished. The first step is to build roads through the tract. Since there are several miles of roads proposed by the landscape architects, the tons of construction will gobble much of the income the first couple of years.

Another major expense will be the installation of water lines, he said. Old wells provide the present water supply.

He is now discussing possible water service with the Metropolitan District Commission of Hartford County, he said. "Electric power is available on the property, although more power might be needed later."

Since so much money will be spent on preparing for use of the property, all of the major facilities will be built later.

Those facilities which do not cost too much to provide will be put in within the next several years, including eight tennis courts, a horse shoe throwing area, the picnic grounds, and four or possibly six softball diamonds.

Some parking areas will be provided.

One is an outdoor swimming pool and bathhouse. This will probably be one of the first of the five major projects to be constructed.

Another is a memorial observation platform commemorating the Wickham family, the memorial platform will be constructed on the highest point of ground, and will have a view of Hartford and the Connecticut Valley on one side and Manchester and Vernon on the other.

A dragon train will be constructed for children. Pulled by an engine resembling a fire-breathing dragon, several little cars will wind around the area where there is an oriental garden and tea house.

A small pond in the area at present, which would interfere with the train's path, will be covered and two other ponds will be scooped out nearer the garden. The ponds will be spring fed.

A chip and putt golf course will be laid out near the entrance to the park on W. Middle Tpk. The course will have nine holes and a practice green.

Cubhouse Eventually

Eventually a clubhouse would be constructed adjacent to the golf course, said Bonason. It would have a porch and some kind of refreshment stand.

One other major facility planned is a double pond for ice skating. One pond is for hockey and one for figure skating. Both are to be scooped out of the earth on the west side of the tract, and both are to be spring fed.

A small cabin, located now on top of the hill where the memorial platform will be, is going to be moved to the ice skating area.

An old windmill on the western part of the park will be left alone, as will the gate houses near the entrances to the property.

"Folks facilities will be provided near the picnic area."

About 105 acres of the land are in Manchester, and 20 acres in East Hartford. The estate has been known as "The Pines" and was owned by the Wickhams before 1924. Clarence Wickham died in 1945, leaving the property to his wife, Mrs. Edith McGraft Wickham, with the stipulation that when she died the land would be developed as a park for the joint use of the two towns.

Mrs. Wickham died June 8, 1960. Bonason said work will proceed slowly for the next couple of years, and plans will be worked out in detail as the projects are completed.

"A quiet, dignified type of family park, with facilities for all ages" is the eventual object, he said.

Administration of the park will be supervised by the bank, he said.

"Two men who have worked for many years for the Wickhams, Charles Donohue and Samuel Feltman, will continue as grounds attendants, carpenters and so forth. Part time help will be hired as it is needed for the next couple of years."

Eventually a full time superintendent will be hired.

The property will remain under the control of the trust fund rather than be turned over to the two towns.

Bonason said he has consulted with park and recreation officials in both Manchester and East Hartford, and will continue to do so, in order to coordinate the program better.

"The Olmsted landscape firm will be retained to draw detailed plans and specifications for the large projects which will be built later."

MEMORIAL OBSERVATION PLATFORM FACING NORTHWEST

SWIMMING POOL AND BATHHOUSE FACING NORTH

Bolton Voters Turn Down School, 645-444

Townsmen defeated a proposal for a junior high school in a referendum yesterday. The vote was 645 to 444. There were 21 ballots left in the voting process.

Sixty-eight per cent of the registered voters turned out to cast their ballots. A total of 78 non-electors also voted on the issue.

The junior high proposal was recommended by the Board of Education and unanimously approved by the Town Planning Commission.

John Harris, chairman of the Board of Education, in a statement yesterday said "I want to thank all the people who supported the educational welfare of our children in yesterday's referendum. I am disappointed the proposal was not accepted as I feel it seriously hampers the educational program of our children."

"The defeat of yesterday's referendum was not a defeat of the junior high but a vote against the location. The Board of Education recommended a minimum program and an economical plan."

"As chairman of the Board of Education I will continue to work with the other members of the board in the best interest of the children for an education they so rightly need and deserve."

40 Donors Blamed

Bolton residents donated 40 pints of blood to the Red Cross Blood Bank yesterday. The Bloodmobile unit was set up at the First Methodist Church. Two people were rejected.

This was the second visit of the unit to Bolton. Last August, 31 pints of blood were donated by townsmen. Seventy-five pints has been set as the quota for each visit.

Elmer Woden, chairman, again wished to thank all donors and workers who made the visit so successful.

Donors by appointment were: Earl H. Nickles, Mrs. Mildred Golden, Mrs. Barbara Arnold Jackson, Mrs. Nancy Warren, William Harris, Mrs. Sue Gordon, Mrs. Dorothy Woden, the Rev. Carlton Daboy, James V. McQueen, Mrs. Shirley Um.

Also Mrs. Jean Chaplin, Mrs. Helen Rogers, Mrs. Harold Post, Harold Hoar, David Knight, William Genski, Mrs. Sarah Stephens, Don Carpenter, James Denny, Mrs. Delores Erickson, Mrs. Emerson, Robert Mortensen, Mrs. Dorothy Zeppa, Charles Zeppa, Thomas M. Carpenter, Myron Sawyer, Horace and Janet Lee.

Wife-in donors were Mrs. Jane Miller, Charles Miller, Mrs. Elizabeth Norris, James Finnegan, Bert Miller, Mrs. Polly Connors, Mrs. Mary Sheridan, Lawrence Converse Jr., Mrs. Arnold Clark, Mrs. Louise Bowditch, Richard Morris, Mrs. Dorothy Abbott, Raymond Negro, Lawrence Fiano, Mrs. Jean Nichols.

Also, Don Gadapan, Francis Pina, Mrs. Susie Daley, Mrs. Doris Barrett, Mrs. Elizabeth Fiano, Harris Hirshman, Mrs. Kathleen Dolin, Harry Goodwin, Anthony Fiano, Richard Dimick, Leslie Spenser, Robert Warfield, Oscar Leonard, Milton Jensen, Alfred Barrett.

Goal Elected

Frederick Gual, commissioner of parks and recreation, has been elected president of the Bolton Junior Baseball program.

Other officers elected were Paul Managetta, staff assistant; to the president; Harold Vogel, first vice president; Emerson Bowditch, second vice president; Marshall Lewis, third vice president; Francis Warren, fourth vice president; T. J. Crockett, secretary-treasurer.

Goal estimates that about 200 boys are interested in this year's baseball program. In the elementary school alone 163 boys are interested.

Letters to previous sponsors of teams have been sent inviting their sponsorship again this season.

MVD to Open Town Branch

A sub-branch office of the State Motor Vehicle Dept. will open in the State Attorney's office in Manchester late in March, according to William J. Hilliard, deputy commissioner of motor vehicles.

Although the exact date has not been determined, Commissioner Hilliard said it will be around March 20 or 21. He said the office will be open for 9 to 10 days. It will not be open on Good Friday, March 21.

Current automobile registrations expire at midnight, March 31.

This is the final year that automobile registrations may be renewed at sub-branch offices. Hereafter, registration renewals will be handled in the same manner as license renewals, with applications being sent to the main unit under a staggered system.

TV-Radio Tonight

Television

6:00 Big 8 Theater (in progress) 10. 11. 12. 13. 14. 15. 16. 17. 18. 19. 20. 21. 22. 23. 24. 25. 26. 27. 28. 29. 30. 31. 32. 33. 34. 35. 36. 37. 38. 39. 40. 41. 42. 43. 44. 45. 46. 47. 48. 49. 50. 51. 52. 53. 54. 55. 56. 57. 58. 59. 60. 61. 62. 63. 64. 65. 66. 67. 68. 69. 70. 71. 72. 73. 74. 75. 76. 77. 78. 79. 80. 81. 82. 83. 84. 85. 86. 87. 88. 89. 90. 91. 92. 93. 94. 95. 96. 97. 98. 99. 100.

Master Councilor

John Krause was elected master councilor of John Mather Chapter, Order of DeMolay, last night at the Masonic Temple.

The son of Mr. and Mrs. Albert Krause, 44 Ridge St., is a former senior councilor.

Other new officers elected are David Hastings, senior councilor; and Allan Ferr, junior councilor. Hastings succeeds Krause in the office, and Ferr succeeds Robert Schultz.

GOP Women Meet At State Capitol

Four members of the Manchester Republican Women's Club attended a meeting of the Connecticut Council of Republican Women's Clubs in the Hall of the House of Representatives at the State Capitol yesterday.

They are Mrs. R. Michael Quish, Mrs. John Pickles, Mrs. Truman A. Crawford and Mrs. Harlan Taylor. Republican women convened in the seats of state representatives at the General Assembly was not in session on Monday.

Among speakers were Edward May, Republican state chairman; Rep. Anthony Wallace, speaker of the House; former Rep. John A. Spurrer of South Methodist Church, who delivered the invocation; Philip Friedman, who introduced the speaker; Philip Harris, president of the Temple Brotherhood, who extended a welcome; William Hooker, president of the men's club of South Methodist Church; Henry Ask, men's club president of Covenant Congregational Church; and the Rev. Elmer Hask of Covenant Church, benefactor of the club.

Men's Clubs View Civil War Items

Dean Alice Cooke Brown of the University of Hartford last night displayed items from her Civil War collection and discussed acts of brotherhood during the War Between the States, at a meeting at Temple Beth Shalom.

The Civil War history expert and member of the Civil War Round Table spoke before 50 members of men's clubs of South Methodist Church, Covenant Congregational Church and Temple Beth Shalom.

Dean Brown showed a copy of "The Liberator" from June 27, 1851, edited by William Lloyd Garrison; abolitionist; a bill of sale amounting to \$442 for a Negro slave from North Carolina, and a copy of a will bequeathing slaves to descendants in 1818 in North Carolina.

She spoke about the devotion of Mrs. Elizabeth Keckley, a Negro who gave up her dressmaking business in Washington, D.C., to help Mary Todd Lincoln, the President's widow, during years of financial hardship. Dean Brown also related incidents of brotherhood involving the "underground railroad" in an organization known as Friends of the Free Soil, met in 1848 in Suffolk, Conn., to oppose slavery, she related.

Entertainment was provided by a woodwind trio from Rockville High School, directed by Samuel Goldfarb, director of instrumental music for Vernon schools.

Others who participated in the program included the Rev. Percy M. Spurrer of South Methodist Church, who delivered the invocation; Philip Friedman, who introduced the speaker; Philip Harris, president of the Temple Brotherhood, who extended a welcome; William Hooker, president of the men's club of South Methodist Church; Henry Ask, men's club president of Covenant Congregational Church; and the Rev. Elmer Hask of Covenant Church, benefactor of the club.

HEART DISEASE Enemy

Give HEART FUND 1 Defense

EXTRA!

Come And Get Acquainted with PILGRIM MILLS --- Cheney Hall, Hartford Rd., Manchester ---

OPEN HOUSE TOMORROW—10 A.M. to 9 P.M.

100,000 Yards of Fabrics For You!

There will be FUN FOR ALL at CHENEY HALL! FREE COFFEE! PRIZES and SURPRISES!

... Come See ... Come Browse -- In A World Of FABRICS -- at LOW, LOW MILL PRICES!

DRAPERY FABRICS 50¢ YARD

WOOLENS \$1.50 YARD

While They Last! COTTON PRINTS 22¢ YARD

RAYON LININGS 22¢ YARD

Buttons 2¢ CARD

ZIPPERS 9¢ EACH

CHENEY HALL, HEADQUARTERS for SILKS, UPHOLSTERY, WOOLENS and DRESS FABRICS SINCE 1925!

OPEN DAILY NOON TILL 9 P.M.—SATURDAYS 10 A.M. to 6 P.M. AMPLIFIED FREE PARKING NEXT DOOR

Herrmanns Feted; Married 40 Years

Mr. and Mrs. Otto H. Herrmann, 213 Center St., were feted at a surprise party Saturday at Three J's Restaurant in Bolton in honor of their 40th wedding anniversary.

Mr. Herrmann and the former Miss Gertrude Mount of College Point, N. Y., were married Feb. 21, 1921, in St. Paul's Episcopal Church, Bolton. The couple has two sons, Sgt. I.C. Robert H. Herrmann, a career soldier stationed with the U. S. Army in Germany, and Charles M. Herrmann of South Coventry, who is employed by Pratt and Whitney Aircraft, and five grandchildren.

The couple also had a daughter, the late Miss Gertrude M. J. Herrmann, who was a piano and organ teacher.

Mr. Herrmann will receive a 30-year pin in December from Pratt and Whitney Aircraft, where he is employed as a quality review inspector. Mrs. Herrmann has been employed at PWA for about 15 years, and works in the spare parts tools office.

Mr. Herrmann, a Republican, was a town constable for 14 years until 1954.

He is a member of Manchester Lodge of Masons, Scottish Rite Lodge, Sphinx Temple, of the Shrine, Young Men's and Tall Order of Lebanon, the Pratt and Whitney Square Club, and the Rockville Lodge of Elks in 1943 and held the office of secretary of the board of trustees during the organization of the Manchester Lodge, of which he is a charter member.

He is also a member of the Town Housing Authority.

Mrs. Herrmann is a member of the Rockville Elks Club, and has been a member of Sussex Lodge, No. 39, since 1930, when she transferred from the College Point lodge.

Mr. Herrmann has been a real estate broker in his spare time for the past seven years. He and Mrs. Herrmann have lived in Manchester since 1930, and both are members of St. Mary's Episcopal Church.

KINGS CLEANERS BASEMENT

AT THEIR PRICES I'M TAKING ALL MY CLEANING TO KING'S

Radio

(This listing includes only those news broadcasts of 10 or 15-minute length. Some stations carry other short newscasts.)

6:30 News 10. 11. 12. 13. 14. 15. 16. 17. 18. 19. 20. 21. 22. 23. 24. 25. 26. 27. 28. 29. 30. 31. 32. 33. 34. 35. 36. 37. 38. 39. 40. 41. 42. 43. 44. 45. 46. 47. 48. 49. 50. 51. 52. 53. 54. 55. 56. 57. 58. 59. 60. 61. 62. 63. 64. 65. 66. 67. 68. 69. 70. 71. 72. 73. 74. 75. 76. 77. 78. 79. 80. 81. 82. 83. 84. 85. 86. 87. 88. 89. 90. 91. 92. 93. 94. 95. 96. 97. 98. 99. 100.

HEART DISEASE Enemy

Give HEART FUND 1 Defense

EXTRA!

Come And Get Acquainted with PILGRIM MILLS --- Cheney Hall, Hartford Rd., Manchester ---

OPEN HOUSE TOMORROW—10 A.M. to 9 P.M.

100,000 Yards of Fabrics For You!

There will be FUN FOR ALL at CHENEY HALL! FREE COFFEE! PRIZES and SURPRISES!

... Come See ... Come Browse -- In A World Of FABRICS -- at LOW, LOW MILL PRICES!

DRAPERY FABRICS 50¢ YARD

WOOLENS \$1.50 YARD

While They Last! COTTON PRINTS 22¢ YARD

RAYON LININGS 22¢ YARD

Buttons 2¢ CARD

ZIPPERS 9¢ EACH

CHENEY HALL, HEADQUARTERS for SILKS, UPHOLSTERY, WOOLENS and DRESS FABRICS SINCE 1925!

OPEN DAILY NOON TILL 9 P.M.—SATURDAYS 10 A.M. to 6 P.M. AMPLIFIED FREE PARKING NEXT DOOR

Washing Machine

Washing Machine

Washing Machine

Washing Machine

Washing Machine

Washing Machine

KINGS

SELF-SERVICE DEPT STORE

Pine St. and Hartford Rd., Manchester

WASHINGTON'S BIRTHDAY Specials

OPEN ALL DAY WED, FEB 22 nd

King's Usual Low Prices are Even Lower ... Greatest Store on Worth!

Boys' All Wool Melton WARM-UP JACKETS 2.99

Sizes 6-16.

Knit collar, cut, waist. Solid colors with contrast trim. Snap button front. Charcoal, royal, maroon, green.

MEN'S QUALITY CHINO PANTS 1.99

30 to 42 Waist.

Heavyweight Army twill. Curved, zip front. Gray or khaki tan. 29 to 34 length. Completely washable.

MEN'S FINE KNIT Banlon SHIRTS 2.97

100% bathlon textured nylon. Wash and wear. Shrink-resistant. Solid color, contrast trim. S-M-L.

SEAMLESS MESH HOSE 47¢

Fully Proportioned

Run-resistant seamless hose in newest spring shade. Sizes 8 1/2 to 11.

WOMEN'S SMART SPRING SKIRTS 1.22

Cottons, rayons, silks. Full styles. Regular and extra sizes.

WOMEN'S SILK BLEND SCARFS 28¢

Ogometric, floral and novelty prints. New spring colors. Regular size.

ROLL-UP SLEEVE WOMEN'S BLOUSES 1.00

Smart tailored blouse in dacron-cotton blend. Sizes 24 to 40.

TOTS' BOXER WAIST SLACKS 77¢

Some with Western design on pockets. Corduroy or flannel. To 30.

PACKAGE OF 12 GAUZE DIAPERS 1.67

Soft and absorbent. All first quality.

MISSES' and WOMEN'S CREPE Pajamas 1.28

3 Smart Styles

Mandarin, classic or butcher boy styles. Short sleeves. Pink, blue, white and prints. Sizes 34 to 40.

MISSES', WOMEN'S Banlon SWEATERS 2.00

Authentic KITTY LABEL

Easy-to-care for, won't shrink or fade. Choice of 10 colors. Sizes 34-40.

WOMEN'S DRIP-DRY COTTON Dusters 1.88

Pretty prints and plaids. Sizes 10-20. Also brunch style. Sizes 16 1/2 to 24 1/2.

FAMOUS NAME ABSORBENT TOWELS 58¢

Bath Size

Hand Size 22¢

Stripes, plaids and solids. Handsome colors. Thick, heavy quality.

ZIPPERED CORDUROY PILLOW COVERS 87¢

Covers bed pillows to make throw or TV pillows.

400 Statler FACIAL TISSUES 3 boxes 49¢

9 PAIR METAL SHOE RACKS 67¢

Plastic tip legs. Chrome plated. Holds 9 pairs shoes.

WOMEN'S and MISSES' RAYON PANTIES 22¢

Band leg and Holywood brief. Full cut sizes 6-7.

KAPOK FILLED THROW PILLOWS 47¢

Large 17 x 17 size. Knife edges. Contrast trim on bottom.

RUBBER BOTTOM and GANOPY SLEEPING BAGS 4.00

36 x 70 Size

100% synthetic fibre-filled. Double lining. Green, water-repellent Tui-Tex top.

Bates Woven JACQUARD SPREAD 3.97

Full and twin sizes. Blue, green, tan, maroon. Washable and colorfast.

BOYS' and GIRLS' STUDY CREPE SOLE SHOES 77¢

Oxfords with cushion crepe rubber soles. Black, grey, red, brown, white. Sizes 8 1/2 to 2.

BOYS' LONG SLEEVE SPORT SHIRTS 1.00

Wash and wear in sizes 6 to 16. Plaids, stripes and patterns.

WOMEN'S SLIPPERS 73¢

Assorted styles and colors. Sizes 4 to 10.

General Electric STEAM 'n DRY IRON 8.88

Actually 2 IRONS IN ONE!

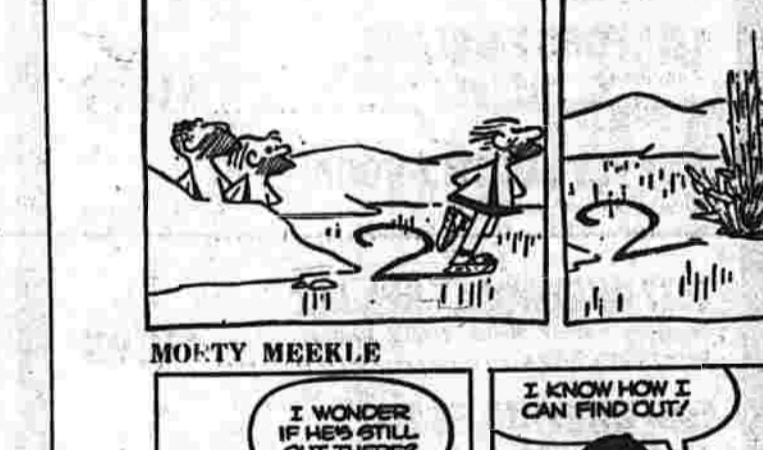
Weghs just 3 lbs. Changes instantly from steam to dry. Dual setting for all fabrics.

BEAUTIFULLY Cleaned and Pressed

MENS TROUSERS LADIES SLAX

OPEN 10 AM - 10 PM

SALE ENDS SATURDAY NIGHT



Author crossword puzzle grid with author names listed.

Author crossword puzzle grid with author names listed.

Author crossword puzzle grid with author names listed.

Author crossword puzzle grid with author names listed.

Author crossword puzzle grid with author names listed.

Author crossword puzzle grid with author names listed.

Author crossword puzzle grid with author names listed.

Author crossword puzzle grid with author names listed.

Author crossword puzzle grid with author names listed.

Monday Birds Differ From Friday Birds
New York (AP)—How you meet Monday is a real test of your character.

Monday Birds Differ From Friday Birds
The busy-fingered Magpie—700 lay to go to the sack room.

Monday Birds Differ From Friday Birds
The late-train Pig Crawler—He flutters in on one wing with hollow eyes and drooping legs.

Monday Birds Differ From Friday Birds
The Moulting Mourning Dove—The chorusing of facing birds of the whole week of labor overhauls him.

Monday Birds Differ From Friday Birds
The Yellow-billed Cuckoo—His head is so strong that 10 minutes after he comes to the office he is on the phone.

Monday Birds Differ From Friday Birds
The Peewee-plumbed Bird-of-Paradise—The office femme fatale tries to bring to the attention of her husband.

Monday Birds Differ From Friday Birds
The Double-breasted Creeper—"What's good about it?" he mutters.

Monday Birds Differ From Friday Birds
The Blue-birded Kingfisher—The junior executive business in

Monday Birds Differ From Friday Birds
The Blue-birded Kingfisher—The junior executive business in

Hal Boyle
Monday Birds Differ From Friday Birds
New York (AP)—How you meet Monday is a real test of your character.

Hal Boyle
Monday Birds Differ From Friday Birds
The busy-fingered Magpie—700 lay to go to the sack room.

Hal Boyle
Monday Birds Differ From Friday Birds
The late-train Pig Crawler—He flutters in on one wing with hollow eyes and drooping legs.

Hal Boyle
Monday Birds Differ From Friday Birds
The Moulting Mourning Dove—The chorusing of facing birds of the whole week of labor overhauls him.

Hal Boyle
Monday Birds Differ From Friday Birds
The Yellow-billed Cuckoo—His head is so strong that 10 minutes after he comes to the office he is on the phone.

Hal Boyle
Monday Birds Differ From Friday Birds
The Peewee-plumbed Bird-of-Paradise—The office femme fatale tries to bring to the attention of her husband.

Hal Boyle
Monday Birds Differ From Friday Birds
The Double-breasted Creeper—"What's good about it?" he mutters.

Hal Boyle
Monday Birds Differ From Friday Birds
The Blue-birded Kingfisher—The junior executive business in

Hal Boyle
Monday Birds Differ From Friday Birds
The Blue-birded Kingfisher—The junior executive business in

You Should Know...
Herbert J. Stevenson
Herbert J. Stevenson, insurance broker, says that the insurance industry is a step closer to operational status with a second straight successful 5,000-mile test flight.

You Should Know...
Herbert J. Stevenson
The Air Force has moved its headquarters to a new building at the Pentagon.

You Should Know...
Herbert J. Stevenson
The Air Force has moved its headquarters to a new building at the Pentagon.

You Should Know...
Herbert J. Stevenson
The Air Force has moved its headquarters to a new building at the Pentagon.

You Should Know...
Herbert J. Stevenson
The Air Force has moved its headquarters to a new building at the Pentagon.

You Should Know...
Herbert J. Stevenson
The Air Force has moved its headquarters to a new building at the Pentagon.

You Should Know...
Herbert J. Stevenson
The Air Force has moved its headquarters to a new building at the Pentagon.

You Should Know...
Herbert J. Stevenson
The Air Force has moved its headquarters to a new building at the Pentagon.

You Should Know...
Herbert J. Stevenson
The Air Force has moved its headquarters to a new building at the Pentagon.

Glazier's Corset Shop
691 MAIN STREET—MI 3-4346—AMPLE PARKING
WASHINGTON'S BIRTHDAY SPECIALS
ALL MERCHANDISE TAKEN FROM REGULAR STOCK

Howard's Sleep Center
530 MAIN STREET—AT THE CENTER
OPEN 9 A.M. TO 9 P.M. WEDNESDAY and THURSDAY
100% FOAM LOUNGER \$55

MR. AUTO WASH
New England's Most Modern Automatic Car Wash
Motor Cleaning
Interior Shampoo
Foreign Cars Washed Expertly

88 "OPEN HOUSE" 88 SPECIALS
YES, WE'RE HAVING ANOTHER REPEAT OF THE ORIGINAL
88 Jamboree!
OPEN ALL DAY WASHINGTON'S BIRTHDAY and THURSDAY, FRIDAY, SATURDAY

CAMPERS
GEORGE SAYS — "PREPARE NOW!"
FAMILY SIZE 9 FOOT x 9 FOOT UMBRELLA TENT
REG. \$52.50 \$34.88

MANCHESTER SURPLUS SALES CO.
169 N. MAIN ST., AT DEPOT SQUARE—MI 3-7111
MEMBER OF BANK CHARGE PLAN

BOURNE BUICK INC.
THE FOLLOWING ARE WASHINGTON'S BIRTHDAY USED CAR SPECIALS
1954 Buick Wildcat \$395
1954 Buick Wildcat \$395

344 BROAD ST.
Between West Middle Turnpike and Center St.
WASH RATES
\$2.00 per wash
\$2.00 for 2 washes (save \$2)
\$2.00 for 3 washes (save \$2)

DOUBLE TRIPLE-S BLUE STAMPS
EVERY WEDNESDAY
410 MIDDLE TPK. W. MANCHESTER
Open Monday, Tuesday, 10 A.M. to 6 P.M.
Friday, 10 A.M. to 6 P.M.
Saturday, 10 A.M. to 6 P.M.

2

2

1

CLASSIFIED ADVERTISING

CLASSIFIED ADVERTISING DEPT. HOURS 8:15 A.M. to 4:30 P.M. COPY CLIPPING TIME FOR CLASSIFIED ADVT. MONDAY THROUGH SATURDAY 9 A.M. TO 5 P.M.

PLEASE READ YOUR AD

Classified ads are taken over the phone on a non-refundable basis. The advertiser is responsible for the accuracy of the information and for any omissions or errors.

YOUR COOPERATION WILL BE APPRECIATED

Dial MI 3-2711

Lost and Found 1 FOUND—One of money victim's... Automobiles for Sale 4 OLDER CAR mechanic... NEED A CAR and had your credit turned down?

Income Tax Prepared, MI 9-055. Income Tax Returns prepared in your home or by appointment. Auto Driving School 7-8-37. LARSON'S Connecticut's first... Sewing Machines 3 VACUUM CLEANERS repaired in my own home shop.

Automobiles for Sale 4 CALL OR SEE ME for a good deal on 1951 Dodge Dart, Lincoln and Buick Wildcat... Business Services Offered 13 CHAM SAW works... COMA APPLIANCE SERVICE... MILLINERY DRESSMAKING 19

Painting—Papering 21 INTERIOR PAINTING, decorating, wallpapering... EXTERIOR and interior painting... Moving—Trucking 20 AUSTIN A. CHAMBERS Co. Local moving, packing, storage...

Help Wanted—Male 36 HARDING CHECKING machine operator... ESTIMATOR WETHERSFIELD JA 9-2507. Help Wanted—Male or Female 37 EXPERIENCED laundry presser... Situations Wanted—28 SPENGLER, clerk, typist...

WHY WAIVE OVER OUT WITH PRACTICE... BUT TAKE HER IN HER OWN HOME...



Illustration of a woman and a man in a domestic setting, possibly a kitchen or dining area.

Business Services Offered 13 COMPLETE REPAIRS—By Stuart R. Wolcott on automatic... Household Services Offered 13-A DICK'S WEATHERSTRIPE... TY SERVICE—Fotometer's all makes... HAROLD S. SONN, British removers...

Building-Contracting 14 A. A. DION, Inc. Roofing, slating, painting, carpentry... BOWELL HOME IMPROVEMENT... OLDMONIEBERRY, 5-02... MERCURY, 3-00... PONTIAC, 2-door, 6 cylinder...

Roofing—Siding 16 RAY'S ROOFING CO. shingles and built up roofs... MUST BELLY—184 N. Main Street... 1949 MERCURY 3-door, good condition...

Auto Driving School 7-8-37 LARSON'S Connecticut's first... 1951 PONTIAC, 2-door, 6 cylinder... 1949 MERCURY 3-door, good condition...

Roofing and Chimneys 16-1 HOOPING—Specializing in repairing... PLUMBING AND HEATING—re-roofing... RADIOTELEVISIONS... RADIO-TV REPAIR... RADIOTELEVISIONS...

Garage—Storage 10 1600 SQ. FT. WALK-IN basement... Business Services Offered 13 CHAM SAW works... COMA APPLIANCE SERVICE... MILLINERY DRESSMAKING 19

Automobiles for Sale 4 CALL OR SEE ME for a good deal on 1951 Dodge Dart, Lincoln and Buick Wildcat... Business Services Offered 13 CHAM SAW works... COMA APPLIANCE SERVICE... MILLINERY DRESSMAKING 19

Business Services Offered 13 CHAM SAW works... COMA APPLIANCE SERVICE... MILLINERY DRESSMAKING 19

Painting—Papering 21 INTERIOR PAINTING, decorating, wallpapering... EXTERIOR and interior painting... Moving—Trucking 20 AUSTIN A. CHAMBERS Co. Local moving, packing, storage...

Help Wanted—Male 36 HARDING CHECKING machine operator... ESTIMATOR WETHERSFIELD JA 9-2507. Help Wanted—Male or Female 37 EXPERIENCED laundry presser... Situations Wanted—28 SPENGLER, clerk, typist...

Help Wanted—Male 36 HARDING CHECKING machine operator... ESTIMATOR WETHERSFIELD JA 9-2507. Help Wanted—Male or Female 37 EXPERIENCED laundry presser... Situations Wanted—28 SPENGLER, clerk, typist...

Help Wanted—Male 36 HARDING CHECKING machine operator... ESTIMATOR WETHERSFIELD JA 9-2507. Help Wanted—Male or Female 37 EXPERIENCED laundry presser... Situations Wanted—28 SPENGLER, clerk, typist...

Help Wanted—Male 36 HARDING CHECKING machine operator... ESTIMATOR WETHERSFIELD JA 9-2507. Help Wanted—Male or Female 37 EXPERIENCED laundry presser... Situations Wanted—28 SPENGLER, clerk, typist...

Help Wanted—Male 36 HARDING CHECKING machine operator... ESTIMATOR WETHERSFIELD JA 9-2507. Help Wanted—Male or Female 37 EXPERIENCED laundry presser... Situations Wanted—28 SPENGLER, clerk, typist...

Household Goods 51

SEE OUR great selection of metal... NORMAN'S BUYS OUT... COMPLETE 3 ROOM OUTFITS... THE HOLLYWOOD 12 weekly... THREE ROOM heated apartment...

TORE SHOW Round power handle... Musical Instruments 47 YOUR BEST BUY IS AT NATIONAL... FRANKLIN, Truax Road, 88 Per M... YOUR PIANO used electronically...

Wearing Apparel—Furs 57 PERLAN LAMB fur coat... DIAMONDS—WATCHES—JEWELRY 48 LEONARD W. ZOST, Jeweler... GREEN MOUNTAIN Pedals...

Rooms for Rent 65 FOR LEASE—3 room ranch... BEAUTIFUL 6 ROOM RANCH... BUSINESS PROPERTY FOR SALE 70 HAVE SPECIAL parcels of investment property...

Rooms for Rent 65 FOR LEASE—3 room ranch... BEAUTIFUL 6 ROOM RANCH... BUSINESS PROPERTY FOR SALE 70 HAVE SPECIAL parcels of investment property...

Rooms for Rent 65 FOR LEASE—3 room ranch... BEAUTIFUL 6 ROOM RANCH... BUSINESS PROPERTY FOR SALE 70 HAVE SPECIAL parcels of investment property...

Rooms for Rent 65 FOR LEASE—3 room ranch... BEAUTIFUL 6 ROOM RANCH... BUSINESS PROPERTY FOR SALE 70 HAVE SPECIAL parcels of investment property...

Rooms for Rent 65 FOR LEASE—3 room ranch... BEAUTIFUL 6 ROOM RANCH... BUSINESS PROPERTY FOR SALE 70 HAVE SPECIAL parcels of investment property...

Rooms for Rent 65 FOR LEASE—3 room ranch... BEAUTIFUL 6 ROOM RANCH... BUSINESS PROPERTY FOR SALE 70 HAVE SPECIAL parcels of investment property...

Rooms for Rent 65 FOR LEASE—3 room ranch... BEAUTIFUL 6 ROOM RANCH... BUSINESS PROPERTY FOR SALE 70 HAVE SPECIAL parcels of investment property...

Rooms for Rent 65 FOR LEASE—3 room ranch... BEAUTIFUL 6 ROOM RANCH... BUSINESS PROPERTY FOR SALE 70 HAVE SPECIAL parcels of investment property...

Rooms for Rent 65 FOR LEASE—3 room ranch... BEAUTIFUL 6 ROOM RANCH... BUSINESS PROPERTY FOR SALE 70 HAVE SPECIAL parcels of investment property...

Rooms for Rent 65 FOR LEASE—3 room ranch... BEAUTIFUL 6 ROOM RANCH... BUSINESS PROPERTY FOR SALE 70 HAVE SPECIAL parcels of investment property...

Rooms for Rent 65 FOR LEASE—3 room ranch... BEAUTIFUL 6 ROOM RANCH... BUSINESS PROPERTY FOR SALE 70 HAVE SPECIAL parcels of investment property...

Rooms for Rent 65 FOR LEASE—3 room ranch... BEAUTIFUL 6 ROOM RANCH... BUSINESS PROPERTY FOR SALE 70 HAVE SPECIAL parcels of investment property...

State News Roundup

Parley on NHRR Hartford, Feb. 21 (AP)—Gov. John Dempsey and legislative leaders... State Supreme Court Under the 1967 law, committees have filed for grants...

First Follo of '61 Hartford, Feb. 21 (AP)—The State Health Department has reported Connecticut's first polio case... Budget Attacked Hartford, Feb. 21 (AP)—Gov. John Dempsey has announced that a special division will be created...

State Jobs Study Hartford, Feb. 21 (AP)—Gov. John Dempsey has announced that a special division will be created... Sheriff Not Exempt Hartford, Feb. 21 (AP)—State and local police are opposed to any legislation to exempt deputy sheriffs...

State Jobs Study Hartford, Feb. 21 (AP)—Gov. John Dempsey has announced that a special division will be created... Sheriff Not Exempt Hartford, Feb. 21 (AP)—State and local police are opposed to any legislation to exempt deputy sheriffs...

State Jobs Study Hartford, Feb. 21 (AP)—Gov. John Dempsey has announced that a special division will be created... Sheriff Not Exempt Hartford, Feb. 21 (AP)—State and local police are opposed to any legislation to exempt deputy sheriffs...

State Jobs Study Hartford, Feb. 21 (AP)—Gov. John Dempsey has announced that a special division will be created... Sheriff Not Exempt Hartford, Feb. 21 (AP)—State and local police are opposed to any legislation to exempt deputy sheriffs...

State Jobs Study Hartford, Feb. 21 (AP)—Gov. John Dempsey has announced that a special division will be created... Sheriff Not Exempt Hartford, Feb. 21 (AP)—State and local police are opposed to any legislation to exempt deputy sheriffs...

State Jobs Study Hartford, Feb. 21 (AP)—Gov. John Dempsey has announced that a special division will be created... Sheriff Not Exempt Hartford, Feb. 21 (AP)—State and local police are opposed to any legislation to exempt deputy sheriffs...

State Jobs Study Hartford, Feb. 21 (AP)—Gov. John Dempsey has announced that a special division will be created... Sheriff Not Exempt Hartford, Feb. 21 (AP)—State and local police are opposed to any legislation to exempt deputy sheriffs...

State Jobs Study Hartford, Feb. 21 (AP)—Gov. John Dempsey has announced that a special division will be created... Sheriff Not Exempt Hartford, Feb. 21 (AP)—State and local police are opposed to any legislation to exempt deputy sheriffs...

State Jobs Study Hartford, Feb. 21 (AP)—Gov. John Dempsey has announced that a special division will be created... Sheriff Not Exempt Hartford, Feb. 21 (AP)—State and local police are opposed to any legislation to exempt deputy sheriffs...

State Jobs Study Hartford, Feb. 21 (AP)—Gov. John Dempsey has announced that a special division will be created... Sheriff Not Exempt Hartford, Feb. 21 (AP)—State and local police are opposed to any legislation to exempt deputy sheriffs...

State Jobs Study Hartford, Feb. 21 (AP)—Gov. John Dempsey has announced that a special division will be created... Sheriff Not Exempt Hartford, Feb. 21 (AP)—State and local police are opposed to any legislation to exempt deputy sheriffs...

State Jobs Study Hartford, Feb. 21 (AP)—Gov. John Dempsey has announced that a special division will be created... Sheriff Not Exempt Hartford, Feb. 21 (AP)—State and local police are opposed to any legislation to exempt deputy sheriffs...

State Jobs Study Hartford, Feb. 21 (AP)—Gov. John Dempsey has announced that a special division will be created... Sheriff Not Exempt Hartford, Feb. 21 (AP)—State and local police are opposed to any legislation to exempt deputy sheriffs...

State News Roundup

Parley on NHRR Hartford, Feb. 21 (AP)—Gov. John Dempsey and legislative leaders... State Supreme Court Under the 1967 law, committees have filed for grants...

First Follo of '61 Hartford, Feb. 21 (AP)—The State Health Department has reported Connecticut's first polio case... Budget Attacked Hartford, Feb. 21 (AP)—Gov. John Dempsey has announced that a special division will be created...

State Jobs Study Hartford, Feb. 21 (AP)—Gov. John Dempsey has announced that a special division will be created... Sheriff Not Exempt Hartford, Feb. 21 (AP)—State and local police are opposed to any legislation to exempt deputy sheriffs...

State Jobs Study Hartford, Feb. 21 (AP)—Gov. John Dempsey has announced that a special division will be created... Sheriff Not Exempt Hartford, Feb. 21 (AP)—State and local police are opposed to any legislation to exempt deputy sheriffs...

State Jobs Study Hartford, Feb. 21 (AP)—Gov. John Dempsey has announced that a special division will be created... Sheriff Not Exempt Hartford, Feb. 21 (AP)—State and local police are opposed to any legislation to exempt deputy sheriffs...

State Jobs Study Hartford, Feb. 21 (AP)—Gov. John Dempsey has announced that a special division will be created... Sheriff Not Exempt Hartford, Feb. 21 (AP)—State and local police are opposed to any legislation to exempt deputy sheriffs...

State Jobs Study Hartford, Feb. 21 (AP)—Gov. John Dempsey has announced that a special division will be created... Sheriff Not Exempt Hartford, Feb. 21 (AP)—State and local police are opposed to any legislation to exempt deputy sheriffs...

State Jobs Study Hartford, Feb. 21 (AP)—Gov. John Dempsey has announced that a special division will be created... Sheriff Not Exempt Hartford, Feb. 21 (AP)—State and local police are opposed to any legislation to exempt deputy sheriffs...

State Jobs Study Hartford, Feb. 21 (AP)—Gov. John Dempsey has announced that a special division will be created... Sheriff Not Exempt Hartford, Feb. 21 (AP)—State and local police are opposed to any legislation to exempt deputy sheriffs...

State Jobs Study Hartford, Feb. 21 (AP)—Gov. John Dempsey has announced that a special division will be created... Sheriff Not Exempt Hartford, Feb. 21 (AP)—State and local police are opposed to any legislation to exempt deputy sheriffs...

State Jobs Study Hartford, Feb. 21 (AP)—Gov. John Dempsey has announced that a special division will be created... Sheriff Not Exempt Hartford, Feb. 21 (AP)—State and local police are opposed to any legislation to exempt deputy sheriffs...

State Jobs Study Hartford, Feb. 21 (AP)—Gov. John Dempsey has announced that a special division will be created... Sheriff Not Exempt Hartford, Feb. 21 (AP)—State and local police are opposed to any legislation to exempt deputy sheriffs...

State Jobs Study Hartford, Feb. 21 (AP)—Gov. John Dempsey has announced that a special division will be created... Sheriff Not Exempt Hartford, Feb. 21 (AP)—State and local police are opposed to any legislation to exempt deputy sheriffs...

State Jobs Study Hartford, Feb. 21 (AP)—Gov. John Dempsey has announced that a special division will be created... Sheriff Not Exempt Hartford, Feb. 21 (AP)—State and local police are opposed to any legislation to exempt deputy sheriffs...

State Jobs Study Hartford, Feb. 21 (AP)—Gov. John Dempsey has announced that a special division will be created... Sheriff Not Exempt Hartford, Feb. 21 (AP)—State and local police are opposed to any legislation to exempt deputy sheriffs...

Rockville-Urban Renewal

Show to Serve Bathing Tubs Youth Arrested On Liquor Court

Bus Strike Near New Britain, Feb. 21 (AP)—A Connecticut Railway & Lighting Co. train was derailed... Sheriff Not Exempt Hartford, Feb. 21 (AP)—State and local police are opposed to any legislation to exempt deputy sheriffs...

State Jobs Study Hartford, Feb. 21 (AP)—Gov. John Dempsey has announced that a special division will be created... Sheriff Not Exempt Hartford, Feb. 21 (AP)—State and local police are opposed to any legislation to exempt deputy sheriffs...

State Jobs Study Hartford, Feb. 21 (AP)—Gov. John Dempsey has announced that a special division will be created... Sheriff Not Exempt Hartford, Feb. 21 (AP)—State and local police are opposed to any legislation to exempt deputy sheriffs...

State Jobs Study Hartford, Feb. 21 (AP)—Gov. John Dempsey has announced that a special division will be created... Sheriff Not Exempt Hartford, Feb. 21 (AP)—State and local police are opposed to any legislation to exempt deputy sheriffs...

State Jobs Study Hartford, Feb. 21 (AP)—Gov. John Dempsey has announced that a special division will be created... Sheriff Not Exempt Hartford, Feb. 21 (AP)—State and local police are opposed to any legislation to exempt deputy sheriffs...

State Jobs Study Hartford, Feb. 21 (AP)—Gov. John Dempsey has announced that a special division will be created... Sheriff Not Exempt Hartford, Feb. 21 (AP)—State and local police are opposed to any legislation to exempt deputy sheriffs...

State Jobs Study Hartford, Feb. 21 (AP)—Gov. John Dempsey has announced that a special division will be created... Sheriff Not Exempt Hartford, Feb. 21 (AP)—State and local police are opposed to any legislation to exempt deputy sheriffs...

State Jobs Study Hartford, Feb. 21 (AP)—Gov. John Dempsey has announced that a special division will be created... Sheriff Not Exempt Hartford, Feb. 21 (AP)—State and local police are opposed to any legislation to exempt deputy sheriffs...

State Jobs Study Hartford, Feb. 21 (AP)—Gov. John Dempsey has announced that a special division will be created... Sheriff Not Exempt Hartford, Feb. 21 (AP)—State and local police are opposed to any legislation to exempt deputy sheriffs...

State Jobs Study Hartford, Feb. 21 (AP)—Gov. John Dempsey has announced that a special division will be created... Sheriff Not Exempt Hartford, Feb. 21 (AP)—State and local police are opposed to any legislation to exempt deputy sheriffs...

State Jobs Study Hartford, Feb. 21 (AP)—Gov. John Dempsey has announced that a special division will be created... Sheriff Not Exempt Hartford, Feb. 21 (AP)—State and local police are opposed to any legislation to exempt deputy sheriffs...

State Jobs Study Hartford, Feb. 21 (AP)—Gov. John Dempsey has announced that a special division will be created... Sheriff Not Exempt Hartford, Feb. 21 (AP)—State and local police are opposed to any legislation to exempt deputy sheriffs...

State Jobs Study Hartford, Feb. 21 (AP)—Gov. John Dempsey has announced that a special division will be created... Sheriff Not Exempt Hartford, Feb. 21 (AP)—State and local police are opposed to any legislation to exempt deputy sheriffs...

State Jobs Study Hartford, Feb. 21 (AP)—Gov. John Dempsey has announced that a special division will be created... Sheriff Not Exempt Hartford, Feb. 21 (AP)—State and local police are opposed to any legislation to exempt deputy sheriffs...



YOUR BEST DEAL IS ALWAYS AT MORIARTY BROTHERS

Don't Miss This SPECIAL BONUS OFFER Starts February 22 GOOD THROUGH SATURDAY, FEB. 25 It's The Greatest!!

60 MERCURY MONCLAIR 2-DR. HARDTOP \$2495. 58 Cadillac DeVille \$2845. 57 Ford Fairlane \$895. 55 Mercury Station Wagon \$645. 54 Mercury Station Wagon \$495. 57 Dodge Station Wagon \$1075.

MORIARTY BROTHERS Lincoln - Continental - Mercury - Comet - English Ford 301-315 CENTER ST., MANCHESTER - MI 3-5135

GOOD YEAR

Washington's Birthday SALE

• OPEN WEDNESDAY and THURSDAY TILL 9 •

GET THIS BEAUTIFUL GE TABLE RADIO FOR ONLY \$1.00



WITH THE PURCHASE OF 69.95 OR OVER

Special Prices

ON EVERY ITEM IN THE STORE

Depending On Purchase **Take 6 Mos. to 3 Years To Pay**



Not 8 Pounds—Not 10 Pounds
But **12 Pounds** Of Dirty Clothes

1961 G-E Filter-Flo Washer

REG. 229.95

\$189

PLUS GE RADIO For 1.00

2.75 Weekly Or 12.00 Monthly

ON OUR OWN BUDGET PLAN

30-60-90-DAYS SAME AS CASH

Big 13 Cubic Ft. 1961 G-E Refrigerator-Freezer With Automatic Defrost

- Big 13 cu. ft. Freezer
- Slide-out shelves
- Adjustable door shelves
- No coils on back.
- Fits flush against wall

REG. 369.95

\$288



NO MONEY DOWN WITH YOUR OLD REFRIGERATOR

PLUS GE RADIO FOR 1.00

3.50 Weekly Or 14.50 Monthly On Our Own Budget Plan



1961 G-E PORTABLE TV With UHF-VHF

\$168

PLUS GE RADIO FOR 1.00

NO MONEY DOWN WITH YOUR OLD TV

2.50 Weekly Or 11.00 Monthly

FREE Delivery Anywhere **FREE** 1 Year Factory Service On All Parts and Labor

Check These Washington Day Specials

12 CUBIC FT. G-E REFRIGERATOR	Was 239.95	198.00
11 CUBIC FT. G-E FREEZER	Was 259.95	198.00
13 CUBIC FT. G-E FREEZER	Was 339.95	249.00
30-INCH G-E RANGE WITH TIMER	Was 219.95	177.00
40-INCH G-E RANGE DOUBLE OVEN WITH TIMER	Was 349.95	259.00
19-INCH G-E PORTABLE TV, UHF-VHF	Was 239.95	177.00
21-INCH G-E PORTABLE TV, UHF-VHF	Was 269.95	219.00
21-INCH G-E CONSOLE TV, UHF-VHF	Was 289.95	229.00
23-INCH GE CONSOLE TV, UHF-VHF	Was 319.95	249.00
G-E CONSOLE STEREO'S WITH 4 SPEAKERS	Was 239.95	199.00
G-E MOBIL-MAID PORTABLE DISHWASHER	Was 229.95	187.00
G-E ELECTRIC DRYER	Was 199.95	148.00

PLUS GE RADIO FOR 1.00 WITH ANY OF ABOVE

OPEN WEDNESDAY and THURSDAY TILL 9 P.M.

GOOD YEAR SERVICE STORE

713 MAIN ST., MANCHESTER—PHONE MI 9-9523

About Town

Manchester Lodge of Elks will hold past exalted rulers' night tomorrow. A Cornish game hen dinner will be served at 8:30 p.m., and a class of candidates for the Elks will be initiated at 8 o'clock.

Calvin Taggart, superintendent of the Eighth District sewer department, Ernest Morse, superintendent of the Manchester Water Co., and Harry Pratt, superintendent of the Town of Manchester sewage disposal plant recently attended a testimonial dinner for Warren J. Scott, a West Hartford resident and a State sanitary engineer and inspector, who was honored upon his retirement after 32 years of service.

The Perennial Planters will meet Monday, Feb. 27, at 8 p.m. at the home of Mrs. York Strangfield, 158 Greenwood Dr. Members will prepare short talks on their favorite annuals. Mrs. Dexter Stark will have available spring catalogues. Mrs. S. A. Eklund will be co-hostess.

Officers and members of the British American Club will meet at the clubhouse tonight at 7:30 to proceed to the Watkins-West Funeral Home, 142 E. Center St., to pay respects to William Hunniford, a club member.

A meeting of Story Circle, WSCS, of South Methodist Church, scheduled for tomorrow morning, has been canceled. Members are reminded of the rummage sale to be held March 1.

Honorary and active members of Hose Co. No. 2 will meet at the firehouse tonight at 7 to proceed to the Watkins-West Funeral Home, 142 E. Center St., to pay respects to William Hunniford, who was an honorary member.

Miss Nora Bresnahan, director of consumer relations for the Hartford Better Business Bureau, will give a talk, "When in Doubt Find Out," at a meeting of the Manchester Jaycee Wives tomorrow at 8:15 p.m. at Center Congregational Church. Hostesses will be Mrs. John Jeffers and Mrs. Richmond W. Morrison.

Announce Engagements



The engagement of Miss Carolyn LeBlanc of Coventry to Edward Bridgeman of Manchester is announced by her parents, Mr. and Mrs. Leo LeBlanc, South St., South Coventry.

Her fiance is the son of Mr. and Mrs. Robert W. Bridgeman, 73 Oak St., Manchester.

The bride-elect is a 1960 graduate of Windham High School, and is employed by Travelers Insurance Co. in Hartford. Mr. Bridgeman attended Manchester High School and Howell Cheney Technical School. He is employed by Cheney Bros. in Manchester.

The wedding will take place April 15 at St. Mary's Catholic Church in Coventry.

IKE RESTS AT HOME
Palm Springs, Calif., Feb. 21 (AP)—Former President Dwight D. Eisenhower is resting in his rented winter home, hoping to throw off a cold and a touch of lumbago so he can resume his daily golf.

Mr. Eisenhower had recovered sufficiently Sunday night to accompany his wife and several friends to dinner at a restaurant in this desert spa. His secretary said it was the first time since leaving office that the ex-President has visited a public restaurant.



The engagement of Miss Mary Elizabeth Prior of Manchester, to Joseph James Negri of New Britain is announced by her parents, Mr. and Mrs. John T. Prior Sr., 106 Main St., Manchester.

Her fiance is the son of Mr. and Mrs. Joseph L. Negri, New Britain.

Miss Prior is a graduate of St. Paul's High School, Scranton, Pa., and she attended Marywood College, Scranton, Pa. She is employed by the Southern New England Telephone Co.

Mr. Negri is a graduate of Admiral Bullard Academy, New London, and the University of Connecticut, class of 1961. He is a design engineer at Pratt and Whitney Aircraft, East Hartford.

A Sept. 9 wedding is planned. Fallot Studio



The engagement of Miss Margaret Norine Foley of Manchester to John Douglas Barberie Jr. of Windsor Locks is announced by her parents, Mr. and Mrs. Cornelius R. Foley, 49 Scarborough Rd.

Her fiance is the son of Mr. and Mrs. J. Douglas Barberie of Windsor Locks.

Miss Foley is a graduate of Mount Saint Joseph Academy and St. Francis Hospital School of Nursing. She is employed on the staff at St. Francis Hospital, Hartford.

Mr. Barberie is a graduate of Cathedral High School in Springfield, Mass., and Holyoke Junior College, Holyoke, Mass. He is employed by Concrete Service, Inc. in Windsor Locks.

An April wedding is planned. Burian-Moss Photo

WASHINGTON'S BIRTHDAY

SPECIAL

Wednesday 'n' Thursday Only!

MEN'S, WOMEN'S and CHILDREN'S LEATHER or COMPOSITION INVISIBLE

HALF SOLES \$1.67

• WE GIVE 20¢ GREEN STAMPS •
— Look For Our Weekly Special Every Tuesday —

HOUSE & HALE

USE OUR OAK STREET ENTRANCE—MI 8-4123
SHOE REPAIR SERVICE

WASHINGTON'S BIRTHDAY

SALE!

WHAT T-E-R-R-I-F-I-C VALUES!
FINAL CLEARANCE OF ALL

Winter Hats

\$1. - \$2. - \$3

Values to \$12.98!

• WE GIVE 20¢ GREEN STAMPS •

HOUSE & HALE

MILLINERY DEPARTMENT now located on the main floor

Advertise in The Herald—It Pays

PRICES

GET THE HATCHET!

DURING OUR

Washington Birthday 12 Hour Sale

Starting Tomorrow, Feb. 22 At 9 A.M. — 9 P.M.

Bargain Shoppers! Treasure Hunters! This Is Your Day!

WHY PAY MORE WHEN YOU SAVE SO MUCH AT OUR BIG FACTORY SHOWROOMS

Come In... Look Around We Know You Will Be Delighted!

Bezzini Bros. FURNITURE CO.

358 EAST CENTER ST., MANCHESTER, CONN.
MI 9-1864—FREE AMPLE PARKING

X

MARKS THE SPOT of Washington's greatest BATTLE of the BARGAINS!

• • •

HOUSE & HALE

(open tomorrow 9:00 to 9:00)

SEE PAGES 27 and 28 IN THE TABLOID SECTION

To enter Kathy's new contest please send your name and telephone number to Kathy Godfrey, WINF, Manchester.



*Cut Yourself
a Slice of...*

WEDNESDAY, FEB. 22, 9 a.m. to 9 p.m.

IN MANCHESTER STORES

MAIN and OTHER STREETS and THE PARKADE

(Members of the Retail Division of the Manchester Chamber of Commerce)

**PRICES CHOPPED TO PROVIDE
SPECTACULAR BARGAINS!!**

In Case of Inclement Weather Sale Will Be Carried Over Thursday, Feb. 23

Sponsored By The Retail Division Of The Manchester Chamber Of Commerce

HERE ARE MORE SENSATIONAL VALUES AT...

Keith Furniture

1115 MAIN ST. MANCHESTER

LOOK!... Here is The

Biggest Bargain In Town!

9 PIECE, IMPORTED CHINA HOSPITALITY SET

Truly Magnificent!... Imagine getting this luxurious set at such a low, low price! You'll treasure every piece... and how your friends will envy you!

SAVE 1/2 \$2.98 COMPLETELY NEW LOVELY PIECES



The Pride and Joy Of Any Hostess
Gorgeous Moss Rose Decorations With Lavish 22 Kl. Gold Trim
Many Other Money-Saving Bargains Throughout the Store

COMPLETE 8-Pc. OUTFIT 2 BOOKCASE TWIN BEDS

JUST LOOK WHAT YOU GET:

- Bunk Bed with Roomy Bookcase Headboards
- 2 Resilient Springs
- 2 Famous Mattresses
- Ladder and Guard Rail
- Easily converts to twin beds

\$86

ONE DAY ONLY



Gold Bond 2 for 1 LOW PRICE SALE

FAMOUS MATTRESSES and BOX SPRINGS



SMART SET MATTRESS and BOX SPRING. Pre-built borders and woven ticking. Twin size only. Great value. 2 For \$49.95

POSTURE MATTRESS and BOX SPRING. Famous Miracle Posture construction. 220 coils for superb back comfort. Has prebuilt borders. Full or twin size. 2 For \$69.95

Cash and Carry—Subject to Prior Sale! 5 ONLY BLOND LIVING ROOM TABLES Choice of Cocktail or Step. Values to \$29.95. WED. ONLY \$5

Prices get the Axe

ALL CARS REDUCED IN PRICE

Priced Now From 8c to \$3388

COME IN AND LOOK 'EM OVER!

A RECORD BREAKING YEARLY EVENT! TREMENDOUS SPECIALS EVERY HOUR!

Don't Miss It!

Due to early printing date of this tabloid—list of specials will appear in the Tuesday, February 21 edition of Manchester Evening Herald. Come early—whether you see the list or not! You won't be disappointed!

TOP TRADES ON THE NEW '61 OLDSMOBILES

MANCHESTER OLDSMOBILE MOTOR SALES

"Selling and Servicing Oldsmobiles for over 25 Years"

RAY DWYER—Used Car Manager

512 WEST CENTER ST., MANCHESTER

OPEN EVENINGS

MR 3-2411

WASHINGTON'S BIRTHDAY USED CAR SALE!

FEB. 22 through FEB. 25



KEITH'S 12 HOUR SALE FROM 9 A.M. to 9 P.M.

ALL SALES FINAL! FIRST COME, FIRST SERVED! SAMPLES! LIMITED QUANTITIES!

HAND DECORATED TOLE LAMPS

THREE STYLES

TABLE \$6.66
FLOOR \$8.99
BRIDGE \$11.99

Polished Brass Trim Metal Shades

- One Day Only MOST ITEMS LESS THAN 50% OF ORIGINAL SELLING PRICE ALL AS IT —ALL SALES FINAL
- WAS NOW
- 26.95 Maple Poster Bed, Full size. 9.98
 - 53.90 One Pair Only, Maple Beds, Both For 19.95
 - 79.95 Maple Love Seat, Foam seats and backs. 49.95
 - 49.95 Maple Wing Chair, Foam seats and backs. 34.88
 - 298 3 Piece Sectional Sofa, Foam Cushions. 144.50
 - 319 3 Piece Kneeler Suite, Blue and gold. 144.50
 - 39.95 Walnut Modern Panel Bed, Twin size. 9.98
 - 39.95 Large Modern Blond Night Table. 19.95
 - 64.95 Solid Maple Corner Desk. 24.88
 - 109.95 Solid Cherry Chest on Chest. 66.00
 - 24.95 Walnut Typewriter Table. 9.98
 - 31.95 Junior Crib and Play Yard with Pad. 24.88
 - 21.95 Metal Wall Cabinet. 17.88
 - 79.95 Maple Desk and Chair, Formica top. 58.88
 - 24.95 3 Position Table, For dining, for cards, for cocktails, Folds to store. 9.98
 - 14.95 2 Sheets, 2 Pillow Cases, Bedsprad. (Cotton) 4.95
 - 24.95 Cherry Dining Chair. 17.50
 - 179.95 Cherry Corner Cabinet. 139.95
 - 189.95 5 Piece Beige Mahogany Dining Group, Round table. 149.95
 - 44.50 Solid Cherry Night Table. 34.95
 - 79.95 Mahogany Dresser and Mirror. 59.95
 - 199.50 3 Piece Plastic Top gray mahogany Bedroom. Triple Dresser, Bookcase Bed, Chest, Today only. 119.00
 - 69.95 Danish Walnut lounge Chair. 44.50
 - 89.95 Man's Lounge Chair, Nylon and foam. 66.00

FEATHERWEIGHT ALUMINUM FOLDING BED WITH 100% FOAM MATTRESS

WAS \$39.95

ONE DAY ONLY \$24.88

LIGHTWEIGHT. Can be picked up easily with one hand. PERFECT FOR GUESTS. Full 6-foot length, full 28" wide. Comfortable! EASY TO STORE. Folds smaller than 8", to store under bed or in closet. TAKE IT ANYWHERE. Put it in a car trunk... take to the beach, anywhere!

NATIONALLY KNOWN MERSMAN TABLES — 4 STYLES

MAHOGANY WITH FORMICA TOPS

ALL THE SAME PRICE ONE DAY ONLY

2 FOR \$39.95
1 FOR \$21.99

COCKTAIL TABLE

COCKTAIL TABLE

COCKTAIL TABLE

STEP TABLE

WOOLS! NYLONS! RAYONS! TWEEDS SOLIDS TEXTURES ALL PERFECT

Greatest rug values we've ever had!

EXTRA LARGE ROOM-SIZE RUGS COMPLETE with FOAM RUBBER PADDING!

CHOOSE ANY SIZE LISTED—From 12'x9' to 15'x12'

\$69 FOR ANY RUG

\$5.00 DOWN \$5.00 PER MONTH

9x12 Nylon loop in tweed \$69

9x12 70% wool, 30% nylon \$69

12x12 70% wool, 30% nylon \$69

9x12 Nylon tweed loop rug \$69

9x12 Nylon solid color loop \$69

9x15 Nylon solid color loop \$69

9x15 Rayon loop rug in tweed pebble sponge back \$69

9x15 Nylon tweed loop \$69

9x15 Rayon tweed loop rug \$69

12x12 Rayon tweed loop rug \$69

9x12 70% wool, 30% nylon loop rug in solid color \$69

9x15 Rayon tweed loop rug, pebble sponge back \$69

9x12 Rayon tweed cut pile \$69

9x12 All wool tweed or solid loop rug \$69

MANY OTHERS NOT LISTED

\$30 WORTH OF STEREO RECORDS INCLUDED WITH THE PURCHASE OF THIS FULL-TONE 4-SPEAKER STEREO CONSOLE

\$129.95

DELIVERED! INSTALLED! SERVICED!

Automatic four-speed stereo changer. Dual channel amplifiers, sap-phire turnover cartridge, two coaxial speakers, extension jack! Beautifully finished mahogany console cabinet!

KING SIZE RECLINER FOAM TOPPER IN SEAT

\$58

Nylon-viscose and supported back plastic. Reg. price \$79.95. One Day Only

SOLID FOAM DECORATOR PILLOWS

Dress up all your rooms during this sale! Pillows have cutduroy or bark-cloth covers that zip-off; wash beautifully. Plump, foam pillows stay resilient always. Choice of 12" square or round in decorator colors.

88c USUALLY \$2.99 Each

Keith Furniture 1115 MAIN ST. MANCHESTER

SHERWIN-WILLIAMS
Washington's Birthday
 SPECIALS—WED., FEBRUARY 22

ALUMINUM EXTENSION LADDERS 1 BEAM SIDE RAILS	WOODEN STEP LADDERS
2 ONLY, 20' REG. 41.50 23.80	4 ONLY, 6' 2.57
6 ONLY, 24' REG. 49.50 28.50	28 ONLY, 8' 2.97
8 ONLY, 28' REG. 59.00 33.32	10 ONLY, 6' 3.67

OAK PICTURE FRAMES
 REG. \$1.50 to \$2.00—ASSORTED SIZES

5" x 7" to 12" x 16" 99c	14" x 18" to 18" x 25" 1.49
---------------------------------------	--

1 1/2" x 5" WIDTH—OVER 250 FRAMES TO CHOOSE FROM

ALL PAINT BY NUMBER SETS	ODDS and ENDS TABLE	ALL TOLE CRAFT SETS 1/2 PRICE
1/2 OFF	17c-47c-97c	Over 375 pieces in stock. Reg. \$1.79-\$4.49 NOW 89c to \$2.25

WALLPAPER
 275 PATTERNS TO CHOOSE FROM **57c** SINGLE ROLL
 SOME BUNDLED ROOM LOTS \$2.98

SHERWIN - WILLIAMS
 981 MAIN STREET, MANCHESTER—MI 3-6636

WASHINGTON'S Birthday SPECIALS

SPORT SHIRTS
 One lot. Values to \$5.95. **99c** NOW

BANLON KNITS
 1/2 PRICE
 Reg. \$15.95 NOW \$12.99
 Reg. \$14.95 NOW \$11.99
 Reg. \$13.95 NOW \$10.88

SLACKS
 Reg. \$9.95. NOW 1/2 PRICE

Cotton Flannels
 Reg. \$4.00 NOW \$2.39
 Reg. \$2.95 NOW \$1.88

SPORT COATS
 Values to \$35.00. **\$13.99** NOW

All Other SPORT SHIRTS
 Reg. \$4.95 NOW \$3.19
 Reg. \$3.95 NOW \$2.69
 Reg. \$2.95 NOW \$2.19

TOPCOATS
 Reg. \$65.00 NOW \$37.95
 Reg. \$55.00 NOW \$32.95
 Reg. \$42.75 NOW \$25.86
 Reg. \$38.75 NOW \$22.95

WHITE SHIRTS
 NOT ALL SIZES
 NOW **\$1.88**

SOCKS
 Famous Make
 Reg. \$1.00. NOW **2 For \$1.00**

SWEATERS
 ONE LOT 1/2 PRICE

SUITS
 Reg. \$55.00 NOW \$42.88
 Reg. \$39.95 NOW \$30.88

JACKETS
 REDUCED FROM 30 to 50%

Glenney's MEN'S SHOP
 707 MAIN ST.

BROADLOOM CARPETS *LET'S GO!*
 (PRICES INCLUDE CARPET, CUSHION, LABOR)

NYLON TWEED SQUARE YARD **\$6.66** INSTALLED

WOOL AND RAYON
GREEN and BROWN TWEED \$8.88 Sq. Yd.
Mill second to commercial quality. (Carpet, Cushion, Labor)

SOFT GREEN WOOL TWIST \$8.88 Sq. Yd.
(Carpet, Cushion, Labor)

WOOL GREEN TWEED \$8.88 Sq. Yd.
(Carpet, Cushion, Labor)

BEIGE TWEED \$9.99 Sq. Yd.
(Carpet, Cushion, Labor)
 SEE THEM ALL AT CARPET CENTER

Just Arrived!
 HUNDREDS OF YARDS OF
HEAVY HOTEL QUALITY REMNANTS
 Regular Price Per Yard \$16.50
REMNANT PRICE -- ONLY \$6 a yd.
Pink 2 or 3 and have our workrooms make up a good size rug for you!

VISIT OUR THRIFT DEPARTMENT
 Large rugs at closeout prices.
 Big selection. Bring your room measurements.

BEAUTIFUL COTTONS

12x10-6 \$66	12x16-9 \$99
12x12-6 \$77	12x11-9 \$55
9x13-3 \$44	12x15-8 \$66

Save Now!
9 x 12 RUGS
 35 different colors and styles. Come early for best selection.
PRICED \$39 FROM

BUY A 9x12 RUG and GET A RUG PAD FOR ONLY 99c

CASH and CARRY ITEMS
9 x 12 SUMMER FIBER RUGS
 Only 6 in stock. **\$4.95**
 Reg. \$18.95. Each

HUNDREDS OF
THROW RUGS
 27" x 18" While they last! Each **50c**

RUG REMNANTS
60% OFF
Scatter rugs, hall runners, etc.

Terrific Bargains
 FOR
WASHINGTON'S BIRTHDAY

MANCHESTER CARPET CENTER
 311 MAIN ST.—OPP. STATE ARMORY
 PLENTY OF FREE PARKING
 TELEPHONE MI 3-5103—MI 3-5104
 SPECIAL HOURS STARTING WASHINGTON'S BIRTHDAY
OPEN 9 A.M. to 9 P.M.
WEDNESDAY-THURSDAY-FRIDAY

BIG WASHINGTON'S BIRTHDAY BARGAINS

• HOT COFFEE FOR EVERYBODY 8 to 9 A.M!
 • BARGAINS EVERY HOUR ALL DAY LONG!
 • SPECIAL SAVINGS — PURCHASES — PRICES!
 • OPEN WEDNESDAY and THURSDAY TILL 9!

BY GEORGE — A REAL STEAL
LATEX GIRDLES
 and Pantie Girdles
 Disc. Styles 1st Quality
 REG. to 10.95 **3.92**

OF GEORGE WHAT BARGAINS
 WARM WINTER
WOOL COATS
 VALUES to \$55. **24.22**

NO FIB SAVE \$1 ON EACH BLOUSE
Spring Blouses
 2 For \$3 each **1.59**

Burlon's SMILING SERVICE

2 ALL WOOL CASHMERE COATS **\$4** each Value \$99.

2 MOUTON COATS **\$4** Value \$79.

Girls' Winter Jackets **7.92**
 File lined. Regular \$15.95.

Women's All Wool Slacks **2.22**
 Regularly \$5.99.

Rayon Heavy Rib Umbrellas **.62**
 Regularly \$1.99.

Nylon Seamless Hose 3 for **2.22**
 Regularly \$1.00 pair.

Smart Fall Wool Skirts **3.59**
 Regularly \$6.99—2 for \$7.00

Separates, Skirts, Slacks, Tops **2.22**
 Values to \$7.99.

Fleece Lined Storm Coats **12.22**
 Regularly \$22.99.

100 PAIRS NYLON STOCKINGS **22c** pr. Regularly \$1.

LADIES' RAYON PANTIES **22c** Value 59c

9 GIRLS' POPLIN CAR COATS **\$2** each SIZES 4 to 14

ASSORTED JEWELRY **22c** Value to \$2.

PLEASE BE SURE TO READ OUR AD ON PAGE 5 OF THE HERALD FOR MORE BARGAINS

WHITE ELEPHANT SPECIALS

WEDNESDAY MORNING 9 to 12

Belruss
CORNER CLAMPS

REG. \$1.19
49^c

PAINT SAVER
COLLARS

FOR PAINT CANS

Quart Size Reg. 27c
Gallon Size Reg. 67c
10^c 19^c

1/2 GALLON ONLY
GLAMORENE
COTTON RUG CLEANER

REG. \$2.49
98^c

E. A. JOHNSON PAINT CO.
723 MAIN STREET MANCHESTER



Joseph Vols, of our North Main Street Manchester Office

You'll find that our people are skilled at lightening financial loads!

Each of us from time to time needs an economic lift—a financial boost that will help him meet extraordinary medical bills, finance major repairs, make home improvements, or purchase some badly-needed or much-wanted item. Being able to meet these needs for sizeable sums of money means a great deal to your family, and our people know that.

So don't hesitate to stop in at your nearby Connecticut Bank and Trust Company office any time you have a need for extra cash. Our people there will be happy to arrange a loan that you can handle in convenient monthly payments. Free life insurance is included.

The Connecticut Bank AND TRUST COMPANY

MAIN OFFICE, 893 MAIN ST., MANCHESTER
30 Offices . . . serving 21 Connecticut Communities

MEMBER FEDERAL RESERVE SYSTEM • MEMBER FEDERAL DEPOSIT INSURANCE CORPORATION



SALE

4 BIG DAYS -- STARTING WASHINGTON'S BIRTHDAY, FEB. 22

BOYS' FLANNEL SHIRTS \$1
BOYS' PANTS \$1
1 GROUP OF CORDUROY HATS \$1
MEN'S SOCKS 3 Pairs \$1

1 GROUP OF BOYS' BROOKS SHOES
Regularly \$8.95
\$2.99
Special
Sizes 4 to 6.
Only 30 pairs at this low price.

ONE GROUP OF MEN'S SPORT COATS
Values to \$25.95
\$10
Medium and lightweight.
Light and dark shades.
Longs, shorts, regulars.

MEN'S OUTER JACKETS
\$14.95 to \$29.95 VALUES
1/2 PRICE

MEN'S FAMOUS NAME SHIRTS
White or colored
\$1.99
Values to \$4.50

FLANNEL SHIRTS and SWEATERS
BUY ONE AT REGULAR PRICE—**\$1.00**
GET ANOTHER FOR JUST

SUITS JUST \$1
TOPCOATS \$1
SPORT COATS \$1
SHOES \$1
WHEN YOU BUY ONE AT REGULAR PRICE

EXTRA SPECIAL
GET A PAIR OF PANTS FOR \$1.00
Winterweight Flannels, Gabardines, Sharkskins.
OVER 200 PAIRS IN EVERY SIZE

BUY 2 PANTS FOR \$10
GET ANOTHER PAIR FOR JUST \$1.00
(ALTERATIONS EXTRA)

CHINO PANTS
Buy pair at regular price of \$3.95
GET ANOTHER PAIR FOR JUST \$1.00
Two pairs only \$4.95

GET A TOPCOAT FOR \$1.00
Buy a topcoat at regular price and get another in the same price class for just \$1.00. If you don't want the second coat, bring along a friend and let him get in on the deal!

GET A SUIT FOR \$1.00
Buy a suit at regular price and get another suit in the same price class for just \$1.00. OR: IF YOU PREFER—instead of a second suit you may take a topcoat in the same price class for just \$1.00.

GET A SPORT COAT FOR \$1.00
Regal sport coats are all quality, famous name coats, as are our suits and topcoats. Buy a sport coat at regular price and get another sport coat in the same price class for just \$1.00.

FULLY LINED POPLIN RAINCOATS
\$16.95 VALUE
\$9.99
Regulars, shorts, longs.
Size 34 to 44.

ONE GROUP OF MEN'S SHOES
\$1.99
Values to \$12.95

REGAL
MEN'S SHOP
ADAM HATS
JARMAN SHOES
903-905 MAIN STREET
FORMAL WEAR FOR HIRE
Phone MI 9-1352

OPEN WEDNESDAY and THURSDAY UNTIL 9 P.M.
USE MANCHESTER MAIN STREET—FREE PARKING AREA—PURNELL PARKING

White Elephant Specials

Wednesday, Morning 9 to 12

ASSORTED, COLORED VENETIAN BLIND TAPES **19^c**
Reg. 98c Your Choice

Reflecto-Lite \$1
REFLECTIVE COATING—REG. \$2.25

MASKIT
A Protective Tape To Prevent Paint Overlapping While You Paint.

6"x30 ft., reg. 98c **49^c**
12"x30 ft., reg. \$1.39 **59^c**

6"x150 ft., reg. \$2.39 **98^c**
12"x150 ft., reg. \$2.98 **98^c**

E. A. JOHNSON PAINT CO.
723 MAIN ST. MANCHESTER

Coret Casuals **J. Garman Men's Wear**
887 Main Street Manchester, Conn.

White Elephants

We have loads of White Elephants for you. These are an accumulation of overstocked items and merchandise we must have bought with both eyes closed—Consequently we must get rid of them—Listed below are some of the items and the time of day they will be going on sale.

For Women . . .

ENGLISH WOOL SWEATERS
These are the sweaters we are famous for. However, we just plain bought too many this past year. Cardigans, long sleeve pullovers, short sleeve pullovers. Were 14.98, 12.98, 10.98. Now all one price. **6.98**
ON SALE AT 9 A.M. (Limit—2 per customer)

OUR IMPORTED TWEED SHIRTS
Another case of too many of 1 item. Most of these shirts were 17.98 to 25.00 now priced at **9.98**
ON SALE AT 9 A.M.

OUR DRESSES
We have just a very few left and would like to make room for the new spring and summer stock. All remaining dresses **1/2 Price**

For Men . . .

A FEW WASH 'n WEAR SUITS
Wonderful dacron and cottons, but they are light beige. If you like light beige you've got a bargain. **\$20**
Were 40.00 now **20**
ON SALE 7 P.M.

35 WOOLEN SPORT COATS
Frankly we're tired of looking at them. Would love to see them move out. Originally **\$25** to 69.98 now **25**
ON SALE 7 P.M.

ENTIRE STOCK OF WOOLEN SUITS REDUCED FOR DAY ONLY

GOLF SHIRTS
We just have too many and we have to get rid of them. Originally to 6.50 now **2.50**
ON SALE 9 A.M.

V-NECK SWEATERS
Broken sizes. Mostly 46s and 48s. All imports. Were 12.95 originally. Now **7.95**
ON SALE 9 A.M.

ODD SLACKS
Broken sizes. Pleated and unpleated. Were 24.50 now **13.50**
ON SALE AT 2 P.M.

LINEN JACKETS
Light beige and blue. Just cannot sell them at this point. Were 55.00 now **\$25**
ON SALE AT 2 P.M.

COATS
Lots of size 10s in imported wools. Were to **\$45** To **\$60** now **\$45** To **\$60**
ON SALE AT 7 P.M.

CASHMERE SWEATERS
We would like to get some of these out before ordering for next fall. Were 22.98 and 29.98 now **19.98** And **22.98**
ON SALE AT 7 P.M.

FRENCH PURSES CIGARETTE CASE and LIGHTERS—HALF PRICE
ON SALE ALL DAY

ALL SALES FINAL CASH OR CHECK ONLY
Nominal charge for all alterations.

IN CASE OF REALLY INCLEMENT WEATHER SALE WILL BE CARRIED OVER TO THURSDAY

Washington's Birthday SPECIALS

ONE DAY ONLY—FEB. 22

ALL LP and STEREO RECORDS REDUCED!

All Conn and Selmar BAND INSTRUMENTS REDUCED!

ALL GIBSON GUITARS REDUCED!

ALL PIANOS REDUCED!

ALL RADIOS 1/2 PRICE!

PHONOGRAPH Only 3 Closeout! Left

RAY BELLER'S . . . MUSIC SHOP
1013 MAIN STREET MI 9-2936

BY GEORGE! What Savings!

In Our SHOE DEPT.

"HUSKIE" FLATS and OXFORDS
For growing girls and women. Values to \$8.95—marLOW **\$2.92 - \$3.92**

LADIES' DRESS AND WALKING SHOES
Limited sizes. Values to \$12.95 marLOW **\$2.92**

CHILDREN'S SHOES
Values to \$7.95 marLOW **92^c**

Bargain Table SHOES
"ODDS and ENDS" marLOW **92^c**

INFANTS' REG. \$1.98 FLANNEL SLEEPERS, marLOW 22c

HANDKERCHIEFS . . . marLOW 2c

CHILDREN'S T-SHIRTS . . . marLOW 22c

GIRLS' COTTON PANTIES, Reg. 69c . . . marLOW 22c

WINTER COATS 'n JACKETS SAVINGS UP TO 50%! check these

F.A.S.U.L.O.U.S. HOUSEWARE BUYS!

OVAL BRAIDED 17-29 RUGS marLOW 22c Limited Quantities

1-Pc. ALUMINUM CANISTER SETS marLOW \$1.72 Reg. price \$2.98

IRONING BOARD COVER and PAD SET marLOW 72c Worth \$1.98

GENUINE COPPER BOTTOM REVERSE WARE marLOW 40% OFF LIST

1 LOT OF SILK LAMP SHADES marLOW 42c Values to \$4.95

TOILET SEATS IN ALL COLORS marLOW \$2.92 Value \$4.98

1 LOT OF TABLE LAMP SHADES TOILES and PARCHMENTS marLOW 22c Values to \$3.98

7-Pc. FLINT KITCHEN TOOL SET marLOW \$6.92 Was \$14.95

JUST 1-3 WHEEL BIKE marLOW 22c by Hedstrom Union

WITH A PURCHASE OF \$5.00 IN OUR HOUSEWARES DEPARTMENT

RUBBER FLOOR MATS 21x36 marLOW 42c Limited

RUBBER AUTO RUGS marLOW \$1.72 Reg. \$3.98

1 Only! L. C. SMITH STANDARD TYPEWRITER \$7.95
Good Working Condition

Marlow's Have Gone All Out To CHOP PRICES

for Washington's Birthday

ONE DAY ONLY, WEDNESDAY, FEB. 22—9 to 9!

ENORMOUS SAVINGS!

ON QUALITY FURNITURE

3 ONLY—REG. \$1.95 HAMPDEN CARD TABLES marLOW \$1.22	23 SIZE 71x50 SCATTER RUGS Values to \$8.95 marLOW \$1.22	9x13 SIZE TWEED RUGS marLOW \$29.22
9x13 SIZE BUG CUSHIONS marLOW \$5.22 Check and Carry	9x13 SIZE FIBER RUGS Values to \$28.98 marLOW \$13.22	SIMMONS GREEN TWEED SOFA-BED Was \$89.95 marLOW \$49.22
SEALY 4 POSTER MAPLE TWIN SIZE BED \$1.22 With purchase of Box Spring and Mattress for \$89.95.	3-PIECE MAPLE BEDROOM SUITE Includes: Dresser, Chest and Twin bed. marLOW \$99.22	SIMMONS "BEAUTY-REST" MATTRESSES 1 full size, 1 twin size. (Ticking added). Reg. \$79.99 marLOW \$44.22
3-Speed Portable Piano marLOW \$9.22	E-Z-DO WARDROBE marLOW \$5.22	Living Room Full-Up Chair marLOW \$9.22
1-3 Piece KITCHEN SET Table and 3 Chairs marLOW \$22.22	Webcor 3-Speaker STEREO Reg. \$109.95 marLOW \$132.22	Modern Foam Cushion LOUNGE CHAIR Gold color. Was \$194.95 marLOW \$22.00
1 Only—Full Size CRIB Reg. \$39.95 marLOW \$14.22	1 GROUP OF TABLE LAMPS Values to \$14.95 marLOW \$4.22	Store Demonstrator Hoover VACUUM CLEANER Reg. \$109.99 marLOW \$49.22
INTERNATIONAL 6-Pc. Modern Living Room Includes: Sofa, chair, 2 step tables, 1 pair table lamps. marLOW \$189.22	3-PIECE MAPLE DEN SET Sofa and chair marLOW \$99.22 Come quick for this one!	5-PIECE DEN SET Includes: 2-piece sectional, 1 lounge chair, 1 corner table, 1 step table. Was \$109.95 marLOW \$99.22
WHITE ENAMELWARE Consisting of soapdish, roasting pan, mixing bowl and wash basin. marLOW 22c Each	ZIPPERED LUNCH BAG COMPLETE WITH 1 FIBER VACUUM BOTTLE marLOW \$1.92 Value \$4.18	CHEST of DRAWERS Mahogany finish. marLOW \$29.22
MEN'S WINTER JACKETS Values to \$12.95 marLOW \$2.22	MEN'S RAYON and COTTON SOCKS Reg. 99c. marLOW 22c	MEN'S BROADCLOTH and FLANNEL SHIRTS Reg. \$2.98. marLOW 92c
MEN'S FLANNEL PAJAMAS Reg. \$2.98. marLOW 92c	BOYS' SOCKS Reg. 48c. marLOW 12c	BOYS' TROUSERS Reg. \$2.98. marLOW 92c
LADIES' DUSTERS Reg. \$3.98. marLOW 92c	LADIES' SHIRTS Reg. \$2.98. marLOW 92c	LADIES' KEEF-IN LINING RAINCOATS Reg. \$17.98. marLOW \$8.92
LADIES' LINED DUNGAREES Reg. \$4.98. marLOW 92c	LADIES' UNIFORMS White, green, yellow Reg. \$3.98. marLOW 92c	GIRLS' ANKLE SOCKS marLOW 12c
LADIES' NYLONS marLOW 22c	MANY UNADVERTISED SPECIALS THROUGHOUT STORE	ALL MARLOW PRICED!

PARK FREE

MARLOW'S

OUR 50th YEAR ON MAIN ST., MANCHESTER

SEE US FOR EVERYTHING!

Washington Birthday Sale!

By GADSD, IT'S THE TRUTH—WE HAVE REALLY CHOPPED PRICES!

CRAZY DAY

At 9 a.m. **64 PAIRS, FIRST GRADE—MEN'S, WOMEN'S ELK BOWLING SHOES** \$2.99 Fr. Regularly \$6.50 Fr. While they last only

At 11 a.m. **83 ONLY—IMPORTED HAND WARMERS** 87c Ea. (Reg. \$1.95)

At 1 p.m. **7 ONLY BACKYARD GOLFING CAGES** \$19.88 Use indoors or outdoors. Nationally advertised at \$40. Never again at this low price.

At 3 to 4 p.m. **FOR ONE HOUR ONLY! FOR 1 HOUR ONLY EBONITE TEN PIN BALL** \$19.98 Fitted, engraved with your name. Black Turnado. DELIVERED

At 7 p.m. **WHILE THEY LAST—36 ONLY FULL SIZED—LAMINATED—IMPORTED TENNIS RACQUETS** each 97c

NASSIFF ARMS CO.
"House Of Sports"
1015 MAIN STREET, MANCHESTER—MI 9-1647

Washington's Birthday Sale!

By GADSD, IT'S THE TRUTH—WE HAVE REALLY CHOPPED PRICES!

CRAZY DAY

At 9 a.m. **POLAROID PRINT COPIERS** \$7.99 ONLY 1 No. 240—1 No. 230 Regularly \$29.95

At 11 a.m. **1 FOLDEX 20 CAMERA** \$4.99 Only Regularly \$20.95 Also—other cameras greatly reduced.

At 3 p.m. **TO POLAROID TIMERS** \$1.49 ONLY NO. 150 Regularly \$5.95

SIX ONLY—REGULARLY \$8.50 FR FOLDING FLASH Each \$1.57

At 7 p.m. **100 ROLLS—FRESH DATED Anso Black and White Film** Two For The Price Of One!

HERM'S CAMERA and PHOTO
(IN NASSIFF ARMS STORE)
1015 MAIN STREET—CORNER MAPLE STREET

SHOOR Jewelers 9 A.M. to 9 P.M.

Washington's Birthday SPECIALS
ONE DAY ONLY—WEDNESDAY, FEB. 22

85 ONLY—MEN'S and LADIES' EX-PAN-S-I-O-N WATCH BANDS 1/2 PRICE

43 ONLY—SPECIAL GROUP TIE CLIP and GUFF LINK SETS 77c WHILE THEY LAST
50-Pc. WM. ROGERS SILVERWARE SET Service for 8—Including Chooft Reg. \$40.00 \$29.95

18 ONLY—10 KARAT GOLD CROSS and CHAIN \$2.88 REG. \$9.95

1 ONLY—\$15.00 RONSON COMBI NATION LIGHTER AND CASE \$5.99
1 ONLY—MAN'S 21 JEWEL ELGIN WATCH Reg. \$79.50 \$36.00 plus tax
1 ONLY—MAN'S 25 JEWEL 14 KARAT HAMILTON WATCH Reg. \$125.00 \$59.00 plus tax
1 ONLY—LADIES' 22 JEWEL HAMILTON WATCH Reg. \$85.00 \$30.00 plus tax

11 ONLY—LADIES' ELECTRIC Sunbeam SHAVERS \$7.88 REG. \$13.95

3 ONLY—LADIES' DRESS TIMEX WATCHES \$6.00 plus tax Reg. \$14.95
1 ONLY—DIAMOND DIAL BULOVA WATCH \$29.90 plus tax
1 ONLY—GENERAL ELECTRIC IRON Reg. \$9.95 \$5.00

10 KARAT GOLD Earrings \$1.96 REG. \$7.50 FOR BOTH PIERCED and NON-PIERCED EARS

1 ONLY—GENERAL ELECTRIC AUTOMATIC CAN OPENER Reg. \$24.95 \$16.88
4 ONLY—MEN'S JEWEL BOX With Bowler Emblem Reg. \$4.95 \$1.88
6 ONLY—MEN'S LEATHER BILL-TAINERS Reg. \$3.50 99c
COMMUNITY PLATE DON-DON OR NUT SERVERS 33c Reg. 99c

REG. \$1.00 PEARL EARRINGS 1c WITH THE PURCHASE OF 1, 2 or 3-STRAND PEARLS AT REGULAR PRICE OF \$1.00

CASH ONLY! ALL SALES FINAL! NO SALES TO DEALERS! DOORS OPEN 9 A.M.

SHOOR Jewelers
917 MAIN STREET—MANCHESTER



Washington's Birthday



MANCHESTER SHOPPING PARKADE

Fabulous Bargains on Famous Brand Fashions
Limited Quantities! Savings Up To 2/3!

special group! women's sportswear 2.90 values to \$12.98 Discontinued styles of Helen Harper sweaters and bandstand skirts and culottes.

Pre-teen Skirts, Blouses, Coordinates 1/2 PRICE
Children's Ski Pants sizes 3 to 6x. SALE 3.90
Children's Sleepers broken sizes and colors. SALE 1.79

special group! women's sportswear 4.90 values to \$12.98 Famous Olympic bulky sweaters and Personal proportioned length slacks in short, average and tall lengths.
Boys' Rayon Flannel Pants regularly 4.98-5.98. SALE 2.90

Evans Picone Women's Skirts special group from stock 1/2 PRICE

Girls' Dresses sizes 3 to 6x. regularly to 7.98. SALE 2.90

Boys' Sweaters robert bruce and other makes. regularly to 4.98. SALE 1.59

Women's Summer Sportswear special group including swim suits, jamaicas, sleeveless blouses and cotton knit tops. 1/2 PRICE

special group! women's sport skirts 3.90 values to \$12.98

girls' 7 to 14 winter coats 12.90 \$24.98 values

entire stock! girls' pre-teen coats 19.90 \$34.98 to \$39.98 values Marlee, Coatcraft and other makes. Preteen sizes, 6 to 14.

special group! women's sport skirts 3.90 values to \$12.98 Bobbie Brooks and other famous makes . . . all wool fabrics . . . solids, plaids and checks.

Boys' Husky Pants dress pants, polished cottons and corduroy. 2.00 OFF

Girls' Sportswear special group of skirts, coordinates and slacks sets . . . 1/2 PRICE sizes 7 to 14.

juniors' and misses' dresses - car coats maternity dresses 1/3 to 1/2 OFF

USE YOUR FAIR STORE CHARGE! SAVE!

Girls' Sweaters sizes 7 to 14. Regularly 4.98 SALE 1.99

boys' machine washable winter jackets 9.90 \$17.98 to \$24.98 values William Barry, Campus and other makes. 50 to choose from.

boys' boxer corduroy billy the kid pants 99c regularly \$1.98 Red, black, gold . . . sizes 3 to 7.

Girls' Blouses sizes 7 to 14. regularly 2.98-3.98. SALE 1.49

Children's Coat, Legging Sets sizes 3 to 6x, boys' and girls' styles. 1/2 PRICE

Reg. 2.98 Women's Headwarmer and Mitten Sets brushed orlon in solid colors and stripes. 1.00 set

Pre-teen Sweaters shaggy alpaca, r a i n o u s make. regularly 4.98-5.98. SALE 2.90

Curity Diapers first quality, packed dozen in box. SALE 2.59

men's famous make dress-sport shirts 1.99 \$4.00 and \$5.00 values From three top makers. Small, medium, large and extra large sizes.

Boys' 3 to 7 Billy the Kid Pants unlined. regularly 2.98. SALE 1.59

wm. barry - campus men's jackets 1/2 PRICE Suburban coats and jackets. 20 only.

Boys' Billy the Kid Pants unlined bedford cord. sizes 3 to 7. regularly 3.98. SALE 2.59

Store Hours 9 A.M. to 9 P.M. For This Spectacular Event!

Mari-Mads 491 MAIN STREET
NEXT TO GAS CO. MANCHESTER
FREE PARKING IN REAR

WASHINGTON'S BIRTHDAY BARGAINS



SPECIAL GROUP DRESSES
1/2 PRICE

SPECIAL GROUP GLOVES
1/2 PRICE

WASHINGTON'S BIRTHDAY
FEB. 22

ON SALE AT 9 A.M.
SLEEVELESS SWEATERS
WOOL OR NYLON **97c**

ON SALE AT 12 NOON
WOOL HOSIERY **29c**

ON SALE AT 6 P.M.
WOOL GLOVES **29c**

Keller's MEN'S WEAR
857 MAIN STREET
OPEN UNTIL 9 P.M. WEDNESDAY and THURSDAY

Many other items on sale throughout the day.
In case of inclement weather sale will be continued on Thursday, Feb. 23.

FAIRWAY WEDNESDAY 9-9 P.M.
"WHITE ELEPHANT" SPECTACULARS

DOUBLE WORLD GREEN STAMPS ALL DAY

ENTIRE STOCK SLIPPER SOCKS Values to \$2.19 Men's, Ladies', Children's 62c	Entire Stock DOLLS Reg. \$2.98-\$7.98 1/2 PRICE	ARM SIZE HULA HOOPS Reg. 59c 2c Each Limit 3
--	---	---

OUR REGULAR FAMOUS BRAND SOCKS (Can't mention the name) Reg. 39c Sizes 8-11 Whites 23c • SLIGHT IRREG.	OUR REGULAR FAMOUS BRAND—SOLID COLOR POLO SHIRTS (Can't mention the name) Reg. \$1.19-\$1.29 Size 1-4 • White • Yellow • Pink • Blue • Red 77c • Slight Irreg.
---	---

OPEN THIS WEDNESDAY UNTIL 9 P.M.

FAMOUS NAME T-SHIRTS Reg. 69c 47c S, M, L, XL Slight Irreg.	Entire Stock MITTENS and GLOVES Reg. 88c-\$2.88 1/2 PRICE	ENTIRE STOCK PIN-UP LAMPS Reg. \$2.98-\$3.98 1.44
--	---	---

TOY SPECIALS SCIENCE SETS AND DISH SETS Reg. \$1.00 48c	TOY SPECIALS REVELL • I.T.C. • MISSILE MODELS • DOG MODELS Reg. \$1.98 77c
--	--

Assorted Group CHILDREN'S HATS Val. to \$2.98 17c	Coates 'n Clark's Fig. of 12 Spoons THREAD Reg. 88c. Special 47c	METAL SKIRT HANGERS Reg. 15c 9c Also For Skirts and Trousers
---	---	---

WATCH FOR UNADVERTISED SPECIALS ALL DAY!
OPEN THURSDAY and FRIDAY TILL 9 P.M.

We GIVE WORLD GREEN STAMPS
FAIRWAY
MAIN STREET, MANCHESTER

SEARS
ROEBUCK AND CO.

SEARS 75 DIAMOND JUBILEE YEAR

WASHINGTON'S BIRTHDAY SALE

MANCHESTER PARKADE

4 Days
Wed.
Thurs.
Fri.
Sat.

Limited Quantities

Come Early!



Semi-Automatic Washer
Has Durable New Finish

\$98

• Includes delivery, normal installation
Cabinet has new Acrylic finish for long wear, easy care. Big, family-capacity wash tub is porcelainized to resist rust, stains. Efficient 6-vane agitator gets clothes clean. Switch now to modern washing!

KENMORE ELECTRIC DRYER
\$98

• Big Family Size

Budget Priced 11 Cu. Ft. Coldspot Refrigerator

\$158

• Stores 60-lb. of frozen food

A budget-saver and a space-saver, too! Only 26-in. wide, door open or closed, takes up less floor space than your old seven-footer. Has quiet magnetic door, egg rack shelf and porcelain enameled interior.



10 Cu. Ft. Freezer
364 Lb. Capacity

\$5 DOWN \$188
On Sears Easy Payment Plan.

• Large cabinet resists sweating and dripping
• 4 big storage sections and 2 wire racks
• Shell pink door liner, clean white interior



Kenmore 30-in. Electric Range
Has Clock Control

\$118

Giant 24-in. wide oven is clean-easy

Imagine the time you save with this automatic clock control for oven and appliance outlet... Just set it, forget it. It starts, stops as you pre-determine. So many other features. Buy it today!



Meteor Portable TV
143 SQ. IN. VIEW AREA
\$5 DOWN
Special \$98

17-inch (overall diagonal) screen has 143 sq. in. viewable area. Sharp image picture. UHF-VHF Model ... 128.00

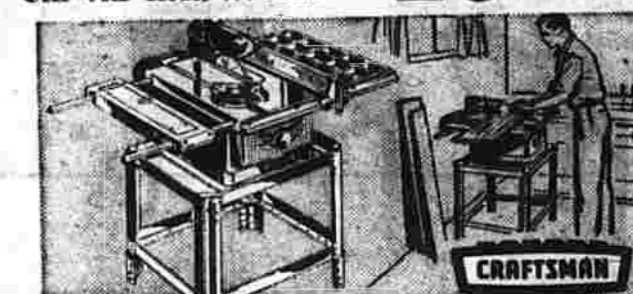


Transistor Portable
Reg. 16.95
14.88

Excellent performance. Durable non-breakable plastic case. Size 3x6x1 1/4 in. One battery, up to 60 hours. 4 transistors.

CLOSE-OUT ON 78 R.P.M. RECORDS

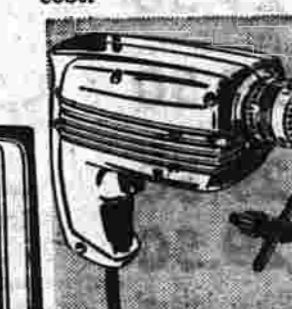
10 FOR \$1



Craftsman 8-in. Bench Saw

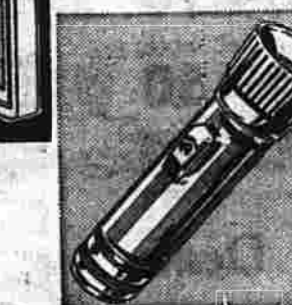
\$58

Tilting arbor saw cuts up to 2 1/4-in. Single wheel control tilts, raises, lowers blade. 3/4 HP capacitor-type motor, 16 1/4 x 30-in. bench. Guard, extensions at extra cost.



3/8-in. Electric Drill
Priced Low
Regular 19.95
Develops 1/2 HP
14.95

With spindle lock; Craftsman key-type chuck. Accepts most drill accessories. Heavy duty.



Handy Flashlight
59c
Great to delight men and boys. Red reflector, non-breakable lens.

WASHINGTON'S BIRTHDAY SPECIALS

- Latex Interior Paint Reg. 3.98. **2.59**
- High Gloss Finish Reg. 5.99. **4.49**
- Plastic Drop Cloth Reg. 1.29. **66c**
- Paint Roller Covers Reg. 48c. **34c**
- Hammers Reg. 1.22. **66c**
- Ceiling Light Fixture Reg. 2.89. **1.99**
- Wall Light Fixture Reg. 1.89. **1.19**
- Porch Light Reg. 1.89. **1.19**
- Masking Tape Reg. 1.29. **66c**

Only \$5 Down On Sears Easy Payment Plan

348 Middle Tpke. West

MANCHESTER, CONN.

Phone Mitchell 3-1581

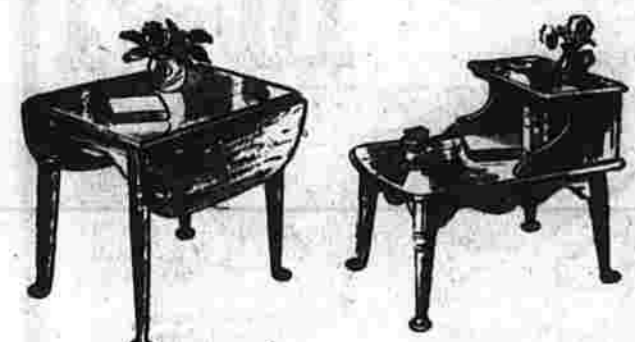
Store Hours: Monday, Tuesday, Saturday, 10 to 6 P.M.—Wednesday, Thursday, Friday, 10 to 9 P.M.

Watkins
OF MANCHESTER



4 Table styles
Choice
29.95

Take your pick of four handsome solid maple Colonial tables in rich nutmeg finish: 42 x 20-inch cocktail, 24-inch round lamp, 28 x 18-inch step or a drop-leaf end that opens from 25 x 18 to 25 x 36 inches. Solid, sturdy spoon-foot design with typical Colonial scrolled aprons. Buy one; a pair or entire set! \$29.95 each. (1st fl.)

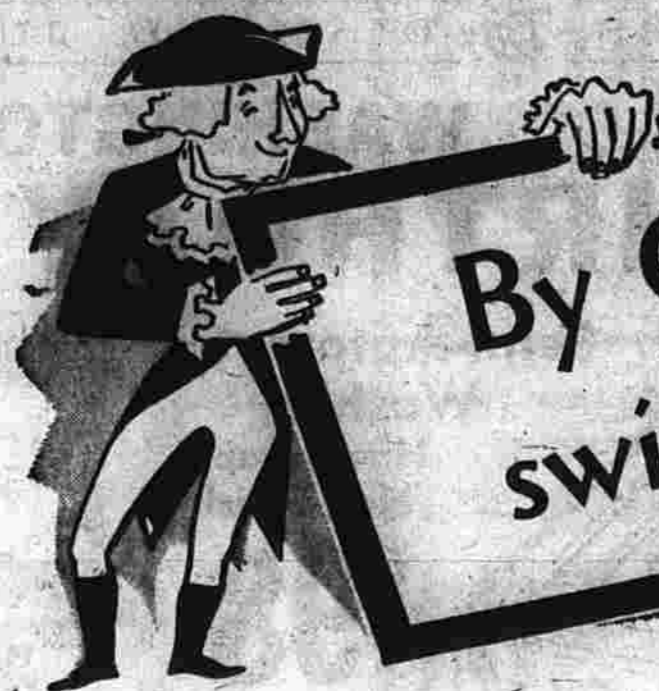


- (1) Reg. \$41.95 9 x 12 Fiber rug in green (Base) **37.50**
- (1) Reg. \$34.50 8 x 10 Fiber rug in turquoise (Base) **27.**
- (1) Reg. \$49.50 Nest of 2 mahogany tables; square tapered Sheraton legs (2nd fl) **29.50**
- (2) Reg. \$49.50 Mahogany step tables; square tapered legs; brass ferrules; cabinet section with doors (2nd fl) **29.50**
- (2) Reg. \$49.50 Mahogany end tables with square tapered legs, brass ferrules, shelf and drawer (2nd fl) **29.50**
- (1) Reg. \$49.50 Mahogany drum table with drawer (2nd fl) **29.50**
- (2) Reg. \$44.50 Cushman step tables, turned legs, russet maple finish on birch (1st fl) **29.50**
- (1) Reg. \$39.95 Cushman end table with shelf; russet maple finish on birch (1st fl) **24.50**
- (1) Reg. \$69.50 Solid cherry step table, tobacco brown finish; with drawer (1st fl) **34.50**
- (1) Reg. \$89.50 Solid cherry handkerchief table, tobacco finish; spoon feet (1st fl) **49.50**
- (1) Reg. \$79.50 Four-shelf nick-nack stand in solid cherry; tobacco brown finish; one drawer (1st fl) **59.**

\$99.50 Solid Maple Desks

69.50

From Watkins famous Old Ipswich Group! A two-drawer 32-inch drop-lid desk that features full platform bases with scrolled bracket feet; butterfly brasses. Useful, decorative, in living room, den or bedroom.



By George! Watkins swings the ax again!

(In case of bad weather the sale will continue Thursday)

If you've ever been to a Watkins Washington's Birthday Sale you know what to expect... a riot of bargains. And this year we've done it again. Hacked to the very roots one-and-few-of-a-kind and shopmarked items. Washington's birthday comes right in the midst of our famous Semi-Annual Sale, so in addition to the Washington Sale bargains listed here, there are a thousand and one more values! Though we normally close at 5:30 on Wednesdays, we'll be open until 9 p.m. so everyone can participate in these Birthday Savings. Be sure to read the important notice to the right.

Be sure to read the George Washington Sale details below. They're important!

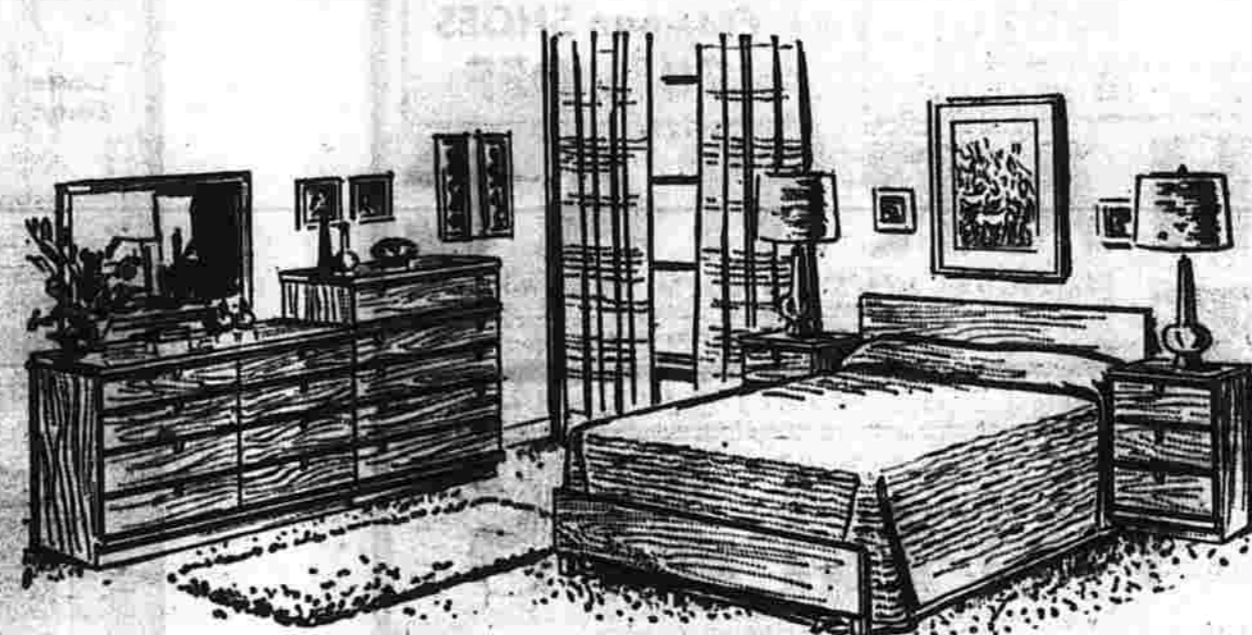
IMPORTANT

1. Main Street doors open at 9 a.m. Rear entrances closed until 9:45 a.m.
2. All values listed are cash-and-carry... no charges; no phone orders. We'll deliver pieces too large to take along. Immediate delivery only.
3. Prices of all Little Hatchet specials INCL U D E STATE SALES TAX. Tax must be added to all other Washington specials.
4. Locations are given for all items. For instance (1st fl) indicates First Floor; (Base) means Basement, etc.

Tomorrow, Washington's Birthday only, 9 to 9 p.m.

LITTLE HATCHET SPECIALS

- (1) Reg. \$19.95 Full size maple bed (3rd fl) **9.**
- (1) Reg. \$32.50 Boudoir chair, green stripe, as is (3rd fl) **3.**
- (8) Reg. \$139.00 9 x 12 Wool rug rugs, multi-colored (Base) **69.**
- (1) Reg. \$34.95 Bachelor chest, black and gold, 3 drawers, as is (2nd fl) **9.**
- (5) Reg. \$12.95 Maple chow tables, turned legs (2nd fl) **4.**
- (1) Reg. \$34.95 Record Cabinet, 2-door, black and gold, as is (1st fl) **9.**
- (150) 27 x 18-inch Carpet samples, wools, nylons, all colors, no two alike (Base) **1.**
- (4) Reg. \$36.50 Coffee tables; maple with plastic tops, turned legs (2nd fl) **10.**
- (1) Reg. \$65.50 Small occasional chair, maple legs, foam cushion, small patterned gold print (3rd fl) **29.**
- (1) Reg. \$89.50 Full size modern bookcase bed, beige walnut (3rd fl) **9.**
- (1) Reg. \$99.00 Twin size Goodrich foam bedding outfit; mattress with box spring; sample (3rd fl) **50.**
- (1) Reg. \$29.50 Contemporary walnut arm chair, coral seat (Base) **5.**
- (1) Reg. \$29.95 Brass serving wagon (Base) **9.**
- (1) Reg. \$129.00 Walnut Scandinavian settee; loose foam seat and back cushions, gold textured cover; slightly used (1st fl) **49.**
- (1) Reg. \$69.50 19 x 29-inch Ottoman, beige top grain leather (Base) **9.**
- (21) 27 x 54-inch Scatter rugs; wools, Nylons, all colors, no two alike. Values to \$19.95 (Base) **5.**
- (3) Reg. \$125.00 9 x 12 Oval hand hooked rugs; black borders, as is (Base) **39.**
- (11) Reg. \$18.95 Fiberglass scoop chairs, tapered metal legs; 5 Beige, 6 Coral (2nd fl) **7.**
- (1) Reg. \$279.00 Contemporary double dresser, honeytone maple (3rd fl) **98.**
- (1) Reg. \$56.50 32-inch Sprague & Carlton maple hutch-top only with two drawers and shelves (Base) **5.**
- (2) Reg. \$36.50 Boudoir chairs, 1 brown, 1 blue; as is (3rd fl) **5.**
- (1) Reg. \$89.95 Maple cedar chest with Hi-Fi record cabinet (3rd fl) **29.**
- (4) Reg. \$125.00 9 x 12 Hand hooked oblong rugs; black borders, as is (Base) **39.**
- (10) Pieces wool and Nylon carpets in assorted sizes from 7 x 15 to 13 x 15 feet (Base) **88.**
- (1) Reg. \$36.50 Maple step table with plastic top, turned legs (2nd fl) **10.**
- (4) Reg. \$18.95 Valet stands; mahogany finish (2nd fl) **5.**
- (2) Reg. \$7.95 Folding Bridge chairs; black with gray plastic upholstered seats (Base) **2.**
- (1) Reg. \$17.95 Foot stool, maple turned legs, small patterned gold plastic cover with pleats (Base) **6.**
- (1) Reg. \$125.00 Oblong hand hooked wool rug; rose border, as is (Base) **39.**
- (1) Reg. \$62.50 6 x 9 Hand hooked oval rug; black border, as is (Base) **19.**
- (4) \$79.00 Stair installations; 13 straight stairs laid in slightly-used 501 Nylon carpeting over heavy rubberized cushion, complete (Base) **49.**
- (2) Swivel base chairs, black iron bases, blue plastic upholstery (2nd fl) **9.**
- (3) Reg. \$39.95 Pine lamp tables with tapered legs, shelf (2nd fl) **9.**
- (6) Reg. \$8.95 Folding bridge chairs, black with gray seat and back upholstery **3.**
- (3) Reg. \$14.95 to \$19.95 6 x 9 ft. Fiber rugs (Base) **10.**



Modern Melba mahogany bedrooms 159. 3 pieces

This home-planner bedroom saves on housework... no dusting under the pieces... no marred tops for they're made of woodgrained plastic to match the Melba (blond mahogany fronts and ends of pieces! Included in this Washington Birthday special are the 42-inch 4-drawer dresser and mirror, 32" chest of 5 drawers and full size bed, exactly as shown. Reg. \$188.00. Allow 10 days for delivery (3rd fl.)

Choice of foam cushioned Chairs 99.50



Special purchase for Washington's Birthday Sale... two best-seller chairs that are usually \$149.00. We bought them in discontinued covers so you save nearly 1/2! The wing chair has a foam cushion, foam-filled back and includes extra arm covers; choice of Early American prints. (Allow 21 days for delivery). The lounge model also has a foam seat and a foam-filled attached-pillow back; comes in prints and textures. (1st fl.)

LITTLE HATCHET SPECIALS

- (1) Reg. \$89.95 Contemporary beige cedar chest with Hi-Fi record compartment (3rd fl) **29.**
- (1) Reg. \$185.90 3 Piece French Provincial bedroom group; full size bed, dresser with mirror and chest (3rd fl) **90.**
- (1) Reg. \$69.50 5 Piece dinette set in bronze tone; table and four chairs, plastic top (Base) **20.**
- (2) Reg. \$36.50 Maple drum tables with plastic tops; turned legs (2nd fl) **10.**
- (4) Reg. \$19.95 9 x 12 ft. Fiber rugs (Base) **15.**
- (2) Reg. \$14.95 Twin size upholstered headboards; (1) char-treuse, (1) blue plastics (3rd fl) **2.**
- (1) Reg. \$79.80 Set of four mahogany shield back dining chairs; burgundy-stripped seats; set (Base) **25.**
- (1) Lot of used cotton carpeting, beige coloring (approximately 55 to 60 sq. yds) 12 ft. widths seamed; the lot (Base) **119.**

More Washington Values

- (1) Reg. \$69.50 Contemporary dropleaf lamp table in walnut; round tapered legs, one drawer (1st fl) **39.50**
- (2) Reg. \$34.95 Solid maple end tables with turned legs and shelf (1st fl) **12.95**
- (5) Reg. \$34.95 Solid maple lamp tables with square tops, shelf, turned legs (1st fl) **12.95**
- (6) Reg. \$34.95 Wagon seat cocktail tables, solid maple turned legs (1st fl) **12.95**
- (9) Reg. \$24.95 Cobbler-bench cocktail tables, turned legs, solid maple (1st fl) **12.95**
- (8) Reg. \$23.95 Solid maple step tables, turned legs (1st fl) **12.95**
- (1) Reg. \$198.00 Love seat, foam cushions, box pleats, brown and beige print (2nd fl) **98.**
- (3) Reg. \$379.00 84-inch Sofas; tufted back and arm fronts; foam cushions. Choice of Rose-beige, Toast or Eggshell damask (2nd fl) **198.**
- (1) Reg. \$229.00 Lawson sofa; two foam cushions, green and red print on beige, box pleats (2nd fl) **129.**
- (1) Reg. \$156.00 Lawson lounge chair; foam cushion, brown damask cover, kick pleats (2nd fl) **79.**
- (1) Reg. \$119.00 Low-back wing chair; foam cushion, green-and-red print on beige, box pleats (2nd fl) **59.**



WATKINS BROTHERS, Inc.

935 MAIN STREET, MI 3-5171

ODD CUPS, SAUCERS
SALTS and PEPPERS



Spinning Wheel Planters REG. \$5.00 **\$3.98**
Pine What-Not Shelves REG. \$10.00 **\$5.98**
Group of Lamps 1/2 price
All English Brass Plaques 1/2 price
• SEVERAL ONE OF A KIND SPECIALS •

Washington's Birthday Only!

FREE PARKING NEXT TO TOP NOTCH MARKET
ODDS ENDS TABLE
OPEN 9 a.m. to 9 p.m. FEB. 22

SORRY, NO GIFT WRAPPING ON SALE MERCHANDISE . . .

WILTON'S Gift Shop

964 MAIN ST. PHONE MI 9-4011

OPEN TONIGHT TO 9

Leonard's SHOES
881 MAIN ST
MANCHESTER

SAVE DOLLARS
ON WASHINGTON'S BIRTHDAY

SMALL GROUP **WOMEN'S SHOES** **\$4.99**
Reg. to \$12.00

VITALITY and TRIM TRED **\$7.99**
Every suede shoe in stock regardless of cost. Black, brown, Etc.
New toe—New heels. Reg. to \$14.95

BRUSHED NYLON **SNEAKERS** **\$2.79**
For women. Black, tan, toden green, "N" and "M" widths. Save \$2.00

WOMEN'S **MOCCASINS** **\$1.99**
For street wear, etc. Reg. \$3.95

MEN'S **SNAP JACKS** **\$6.99**
From 6 1/2 to 12. Reg. \$9.95

Washington's Birthday SALE

at **HARMAC'S**

---SPECIAL GROUPS---

FROM OUR REGULAR STOCK

KNIT and SPORT **SHIRTS 99c** Reg. \$4 to \$7.95 **1.99**

SHOP EARLY—LIMITED QUANTITIES

SLACKS
Reg. \$7.95-\$9.95 **\$3.99**

BELTS 79c
Reg. \$1.00-\$2.50
TIES 69c—3 **\$2.00**
Reg. \$1.00-\$2.50

JACKETS
Reg. \$19.95-\$35 **\$9.90**

ROBES
Reg. \$6.95-\$17.95 **\$4.99**

ALL SALES FINAL

SPORT COATS
Reg. \$39.95-\$45.50 **\$9.90**
Another Group 1/2 Price

TOPCOATS
Values \$39.95-\$59.95 **\$9.90**

SUITS
1/2 PRICE

Freeman SHOES
20% OFF

HARMAC

DISTINCTIVE MEN'S and BOYS' WEAR
946 MAIN STREET — MANCHESTER
FREE PARKING IN TOP NOTCH LOT

TWEED'S

773 Main St.

SALE

Wonderful Opportunity to
Replenish Your Wardrobe

WITH SAVINGS UP TO
1/2 OFF ORIGINAL PRICES
ON.....

- COATS
- SUITS
- DRESSES
- SWEATERS
- BLOUSES

it's the **TRUTH!**

YOUR BEST DEAL IS ALWAYS AT MORIARTY BROTHERS

COMET FOR 1961



"The Better Compact Car"

The ONLY compact with fine-car styling. 12,000 miles or 1 year warranty. Radio, heater, transmission extra. Only \$199 down. Prices start at **\$1898**

MERCURY METEOR "600"



Priced right in the heart of the low-price field. 12,000 miles or 1 year warranty. Radio, heater, transmission extra. Only \$295 down. Meteor 600 2-door sedan for '61. Prices start at **\$2022**

LINCOLN CONTINENTAL

For 1961



Classic beauty in a smart new size...engineered for unprecedented reliability. Come see it!

1961 ENGLISH FORD ANGLIA

\$1495

The better buy of the imports. Up to 35 miles per gallon. All vinyl interior, tubeless whitewall tires, heater, defroster, directional signals. List price \$1675.



Don't Miss This

SPECIAL BONUS OFFER

Starts February 22

GOOD THROUGH SATURDAY, FEB. 25

IT'S THE GREATEST!!

10,000

20c GREEN STAMPS GIVEN WITH THE PURCHASE OF ANY NEW 1961 LINCOLN-MERCURY, COMET or ENGLISH FORD

5,000

20c GREEN STAMPS GIVEN WITH THE PURCHASE OF ANY SAFE-BUY USED CAR—PRICED AT \$195 or MORE



USED CARS

See Moriarty Brothers' fine stock of SAFE-BUY used cars — all specially priced for this sales event. REMEMBER: We'll be here tomorrow to service the cars we sell today!



MORIARTY BROTHERS

Lincoln — Continental — Mercury — Comet — English Ford
301-315 CENTER ST., MANCHESTER—MI 3-5135

FAMOUS 'Jeep' VEHICLES

NOW AVAILABLE AT

Moriarty Brothers

MANCHESTER



A long-established dealer now ready to bring you 'Jeep' Vehicles—world famous for ruggedness, versatility and economy.

'Jeep' vehicles are built to deliver MORE power — BIGGER payloads — BETTER performance at LOWER cost.

For All Your Transportation Needs

Moriarty Brothers

301 CENTER ST., MANCHESTER—MI 3-5135
SEE OTHER MORIARTY BROTHERS NEWS ON PAGE 17-S

Land O Fashion
889 MAIN STREET

Early Bird Special

Cotton Blouses 1.97
ORIG. 3.98-5.98
OVER A HUNDRED TO CHOOSE FROM
PLAIDS, PRINTS, CHECKS, SOLIDS

WOOL SKIRTS
EVERY WOOL SKIRT IN STOCK 4.97 Orig. 10.98-17.98
HUNDREDS TO CHOOSE FROM

WOOL SLACKS
Fully Lined 5.97-7.97 Orig. 14.98

WINTER COATS
29.90 Orig. 49.98-59.98 49.90 Orig. 98.00-110.00

2 P.C. COTTON COORDINATES
6.97 Orig. 12.98

ALL SALES FINAL ★ LIMITED QUANTITY
USE YOUR LAND O FASHION CHARGE
OR CONNECTICUT BANK and TRUST CO. PLAN

GRAND UNION -- Manchester Parkade

OPEN WEDNESDAY

Washington's Birthday



DOUBLE STAMPS Every Wednesday

Fruit Cocktail Del Monte 30-oz. Can 35c	ICE CREAM Freshpak 1/2 Gallon 59c	LIPTON Tea Bags Doal Pkg. of 48 Bags 49c	MOTT'S PROCESS A.M. and P.M. Quart Can 27c
---	---	--	--

SAVE CASH and STAMPS at GRAND UNION

PRICES EFFECTIVE WASHINGTON'S BIRTHDAY, WEDNESDAY, FEBRUARY 22

Grants
KNOWN for VALUES

WANT MORE FOR YOUR MONEY? KEEP YOUR EYES ON GRANTS

BIRTHINGTON WASHDAY SALE

DEALERS STAY AWAY FROM OUR DOORS WE RESERVE THE RIGHT TO LIMIT QUANTITIES

'COVER GIRL' COTTONS... BIG IN NEWS, LONG ON SAVINGS
39c-59c on bolts
3 yds. 1

Remnants with plenty of fashion quality. They'll do what you want—home decorating or smart sports wear stylings. New wash 'n wear cottons in nice long lengths.
Advance Printed Pattern #854—50c

ONE BUNCH OF OLD SHOES 77c
For masses. Horrible styles and sizes. FAIR

DON'T TURN UP YOUR NOSE AT OUR MEN'S HOSE 27c
Who else would dare to sell patterns that smell. FAIR

ART GOODS Your Choice 37c
Assortment consists of hand-died, stamped scarves and collies that should be sold for a ridiculous price.

IT'S A TOY PARADE
Every toy worth \$1 is yours for only 66c

All games, sets, kits, reduced for this sale. They're all reg. \$1.00 educational as well as fun toys... paint outfits, jewelry sets, Dr. kits and so many more. Better grab them up... 'cause they'll go fast!

DRESSES 1.47 ea.	DIRTY BOOKS 7c ea.	IMPORTED LADIES' BRAS Pkg. of 3 97c	BATH SEPARATES LID COVERS, BATH MATS Excruciating colors. 41c	LIGHT BULBS 25-50-100 Watts 17c ea.
UMBRELLAS 77c	ASTORIA'S HOT PLATE 6.66	A FEW GIRLS' JACKETS 1.57	DRESSES 1.47	TABLE LAMPS 6.66
RUGS 1.87	NOVELTY PLANTERS 37c ea.	BACKWARD LADIES' SLACKS 2.17	LAMPS (AGAIN) GEE WHIZ! 8.88	Another Assortment Of RUGS 97c
PAY A VISIT TO OUR JUNK TABLE Values to \$1.00. 57c	Values to \$2.00. 1.17	NO. 1 ASSORTMENT Your Choice CURTAINS 97c	RELUCTANT WOOLENS! LADIES' SKIRTS 1.17	First quality mesh or plain stitch... SEAMLESS 'SIS NYLONS Regular 69c pair 2 \$1
OUR GIANT GYM NOW HAS A 7-FOOT PLATFORM SLIDE Regular 29.88 23.88	NO. 2 ASSORTMENT Your Choice CURTAINS 47c	Remarkable bargain even at Grants every-day low price... astounding at this sale price. Sheer, clear, lovely in a range of attractive Spring colors, plus white to match uniforms. Sizes 8 1/2 to 11.		

YOU MUST BE SATISFIED OR YOUR MONEY BACK

W.T. GRANT CO. PARKADE ONLY

ELEPHANT SIZED BIG BARGAINS

9 A.M. to 9 P.M. WEDNESDAY, FEB. 22

 <p>TAPE RECORDERS \$34.95 Transistor with tape, batteries, nice carrying case.</p>	 <p>TV \$9.95 Overhauled (Used)</p>
---	---

LOW PRICES IN ALL DEPARTMENTS

<p>STEREO Phonographs \$79.95 Up</p>	 <p>RECORDS 10c 12 for \$1 (New 96c)</p>	<p>HAMILTON BEACH ELECTRIC BLANKET \$14.95</p>
---	--	---

NEW 33 1/3 RPM RECORDS \$1.00 ea.

 <p>Clock Radios \$23.49 ZENITH RCA VICTOR (New)</p>	 <p>HOBART DISHWASHER \$179.95 "KITCHEN AID" REG. \$279.95</p>
--	--

<p>REFRIGERATOR \$9.95 Used—Overhauled</p>	<p>GAS RANGE 30" New \$139.95</p>	<p>THOR GLADIRON \$5 Sold New For \$109.95 Demonstrator</p>
---	--	--

Potterton's

Manchester's Largest TV-Radio, Record and Appliance Store
130 CENTER ST. CORNER of CHURCH ST.

WASHINGTON'S BIRTHDAY SALE

EVERY TOY IN STOCK REDUCED
FOR THIS SALES EVENT

TOY CHESTS
Reg. \$15.00 NOW **\$4.88**

WHIMSIE DOLLS
Worth \$8.00 **\$3.00** Each

\$25.00 SPRING HORSES \$10.00

ANY BOOK IN STOCK
Juvenile or Adult
20% OFF Publisher's Price

COCKTAIL and LUNCHEON PAPER NAPKINS, PLACEMATS, PARTY GOODS
ALL 1/2 PRICE STOCK UP NOW

DEMONSTRATOR PORTABLE TYPEWRITERS AT LOW BIRTHDAY SALE PRICES

ALL DOLLS, DOLL CLOTHES 1/2 PRICE
FOR THIS SALE

LIFE-SIZE 36" DOLLS \$6.00

WALLETS BRIEFGASES PLAYING CARDS BOXED STATIONERY DESK ACCESSORIES ENTIRE STOCK 1/3 off

REED'S MANCHESTER INC. PARKADE

Coming Soon

To Serve

Manchester

And All Surrounding Areas

A Big Bright Beautiful New

Watch For The Grand Opening!



Watch For The Grand Opening!

To Be Located At

725 Middle Turnpike East MANCHESTER



SAVINGS BANK OF MANCHESTER

EAST BRANCH

285 EAST CENTER ST., CORNER LENOX ST.

5th Anniversary CELEBRATION

FREE

ON February 23, 24, 27 and 28

This Beautiful, Light, Warm, Full-Size, Washable Famous Brand **BLANKET**

will be given to each person who opens a new account of \$25 or more, or who deposits \$25 or more to an existing account.

Additional Blankets may be obtained for only \$3.00 each plus a deposit of \$25.00 more to new or existing accounts

ALSO - During the entire Month of March the 5th ANNIVERSARY Celebration will be continued with this Special BLANKET Offer:

From March 1 to March 31 these wonderful Blankets can be purchased for only \$3.00 each with a deposit of \$25 or more to new or existing accounts at the East Branch only.

Your Savings Earn **3 3/4%** New Annual Dividend

Free Souvenirs
MEMBER FEDERAL DEPOSIT INSURANCE CORP.

The Savings Bank of Manchester **EAST BRANCH**

285 East Center St., Corner Lenox St.



OPEN FRIDAYS 9 A.M. to 8 P.M.

BY GEORGE, IT'S THE TRUTH-WE HAVE REALLY CHOPPED PRICES!

WASHINGTON'S BIRTHDAY SALE

SEE OUR CAR LISTINGS
In The Front Section
Of Tuesday, Feb. 21st
Issue Of The Herald

4 DAYS BIG SALE
Wed., Feb. 22
thru Sat., Feb. 25
OPEN 9 to 9

GET OUR DEAL and Real Service, Too
On The 1961 Chevy
OR CORVAIR
We Won't Be Beat

"OK" USED CARS AT ROCK BOTTOM PRICES
Don't Miss Our
"MINUTEMAN SPECIALS"

CARTER CHEVROLET COMPANY INC.
1229 MAIN STREET
MANCHESTER

THIS IS THE PLACE TO COME TO GET YOUR SHARE OF CHOPPED PRICES

TOTS & TEENS

Open till 9 Wednesday Night

FREE PARKING 956 MAIN ST. Facing OAK

Sno foolin', the cr-a-ziest values ever

WASHINGTON'S BIRTHDAY SALE

Cash Sales This Day Only • All Sales Final

Boys' Town lower floor

Boys' Winter Jackets
5.99 Orig. 14.98

Boys' Shirts
1.39 3 for 4.00 Orig. 1.98 to 2.98

Boys' Slacks
2.59 2 for 5.00 Orig. 3.98 to 5.98

Boys' Polo Shirts
1.00 3 for 2.75

Boys' Winter Jackets Suburbans, Dress Coats
10. & 13. Orig. 17.98 to 22.98

Boys' Sport Coats, Suits
5.99 to 8.99 Orig. 10.98 to 16.98

Boys' Sweaters
1.99 Orig. 3.98 to 6.98

Girls' Winter Coats 18.00
Orig. \$80 and \$85 virgin wool tweed, plaids, solids, with grow hems by famous makers, 4 to 6x with slacks, 7 to 14 coat alone.

Tots', Girls', Boys' Sno Suits 8.99
Orig. 14.98 to 17.98, 3 pc. styles with hoods or hats, orlon pile or quilt lined, poplins or nylons.

Girls' Dresses, Jumpers 2.99
Orig. 5.98 to 7.98 group, sizes 8 to 6x, 7 to 14 all by famous makers from regular stock. Chubby sizes 8 1/2 to 14 1/2 included.

Girls' Skirts Sizes 7 to 14 3.99
Orig. 5.98 to 7.98 wools, cottons, velvets, solid colors, plaids. Sizes 8 to 6x. Orig. 3.98, 4.98 . . . Now 2.99.

Girls' Blouses 'n Polos 1.39
Orig. 1.98 to 2.98, group sizes 7 to 14, blouses in plaids, prints, solids, roll up sleeves; cotton knit polos, in stripes and jacquards.

Prams, Sno Suits 5.99
Tots one piece. Orig. 10.98, 12.98, nylon blends or combed poplins, washable, hood or hat, button on mitt and feet.

Girls' Winter Jackets 5.99
Orig. 10.98, 12.98, group of 20 quilt lined cottons or wools, zip off or attached hoods.

Girls' Wool Slacks 3.99
Orig. 5.98 to 7.98, girls 7 to 14, washable wool blends in plaids or solids; sizes 3 to 6x. Orig. 4.98 . . . now 2.99.

Tots' 3 pc. Coat-Sets 15.00
Orig. 24.98 to 29.98, boys' and girls' 2 to 4 wool coat, hat and leggings, famous make from regular stock.

Lined Slack 'n Shirt Sets 2.99
Orig. 3.98 and 4.98, flannel lined corduroy or denim boxer slack 'n flannel shirt. Sizes 3 to 7, famous make.

CAMPUS Junior dept.

Teen & P'Teen Coats 20.00 Orig. 35. and 40.
All from regular stock by famous makers: tweeds, fleeces, camel hair, group of 30, pre-teen 10 to 14, junior 7 to 13.

Teen & P'Teen Dresses 5.00 Orig. 8.98 to 22.98
Cottons, wools, royal "O" in dresses or jumpers by famous makers . . . pre-teen 8 to 14, junior 7 to 13. Limited quantity. Come early.

Skirts, Weskits, Sweaters 1.99 Orig. 4.98 to 7.98
Skirts in wools, cottons, quilts, weskits in wools, orlon sweaters, juniors, pre-teens.

Teen Slacks, Bermudas 3.99 Orig. 7.98 and 8.98
Washable wool and acrylic blends, all wools, plaids and solids by famous makers. Pre-teen 8 to 14, junior 7 to 13.

Teen Flannel Pajamas 1.99 Orig. 3.98
Famous "Tom Girl" tailored pajamas, cord trim, attractive prints. Sizes 32 to 38.

Teen Bulky Sweaters 3.99 Orig. 5.98 to 8.98
Mohair and wool blends, brushed wools, bulky orlons; crew and turtle necks. Sizes 32 to 40. A good selection by famous makers.

Skirt & Weskit Sets 1/2 PRICE Orig. 10.98 to 22.98
Smart ensembles by famous makers in desirable solid tones or plaids, stitched pleat skirt and matching weskit, juniors, pre-teens.

Teen, P'Teen Blouses 1.99 Orig. 3.98 to 5.98
You'll agree these are desirable styles in prints, plaids, by famous makers, roll-up and long sleeves, pre-teen and junior sizes.

Teen, P'Teen Car Coats 5.99 Orig. 8.98 to 10.98
Smartly tailored in intermediate lined car coats in cottons, knit trim or suede collars.

Children's Misses' Sno' Boots 2.47 Orig. 3.95, 4.95	Infants', Children's, Misses', Teen Shoes 3.99 Orig. 5.98 to 9.98	Famous Make Boys' Shoes 5.99 Orig. 8.95 to 10.95
<small>Infants' 6 to misses' 2, for trimmed thermal or fleece lined rubber, red, white, brown.</small>	<small>Infants' high and low shoes, girls' and teen dressy or school shoes, 280 pair, discontinued styles, patents, oxfords, oxfords.</small>	<small>Discontinued styles of famous Geo. Fox, Gerberich Payne shoes. Sizes 8 to big boys' 8.</small>

FREE REFRESHMENTS

Free Gifts

For Everyone!

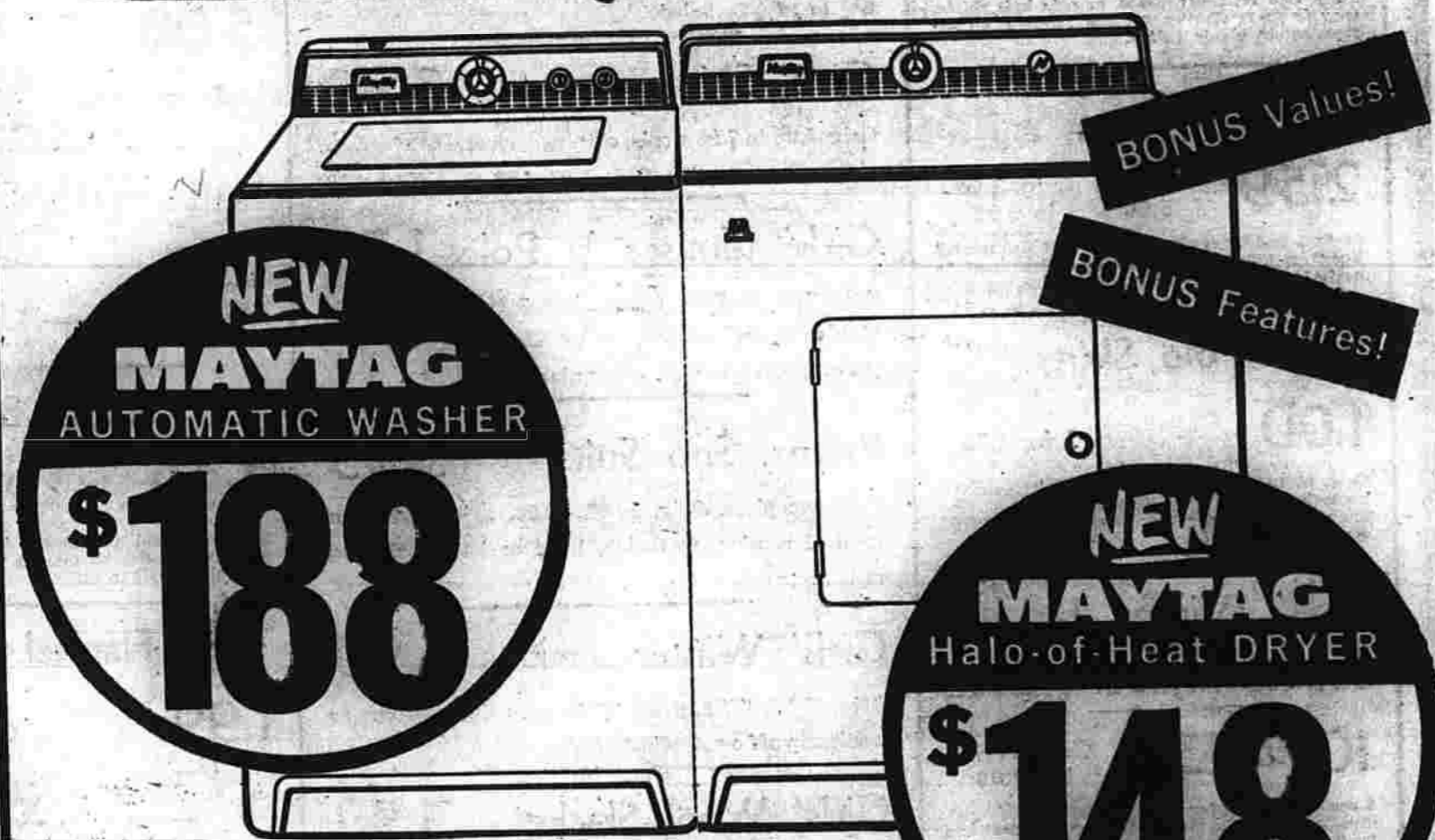


COME IN and MEET THESE POPULAR WDRG RADIO PERSONALITIES IN PERSON AT NORMAN'S WAREHOUSE

They'll be here, in person, Wednesday to greet you and make direct on-the-scene broadcasts from the warehouse. See Art Johnson from 9 A.M. to 12 noon and Gene Anthony from 5 P.M. to 8 P.M.

- While They Last "Operation 22" SPECIALS
- Harry... First Come, First Served! Many One-and-Two-of-a-Kind Bargains!
 - MIRROMATIC Automatic Coffeemaker \$7.77
 - UNIVERSAL Vacuum Cleaner \$39
 - SYLVANIA PORTABLE 6-7-8 Transistor \$16 To \$25
 - Westinghouse FRY PAN \$8.00
 - DORMEYER BIG MIXER \$19
 - MOTOROLA 17" Portable TV \$99
 - POLAROID Complete Outfit \$79-\$89-\$99
 - COLUMBIA AM/FM RADIO \$36
 - TIMEX WATCHES \$7.99
 - Ansoflex CAMERA \$3.99

MAYTAG
DOUBLE DIVIDEND SPECIALS
DOUBLE Savings... 22 Hours Only!



NEW MAYTAG AUTOMATIC WASHER
\$188

NEW MAYTAG Halo-of-Heat DRYER
\$148

AUTOMATIC WASHER 123
★ Lint Remover Tub ★ Selective Water Level Control ★ Lid Shut Off Switch ★ Unbalance Switch ★ Swirlaway Draining ★ Famous Maytag Gyrafoam Washing Action.

Halo-of-Heat DRYER 66c
★ Exclusive Halo of Heat ★ Revolving disc lint Filter ★ Reverse Air Flow ★ Safety Door ★ Automatic Timer ★ Safe, Low Heat.

ACT NOW!
Supply Limited

OUR POLICY DURING THIS SALE
All Maytag merchandise advertised in this ad carries full Maytag factory warranty and is warranted by us to be new equipment. Delivery and normal installations will be included. Equipment delivered in the crate, if preferred. Our usual liberal trade-ins will be offered. This offer good on merchandise in stock only. No mail or phone orders, please! We may never be able to repeat this offer. This is your chance to have the genuine Maytag you've always wanted and at big cash savings. These Double Dividend Specials will be available for 22 hours only!

★ ★ EASY TERMS TO SUIT YOUR BUDGET! ★ ★

SALE IS AT NORMAN'S WAREHOUSE Corner Pine & Forest St. Manchester

NORMAN'S OPERATION 22
in MANCHESTER • OPEN 22 Continuous HOURS
WASHINGTON'S BIRTHDAY ONLY
WED. 9A. to THURS. 7A.M.

Calling all... **NORMAN'S Furniture & Appliance WAREHOUSE** **SALE**



Prices blasted during "Operation 22" on Washington's Birthday only! Entire stock included in this gigantic Sell-Off! Many one-and-fer-of-a-kind items—Some "as-is" pieces, plus special cash and carry bargain buyers.

EASY TERMS ARRANGED

Amount	Down	Payments
up to \$100	\$5 DOWN	\$1.50 Weekly
up to \$200	\$10 DOWN	\$2.50 Weekly
up to \$300	\$15 DOWN	\$3.50 Weekly
up to \$400	\$20 DOWN	\$4.50 Weekly
up to \$500	\$25 DOWN	\$5.00 Weekly

HOOVER APPLIANCES AT LOW, LOW WAREHOUSE PRICES

Factory Representative Will Be Here To Demonstrate The HOOVER Products

FREE GIFT YAWNING
WE'LL GIVE YOU A VALUABLE IF YOU CATCH ANY SALESMAN

Sensational 15 Minute MYSTERY SPECIALS
At prices way below cost will be announced at Norman's warehouse throughout the day and night! Don't miss them!

- MAPLE DESK \$24.95 \$5
- 6-FT. FOAM LOUNGERS Reinforced Plastic \$69.95 \$25
- Blond, Walnut, Mahogany BOOKCASES \$34.95 \$15
- 2-PC. SOFA-BED SET Maple, Sofa, Chair and Recliner. Opens to sleep 2. \$189.95 \$88
- LINCOLN 8x12 RUGS \$3.49
- MAPLE BUNK BED Complete With Springs and Mattresses \$100 \$49
- BEDROOM SET Double Dresser Mirror, Chest and Bed. Silver Gray. \$189.95 \$98
- 3-PC. SECTIONAL Foam Cushions, 100% Nylon Fabric. Reg. \$319. \$188
- Twin or Full BOOKCASE BEDS Silver Gray, Maple, Walnut. Value to \$15 \$9.
- 2-PC. MODERN SOFA-BED SET Sleeps Two. \$169.95 \$79
- 3-PC. FOAM SECTIONAL Beige Fabric Reg. \$249 \$89
- 5-PC. KITCHEN SETS 36x46 Formica Top Table \$69.95 \$25
- 7-PC. KITCHEN SET Formica Top Table, Chairs. \$79.95 \$49
- INNERSPRING or BOX SPRING MATTRESS Twin and Full Size. Value to \$19 \$49.95
- INNERSPRING MATTRESS and BOXSPRING Just 2. \$1
- MAHOGANY DROP LEAF TABLES Odd Lot. 5 Leaves \$149.95 \$40
- 2-PC. LIVING ROOM Early American. Wing Back Foam Cushion \$249 \$99
- SILVER GRAY DOUBLE DRESSER BASE \$89.95 \$10

- SWIVEL ROCKERS and UPHOLSTERED CHAIRS Value to \$25 \$49
- 8x12 TWEED RUG Reg. \$49.95 \$10
- TWIN and FULL SIZE PANEL BEDS Maple and Oak. \$89.95 \$10
- 6x12 VISCOSE RUGS Foam Rubber Backs. \$49.95 \$39
- FULL SIZE HIDE-A-BED With Foam Cushions. \$189.95 \$99
- THAYER CRIS Choice of Finishes. Reg. \$29.95 \$19
- 4-PC. HOLLYWOOD BED SUITES Twin Size Mattress, Box Spring, Headboard, Legs. Reg. \$35 \$29.95
- WALNUT BUFFET With Accordion Front. \$89.95 \$38
- RECORD CABINETS Walnut and Lined Oak \$24.95 \$15
- 2-PC. FOAM LIVING ROOM Value to \$59 \$249
- ADJUSTABLE RECLINER Plastic. \$49.95 \$10
- ORTHOPEDIC TYPE MATTRESS and BOX SPRING Gold Bond Blue Bell. Sealy Reg. \$89.95 \$33
- 8x12 RUG PADS \$9.95 \$5

- 8x12 VISCOSE RUGS \$49.95 \$39
- FULL SIZE HIDE-A-BED With Foam Cushions. \$189.95 \$99
- THAYER CRIS Choice of Finishes. Reg. \$29.95 \$19
- 8x12 RUG PADS \$9.95 \$5

HOOVER SHAMPOO POLISHER
Watch carpet color spring back to new when Hoover does the work. You can scrub, wax and polish floors, too.

HOOVER CONVERTIBLE CLEANER WITH AUTOMATIC SHIFT!

HOOVER ELECTRIC FLOOR WASHER
Wet the floor with clean water and detergent—scrubs it thoroughly—then vacuum dries it instantly.

SALE IS AT NORMAN'S WAREHOUSE Corner Pine & Forest St. Manchester

follow the crowds to
HOUSE & HALE
GEORGE WASHINGTON'S BIRTHDAY SALE!
SHOE DEPT. SPECIALS! MAIN ST. CORNER OF OAK ST.

117 PAIR WOMEN'S FAMOUS NAME Sneakers Reg. \$4.95 **\$1.92**
Colors: Green, white with green trim. Broken sizes 4 1/2 to 10. Narrow and medium widths.

93 PAIR CHILDREN'S U. S. KEDS Reg. to \$3.75. Colors: Red, blue, black, brown. Infants' size 6 thru child's size 3. \$1.22	47 PAIR CHILDREN'S and BOYS' HIKING SHOES Reg. to \$11.95. Broken sizes. Child's 8 1/2 to boys' 8. HI 8" boots and oxfords. \$3.22
63 PAIR MEN'S "THOROGOOD" WORKING SHOES Reg. to \$18.00. Broken sizes. Black, brown, 8" working boots \$4.92 and oxfords.	69 PAIR WOMEN'S and CHILDREN'S SOU'WESTERN INSULAIR BOOTS Reg. \$3.95. Broken sizes. Red, blue, yellow. Women's 4 to 10; children 5 to 9. 92c
72 PAIR CHILDREN'S SLIPPERS Reg. to \$3.95. Broken sizes. Assorted colors. All leather or all corduroy. \$1.22	27 PAIRS OF CHILDREN'S and BOYS' SHOES Reg. to \$10.99. Broken sizes. Cordovan, white, white and tan bucks and brown oxfords. \$2.82

DILLON'S RED HOT USED CAR VALUES FOR

Washington's Birthday

Will Provide You With The Best In A Used Car At Prices That Will Amaze and Please You.

DILLON SALES and SERVICE

Your Ford Dealer in Manchester

319 MAIN ST. MANCHESTER

WASHINGTON BIRTHDAY SPECIALS
HOUSE & HALE

FREE PARKING REAR OF STORE—OPEN WEDNESDAY 9:00 to 9:00
FREE COFFEE SERVED to the army of people arriving between 8-9 a.m.

240 LBS. MAXWELL HOUSE COFFEE
regular or drip grind
69c lb.
(2 lbs. to a customer)

122 LADIES' SWEATERS
Pullovers—Cardigans—Bulkiess
Reg. to \$12.99
\$2c-\$1.92-\$2.92

46 FAMOUS BRAND NAMES GIRDLES, CORSELETTES
1/2 Price
Reg. \$5.95 to \$14.50.
\$2.99-\$8.25

On Sale At 12 Noon!
86 PAIRS WOMEN'S ALL WOOL SLACKS
flannels and fancies, 8 to 18 reg. to 7.99
3.22!

On Sale At 2 P.M.
12 "SUPER 10" TRANSISTOR RADIOS
American made, 10 powerful transistors, complete with 4 portable batteries, carrying case, earplug for personal use. . . black or red.
19.92!

On Sale At 12 Noon!
1500 PAIRS Famous Imperial Seamless Nylons
measured length, plain or mesh. LIMIT: 3 pairs to customer.
reg. 1.15 pair
52c pr.

SALE PRICE

66 WOMEN'S RAYON TRICOT VESTS and BLOOMERS (sizes 36, 44, 46)	reg. to 1.25	32c
300 CANNON TURKISH BATH TOWELS (20x40, ombre, stripes, plaids, solids)	reg. 79c 2 for 92c	
37 FLEATED and PLAIN SKIRT LENGTHS	reg. to 3.99	1.82
36 MIRACLE BLEND BLANKETS (machine washable, moth proof, 72x96) pink, blue, mint, yellow	reg. 5.99	3.92
5 7-Pc. SALAD SET (break resistant bowl, spoon, fork, 4 bowls)	reg. 5.99	1.82
7 26-Pc. COLONY MILK GLASS BUNCH BOWL SET (with cups and hanging hooks)	reg. 12.99	8.92
8 TOLE TABLE LAMPS (modern and Early American)	reg. to 12.99	7.92

On Sale At 12 Noon!
86 PAIRS WOMEN'S ALL WOOL SLACKS
flannels and fancies, 8 to 18 reg. to 7.99
3.22!

On Sale At 2 P.M.
12 "SUPER 10" TRANSISTOR RADIOS
American made, 10 powerful transistors, complete with 4 portable batteries, carrying case, earplug for personal use. . . black or red.
19.92!

On Sale At 12 Noon!
1500 PAIRS Famous Imperial Seamless Nylons
measured length, plain or mesh. LIMIT: 3 pairs to customer.
reg. 1.15 pair
52c pr.

On Sale At 12 Noon!
97 FULL FASHIONED FUR BLEND SWEATERS
cardigans and slip-ons, 34 to 40. reg. 12.99
4.92!

On Sale At 2 P.M.
39 BOYS' LAKELAND SPRINGWEIGHT JACKETS
plaids, solids, some reversible, 6 to 20.
reg. to 12.95
3.92!

On Sale At 12 Noon!
12 "SUPER 10" TRANSISTOR RADIOS
American made, 10 powerful transistors, complete with 4 portable batteries, carrying case, earplug for personal use. . . black or red.
19.92!

On Sale At 12 Noon!
1 CHILD'S RIDE 'M TOY
pedal drive 3 wheel tractor
reg. 19.95
4.92!

On Sale At 12 Noon!
145 BOYS' SKI CAPS
Leathers—Wool—Poplin
Reg. \$1.95 to \$3.95. Small head sizes.
22c

On Sale At 12 Noon!
12 "SUPER 10" TRANSISTOR RADIOS
American made, 10 powerful transistors, complete with 4 portable batteries, carrying case, earplug for personal use. . . black or red.
19.92!

On Sale At 12 Noon!
1 CHILD'S RIDE 'M TOY
pedal drive 3 wheel tractor
reg. 19.95
4.92!

On Sale At 12 Noon!
1 CHILD'S RIDE 'M TOY
pedal drive 3 wheel tractor
reg. 19.95
4.92!

On Sale At 2 P.M.
86 LADIES' 16 RIB UMBRELLAS
All American made, wide selection. LIMIT: 1 to a customer.
1.22!

MAIN ST. ONLY

Grant's **Washington's Birthday SALE** One Day Only Wednesday, Feb. 22

Men's and Boys' Cotton Flannel
BATHROBES \$1.00
Boys' 6-16—Men's S-M-L.

MISSES' BULKIES and SHAGGIES
SWEATERS \$3.00
OTHERS \$2.00. VALUES TO \$4.99

BOYS' LIGHTWEIGHT
JACKETS \$1.57
Sizes 6-16.

ROOM SIZE 9 x 12
RUGS \$15.88

WOMEN'S DARK SEAM
NYLONS 3 pr. \$1
Sizes 9-11.

OPEN WED. 9 a.m.—9 p.m.

VISCOSE FOAM RUBBER BACKED
RUGS 88c
24x36

GIRLS' Sweaters
Bulkies, Shaggies
\$3.99 VALUE
\$1.50

CHILDREN'S Pram Suits
REG. \$9.99
\$4.00

W. T. GRANT CO. MAIN STREET STORE

IN CASE OF BAD WEATHER, SALE CONTINUES THURS.
• OPEN THURSDAY 9:30 to 9:00 •

WASHINGTON BIRTHDAY SPECIALS

HOUSE & HALE

FREE PARKING REAR OF STORE—OPEN WEDNESDAY 9:00 to 9:00

FREE COFFEE SERVED

to the army of people arriving between 8-9 a.m.

On Sale At 2 P.M.
7 LIONEL
ELECTRIC TRAIN SETS
 atomic age model, rocket and helicopter cars, reg. 69.95 if purchased car-by-car.
18.92!

	reg.	SALE PRICE
37 WOMEN'S HATS	to 3.98	62c
33 FAMOUS NAME WOOL SKIRTS	to 17.99	6.92
6 JOHN WEITZ CORDUROY COATS (pile lined, leather trimmed)	reg. 29.99	14.92
57 BOYS' and YOUTHS' DRESS FELT HATS	reg. 2.50 and 2.95	52c
14 BOYS' TIE BAR and CUFF LINK SETS	reg. 2.00	52c
24 BOYS' STRETCH NOVELTY BELTS	reg. 1.00	22c
56 BOYS' STRING TIES	reg. 1.00	22c
21 BOYS' and YOUTHS' ALL WEATHER POPLIN COATS (zip lining)	reg. to 22.50	14.00
23 BOYS' and YOUTHS' LAKELAND and PROFILE WINTER JACKETS and SUBURBANS	reg. 17.99, 29.98	7.00, 11.00
48 BOYS' and YOUTHS' PANTS (wools, cords, chinos, reg. and husky)	reg. to 4.95	1.52
125 FAMOUS NAME SLACKS and CAPRI PANTS (tremendous selection!)	reg. to 18.99	6.82

On Sale At 7 P.M.
2 ELECTRIC HOSTESS TRAYS
 keeps food hot... size 20x18
 reg. 26.95
12.92!

150 Yds. FABRICS
 Wools, Wool Blends, Etc.
 Reg. to \$2.99. **42c** yd.

9 CAMP BLANKETS
 90% Wool
 Reg. \$6.95. **\$2.92**

On Sale At 4 P.M.
300 PAIRS WOMEN'S SHOES
 dress, sport, tailored, accent, rhythm step, valentine, classmate, air tread, cobbler, air police, velvet step, broken sizes 4 1/2 to 10, many colors.
 reg. to 16.99
\$3.92 pr.!

OPEN WEDNESDAY
 9:00 to 9:00

ON SALE AT 7 P.M. JUST 4!
100% PURE IMPORTED CASHMERE COATS
 Reg. \$69.99
\$22!

26 LADIES' POPLIN ALL SEASON COATS
 Zip-out Pile Lining 6 to 18
 Reg. to \$24.99. **\$10.92**

24 LADIES' REVERSIBLE WASH and WEAR POPLIN COATS
 6 to 16
 Reg. to \$14.99. **\$6.92**

FROM THE YARN SHOP!

	reg.	SALE PRICE
3 SPINNERIN SEVENTEEN PACK (21 oz. orlon savelle express yarn) (for loose, bulky sport sweater)	reg. 10.98	3.22
3 BEAR BRAND HEADLINER PACKS (enough for cardigan)	reg. 5.99	1.92
54 KNITTING NEEDLES (plastic and aluminum)	reg. to 1.20	pr. 22c
144 4-OZ. SKINS DAWN KNITTING WORSTEDS	reg. 1.19	45c
SPECIAL LOT STAMP GOODS (kitchen towels, hostess aprons, pot holders, toaster covers, etc.)	reg. to 2.98	92c
1100 BUCILLA 6 STRAND EMBROIDERY FLOSS (many colors)	reg. 5c	2c
333 STAR BRAND TATTING THREAD (solid and variegated)	reg. 10c and 15c	6c

56 LADIES' WINTER COATS
 Lamb's Wool or Pile Lined. Solid colors or tweeds. Sizes 6 to 18, 8 to 18, 14 1/2 to 24 1/2.
 Reg. to \$49.99.
\$26.92!

DRUG CLEARANCE

	reg.	SALE PRICE
HALO SHAMPOO	reg. 98c	49c
T-4-L SOLUTION	reg. 80c	40c
ERB HELP	reg. 1.35	68c
DECA-VI-SOL	reg. 4.95	2.48
FITCH HAIR TONIC	reg. 98c	49c
THOREXIN COUGH MEDICINE	reg. 1.25	62c
PHISODERM DETERGENT CREAM	reg. 1.49	75c
100 TAB. VAYLO VITAMINS	reg. 3.49	1.75
DR. SCHOLL'S BUNION PADS	reg. 45c	22c
WAMPOLE V. M. PREPARATION	reg. 1.79	85c
85 TAB. DOAN'S PILLS	reg. 1.75	89c

3 HAND OPERATED SNOWPLOWS
 Reg. \$9.95. **\$3.92**

1 KENWOOD BLANKET
 TWIN
 Reg. \$12.95. **92c**

152 LADIES' WOOL SKIRTS
 Hip Stitched, Unpressed Pleats, Sheath, Walking, Plaids, Solids. Reg. to \$10.99. 8 to 18.
\$3.62!

DOUBLE J.N. STAMPS
 With All Cash Sales
 Totaling \$10.00 or More

68 SOFA PILLOWS
 Antique Satin Covered, Kapok Filled, Button Style. Many colors. Reg. \$1.99.
92c!

64 LADIES' FADED DENIM and TWILL DUNGAREES
 Reg. to \$3.99. **\$1.62**

47 SUB-TEEN DRESSES and JUMPERS
 Size to 14
 Reg. to \$14.99. **\$3.92**

57 MISSES' and WOMEN'S STREET DRESSES and COSTUMES
 reg. to 49.99
5.00 to 15.00!

	reg.	SALE PRICE
53 BOYS' PAJAMAS (sizes 8 to 20)	reg. to 3.50	1.92
7 WASHABLE PLAID LOUNGING PAJAMAS	reg. 5.99	2.92
29 DUSTERS	reg. to 17.99	8.82
1 ONE-MAN DRUM SET (floor sample)	reg. 5.99	92c
1 SCHOENBUT SPINET TOY PIANO and BENCH	reg. 19.95	3.92
26 PYREX REPLACEMENT BOWLS (2, 3, 4 quart sizes)	reg. to 1.95	32c
8 TOILET SEATS (white, blue, black, yellow)	reg. to 13.95	3.92
19 RADIATOR COVERS (various sizes)	reg. to 6.95	58c
8 RUBBERMAID DRAINBOARD TRAYS (red, pink)	reg. 4.29	1.92
77 WOMEN'S SLACKS (rayon flannel, 10 to 16; 20 1/2 to 26 1/2)	reg. to 3.99	2.52
105 LADIES' COTTON SKIRTS and BLOUSES	reg. to 7.99	1.92
240 WOMEN'S NYLON STITCHED RAYON TRICOT PANTIES (elastic leg)	reg. 59c	22c

31 SUB-TEEN PLEATED SKIRTS
 All Wool and Wash and Wear. Sizes 8 to 14, 12 1/2 to 16 1/2. Reg. to \$9.99.
\$3.22!

IN CASE OF BAD WEATHER, SALE CONTINUES THURS.

• OPEN THURSDAY 9:30 to 9:00 •

Average Daily Net Press Run
For the Week Ended
Dec. 31, 1960
13,314
Member of the Audit
Bureau of Circulation

Manchester Evening Herald

Manchester—A City of Village Charm

The Weather
Forecast of U. S. Weather Bureau
Cloudy tonight, occasional drizzle late tonight. Low 35 to 40. Cloudy with occasional rain Thursday. Highest near 50.

VOL. LXXX, NO. 121

(FOURTEEN PAGES)

MANCHESTER, CONN., WEDNESDAY, FEBRUARY 22, 1961

(Classified Advertising on Page 12)

PRICE FIVE CENTS



Bargains galore, and free coffee to boot. That's what shoppers found on Main St. this morning. House and Hale Inc. set up this free coffee stand on the sidewalk. The coffee was going just as fast as the white elephants. (Herald photo by Sateris.)

Meet with Peacemakers

Engineers, Airlines Bid to Conference

Washington, Feb. 22 (AP)—The government today intensified efforts to settle the flight engineers' walkout that has brought air travel to a standstill in many parts of the country.

Secretary of Labor Arthur A. Goldberg asked both the engineers' union and airline officials to stand by for conferences with himself, with a peacemaking commission named by President Kennedy, and possibly with each other.

Goldberg discussed the strike this morning with Kennedy. He scheduled an afternoon meeting with Ronald Brown, head of the Flight Engineers International Association. The three members of the commission appointed by Kennedy yesterday were arriving in Washington for a prompt start on their inquiry.

And in Miami, Fla., AFL-CIO president George Meany urged that airline employees comply with the appeal by Kennedy for a return to work.

The Engineers union said it was canvassing its members on whether to yield to the appeal.

But, a noon statement said, the union was having difficulty in completing the poll because of litigation over the walkout.

"Many of the people who should have been doing such work spent all day yesterday and late into the night involved in court proceedings with the airlines," the statement said.

"Our largest chapter executive board, for instance, was tied up in court in New York City for 12 hours yesterday until 11 p.m. last night."

The statement demanded a "written promise from the airlines regarding lawsuits and re-employment proceedings."

It also said there were many questions the men wanted answered.

"Our men have told us to ascertain whether western is in or out of an agreement," the statement said.

"If western is out, the membership indicates that it will not return to work."

Western announced yesterday that it was firing its flight engineers.

Storms, Floods Hit Dixie Areas

(By THE ASSOCIATED PRESS)

Weather-weary Alabama absorbed a small tornado early Wednesday, then sat out a day of more rain.

The tornado clipped Tuscaloosa twice, knocking down trees and damaging property in the North-Hampton School area and the plush Highlands area. No serious injuries were reported.

On the heels of the tornado, the Weather Bureau issued a severe weather warning, forecasting possible thunderstorms and damaging winds in seven counties in north and west Alabama.

Meantime, the rain continued over much of the state for the sixth straight day, giving an additional push to rising waters that already have forced thousands out of their homes.

The Alabama Highway Department said the high water forced a traffic halt on six highways.

The Red Cross estimated that nearly 1,000 persons were displaced by high water in Jefferson

(Continued on Page Two)

Crowds Storm

Manchester in Treasure Hunt

Sunshine and coffee were provided by weathermen and merchants today as hundreds of shoppers invaded Manchester stores in search of white elephant treasures and merchandise bargains.

George Washington's Birthday White Elephant Sale was termed a success as shoppers literally swarmed into town and got lost in merchant mazes.

The stores will be open until 9 o'clock tonight.

Burton's had more than 200 persons waiting for their doors to open. One woman arrived at 4 a.m. in quest of one of two \$40 cashmere coats, a \$100 value, and she got it.

Coffee was served at Burton's and House and Hale prior to the 9 a.m. opening. The unique outdoor coffee stand in front of House and Hale gave free coffee to some 250 shoppers.

"A very orderly crowd this year," said Bruce Watkins. Last year, the crowd broke the lock on the rear door and stampeded in.

"Today we had about 150 persons

Before Invention of ICBM

First President Shared Man's Doubt About Man

By JAMES MARLOW
(AP News Analyst)

Washington, Feb. 22 (AP)—In the midst of honoring George Washington today and wishing everyone could be like him, it might be well to remember that man's doubt about man were just as real in his time as they are now.

If today there is chaos in Laos, a massacre in the Congo, and a riot in the United Nations, this country was in such a developing mess 174 years ago Washington thought America faced anarchy unless it found some way to control itself.

The Constitution which the Founding Fathers then manufactured in convention in Philadelphia in 1787 is a monument to man's misgivings about man's good judgment and intentions.

Even at the beginning of the Philadelphia meeting, Washington, presiding over it, saw the big states try to work in a gimmick that would let them dominate the smaller states.

There was struggle over that at the very moment those early Americans were trying to find a way to avoid struggle. In the end this, like so much that went into the document, was finally solved in compromise.

An arrangement which did not base its hopes for the future on man's wisdom, generosity, usefulness or noble purpose. It just assumed men would be trying to inch in on one another for untold generations.

So it laid down rules which spelled out what the three branches of government and individuals and couldn't do and how far they could go and couldn't, if even the Founding Fathers themselves were failing.

At the very moment those Apostles of Freedom were mortgaging together the bricks of liberty within the Constitution they agreed to let slaves be imported for another 20 years.

Washington, after two terms as President, surely had no illusions about mankind. His farewell address is a catalogue of warnings

Rivals Dispute

On Governor's Budget Item

(By THE ASSOCIATED PRESS)

The Democrats charged today that Republican opposition to administration budget proposals and suggested alternatives are heading the state toward an income tax revolt.

The Republicans countered by alleging "continuing distortion of the facts" by the Democrats.

In an exchange of statements, State Senate Majority Leader Louis I. Gladstone, D-Bridgeport, said the Republicans want to "soak the consumer for every possible tax dollar," and GOP State Chairman Edwin H. May Jr. replied he is "appalled" that he (Gladstone) would make such an utterance on Washington's birthday.

Accusing the Republicans of advocating tax "gimmicks" to hit the consumer, Gladstone said the latest is a proposal to make Connecticut families pay a new sales tax on gas, electric and water services.

He referred to a statement Monday by State Rep. Robert T. Quinn, R-Madison, House chairman of the finance committee. Quinn said he thought it would

(Continued on Page Three)

Ileo Blasts UN Peace Plan As Move to War in Congo

State News Roundup

Blaze Kills Cripple, 72, In Coventry

South Coventry, Feb. 22 (AP)—A 72-year-old cripple perished early today as fire swept his rural home.

Authorities said the body of Samuel Cole was found in the kitchen near a rear door. They said he apparently was overcome by smoke and suffocated. Cole had been in bed for several years because of his crutches.

More than 100 firemen from South Coventry, Eagleville and Willimantic battled the flames that tore through the 6-room frame structure in Flanders River Road. The house was said to be about 150 years old.

About 1,900 feet of hose was used to get water from the river in an effort to check the flames. There were no injuries reported among the firefighters.

Cause of the blaze was not immediately determined.

Proteus Sails

New London, Feb. 22 (AP)—The missile submarine tender Proteus sailed yesterday towards a threatened turbulent reception in Scotland's Holy Loch.

A spokesman for the Direct Action Committee Against Nuclear War—a pacifist organization—said in London a mass attempt will be made May 21 to board the tender.

The attempt, he said, will be launched at the end of a mammoth protest march 350 miles from London to Holy Loch.

He added that the committee's plan is to board the tender in the British port of Glasgow, where it would "have the immediate effect of encouraging politics on the most bitter racial lines."

Sir Edgar Whitehead, prime minister of Southern Rhodesia, supported Weleny's stand.

The British were caught in a cross-fire, for nationalists are

(Continued on Page Two)

Whites Bar Negro Rule In Rhodesia

Salisbury, Southern Rhodesia, Feb. 22 (AP)—Premier Sir Roy Welensky mobilized his white-supremacy government of the Central African Federation today against a race war he charges the British government is inspiring by insisting on more self-rule for Negroes in Northern Rhodesia.

Sir Roy called up 5,000 territorial troops and summoned the federal parliament of the federation—linking Southern and Northern Rhodesia and Nyasaland—for an emergency session Friday.

From the federation's capital here he flatly rejected the British plan to enlarge the North Rhodesia Parliament to give the Africans a louder voice in governing the protectorate.

In Northern Rhodesia the five members of the government executive council, from Welensky's United Federal party, signed a protest against the British plan. John Roberts, the party leader in Northern Rhodesia, termed the plan "abhorrent and unacceptable."

Under the new constitution proposed by London the property, income and educational qualifications for voting would be relaxed to increase the number of African voters by 10 times to a total of about 70,000.

Sir Roy, 53-year-old former boxer and trade union organizer, says most of the Africans are not capable of governing themselves in Northern Rhodesia, where they outnumber whites about 2,250,000 to 72,000. In a broadcast last night, Sir Roy said constitutional arrangements should be given to men who contribute to the wealth and welfare of the country and who are "capable of exercising it with judgment and public spirit."

The British plan, he charged, would "have the immediate effect of encouraging politics on the most bitter racial lines."

Sir Edgar Whitehead, prime minister of Southern Rhodesia, supported Weleny's stand.

The British were caught in a cross-fire, for nationalists are

(Continued on Page Two)

Labor to Push Kennedy Plan To Assist Aged

Miami Beach, Fla., Feb. 22 (AP)—Organized Labor is launching a big lobby organization with interested outsiders to help put over President Kennedy's social security health aid plan for the aged.

The AFL-CIO announced here yesterday that it is combining forces with other supporting groups to combat opposing drivers in the American Medical Association, the American Bar Association and such business groups as the U.S. Chamber of Commerce and National Association of Manufacturers.

Kennedy has proposed an extra fourth of one per cent payroll tax on workers and their employers to finance an aged health aid plan added to the Social Security system. The new program would be financed under former President Eisenhower's administration to finance health benefits for the aged out of the federal treasury.

George Meany, AFL-CIO president, said in announcing the new organization to push for the Kennedy plan that financing health benefits for the aged through Social Security would enable workers to buy insurance against health costs in their advancing years.

(Continued on Page Thirteen)

Pro-Red Raps Call For Neutral Laos

Tokyo, Feb. 22 (AP)—Prince Souphanouvong, leader of the pro-Communist Pathet Lao guerrillas, today denounced King Savang Vatthana's declaration of neutrality for Laos in the Cold War.

Souphanouvong, whose forces are allied with those of rebel Capt. Keng La against the western-backed Laotian government of Prince Boun Oum, said in Hanoi all the king's decisions were taken under armed pressure from the rebels, as the Communists term Boun Oum's government.

The king also called on neighboring Cambodia, Burma and Malaysia to send a commission to Laos to help guard against foreign intervention.

(Continued on Page Two)

Astronauts Ready For Space Flight

Cape Canaveral, Fla., Feb. 22 (AP)—Two astronauts training to be the first American in space reported enthusiastically today that they are ready to ride the next Redstone rocket if it carries a manned capsule.

"The answer is an overwhelming yes—a resounding yes," said Alan B. Shepard Jr., 37-year-old Navy commander from East Derry, N. H.

"Absolutely," commented John H. Glenn Jr., 39-year-old Marine lieutenant colonel of New Concord, Ohio.

They were among three space candidates named yesterday to begin final training for the first manned flight, a suborbital trip expected within two or three months.

The third, Air Force Capt. Virgil E. Grissom, 34, was in Bermuda, where yesterday he manned a control during a successful launching of the Project Mercury Man-in-Space Capsule aboard an Atlas missile.

Officials of the National Aeronautics and Space Administration said, however, that Grissom is just as ready as Glenn and Shepard to make the trip.

(Continued on Page Two)

Sends Message to Nikita Kennedy for Better U.S., Red Relations

By JOHN M. HIGHTOWER
Washington, Feb. 22 (AP)—President Kennedy today sent a personal message to Soviet Premier Nikita Khrushchev expressing hope that current diplomatic conversations will bring better Soviet-American understanding.

Kennedy gave the message to U.S. Ambassador Llewellyn Thompson, for delivery to Khrushchev, at a final conference today set out by air tomorrow for Moscow.

Thompson spent about 15 minutes at the White House in company of Secretary of State Dean Rusk.

After he left, White House press secretary Pierre Salinger made the following statement:

"Ambassador Thompson has completed his consultation in Washington and leaves today to return to his post in Moscow. In a series of meetings, the President and the Secretary of State readied for consideration by the President a first-hand report on a variety of subjects affecting Soviet-American relations.

"In addition, these meetings will enable Ambassador Thompson to return to Moscow with a clear understanding of the President's views on the matters discussed for his use as guidance in conversations with Soviet officials. He is

(Continued on Page Two)

Equalize Homeowner Payments New Formula on Tax For Education Urged

Hartford, Feb. 22 (AP)—A brand new state aid to education formula to equalize payments for education costs by home-owning taxpayers throughout Connecticut is being readied for consideration by the General Assembly's Education Committee it was learned today.

Author of the new formula based on the amount of tax dollars the average homeowner contributes to his local education budget is state Sen. Franklin G. Welles of Vernon.

The Republican lawmaker's theory being pursued with the sanction of State GOP Chairman Edwin H. May, according to Welles, stems from the personal belief that the present property tax system in Connecticut is out-of-date. He contends that the property tax being levied in the bedroom town trend started following World War II.

Welles believes that state aid grants should be distributed on the basis of the average homeowner's contribution to his local education budget, bringing about a more equal contribution to education costs by taxpayers throughout the state.

He cites the variance between the average taxpayer's contribution in Sprague of \$50.27 to the local education budget as against \$301.83 contributed by the average Darien homeowner toward education costs in that town. The spread

(Continued on Page Three)

Tshombe, UN Curb Friction

Leopoldville, The Congo, Feb. 22 (AP)—Premier Joseph Ileo today denounced the United Nations peace plan for The Congo, declaring an attempt to disarm the army will be "a declaration of war."

The announcement came as a surprise. Diplomatic sources had expected the plan might be acceptable to President Joseph Kasavubu, Ileo's boss.

"The Congolese people are ready to die to defend our sovereignty," Ileo told a news conference.

He said his government would never accept the proposals approved by the Security Council.

He particularly assailed the plans for reorganizing the Congolese military forces and for giving U.N. troops the right to use force to prevent civil war.

He warned that any loss of life would be the responsibility of the United Nations.

"If the U.N. uses force we will reply with force," Ileo added.

(Continued on Page Thirteen)

Bulletins from the AP Wires

15 EXECUTED
London, Feb. 22 (AP)—British diplomatic sources said today 15 political opponents of the Giza regime in the Congo have been executed in revenge for the slaying of Patrice Lumumba. They died before a firing squad Monday in Ostro camp, outside Stanleyville, these sources said. Stanleyville is headquarters of Antoine Gizenga, whose pro-Lumumba regime has been recognized by the Communist bloc and some other nations.

SPACE SHOT SHORT

Washington, Feb. 22 (AP)—The doubleheader satellite launched from Cape Canaveral, Fla., whirled around the Earth today but officials called it only "a partially successful" shot. It failed to achieve the nearly circular orbit planned for it, flying instead in a path coming as close as 104 miles to the earth and as far out as 617 miles. The target was 500 miles. And the two satellites carried upward by one rocket apparently did not even detach from the last stage of the booster. Scientists said they appear to be orbiting all together.

KENNEDY PLAYS GOLF

Washington, Feb. 22 (AP)—President Kennedy slipped away to play golf at the Chevy Chase Country Club in suburban Maryland today. Kennedy was gone for an hour and a half before there was any announcement as to where he was. This was the first time Kennedy had played golf since mid-January when he was in Palm Beach, Fla. Washington's snowy weather has been unsuitable for golf.

STATE GIRL KILLED

East Hampton, Feb. 22 (AP)—A 16-year-old East Hampton girl was injured fatally today when a car in which she was a passenger went out of control, State Police said, and struck a tree. The driver was reported in fair condition. She was Ann B. Cavanaugh, 11 West High St., the car was owned by Robert Salter, 11 (Middletown Ave.), also of East Hampton. Miss Cavanaugh died while being taken to Hillside Memorial Hospital in Hillside, N.Y. She was being treated for concussion and multiple bone injuries.

(Continued on Page Three)

2
2

2
2