





FINANCIAL NEWS

LOCAL STOCK MARKET
Of the Public Utility companies, Connecticut Traction common has been in the best demand with sales at 100. Sales of Hartford Electric Light common have been at 170 and 175, and the preferred stock at 157.

The feature of the local market during the past week has been the "Fire Insurance" stock. National Fire Insurance Co. has had a sharp advance with recent sales ranging at 8 per cent preferred have ranged from 55 to 58. Hartford Fire Ins. Co. is also showing a sharp advance with recent sales ranging at 8 per cent preferred have ranged from 55 to 58.

Of the Life and Indemnity stocks, the Life Insurance Co. of New York is in the best demand with sales at 100. Sales of Phoenix Fire Ins. Co. are also in the best demand with sales at 100. There is no change in the 7 per cent preferred of the Hartford Electric Light Co. at 100 and 101.

The Manufacturing stocks have been in the best demand with sales at 100. Sales of American Hardware Corp. are also in the best demand with sales at 100. There is no change in the 7 per cent preferred of the Hartford Electric Light Co. at 100 and 101.

Of the Bank stocks, the First National Bank is in the best demand with sales at 100. Sales of the Hartford Electric Light Co. are also in the best demand with sales at 100. There is no change in the 7 per cent preferred of the Hartford Electric Light Co. at 100 and 101.

Of the Trust stocks, the First National Trust is in the best demand with sales at 100. Sales of the Hartford Electric Light Co. are also in the best demand with sales at 100. There is no change in the 7 per cent preferred of the Hartford Electric Light Co. at 100 and 101.

Of the Insurance stocks, the Hartford Fire Ins. Co. is in the best demand with sales at 100. Sales of the Hartford Electric Light Co. are also in the best demand with sales at 100. There is no change in the 7 per cent preferred of the Hartford Electric Light Co. at 100 and 101.

Of the Utility stocks, the Connecticut Traction is in the best demand with sales at 100. Sales of the Hartford Electric Light Co. are also in the best demand with sales at 100. There is no change in the 7 per cent preferred of the Hartford Electric Light Co. at 100 and 101.

Of the Industrial stocks, the American Hardware Corp. is in the best demand with sales at 100. Sales of the Hartford Electric Light Co. are also in the best demand with sales at 100. There is no change in the 7 per cent preferred of the Hartford Electric Light Co. at 100 and 101.

Of the Real Estate stocks, the First National Bank is in the best demand with sales at 100. Sales of the Hartford Electric Light Co. are also in the best demand with sales at 100. There is no change in the 7 per cent preferred of the Hartford Electric Light Co. at 100 and 101.

Of the Foreign stocks, the Hartford Electric Light Co. is in the best demand with sales at 100. Sales of the Hartford Electric Light Co. are also in the best demand with sales at 100. There is no change in the 7 per cent preferred of the Hartford Electric Light Co. at 100 and 101.

Of the Government stocks, the Hartford Electric Light Co. is in the best demand with sales at 100. Sales of the Hartford Electric Light Co. are also in the best demand with sales at 100. There is no change in the 7 per cent preferred of the Hartford Electric Light Co. at 100 and 101.

Of the Bond stocks, the Hartford Electric Light Co. is in the best demand with sales at 100. Sales of the Hartford Electric Light Co. are also in the best demand with sales at 100. There is no change in the 7 per cent preferred of the Hartford Electric Light Co. at 100 and 101.

Of the Commodity stocks, the Hartford Electric Light Co. is in the best demand with sales at 100. Sales of the Hartford Electric Light Co. are also in the best demand with sales at 100. There is no change in the 7 per cent preferred of the Hartford Electric Light Co. at 100 and 101.

Of the Miscellaneous stocks, the Hartford Electric Light Co. is in the best demand with sales at 100. Sales of the Hartford Electric Light Co. are also in the best demand with sales at 100. There is no change in the 7 per cent preferred of the Hartford Electric Light Co. at 100 and 101.

Of the International stocks, the Hartford Electric Light Co. is in the best demand with sales at 100. Sales of the Hartford Electric Light Co. are also in the best demand with sales at 100. There is no change in the 7 per cent preferred of the Hartford Electric Light Co. at 100 and 101.

Of the Special stocks, the Hartford Electric Light Co. is in the best demand with sales at 100. Sales of the Hartford Electric Light Co. are also in the best demand with sales at 100. There is no change in the 7 per cent preferred of the Hartford Electric Light Co. at 100 and 101.

Of the Preferred stocks, the Hartford Electric Light Co. is in the best demand with sales at 100. Sales of the Hartford Electric Light Co. are also in the best demand with sales at 100. There is no change in the 7 per cent preferred of the Hartford Electric Light Co. at 100 and 101.

Of the Common stocks, the Hartford Electric Light Co. is in the best demand with sales at 100. Sales of the Hartford Electric Light Co. are also in the best demand with sales at 100. There is no change in the 7 per cent preferred of the Hartford Electric Light Co. at 100 and 101.

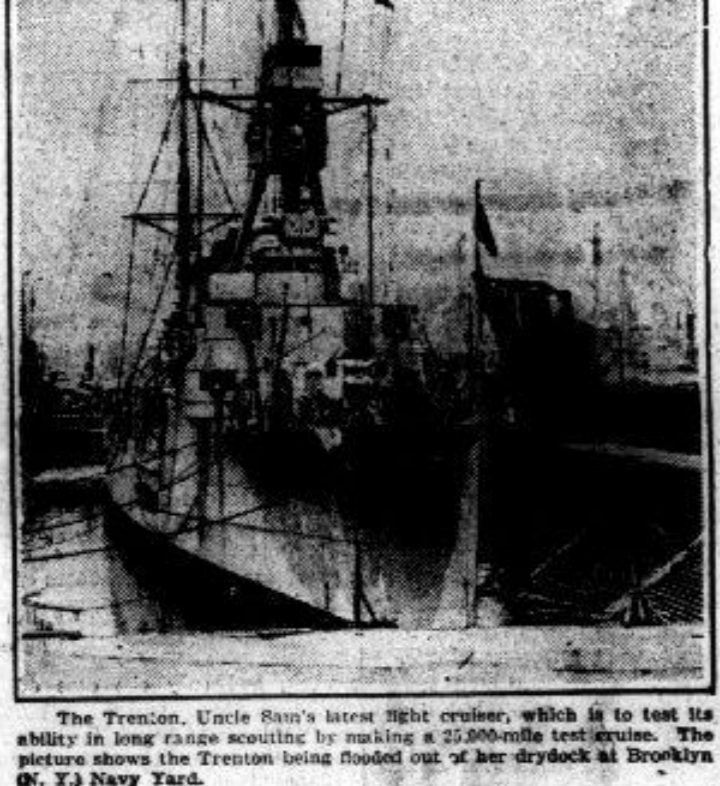
Of the Other stocks, the Hartford Electric Light Co. is in the best demand with sales at 100. Sales of the Hartford Electric Light Co. are also in the best demand with sales at 100. There is no change in the 7 per cent preferred of the Hartford Electric Light Co. at 100 and 101.

She Knows No Fear



Beating against a heavy tide, Betty Colbourne, 15, of Winstrop, Mass., received a medal for her heroic act.

Newest Cruiser on Test Trip



The Transcon, Uncle Sam's latest battle cruiser, which is to test its ability to lower anchor by making a 25,000-mile test cruise.

CLOSING QUOTATIONS

Table with columns for stock names, rates, and other financial data.

DASHIN DAN AT THE CIRCUS

Well I felt like going to a Circus, so I went to the circus and saw a lot of things. I saw a lot of funny things and I had a good time.

Concert Singers

Recenter Pleasing Program

(Continued From Page One)

lovely "Pastorale." Graped with this number was "Moment Musical" by Schubert, and "Country Garden" by Grieg. In the Granger number, a melody of themes is heard, ranging from the graceful waltz up to the Allegro movement of the most stately "Grand March" with at times an appealing theme of bells breaking into the movement in a delightful manner.

Mr. and Mrs. William S. Ellis (nee Miss Maria Way) are pleased to announce the marriage of their only son, William S. Ellis, Jr., to Miss Marie Way, daughter of Mr. and Mrs. C. Daniel Way, of Winstrop, Mass.

GILEAD

Mr. and Mrs. William S. Ellis (nee Miss Maria Way) are pleased to announce the marriage of their only son, William S. Ellis, Jr., to Miss Marie Way, daughter of Mr. and Mrs. C. Daniel Way, of Winstrop, Mass.

CHAIRS CANED

in the right way. Can fix your old Chair up to look like new. Give me a trial.

DAVID COLE, 99 Ridge St., Phone 1204. Evenings and Saturday Afternoon.

My Job Is to Save You Time, Money and Annoyance, by Prolonging the Life of Your Automobile Battery

Our Part: Test and fill your batteries regularly and without charge to you.

Your Part: To bring your car to us at least twice a month for a test and when necessary re-filling with distilled (not faucet) water.

By timely and reasonable repairs insure your longest possible life for your battery.

When your battery is worthless, sell you a new Willard, known the world over for high quality and low prices.

LOU CARROLL, Local Manager

Smallest FULLER STORAGE BATTERY CO.

The Biggest Battery Distributing Company in the world herewith announces the opening of a Branch in the town of Manchester, and the appointment of Mr. Lou Carroll, of East Hartford as manager of this branch.

43 Oak Street, Corner of Cottage Street, South Manchester

home of Willard Auto and Radio Batteries and Tuska Radio Sets; High Grade Loud Speakers and all High Class Radio Equipment.

"We Feature Willard Batteries, But We Service and Repair All Makes."

OPEN TONIGHT

Remember to be one of the many who are looking for a new Willard battery. It is the only one that will last you a long time.

Fuller Storage Battery Opens For Business

(Continued From Page One)

for an under-charged condition, excepting in extremely cold weather. It is a simple matter of adding water to the battery, and the battery will be in perfect condition. The battery is a very simple and easy to use, and it is a very reliable and durable.

Mr. and Mrs. John L. Way of Hartford, Conn., are pleased to announce the marriage of their only son, John L. Way, Jr., to Miss Marie Way, daughter of Mr. and Mrs. C. Daniel Way, of Winstrop, Mass.

CHAIRS CANED

in the right way. Can fix your old Chair up to look like new. Give me a trial.

DAVID COLE, 99 Ridge St., Phone 1204. Evenings and Saturday Afternoon.

My Job Is to Save You Time, Money and Annoyance, by Prolonging the Life of Your Automobile Battery

Our Part: Test and fill your batteries regularly and without charge to you.

Your Part: To bring your car to us at least twice a month for a test and when necessary re-filling with distilled (not faucet) water.

By timely and reasonable repairs insure your longest possible life for your battery.

When your battery is worthless, sell you a new Willard, known the world over for high quality and low prices.

LOU CARROLL, Local Manager

Smallest FULLER STORAGE BATTERY CO.

The Biggest Battery Distributing Company in the world herewith announces the opening of a Branch in the town of Manchester, and the appointment of Mr. Lou Carroll, of East Hartford as manager of this branch.

43 Oak Street, Corner of Cottage Street, South Manchester

home of Willard Auto and Radio Batteries and Tuska Radio Sets; High Grade Loud Speakers and all High Class Radio Equipment.

"We Feature Willard Batteries, But We Service and Repair All Makes."

OPEN TONIGHT

Remember to be one of the many who are looking for a new Willard battery. It is the only one that will last you a long time.

Chirpings for Milady by Cricket

Success depends on how hard you work for it.

Lock comes to those who have pluck enough to go out and get it. The Tavern on East Center street, is now open for business and is serving ice cream, cake, and hot coffee, and is a very popular place for a social gathering.

PARIS RAGE

Every man some helping hand. Journey's end is at the turning. Unaware it call may come. No one knows which light nor burning. Enters into God's Kingdom. June 3, E. Thibaut.

THE HALF-TIME WIFE BY VIOLET DARE

WHO'S WHO AND WHAT'S HAPPENING. DUNCAN JAMES, a young army officer, was in Paris when he met Violet Dare. She was a young girl who had just come to Paris from America.

THE BAXTER BEASLEYS

THE BAXTER BEASLEYS. A story of a young man who goes to Paris and meets a young girl who has just come to Paris from America.

MARKING OFF MISS PHILIP

MISS PHILIP started in a very quiet way. She was a young girl who had just come to Paris from America. She was a very beautiful girl and she was very popular.

THE HALF-TIME WIFE BY VIOLET DARE

WHO'S WHO AND WHAT'S HAPPENING. DUNCAN JAMES, a young army officer, was in Paris when he met Violet Dare. She was a young girl who had just come to Paris from America.

THE BAXTER BEASLEYS

THE BAXTER BEASLEYS. A story of a young man who goes to Paris and meets a young girl who has just come to Paris from America.

MARKING OFF MISS PHILIP

MISS PHILIP started in a very quiet way. She was a young girl who had just come to Paris from America. She was a very beautiful girl and she was very popular.

THE HALF-TIME WIFE BY VIOLET DARE

WHO'S WHO AND WHAT'S HAPPENING. DUNCAN JAMES, a young army officer, was in Paris when he met Violet Dare. She was a young girl who had just come to Paris from America.

THE BAXTER BEASLEYS

THE BAXTER BEASLEYS. A story of a young man who goes to Paris and meets a young girl who has just come to Paris from America.

MARKING OFF MISS PHILIP

MISS PHILIP started in a very quiet way. She was a young girl who had just come to Paris from America. She was a very beautiful girl and she was very popular.

THE HALF-TIME WIFE BY VIOLET DARE

WHO'S WHO AND WHAT'S HAPPENING. DUNCAN JAMES, a young army officer, was in Paris when he met Violet Dare. She was a young girl who had just come to Paris from America.

THE BAXTER BEASLEYS

THE BAXTER BEASLEYS. A story of a young man who goes to Paris and meets a young girl who has just come to Paris from America.

MARKING OFF MISS PHILIP

MISS PHILIP started in a very quiet way. She was a young girl who had just come to Paris from America. She was a very beautiful girl and she was very popular.

THE HALF-TIME WIFE BY VIOLET DARE

WHO'S WHO AND WHAT'S HAPPENING. DUNCAN JAMES, a young army officer, was in Paris when he met Violet Dare. She was a young girl who had just come to Paris from America.

THE BAXTER BEASLEYS

THE BAXTER BEASLEYS. A story of a young man who goes to Paris and meets a young girl who has just come to Paris from America.

MARKING OFF MISS PHILIP

MISS PHILIP started in a very quiet way. She was a young girl who had just come to Paris from America. She was a very beautiful girl and she was very popular.

Chirpings for Milady by Cricket

Success depends on how hard you work for it.

Lock comes to those who have pluck enough to go out and get it. The Tavern on East Center street, is now open for business and is serving ice cream, cake, and hot coffee, and is a very popular place for a social gathering.

PARIS RAGE

Every man some helping hand. Journey's end is at the turning. Unaware it call may come. No one knows which light nor burning. Enters into God's Kingdom. June 3, E. Thibaut.

THE HALF-TIME WIFE BY VIOLET DARE

WHO'S WHO AND WHAT'S HAPPENING. DUNCAN JAMES, a young army officer, was in Paris when he met Violet Dare. She was a young girl who had just come to Paris from America.

THE BAXTER BEASLEYS

THE BAXTER BEASLEYS. A story of a young man who goes to Paris and meets a young girl who has just come to Paris from America.

MARKING OFF MISS PHILIP

MISS PHILIP started in a very quiet way. She was a young girl who had just come to Paris from America. She was a very beautiful girl and she was very popular.

THE HALF-TIME WIFE BY VIOLET DARE

WHO'S WHO AND WHAT'S HAPPENING. DUNCAN JAMES, a young army officer, was in Paris when he met Violet Dare. She was a young girl who had just come to Paris from America.

THE BAXTER BEASLEYS

THE BAXTER BEASLEYS. A story of a young man who goes to Paris and meets a young girl who has just come to Paris from America.

MARKING OFF MISS PHILIP

MISS PHILIP started in a very quiet way. She was a young girl who had just come to Paris from America. She was a very beautiful girl and she was very popular.

THE HALF-TIME WIFE BY VIOLET DARE

WHO'S WHO AND WHAT'S HAPPENING. DUNCAN JAMES, a young army officer, was in Paris when he met Violet Dare. She was a young girl who had just come to Paris from America.

THE BAXTER BEASLEYS

THE BAXTER BEASLEYS. A story of a young man who goes to Paris and meets a young girl who has just come to Paris from America.

MARKING OFF MISS PHILIP

MISS PHILIP started in a very quiet way. She was a young girl who had just come to Paris from America. She was a very beautiful girl and she was very popular.

THE HALF-TIME WIFE BY VIOLET DARE

WHO'S WHO AND WHAT'S HAPPENING. DUNCAN JAMES, a young army officer, was in Paris when he met Violet Dare. She was a young girl who had just come to Paris from America.

THE BAXTER BEASLEYS

THE BAXTER BEASLEYS. A story of a young man who goes to Paris and meets a young girl who has just come to Paris from America.

MARKING OFF MISS PHILIP

MISS PHILIP started in a very quiet way. She was a young girl who had just come to Paris from America. She was a very beautiful girl and she was very popular.

THE HALF-TIME WIFE BY VIOLET DARE

WHO'S WHO AND WHAT'S HAPPENING. DUNCAN JAMES, a young army officer, was in Paris when he met Violet Dare. She was a young girl who had just come to Paris from America.

THE BAXTER BEASLEYS

THE BAXTER BEASLEYS. A story of a young man who goes to Paris and meets a young girl who has just come to Paris from America.

MARKING OFF MISS PHILIP

MISS PHILIP started in a very quiet way. She was a young girl who had just come to Paris from America. She was a very beautiful girl and she was very popular.

FEATURE PAGE

FAVORITE FICTION FOR OLD AND YOUNG

THE BAXTER BEASLEYS

THE BAXTER BEASLEYS. A story of a young man who goes to Paris and meets a young girl who has just come to Paris from America.

MARKING OFF MISS PHILIP

MISS PHILIP started in a very quiet way. She was a young girl who had just come to Paris from America. She was a very beautiful girl and she was very popular.

THE HALF-TIME WIFE BY VIOLET DARE

WHO'S WHO AND WHAT'S HAPPENING. DUNCAN JAMES, a young army officer, was in Paris when he met Violet Dare. She was a young girl who had just come to Paris from America.

PARIS RAGE

Every man some helping hand. Journey's end is at the turning. Unaware it call may come. No one knows which light nor burning. Enters into God's Kingdom. June 3, E. Thibaut.

THE HALF-TIME WIFE BY VIOLET DARE

WHO'S WHO AND WHAT'S HAPPENING. DUNCAN JAMES, a young army officer, was in Paris when he met Violet Dare. She was a young girl who had just come to Paris from America.

THE BAXTER BEASLEYS

THE BAXTER BEASLEYS. A story of a young man who goes to Paris and meets a young girl who has just come to Paris from America.

MARKING OFF MISS PHILIP

MISS PHILIP started in a very quiet way. She was a young girl who had just come to Paris from America. She was a very beautiful girl and she was very popular.

THE HALF-TIME WIFE BY VIOLET DARE

WHO'S WHO AND WHAT'S HAPPENING. DUNCAN JAMES, a young army officer, was in Paris when he met Violet Dare. She was a young girl who had just come to Paris from America.

THE BAXTER BEASLEYS

THE BAXTER BEASLEYS. A story of a young man who goes to Paris and meets a young girl who has just come to Paris from America.

MARKING OFF MISS PHILIP

MISS PHILIP started in a very quiet way. She was a young girl who had just come to Paris from America. She was a very beautiful girl and she was very popular.

THE HALF-TIME WIFE BY VIOLET DARE

WHO'S WHO AND WHAT'S HAPPENING. DUNCAN JAMES, a young army officer, was in Paris when he met Violet Dare. She was a young girl who had just come to Paris from America.

THE BAXTER BEASLEYS

THE BAXTER BEASLEYS. A story of a young man who goes to Paris and meets a young girl who has just come to Paris from America.

MARKING OFF MISS PHILIP

MISS PHILIP started in a very quiet way. She was a young girl who had just come to Paris from America. She was a very beautiful girl and she was very popular.

THE HALF-TIME WIFE BY VIOLET DARE

WHO'S WHO AND WHAT'S HAPPENING. DUNCAN JAMES, a young army officer, was in Paris when he met Violet Dare. She was a young girl who had just come to Paris from America.

THE BAXTER BEASLEYS

THE BAXTER BEASLEYS. A story of a young man who goes to Paris and meets a young girl who has just come to Paris from America.

MARKING OFF MISS PHILIP

MISS PHILIP started in a very quiet way. She was a young girl who had just come to Paris from America. She was a very beautiful girl and she was very popular.

THE HALF-TIME WIFE BY VIOLET DARE

WHO'S WHO AND WHAT'S HAPPENING. DUNCAN JAMES, a young army officer, was in Paris when he met Violet Dare. She was a young girl who had just come to Paris from America.







The News Specializes On Local Sports

Daily News Sporting Page

Bristol and Manchester Play This Week

WARREN TORPS TWILIGHT TILTS TABBLED TONIGHT

WARREN TORPS MEET RED MEN IN LEAGUE CONTEST AT WEST SIDE PLAYGROUNDS

Warriors to Make Big Attempt to Break Long Winning Streak of North End Team—Daoust and McLaughlin Probable Rivals For Mound Duty.

Interest in making sky-high on the coming game this evening between the league leading Shannocks and the Red Men which is tabbed for the West Side playgrounds at 6 o'clock promptly.

Cincinnati Reds have won eleven games by one run. Athletics copped one game by twelve runs and then didn't win again for a week.

St. Louis clubs are like bargain day honesty—they run in streaks.

Goal Sains wins nomination a year's leading exponent of his old run play. He hit up father-in-law for \$100,000, and then ran away.

If G. Herman Ruth knocks many more homers, other circuit cutters will have to put on roller skates to catch him.

Many a foreign boxer gets swelled head from advance press notices, and then gets swollings elsewhere after the bout is over.

In Sweden an elk has been broken to harness and used as a race horse, but they have to use a bullfighter for a jockey.

Football players may wear rubber suits, it is rumored. If fullback hits him hard enough, he will bounce back to his own goal.

And with expert vulcanizer on sidelines, injured players can be repaired instantly instead of being carried off the field on a stretcher.

SCHOOL DAYS

By DWIG

THEY'RE BACK WHEN YOU BRISTOL... THEY'RE BACK WHEN YOU BRISTOL...

THE ECONOMISTS

THE ECONOMISTS

THE ECONOMISTS

THE ECONOMISTS

THE ECONOMISTS

THE ECONOMISTS

THE ECONOMISTS

THE ECONOMISTS

THE ECONOMISTS

PIRATES FACE J. B. WILLIAMS IN RETURN GAME AT CHARTER OAK ST., CONNERY ON MOUND

Crack Glastonbury Hurler to Attempt to First Colors of Buccaneers Who Won First Game 3-0—Waddell or Seelert On Hill For Locals.

Manchester fans will get their first glimpse of "Burr" Williams, Glastonbury's best pitcher this evening when the local Pirates tackle the B. Williams team at Charter Oak Street field at 6:30 o'clock.

Connelly is first string pitcher for the Addison town team and is considered to be one of the best right hand pitchers in amateur circles.

With the sting of their own defeat from last week, the Pirates will take the field tonight determined to "sing into it" and break an approximately losing streak.

It was announced this morning that the Pirates will have a 3 to 0 score.

With the sting of their own defeat from last week, the Pirates will take the field tonight determined to "sing into it" and break an approximately losing streak.

It was announced this morning that the Pirates will have a 3 to 0 score.

With the sting of their own defeat from last week, the Pirates will take the field tonight determined to "sing into it" and break an approximately losing streak.

It was announced this morning that the Pirates will have a 3 to 0 score.

With the sting of their own defeat from last week, the Pirates will take the field tonight determined to "sing into it" and break an approximately losing streak.

It was announced this morning that the Pirates will have a 3 to 0 score.

LOCAL BOYS PLACE IN UNITED STATES JUNIOR OLYMPIC MEET HELD MAY 3RD

Wifford Hills and Nelson Tyler, Only Youths From Connecticut to Make Grade—Majority of Winners Hail From Western State.

It was announced this morning by Director Walter Olson of the Recreation Center that two local boys had placed in the country wide Junior Olympic meet which was held all over the United States on Saturday afternoon, May 3rd.

Wifford Hills, of the Eastern district, was the only local boy to place in the meet. He won the 100 yard dash in the 10 to 12 age class.

Nelson Tyler, of the Western district, was the only local boy to place in the meet. He won the 100 yard dash in the 13 to 15 age class.

The meet was held at the University of California at Berkeley, California. It was the largest meet of its kind ever held in the United States.

The winners of the meet were: 100 yard dash, Wifford Hills; 200 yard dash, Wifford Hills; 400 yard dash, Wifford Hills; 800 yard dash, Wifford Hills; 1600 yard dash, Wifford Hills; 3200 yard dash, Wifford Hills; 6400 yard dash, Wifford Hills; 12800 yard dash, Wifford Hills; 25600 yard dash, Wifford Hills; 51200 yard dash, Wifford Hills; 102400 yard dash, Wifford Hills; 204800 yard dash, Wifford Hills; 409600 yard dash, Wifford Hills; 819200 yard dash, Wifford Hills; 1638400 yard dash, Wifford Hills; 3276800 yard dash, Wifford Hills; 6553600 yard dash, Wifford Hills; 13107200 yard dash, Wifford Hills; 26214400 yard dash, Wifford Hills; 52428800 yard dash, Wifford Hills; 104857600 yard dash, Wifford Hills; 209715200 yard dash, Wifford Hills; 419430400 yard dash, Wifford Hills; 838860800 yard dash, Wifford Hills; 1677721600 yard dash, Wifford Hills; 3355443200 yard dash, Wifford Hills; 6710886400 yard dash, Wifford Hills; 13421772800 yard dash, Wifford Hills; 26843545600 yard dash, Wifford Hills; 53687091200 yard dash, Wifford Hills; 107374182400 yard dash, Wifford Hills; 214748364800 yard dash, Wifford Hills; 429496729600 yard dash, Wifford Hills; 858993459200 yard dash, Wifford Hills; 1717986918400 yard dash, Wifford Hills; 3435973836800 yard dash, Wifford Hills; 6871947673600 yard dash, Wifford Hills; 13743895347200 yard dash, Wifford Hills; 27487790694400 yard dash, Wifford Hills; 54975581388800 yard dash, Wifford Hills; 109951162777600 yard dash, Wifford Hills; 219902325555200 yard dash, Wifford Hills; 439804651110400 yard dash, Wifford Hills; 879609302220800 yard dash, Wifford Hills; 1759218604441600 yard dash, Wifford Hills; 3518437208883200 yard dash, Wifford Hills; 7036874417766400 yard dash, Wifford Hills; 14073748835532800 yard dash, Wifford Hills; 28147497671065600 yard dash, Wifford Hills; 56294995342131200 yard dash, Wifford Hills; 112589990684262400 yard dash, Wifford Hills; 225179981368524800 yard dash, Wifford Hills; 450359962737049600 yard dash, Wifford Hills; 900719925474099200 yard dash, Wifford Hills; 1801439850948198400 yard dash, Wifford Hills; 3602879701896396800 yard dash, Wifford Hills; 7205759403792793600 yard dash, Wifford Hills; 14411518807585587200 yard dash, Wifford Hills; 28823037615171174400 yard dash, Wifford Hills; 57646075230342348800 yard dash, Wifford Hills; 115292150460684697600 yard dash, Wifford Hills; 230584300921369395200 yard dash, Wifford Hills; 461168601842738790400 yard dash, Wifford Hills; 922337203685477580800 yard dash, Wifford Hills; 1844674407370955161600 yard dash, Wifford Hills; 3689348814741910323200 yard dash, Wifford Hills; 7378697629483820646400 yard dash, Wifford Hills; 14757395258967641292800 yard dash, Wifford Hills; 29514790517935282585600 yard dash, Wifford Hills; 59029581035870565171200 yard dash, Wifford Hills; 118059162071741130342400 yard dash, Wifford Hills; 236118324143482260684800 yard dash, Wifford Hills; 472236648286964521369600 yard dash, Wifford Hills; 944473296573929042739200 yard dash, Wifford Hills; 1888946593147858085478400 yard dash, Wifford Hills; 3777893186295716170956800 yard dash, Wifford Hills; 7555786372591432341913600 yard dash, Wifford Hills; 15111572745182864683827200 yard dash, Wifford Hills; 30223145491365729367654400 yard dash, Wifford Hills; 60446290982731458735308800 yard dash, Wifford Hills; 120892581965462917470617600 yard dash, Wifford Hills; 241785163930925834941235200 yard dash, Wifford Hills; 483570327861851669882470400 yard dash, Wifford Hills; 967140655723703339764940800 yard dash, Wifford Hills; 1934281311447406679529881600 yard dash, Wifford Hills; 3868562622894813359059763200 yard dash, Wifford Hills; 7737125245789626718119526400 yard dash, Wifford Hills; 15474250491579253436239052800 yard dash, Wifford Hills; 30948500983158506872478105600 yard dash, Wifford Hills; 61897001966317013744956211200 yard dash, Wifford Hills; 123794003932634027489912422400 yard dash, Wifford Hills; 247588007865268054979824844800 yard dash, Wifford Hills; 49517601573053610995964889600 yard dash, Wifford Hills; 99035203146107221991937779200 yard dash, Wifford Hills; 198070406292214443983875558400 yard dash, Wifford Hills; 396140812584428887967751116800 yard dash, Wifford Hills; 792281625168857775935502233600 yard dash, Wifford Hills; 1584563250337715551871004467200 yard dash, Wifford Hills; 3169126500675431103742088934400 yard dash, Wifford Hills; 6338253001350862207484177868800 yard dash, Wifford Hills; 12676506002701724414968355737600 yard dash, Wifford Hills; 25353012005403448829936711475200 yard dash, Wifford Hills; 50706024010806897659873422950400 yard dash, Wifford Hills; 101412048021613795319746845900800 yard dash, Wifford Hills; 20282409604322759063949369181600 yard dash, Wifford Hills; 40564819208645518127898738363200 yard dash, Wifford Hills; 81129638417291036255797466726400 yard dash, Wifford Hills; 162259276834582072511594933452800 yard dash, Wifford Hills; 324518553669164145023189866905600 yard dash, Wifford Hills; 649037107338328290046379733811200 yard dash, Wifford Hills; 1298074214676576580092759467622400 yard dash, Wifford Hills; 2596148429353153160185519355244800 yard dash, Wifford Hills; 519229685870630632037103871049600 yard dash, Wifford Hills; 1038459371741261264074207622099200 yard dash, Wifford Hills; 2076918743482522528148414454118400 yard dash, Wifford Hills; 4153837486965045056296828908236800 yard dash, Wifford Hills; 8307674973930090112593657816473600 yard dash, Wifford Hills; 16615349947860180225987315528947200 yard dash, Wifford Hills; 3323069989572036045197563105779200 yard dash, Wifford Hills; 66461399791440720903951261155558400 yard dash, Wifford Hills; 1329227995828814380079025223111116800 yard dash, Wifford Hills; 265845599165762876015804544622233600 yard dash, Wifford Hills; 531691198331525752031660891244470400 yard dash, Wifford Hills; 1063382396663051504063321782488940800 yard dash, Wifford Hills; 212676479332610300812643564977788800 yard dash, Wifford Hills; 4253529586652206016252871299555777600 yard dash, Wifford Hills; 8507059173304412032505742599111555200 yard dash, Wifford Hills; 170141183466088240650114851822222400 yard dash, Wifford Hills; 340282366932176481300229703644444800 yard dash, Wifford Hills; 68056473386435296260045940728889600 yard dash, Wifford Hills; 136112946772870592520091891457779200 yard dash, Wifford Hills; 272225893545741185040183782915558400 yard dash, Wifford Hills; 5444517870914823700803675658311116800 yard dash, Wifford Hills; 1088903574184764740160735131662233600 yard dash, Wifford Hills; 2177807148369529480321470263324470400 yard dash, Wifford Hills; 43556142967390589606429405266488940800 yard dash, Wifford Hills; 87112285934781179212858810532977788800 yard dash, Wifford Hills; 17422451986956235825711766585955777600 yard dash, Wifford Hills; 3484490397391247165142733117111555200 yard dash, Wifford Hills; 69689807947824943302854662222222400 yard dash, Wifford Hills; 13937961589564988605711322444444800 yard dash, Wifford Hills; 278759231791299772114254888889600 yard dash, Wifford Hills; 557518463582599544228509777779200 yard dash, Wifford Hills; 11150369271651990884571155555555200 yard dash, Wifford Hills; 22300738543303981769142702222222400 yard dash, Wifford Hills; 446014770866079634182854444444800 yard dash, Wifford Hills; 89202954173215926836570888889600 yard dash, Wifford Hills; 178405908346431853673137777779200 yard dash, Wifford Hills; 356811816692863707346275555555200 yard dash, Wifford Hills; 713623633385727414692511111111555200 yard dash, Wifford Hills; 14272472677714548292322222222400 yard dash, Wifford Hills; 2854494535542909658464444444800 yard dash, Wifford Hills; 5708989071085819316928888889600 yard dash, Wifford Hills; 1141797814217163863385777779200 yard dash, Wifford Hills; 22835956284343277267715555555200 yard dash, Wifford Hills; 45671912568686554535427022222400 yard dash, Wifford Hills; 913438251373731090708444444800 yard dash, Wifford Hills; 1826876502747462181416888889600 yard dash, Wifford Hills; 365375300549492436283377779200 yard dash, Wifford Hills; 730750601098984872566755555200 yard dash, Wifford Hills; 14615012021979697451335111111555200 yard dash, Wifford Hills; 2923002404355939490267022222400 yard dash, Wifford Hills; 5846004808711878980534044444800 yard dash, Wifford Hills; 1169200961743775796106888889600 yard dash, Wifford Hills; 233840192348755159221377779200 yard dash, Wifford Hills; 467680384697510318442755555200 yard dash, Wifford Hills; 9353607693950206368845111111555200 yard dash, Wifford Hills; 1870721538790041273768222222400 yard dash, Wifford Hills; 374144307758008254753644444800 yard dash, Wifford Hills; 7482886155160164945072888889600 yard dash, Wifford Hills; 149657723103203298901577779200 yard dash, Wifford Hills; 299315446206406597803155555200 yard dash, Wifford Hills; 5986308924128131956063111111555200 yard dash, Wifford Hills; 119726178482562639121222222400 yard dash, Wifford Hills; 239452356965125278242444444800 yard dash, Wifford Hills; 478904713930250556484888889600 yard dash, Wifford Hills; 95780942786050111296977779200 yard dash, Wifford Hills; 191561855572100225193955555200 yard dash, Wifford Hills; 3831237111442004479879111111555200 yard dash, Wifford Hills; 766247422288400895975822222400 yard dash, Wifford Hills; 1532494845776801791951644444800 yard dash, Wifford Hills; 30649896915536035839032888889600 yard dash, Wifford Hills; 6129979383107207167806577779200 yard dash, Wifford Hills; 12259958766214414337613155555200 yard dash, Wifford Hills; 245199175324288286752263111111555200 yard dash, Wifford Hills; 49039835064857657350452622222400 yard dash, Wifford Hills; 98079670129715314700905244444800 yard dash, Wifford Hills; 196159340259430628401804888889600 yard dash, Wifford Hills; 39231868051886125380360977779200 yard dash, Wifford Hills; 78463736103772250760721955555200 yard dash, Wifford Hills; 156927472207544501521439111111555200 yard dash, Wifford Hills; 31385494441508900304287822222400 yard dash, Wifford Hills; 62770988883017800608555644444800 yard dash, Wifford Hills; 12554197776603560121111111555200 yard dash, Wifford Hills; 25108395553207120242222222400 yard dash, Wifford Hills; 502167911064142404444444800 yard dash, Wifford Hills; 1004335822128284808888889600 yard dash, Wifford Hills; 200867164425656961777779200 yard dash, Wifford Hills; 40173432885131392355555200 yard dash, Wifford Hills; 803468657702627847111111555200 yard dash, Wifford Hills; 1606937315405255694222222400 yard dash, Wifford Hills; 3213874630810511388444444800 yard dash, Wifford Hills; 64277492616210227768888889600 yard dash, Wifford Hills; 1285549852324204555377779200 yard dash, Wifford Hills; 2571099704648409110755555200 yard dash, Wifford Hills; 5142199409296818215111111555200 yard dash, Wifford Hills; 10284398185936636430222222400 yard dash, Wifford Hills; 20568796371873272860444444800 yard dash, Wifford Hills; 41137592743746545720888889600 yard dash, Wifford Hills; 8227518548749309144177779200 yard dash, Wifford Hills; 1645503709749801888355555200 yard dash, Wifford Hills; 32910074194996037767111111555200 yard dash, Wifford Hills; 65820148389992075534222222400 yard dash, Wifford Hills; 131640296799984151068444444800 yard dash, Wifford Hills; 2632805935999683021368888889600 yard dash, Wifford Hills; 52656118719993660427377779200 yard dash, Wifford Hills; 1053122374398733208455555200 yard dash, Wifford Hills; 21062447487974664169111111555200 yard dash, Wifford Hills; 42124894975949328328222222400 yard dash, Wifford Hills; 84249789951898656656444444800 yard dash, Wifford Hills; 1684995799037973133128888889600 yard dash, Wifford Hills; 33699915980759462662577779200 yard dash, Wifford Hills; 67399831961518925325155555200 yard dash, Wifford Hills; 1347996632230378506503111111555200 yard dash, Wifford Hills; 2695993264460757013006222222400 yard dash, Wifford Hills; 539198652892151402601244444800 yard dash, Wifford Hills; 10783973057843028052024888889600 yard dash, Wifford Hills; 2156794611568605610404977779200 yard dash, Wifford Hills; 4313589223137211220809955555200 yard dash, Wifford Hills; 86271784462744224416199111111555200 yard dash, Wifford Hills; 17254356912548844832239822222400 yard dash, Wifford Hills; 34508713825097689664479644444800 yard dash, Wifford Hills; 690174276511953793289592888889600 yard dash, Wifford Hills; 1380348553023907466579177779200 yard dash, Wifford Hills; 276069710604781493159355555200 yard dash, Wifford Hills; 5521394212095629863187111111555200 yard dash, Wifford Hills; 11042788424191259726354222222400 yard dash, Wifford Hills; 2208557684838251945270844444800 yard dash, Wifford Hills; 441711536967650389054168888889600 yard dash, Wifford Hills; 8834230739353007781083377779200 yard dash, Wifford Hills; 17668461478706015562166755555200 yard dash, Wifford Hills; 353369229574120311243335111111555200 yard dash, Wifford Hills; 70673845914824062248667022222400 yard dash, Wifford Hills; 1413476918364801249733444444800 yard dash, Wifford Hills; 2826953836729602499466888889600 yard dash, Wifford Hills; 565390767345920499893377779200 yard dash, Wifford Hills; 1130781534691840999786755555200 yard dash, Wifford Hills; 22615630693836819995735111111555200 yard dash, Wifford Hills; 4523126138767363999146222222400 yard dash, Wifford Hills; 9046252277534727998292444444800 yard dash, Wifford Hills; 180925055550694559965848888889600 yard dash, Wifford Hills; 36185011110138911993177779200 yard dash, Wifford Hills; 72370022220277823986355555200 yard dash, Wifford Hills; 144740044440555647773111111555200 yard dash, Wifford Hills; 2894800888811112954554222222400 yard dash, Wifford Hills; 5789601777622225909108444444800 yard dash, Wifford Hills; 11579203555244458182177779200 yard dash, Wifford Hills; 23158407110488436335355555200 yard dash, Wifford Hills; 4631681422097687267107111111555200 yard dash, Wifford Hills; 9263362844195374534214222222400 yard dash, Wifford Hills; 18526725688390749068428444444800 yard dash, Wifford Hills; 370534513767814981368568888889600 yard dash, Wifford Hills; 7410690275356299637377779200 yard dash, Wifford Hills; 1482138055071259874755555200 yard dash, Wifford Hills; 2964276110142597515111111555200 yard dash, Wifford Hills; 5928552220285195030222222400 yard dash, Wifford Hills; 11857104440570300604444444800 yard dash, Wifford Hills; 237142088811406012088888889600 yard dash, Wifford Hills; 47428417762121204177779200 yard dash, Wifford Hills; 94856835524242408355555200 yard dash, Wifford Hills; 189713670484484817111111555200 yard dash, Wifford Hills; 3794273409689696342222222400 yard dash, Wifford Hills; 7588546819379392684444444800 yard dash, Wifford Hills; 151770937387587853688888889600 yard dash, Wifford Hills; 303541874775175707377779200 yard dash, Wifford Hills; 60708374955035141475555520



THE OLD HOME TOWN—BY STANLEY

Will make an address, having for his topic "Enforcing Our Laws."

LOCAL BOY IN ESSA YCONTEST

Patent, "Creative Chemistry," "Discovery, the Spirit and Service of Science" and "The Future of Science."

EVERETT TRUE—BY CONDO

AND, WILL YOU JUST LOOK AT HIS EVERETT TRUE? THAT'S THE ONE WHO DOESN'T ADVERTISE IN THE ONE WHO DOESN'T SAY IN BUSINESS LONG.

Public Utilities Commission Grants Petition For Railroad Siding

Orford Soap Company's Application For Spur Track Is Unopposed and Permission is Granted to Proceed With Work.

Heiress to Oil Millions

Mrs. Rachel J. Fulton, widow of the late Robert Fulton, passed away Tuesday afternoon at the Manchester Memorial Hospital after a lingering illness.

Funerals

The funeral of Harry Sanderson, who died yesterday morning after a two years' illness with complications of disease, will be held tomorrow afternoon at 2 o'clock.

Waterbury is Celebrating 250th Anniversary During Present Week

During the present week Waterbury is celebrating the 250th anniversary of the settlement of Mattabesett, which developed into the present city of Waterbury.

Welles Sells U. S. Policy

By Bob Dumas, Townsman, Honduras, June 4.—Summer Welles has an interesting job. He is Uncle Sam's traveling salesman-in-line, the policy of the United States toward those countries lying between North and South America.

WATKINS' BROTHERS, INC.

NOT ONLY BETTER BUT CHEAPER AT WATKINS BROTHERS. The Jubilee Sale of Living Room Furniture.

NEWSPY NOTES

All vehicle lamps must be lighted at night that 7:30 p. m. The Connecticut Business College yesterday moved into the rooms in the Old Fellows building.

Graduation and Bridesmaid Frocks

Styles, quality and shades to satisfy the pride and preference of the Graduate and Bridesmaid while the prices are reasonable enough to satisfy the parents who pay for them.

THE MANCHESTER TRUST CO.

A service that is considerate and helpful. Personal interest is a helpful feature of the service we offer to depositors.

OBITUARY

Mrs. Rachel J. Fulton, widow of the late Robert Fulton, passed away Tuesday afternoon at the Manchester Memorial Hospital after a lingering illness.

OBITUARY

Mr. and Mrs. John Walworth of Southwick, Mass., spent the week and with Mrs. Henry Blackburn of Pine street.

RUBINOW'S

GARMENT FASHION CENTER. Styles, quality and shades to satisfy the pride and preference of the Graduate and Bridesmaid.

THE JUBILEE SALE OF LIVING ROOM FURNITURE

No home has ever had too many tables for the living room. Never before has there been so many different attractive and useful tables available.

WATKINS' BROTHERS, INC.

NOT ONLY BETTER BUT CHEAPER AT WATKINS BROTHERS. The Jubilee Sale of Living Room Furniture.

OBITUARY

Mr. and Mrs. John Walworth of Southwick, Mass., spent the week and with Mrs. Henry Blackburn of Pine street.

OBITUARY

Mr. and Mrs. John Walworth of Southwick, Mass., spent the week and with Mrs. Henry Blackburn of Pine street.

OBITUARY

Mr. and Mrs. John Walworth of Southwick, Mass., spent the week and with Mrs. Henry Blackburn of Pine street.

OBITUARY

Mr. and Mrs. John Walworth of Southwick, Mass., spent the week and with Mrs. Henry Blackburn of Pine street.

OBITUARY

Mr. and Mrs. John Walworth of Southwick, Mass., spent the week and with Mrs. Henry Blackburn of Pine street.

OBITUARY

Mr. and Mrs. John Walworth of Southwick, Mass., spent the week and with Mrs. Henry Blackburn of Pine street.

OBITUARY

Mr. and Mrs. John Walworth of Southwick, Mass., spent the week and with Mrs. Henry Blackburn of Pine street.

OBITUARY

Mr. and Mrs. John Walworth of Southwick, Mass., spent the week and with Mrs. Henry Blackburn of Pine street.

OBITUARY

Mr. and Mrs. John Walworth of Southwick, Mass., spent the week and with Mrs. Henry Blackburn of Pine street.

OBITUARY

Mr. and Mrs. John Walworth of Southwick, Mass., spent the week and with Mrs. Henry Blackburn of Pine street.

OBITUARY

Mr. and Mrs. John Walworth of Southwick, Mass., spent the week and with Mrs. Henry Blackburn of Pine street.

OBITUARY

Mr. and Mrs. John Walworth of Southwick, Mass., spent the week and with Mrs. Henry Blackburn of Pine street.

OBITUARY

Mr. and Mrs. John Walworth of Southwick, Mass., spent the week and with Mrs. Henry Blackburn of Pine street.

OBITUARY

Mr. and Mrs. John Walworth of Southwick, Mass., spent the week and with Mrs. Henry Blackburn of Pine street.

OBITUARY

Mr. and Mrs. John Walworth of Southwick, Mass., spent the week and with Mrs. Henry Blackburn of Pine street.

OBITUARY

Mr. and Mrs. John Walworth of Southwick, Mass., spent the week and with Mrs. Henry Blackburn of Pine street.

OBITUARY

Mr. and Mrs. John Walworth of Southwick, Mass., spent the week and with Mrs. Henry Blackburn of Pine street.

OBITUARY

Mr. and Mrs. John Walworth of Southwick, Mass., spent the week and with Mrs. Henry Blackburn of Pine street.

OBITUARY

Mr. and Mrs. John Walworth of Southwick, Mass., spent the week and with Mrs. Henry Blackburn of Pine street.

OBITUARY

Mr. and Mrs. John Walworth of Southwick, Mass., spent the week and with Mrs. Henry Blackburn of Pine street.

OBITUARY

Mr. and Mrs. John Walworth of Southwick, Mass., spent the week and with Mrs. Henry Blackburn of Pine street.

OBITUARY

Mr. and Mrs. John Walworth of Southwick, Mass., spent the week and with Mrs. Henry Blackburn of Pine street.

OBITUARY

Mr. and Mrs. John Walworth of Southwick, Mass., spent the week and with Mrs. Henry Blackburn of Pine street.

OBITUARY

Mr. and Mrs. John Walworth of Southwick, Mass., spent the week and with Mrs. Henry Blackburn of Pine street.

OBITUARY

Mr. and Mrs. John Walworth of Southwick, Mass., spent the week and with Mrs. Henry Blackburn of Pine street.

OBITUARY

Mr. and Mrs. John Walworth of Southwick, Mass., spent the week and with Mrs. Henry Blackburn of Pine street.

OBITUARY

Mr. and Mrs. John Walworth of Southwick, Mass., spent the week and with Mrs. Henry Blackburn of Pine street.

OBITUARY

Mr. and Mrs. John Walworth of Southwick, Mass., spent the week and with Mrs. Henry Blackburn of Pine street.

OBITUARY

Mr. and Mrs. John Walworth of Southwick, Mass., spent the week and with Mrs. Henry Blackburn of Pine street.

OBITUARY

Mr. and Mrs. John Walworth of Southwick, Mass., spent the week and with Mrs. Henry Blackburn of Pine street.

OBITUARY

Mr. and Mrs. John Walworth of Southwick, Mass., spent the week and with Mrs. Henry Blackburn of Pine street.

OBITUARY

Mr. and Mrs. John Walworth of Southwick, Mass., spent the week and with Mrs. Henry Blackburn of Pine street.

OBITUARY

Mr. and Mrs. John Walworth of Southwick, Mass., spent the week and with Mrs. Henry Blackburn of Pine street.

OBITUARY

Mr. and Mrs. John Walworth of Southwick, Mass., spent the week and with Mrs. Henry Blackburn of Pine street.

OBITUARY

Mr. and Mrs. John Walworth of Southwick, Mass., spent the week and with Mrs. Henry Blackburn of Pine street.

OBITUARY

Mr. and Mrs. John Walworth of Southwick, Mass., spent the week and with Mrs. Henry Blackburn of Pine street.

OBITUARY

Mr. and Mrs. John Walworth of Southwick, Mass., spent the week and with Mrs. Henry Blackburn of Pine street.

OBITUARY

Mr. and Mrs. John Walworth of Southwick, Mass., spent the week and with Mrs. Henry Blackburn of Pine street.

OBITUARY

Mr. and Mrs. John Walworth of Southwick, Mass., spent the week and with Mrs. Henry Blackburn of Pine street.

OBITUARY

Mr. and Mrs. John Walworth of Southwick, Mass., spent the week and with Mrs. Henry Blackburn of Pine street.

OBITUARY

Mr. and Mrs. John Walworth of Southwick, Mass., spent the week and with Mrs. Henry Blackburn of Pine street.

OBITUARY

Mr. and Mrs. John Walworth of Southwick, Mass., spent the week and with Mrs. Henry Blackburn of Pine street.

OBITUARY

Mr. and Mrs. John Walworth of Southwick, Mass., spent the week and with Mrs. Henry Blackburn of Pine street.

OBITUARY

Mr. and Mrs. John Walworth of Southwick, Mass., spent the week and with Mrs. Henry Blackburn of Pine street.

OBITUARY

Mr. and Mrs. John Walworth of Southwick, Mass., spent the week and with Mrs. Henry Blackburn of Pine street.

OBITUARY

Mr. and Mrs. John Walworth of Southwick, Mass., spent the week and with Mrs. Henry Blackburn of Pine street.

OBITUARY

Mr. and Mrs. John Walworth of Southwick, Mass., spent the week and with Mrs. Henry Blackburn of Pine street.

OBITUARY

Mr. and Mrs. John Walworth of Southwick, Mass., spent the week and with Mrs. Henry Blackburn of Pine street.

OBITUARY

Mr. and Mrs. John Walworth of Southwick, Mass., spent the week and with Mrs. Henry Blackburn of Pine street.

OBITUARY

Mr. and Mrs. John Walworth of Southwick, Mass., spent the week and with Mrs. Henry Blackburn of Pine street.

OBITUARY

Mr. and Mrs. John Walworth of Southwick, Mass., spent the week and with Mrs. Henry Blackburn of Pine street.

OBITUARY

Mr. and Mrs. John Walworth of Southwick, Mass., spent the week and with Mrs. Henry Blackburn of Pine street.

OBITUARY

Mr. and Mrs. John Walworth of Southwick, Mass., spent the week and with Mrs. Henry Blackburn of Pine street.

OBITUARY

Mr. and Mrs. John Walworth of Southwick, Mass., spent the week and with Mrs. Henry Blackburn of Pine street.

OBITUARY

Mr. and Mrs. John Walworth of Southwick, Mass., spent the week and with Mrs. Henry Blackburn of Pine street.

OBITUARY

Mr. and Mrs. John Walworth of Southwick, Mass., spent the week and with Mrs. Henry Blackburn of Pine street.

OBITUARY

Mr. and Mrs. John Walworth of Southwick, Mass., spent the week and with Mrs. Henry Blackburn of Pine street.

OBITUARY

Mr. and Mrs. John Walworth of Southwick, Mass., spent the week and with Mrs. Henry Blackburn of Pine street.

OBITUARY

Mr. and Mrs. John Walworth of Southwick, Mass., spent the week and with Mrs. Henry Blackburn of Pine street.

OBITUARY

Mr. and Mrs. John Walworth of Southwick, Mass., spent the week and with Mrs. Henry Blackburn of Pine street.

OBITUARY

Mr. and Mrs. John Walworth of Southwick, Mass., spent the week and with Mrs. Henry Blackburn of Pine street.

OBITUARY

Mr. and Mrs. John Walworth of Southwick, Mass., spent the week and with Mrs. Henry Blackburn of Pine street.

OBITUARY

Mr. and Mrs. John Walworth of Southwick, Mass., spent the week and with Mrs. Henry Blackburn of Pine street.

OBITUARY

Mr. and Mrs. John Walworth of Southwick, Mass., spent the week and with Mrs. Henry Blackburn of Pine street.

OBITUARY

Mr. and Mrs. John Walworth of Southwick, Mass., spent the week and with Mrs. Henry Blackburn of Pine street.

OBITUARY

Mr. and Mrs. John Walworth of Southwick, Mass., spent the week and with Mrs. Henry Blackburn of Pine street.

OBITUARY

Mr. and Mrs. John Walworth of Southwick, Mass., spent the week and with Mrs. Henry Blackburn of Pine street.

OBITUARY

Mr. and Mrs. John Walworth of Southwick, Mass., spent the week and with Mrs. Henry Blackburn of Pine street.

OBITUARY

Mr. and Mrs. John Walworth of Southwick, Mass., spent the week and with Mrs. Henry Blackburn of Pine street.

OBITUARY

Mr. and Mrs. John Walworth of Southwick, Mass., spent the week and with Mrs. Henry Blackburn of Pine street.

OBITUARY

Mr. and Mrs. John Walworth of Southwick, Mass., spent the week and with Mrs. Henry Blackburn of Pine street.

OBITUARY

Mr. and Mrs. John Walworth of Southwick, Mass., spent the week and with Mrs. Henry Blackburn of Pine street.

OBITUARY

Mr. and Mrs. John Walworth of Southwick, Mass., spent the week and with Mrs. Henry Blackburn of Pine street.

OBITUARY

Mr. and Mrs. John Walworth of Southwick, Mass., spent the week and with Mrs. Henry Blackburn of Pine street.

OBITUARY

Mr. and Mrs. John Walworth of Southwick, Mass., spent the week and with Mrs. Henry Blackburn of Pine street.

OBITUARY

Mr. and Mrs. John Walworth of Southwick, Mass., spent the week and with Mrs. Henry Blackburn of Pine street.

OBITUARY

Mr. and Mrs. John Walworth of Southwick, Mass., spent the week and with Mrs. Henry Blackburn of Pine street.

OBITUARY

Mr. and Mrs. John Walworth of Southwick, Mass., spent the week and with Mrs. Henry Blackburn of Pine street.

OBITUARY

Mr. and Mrs. John Walworth of Southwick, Mass., spent the week and with Mrs. Henry Blackburn of Pine street.

OBITUARY

Mr. and Mrs. John Walworth of Southwick, Mass., spent the week and with Mrs. Henry Blackburn of Pine street.

OBITUARY

Mr. and Mrs. John Walworth of Southwick, Mass., spent the week and with Mrs. Henry Blackburn of Pine street.

OBITUARY

Mr. and Mrs. John Walworth of Southwick, Mass., spent the week and with Mrs. Henry Blackburn of Pine street.

OBITUARY

Mr. and Mrs. John Walworth of Southwick, Mass., spent the week and with Mrs. Henry Blackburn of Pine street.

OBITUARY

Mr. and Mrs. John Walworth of Southwick, Mass., spent the week and with Mrs. Henry Blackburn of Pine street.

OBITUARY

Mr. and Mrs. John Walworth of Southwick, Mass., spent the week and with Mrs. Henry Blackburn of Pine street.

OBITUARY

Mr. and Mrs. John Walworth of Southwick, Mass., spent the week and with Mrs. Henry Blackburn of Pine street.

OBITUARY

Mr. and Mrs. John Walworth of Southwick, Mass., spent the week and with Mrs. Henry Blackburn of Pine street.

OBITUARY

Mr. and Mrs. John Walworth of Southwick, Mass., spent the week and with Mrs. Henry Blackburn of Pine street.

OBITUARY

Mr. and Mrs. John Walworth of Southwick, Mass., spent the week and with Mrs. Henry Blackburn of Pine street.

OBITUARY

Mr. and Mrs. John Walworth of Southwick, Mass., spent the week and with Mrs. Henry Blackburn of Pine street.

OBITUARY

Mr. and Mrs. John Walworth of Southwick, Mass., spent the week and with Mrs. Henry Blackburn of Pine street.

OBITUARY

Mr. and Mrs. John Walworth of Southwick, Mass., spent the week and with Mrs. Henry Blackburn of Pine street.

OBITUARY

Mr. and Mrs. John Walworth of Southwick, Mass., spent the week and with Mrs. Henry Blackburn of Pine street.

OBITUARY

Mr. and Mrs. John Walworth of Southwick, Mass., spent the week and with Mrs. Henry Blackburn of Pine street.

OBITUARY

Mr. and Mrs. John Walworth of Southwick, Mass., spent the week and with Mrs. Henry Blackburn of Pine street.

OBITUARY

Mr. and Mrs. John Walworth of Southwick, Mass., spent the week and with Mrs. Henry Blackburn of Pine street.

OBITUARY

Mr. and Mrs. John Walworth of Southwick, Mass., spent the week and with Mrs. Henry Blackburn of Pine street.

OBITUARY

Mr. and Mrs. John Walworth of Southwick, Mass., spent the week and with Mrs. Henry Blackburn of Pine street.

OBITUARY

Mr. and Mrs. John Walworth of Southwick, Mass., spent the week and with Mrs. Henry Blackburn of Pine street.

OBITUARY

Mr. and Mrs. John Walworth of Southwick, Mass., spent the week and with Mrs. Henry Blackburn of Pine street.

OBITUARY

Mr. and Mrs. John Walworth of Southwick, Mass., spent the week and with Mrs. Henry Blackburn of Pine street.

OBITUARY

Mr. and Mrs. John Walworth of Southwick, Mass., spent the week and with Mrs. Henry Blackburn of Pine street.

OBITUARY

Mr. and Mrs. John Walworth of Southwick, Mass., spent the week and with Mrs. Henry Blackburn of Pine street.

OBITUARY