

Postcard Collection of Verna DiFazio Findlay, born in 1925.

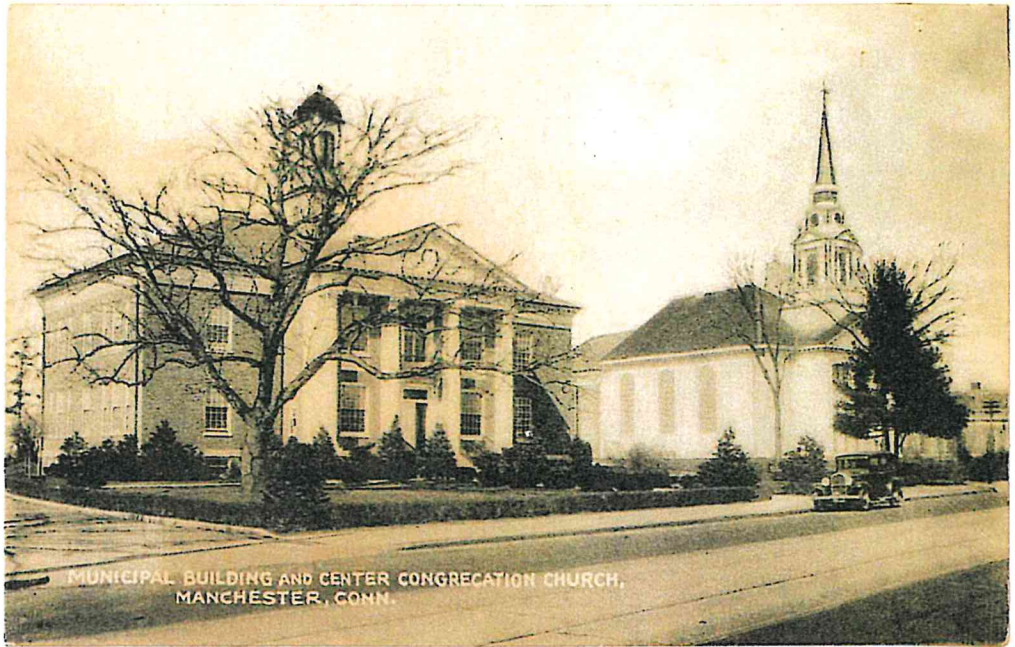
Verna was born in Hartford and moved to Manchester just before starting high school, graduating from Manchester High School in 1943. Later, Verna rented an apartment on Ridgewood Street, but was able to buy her own home at 53 Thomas Drive, Manchester, in 1979.

Postcards donated by her daughter, Linda Findlay.

Linda was born and raised in Manchester and is pleased to present these postcards!

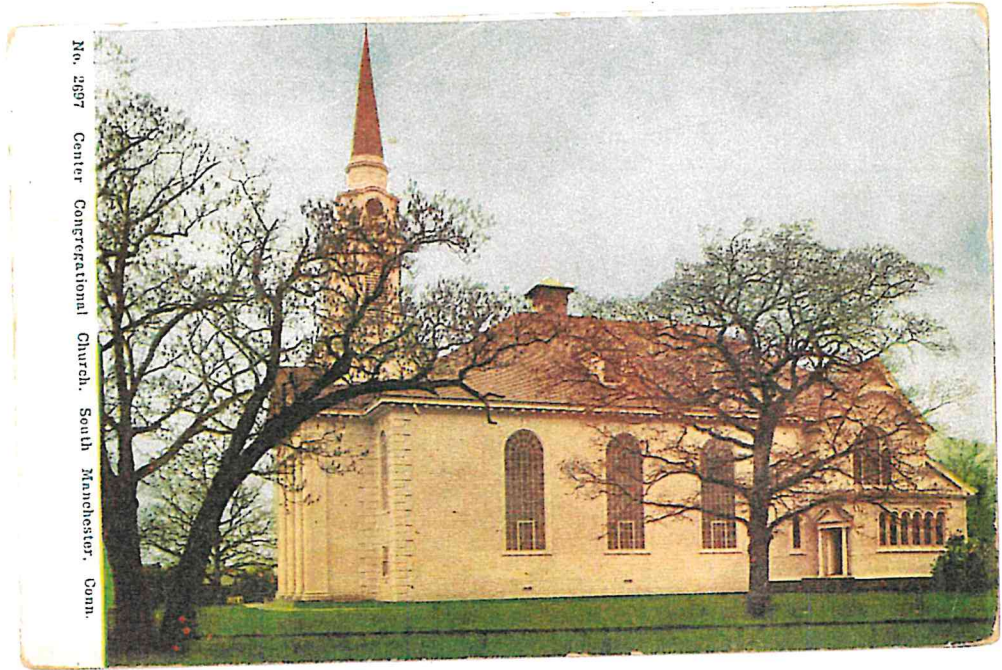
Webmaster's note: Most of the postcards are undated – where a date is available, I have written it near the postcard. This is a fabulous gift to the public. Sending gratitude to both mother and daughter for making these available to the members and friends of the Manchester Historical Society.

– webmaster, Susan Barlow, April 2018.



MUNICIPAL BUILDING AND CENTER CONGREGATION CHURCH,
MANCHESTER, CONN.





No. 2697 Center Congregational Church. South Manchester, Conn.

20 Hartford
Rd., Frank Cheney,
Jr. mansion
pre 1921



ONE OF SOUTH MANCHESTER'S RESIDENCE.

16 Madison Ave. I got Jim Green Thank you
for letting me move
from N. to to you
2014

Pub. by Fred W. Mills, South Manchester, Conn.

Torn down
in 1930s



RESIDENCE OF COL. F. W. CHENEY. SOUTH MANCHESTER, CONN.



RESIDENCE OF MRS. ARTHUR CHENEY, SOUTH MANCHESTER, CONN.



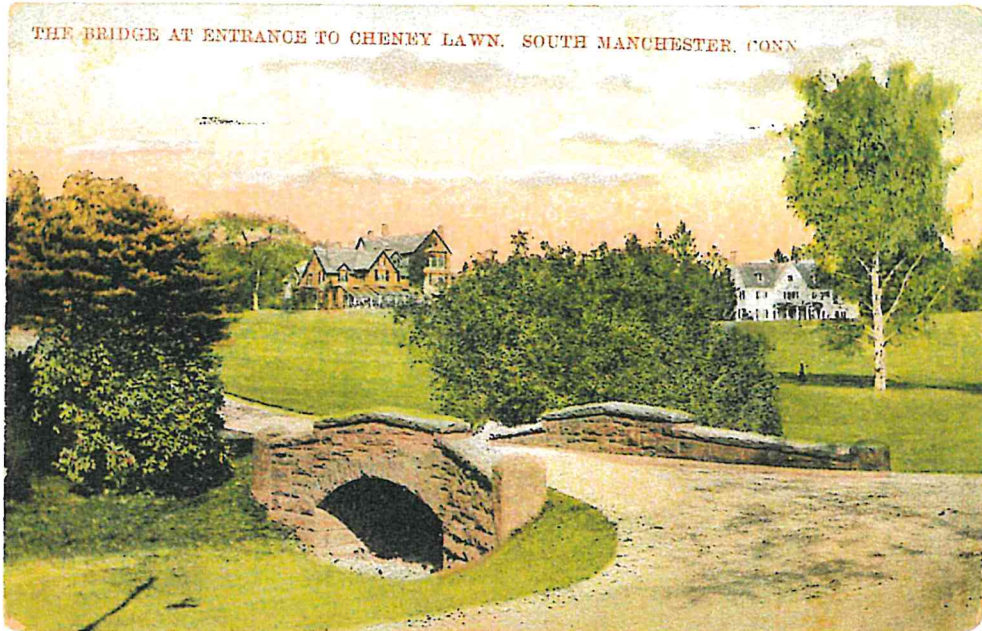
CHENEY HOMESTEAD.

2016

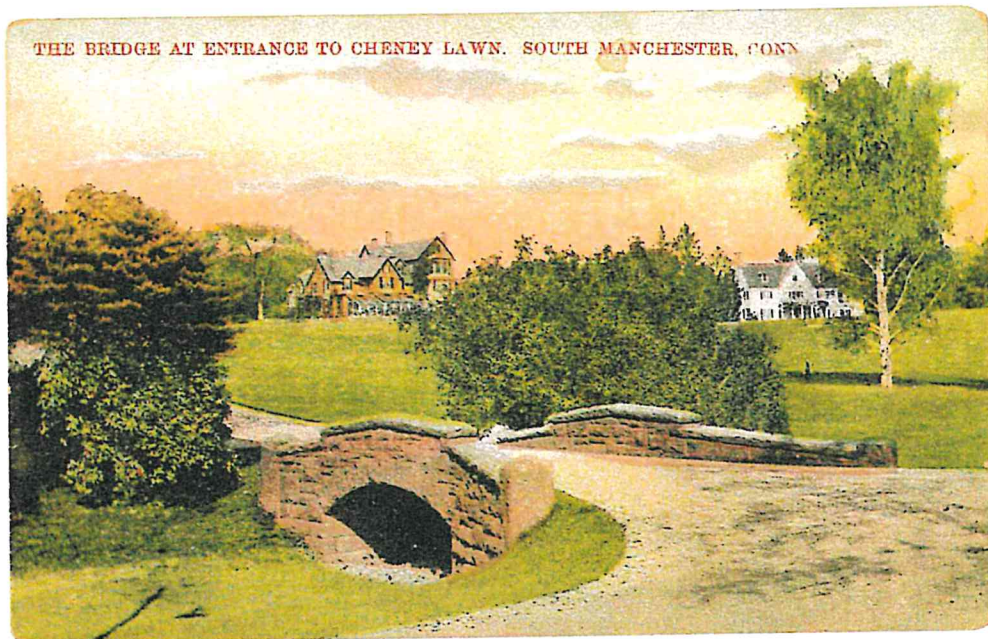


CHENEY'S LAWN AND RESIDENCES,
SOUTH MANCHESTER, CONN.

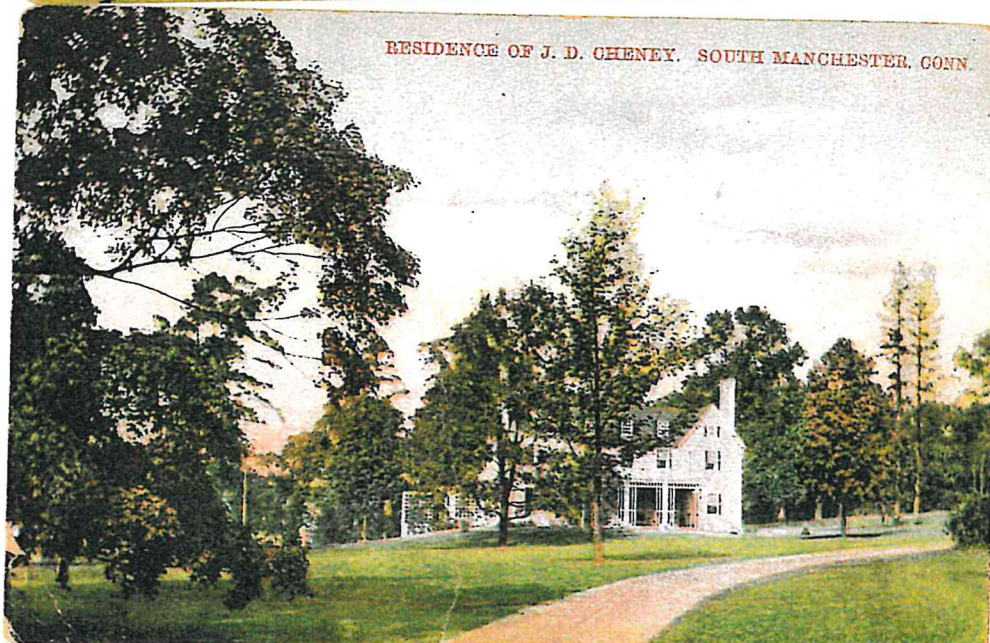
THE BRIDGE AT ENTRANCE TO CHENEY LAWN. SOUTH MANCHESTER, CONN

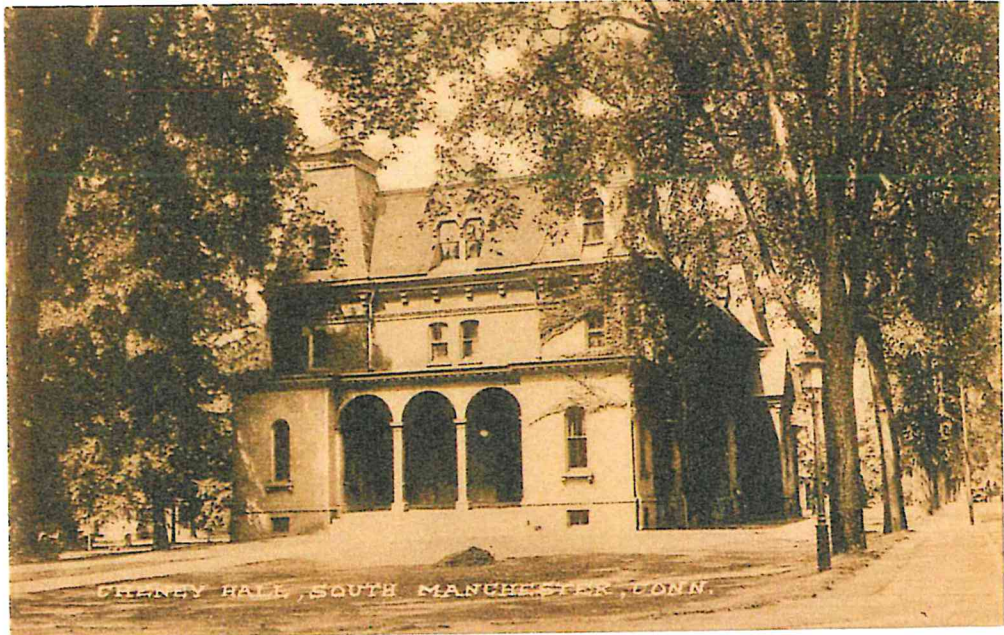


THE BRIDGE AT ENTRANCE TO CHENEY LAWN. SOUTH MANCHESTER, CONN



RESIDENCE OF J. D. CHENEY. SOUTH MANCHESTER, CONN.





CHENEY HALL, SOUTH MANCHESTER, CONN.

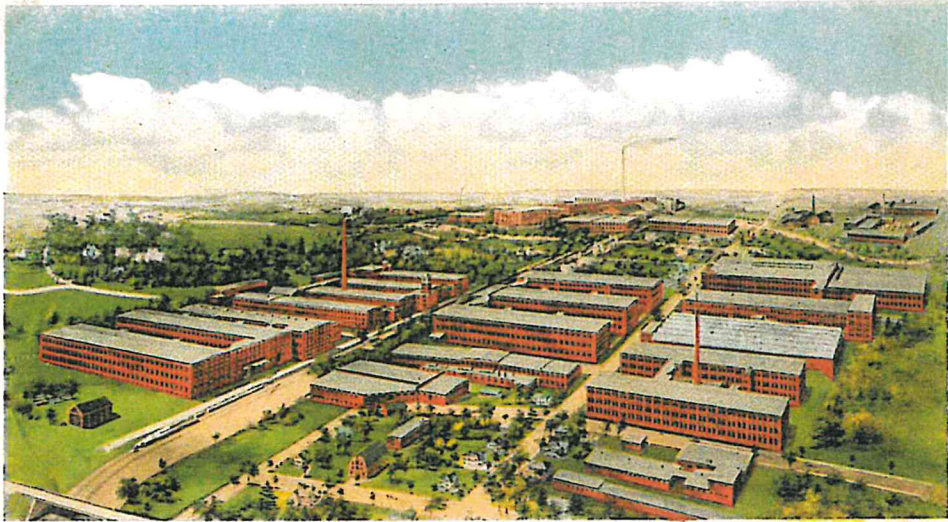


Cheney Homestead, South Manchester, Conn.



ONE OF THE MANY CHENEY SILK MILLS, SOUTH MANCHESTER, CONN.

Office Dyeing and Finishing Mills Box Factory



Spun Silk Mills, Length 310 Ft. Velvet Mills, Length 300 Ft. Spun Silk Dressing Mill, Length 496 Ft.
 Throwing Upholstery & Dress Goods Weaving Mills Length 330 Ft. Store House Machine Shop Yarn Dye House Length 372 Ft.
 Velvet Weave Shed, Length 320 Ft.
 Ribbon Mills, Length 300 Ft.
 Total Area of Floor Space 35 1/2 Acres
THE MILLS OF CHENEY BROTHERS, SOUTH MANCHESTER, CONN.

*Dear Jessie. Thanks for the postal. Dec 7, 1905
 With love and best wishes from Aunt Laura*



1714

HIGH SCHOOL, SOUTH MANCHESTER CONN.

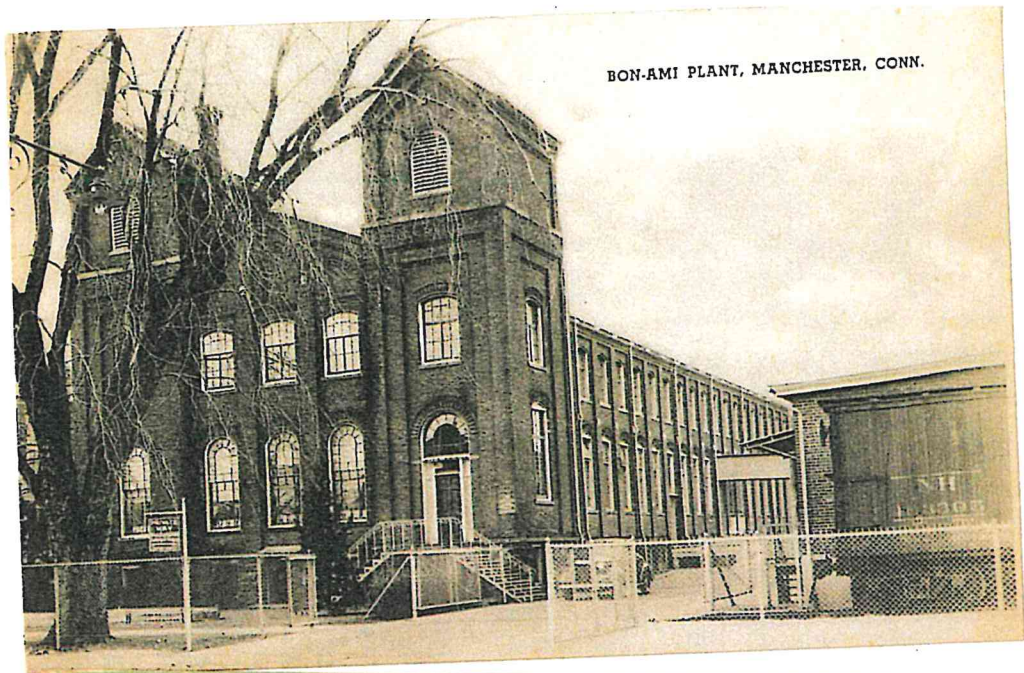
ILLUST. POST CARD CO., N. Y.

1905

HOTEL SHERIDAN, MANCHESTER, CONN.

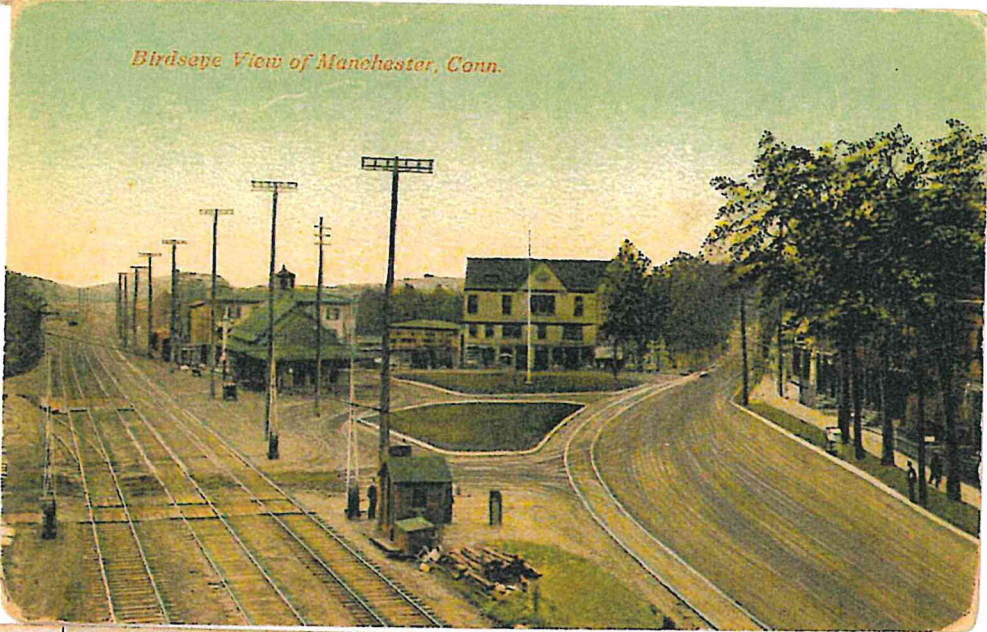
Downtown





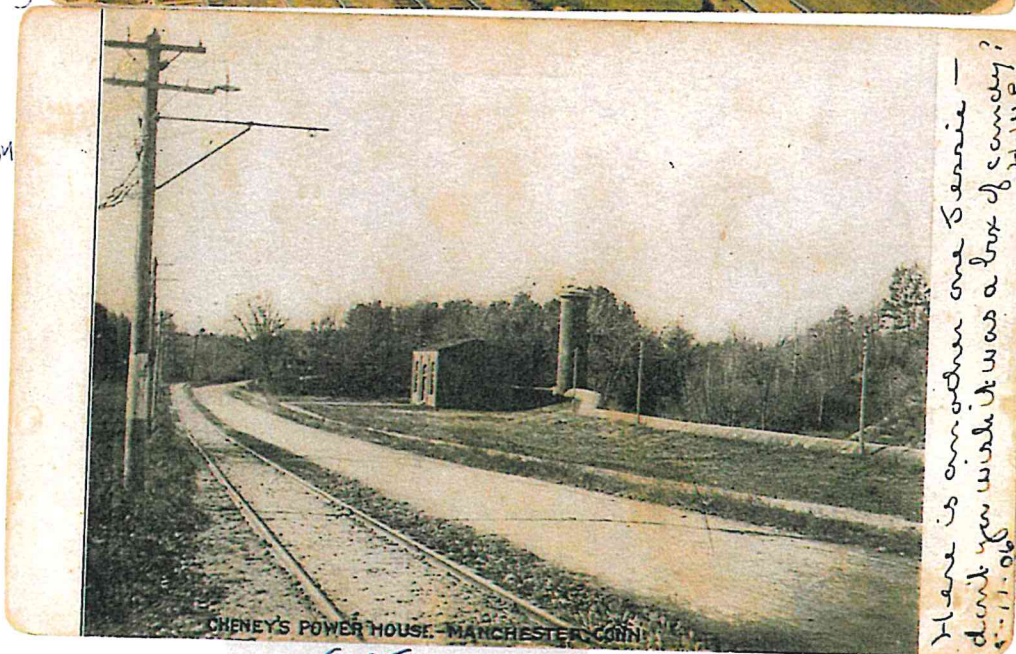
BON-AMI PLANT, MANCHESTER, CONN.

Hilliard St.



Birdseye View of Manchester, Conn.

Today we would say "North Manchester," but c. 1905 it was the "Manchester Depot" where the main r.r. line came through.



CHENEY'S POWER HOUSE - MANCHESTER, CONN.

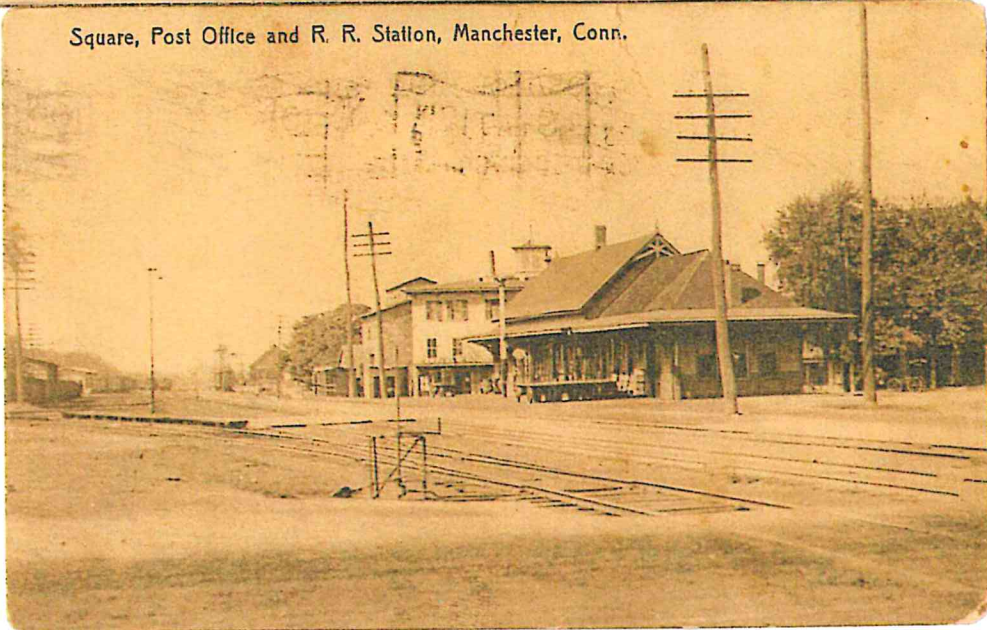
At intersection of North Main & Hockanum River.

There is another one Sennie - don't you wish it was a box of candy?
H.W.P.
11-11-06

1905



DEPOT SQUARE, MANCHESTER, CONN.



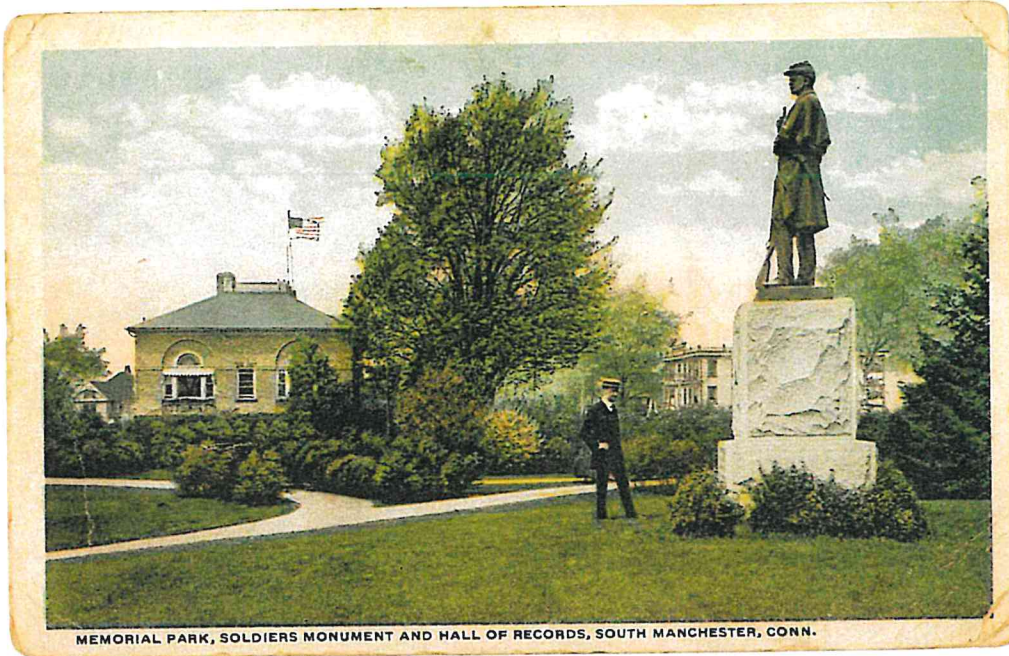
Square, Post Office and R. R. Station, Manchester, Conn.

1920

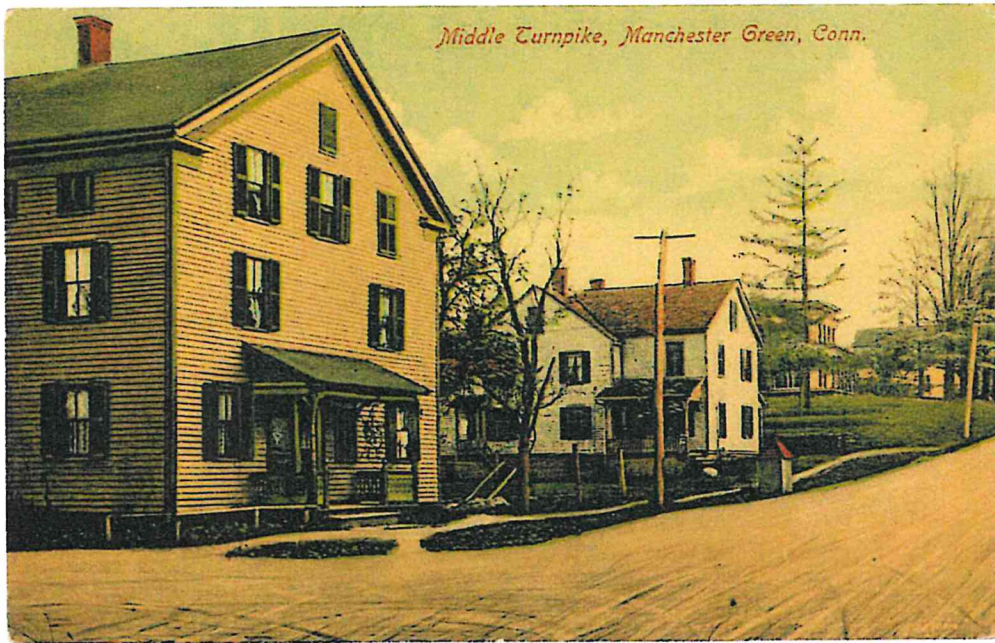
Old North End



North Main Street, Looking West, Manchester, Conn.

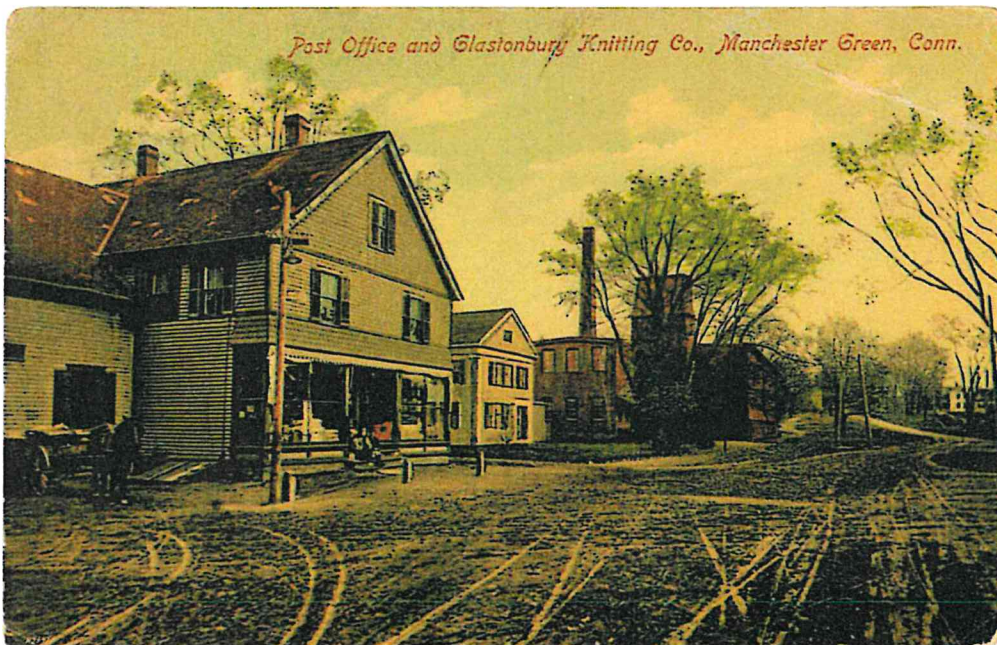


MEMORIAL PARK, SOLDIERS MONUMENT AND HALL OF RECORDS, SOUTH MANCHESTER, CONN.



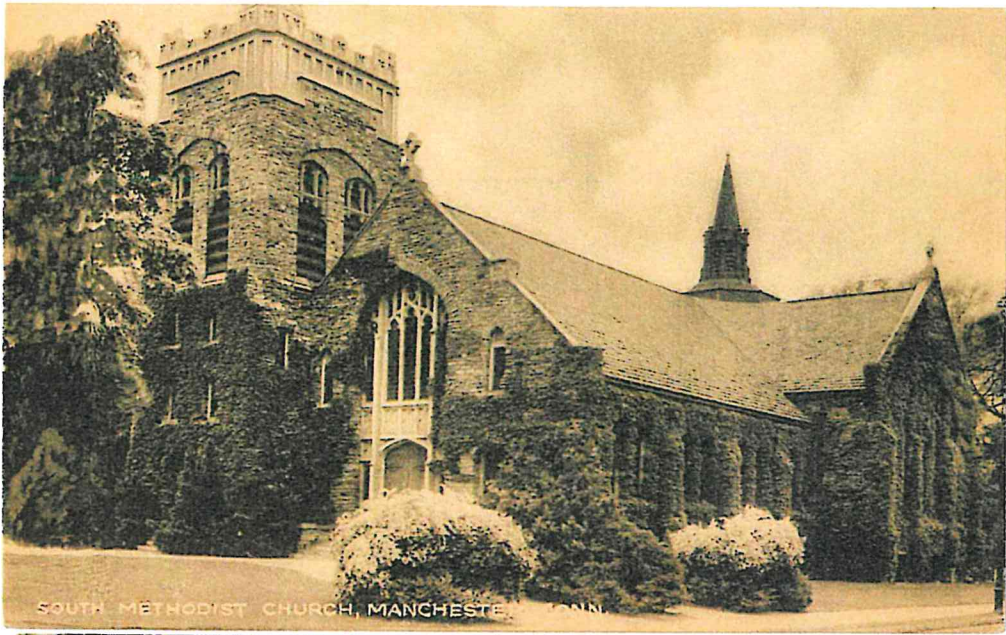
Middle Turnpike, Manchester Green, Conn.

Manchester
Green



Post Office and Glastonbury Knitting Co., Manchester Green, Conn.

1910



SOUTH METHODIST CHURCH, MANCHESTER, CONN.

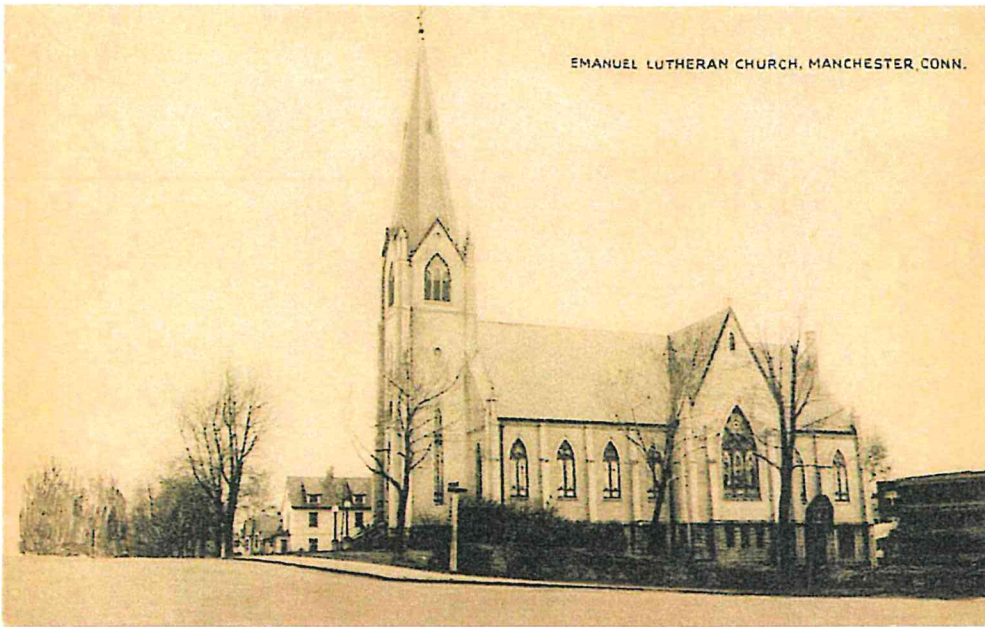


Episcopal Church
So. Manchester
Conn.



Swedish Lutheran Church. So. Manchester, Conn.

Dec 14, 1906
Dear Jessie,
Another postal for your
collection. Aunt Sara.



EMANUEL LUTHERAN CHURCH, MANCHESTER, CONN.



Winter Scene, Main St., So. Manchester, Conn.



PHOTO BY
MAGNELL NEWS CO.
50 MANCHESTER, CONN.

TEACHERS HALL - 50 MANCHESTER, CONN.

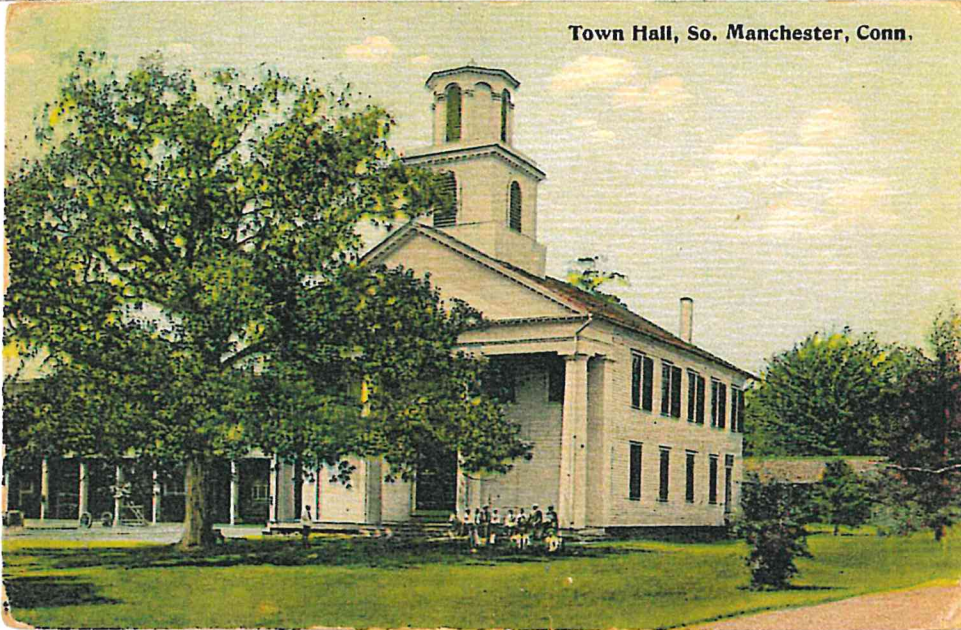
Manchester, Conn., May 22. Dear Evelyn, we arrived home safe and sound and I was not tired either, how
 you found your watch I hope so, how is ma's hope she is not sick
 B. Lewis

1906

WEST SIDE RECREATION BLDG., SO. MANCHESTER, CONN.

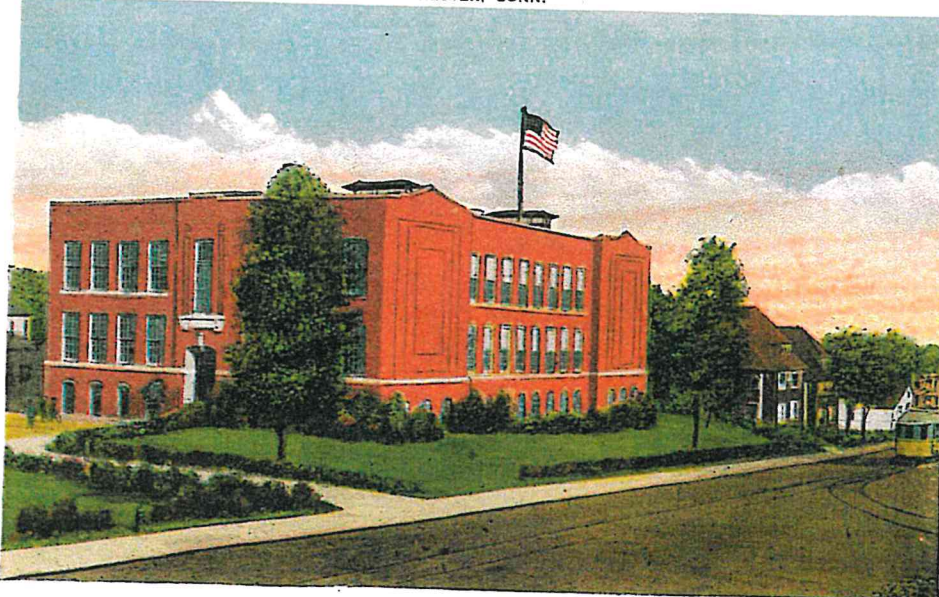


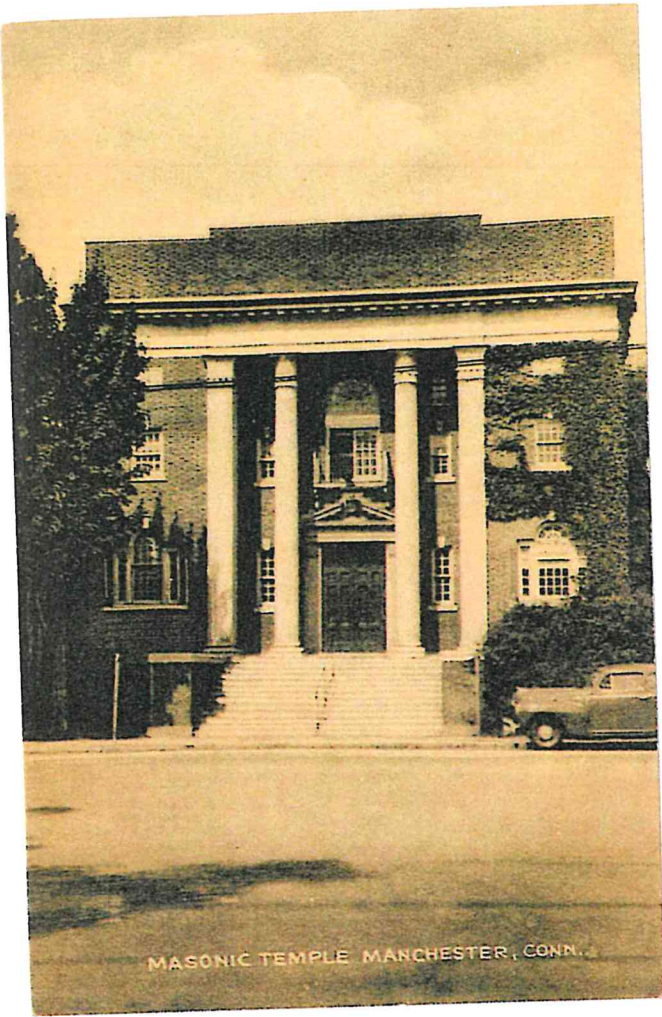
Town Hall, So. Manchester, Conn.



1911

LINCOLN SCHOOL AND CENTER, SOUTH MANCHESTER, CONN.

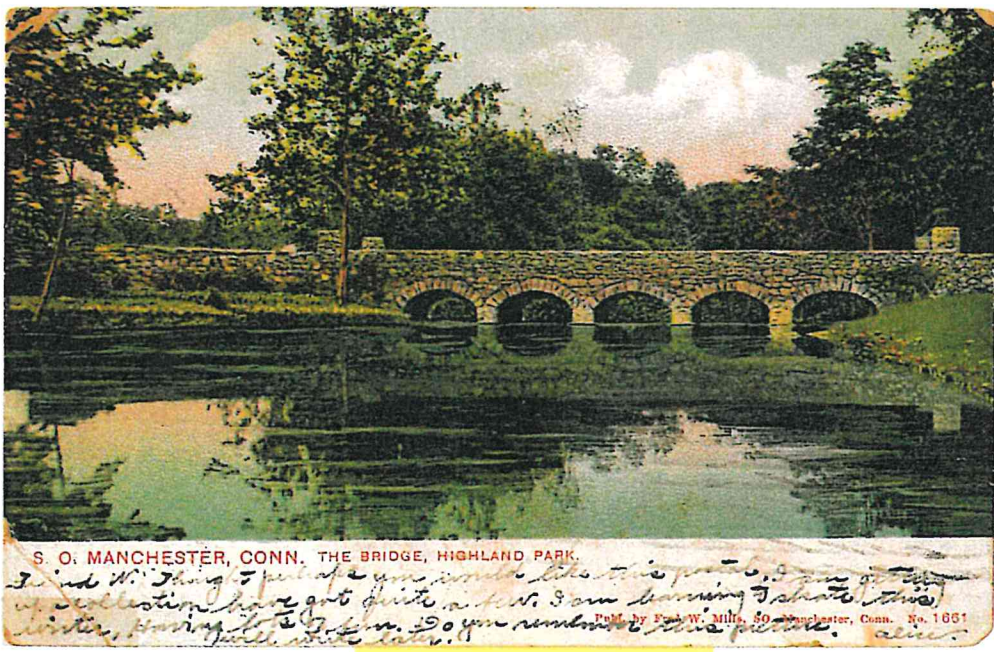




MASONIC TEMPLE MANCHESTER, CONN.



CENTER SPRING
S O MANCHESTER, CONN.



S. O. MANCHESTER, CONN. THE BRIDGE, HIGHLAND PARK.

*I find it interesting to put up a year's worth like this postcard, I am sure
 my collection have got quite a few. I am learning I should take
 winter, having to be in. So you remember this picture. *alive**

Publ. by F. W. Mills, 50 Manchester, Conn. No. 1661

1905



October 1913
School fire

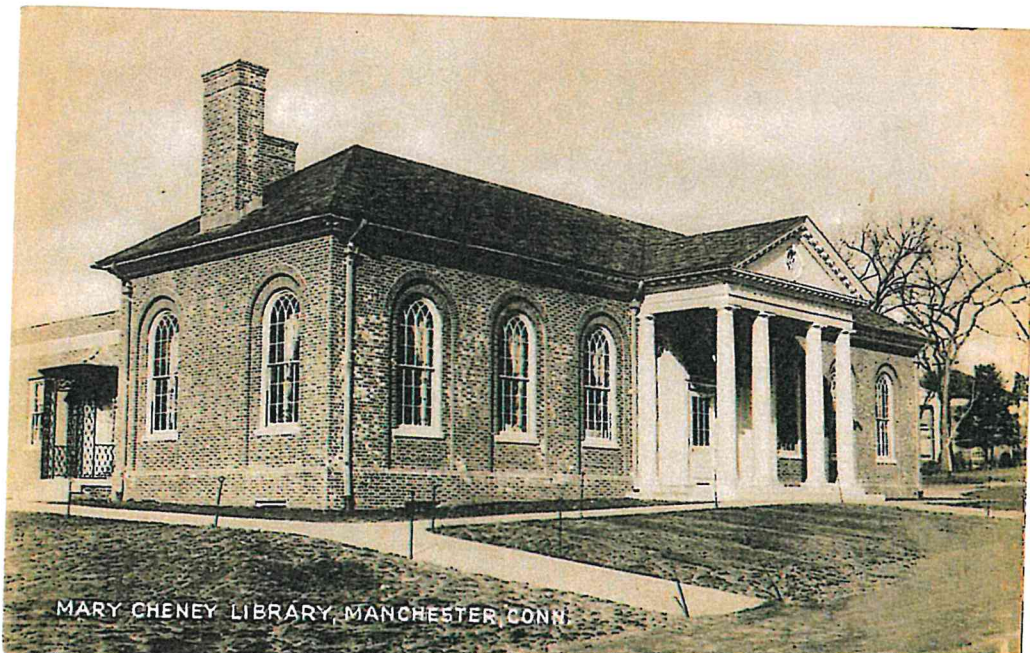
No 1891. Franz Hild, New York. Published for E. W. Mills Co., Manchester, Conn.



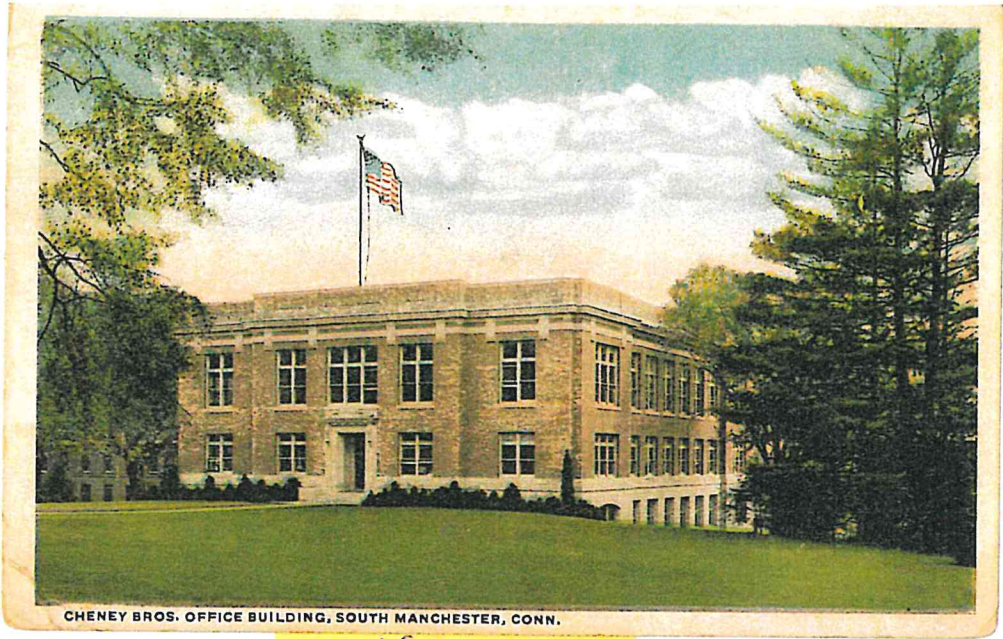
Forest House, South Manchester, Conn.



HIGH SCHOOL, MANCHESTER, CONN.



MARY CHENEY LIBRARY, MANCHESTER, CONN.



CHENEY BROS. OFFICE BUILDING, SOUTH MANCHESTER, CONN.

1920



Cheney Bros. Old Mill, So. Manchester, Conn.



Cheney Silk Weaving Mill, South Manchester, Conn.

VIEW OF GLOBE HOLLOW POND, SOUTH MANCHESTER, CONN.



Globe
Hollow



MUNICIPAL BATHING BEACH, MANCHESTER, CONN.

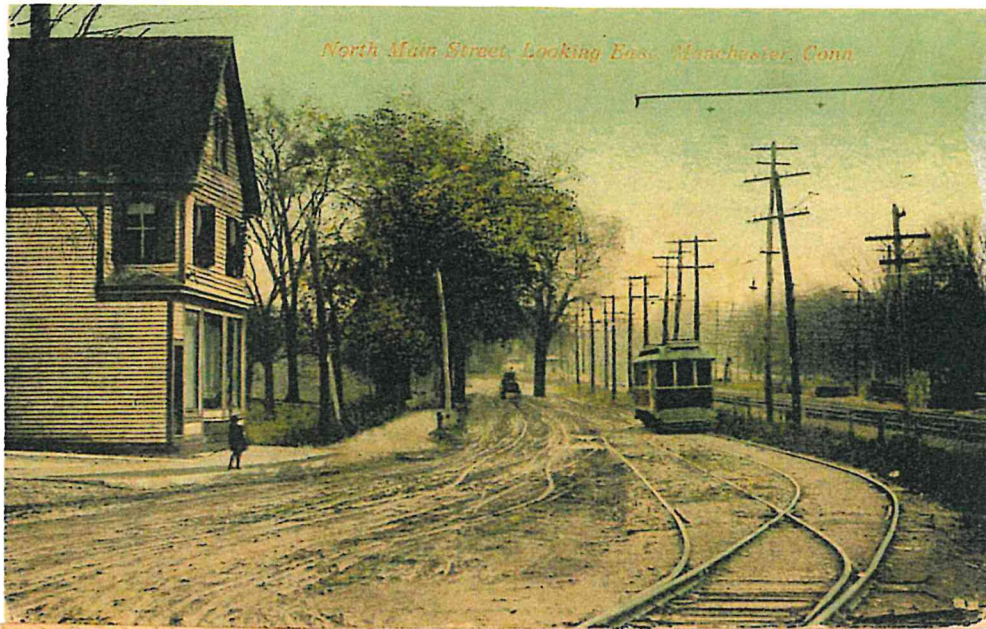
Globe
Hollow



Municipal Swimming Pool, Manchester, Conn.



Gould Pond, So. Manchester, Conn.



North Main Street, Looking East, Manchester, Conn.

Old
North
End



Y. M. C. A., MANCHESTER, CONN.



Don J. J. Jr. Sept 1906
This is a coll

Morning North Hill
Amid Yarns

EIGHTH DISTRICT SCHOOL MANCHESTER, CONN.

1906



*Apels Bridge,
Manchester, Conn.*



Adams Pond, Manchester, Conn.

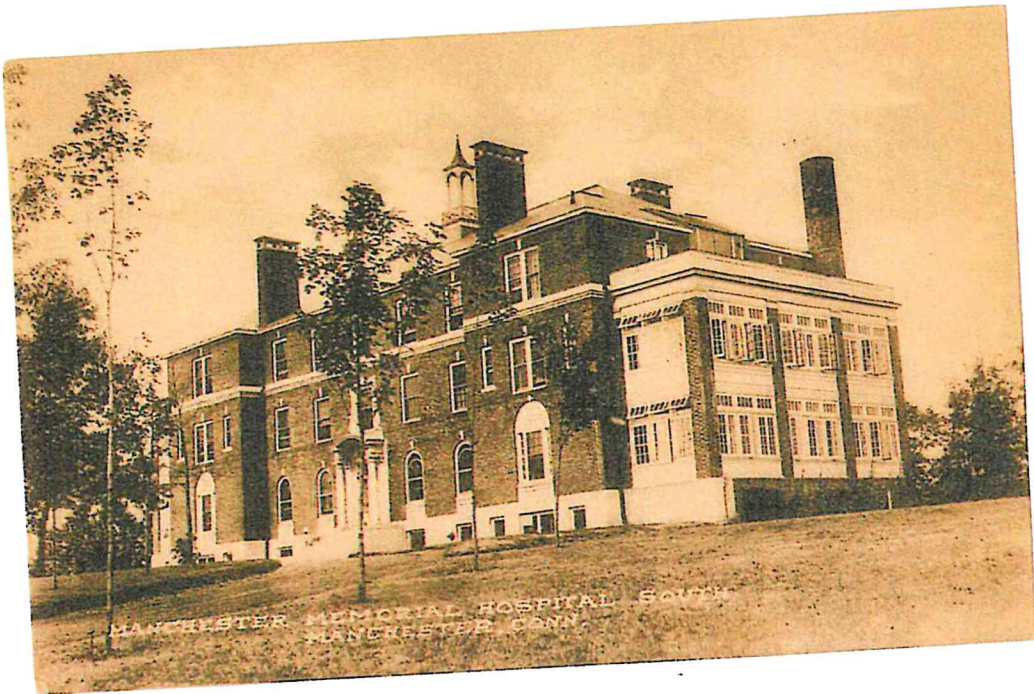


THE CROSSING, BOLTON NOTCH.

2015



MEMORIAL HOSPITAL, MANCHESTER, CONN.



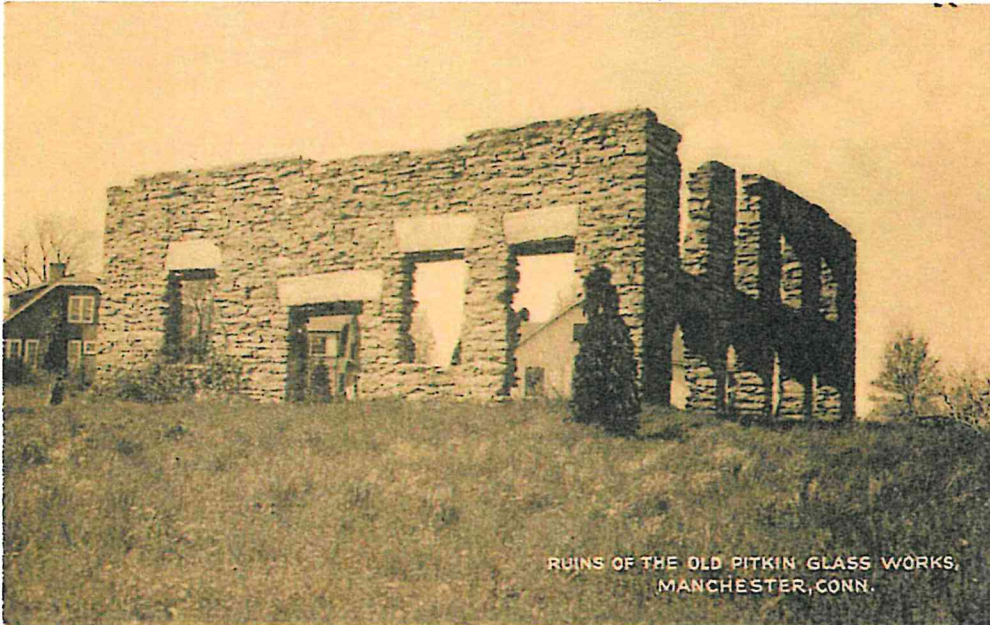
MANCHESTER MEMORIAL HOSPITAL SOUTH
MANCHESTER, CONN.





PUB. BY FRED W. MILLS

THE OLD WOODBRIDGE TAVERN
MANCHESTER GREEN, CONN.



RUINS OF THE OLD PITKIN GLASS WORKS,
MANCHESTER, CONN.



RUINS OF GLASS FACTORY
MANCHESTER GREEN, CONN.

still still.
How are you
anyhow. I
am a lin &
kicking as
usual.

Received
your letter
and will
write soon.

Did you visit this place when
you were here. if not don't forget
to next time you come. - Dorothy.

Oxford Golf Club House, So. Manchester, Conn.



Case Pond

57197 Panorama of Lake, Highland Park, So. Manchester, Conn.

