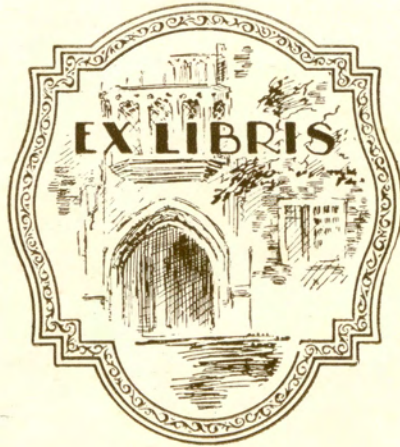


# SOMANIHIS

COMMENCEMENT ISSUE, JUNE, 1930

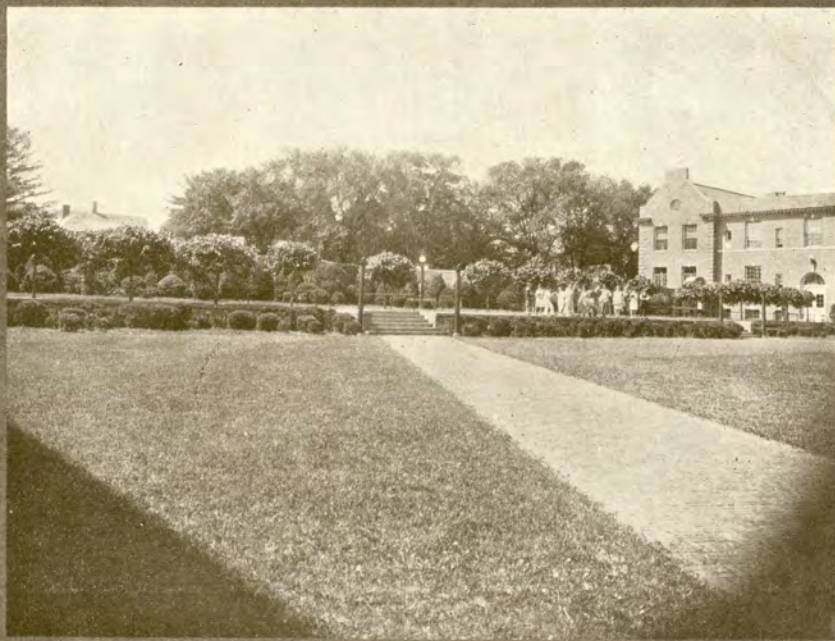




---

*"A memory of four short years,  
Of the things we love the best,  
Of work and play, of smiles and tears—  
The memory of M. H. S."*

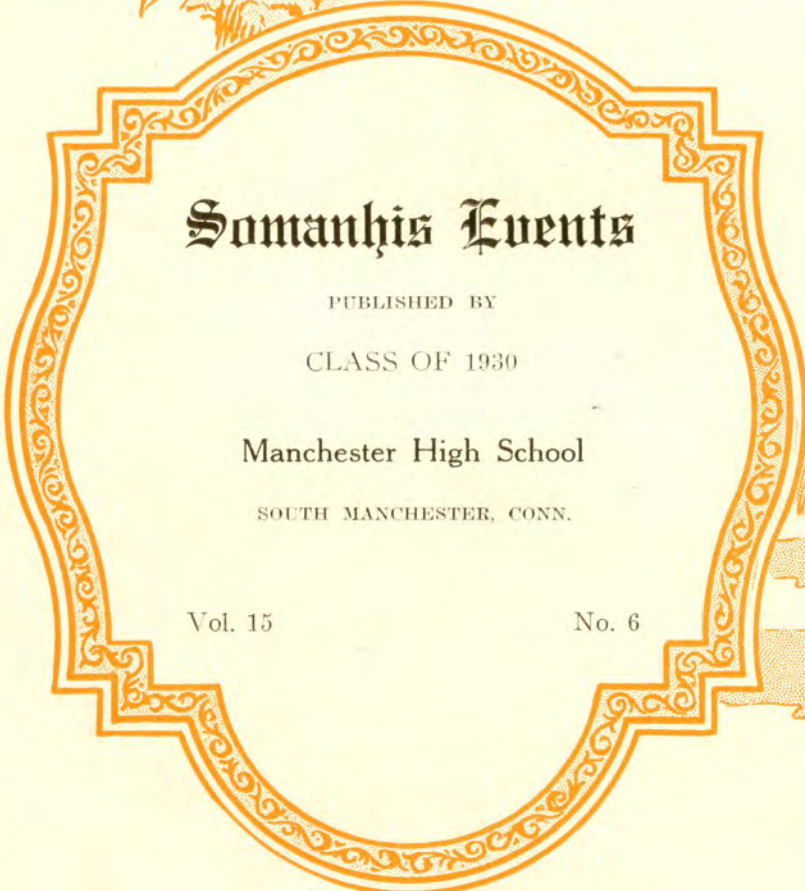





THE QUADRANGLE







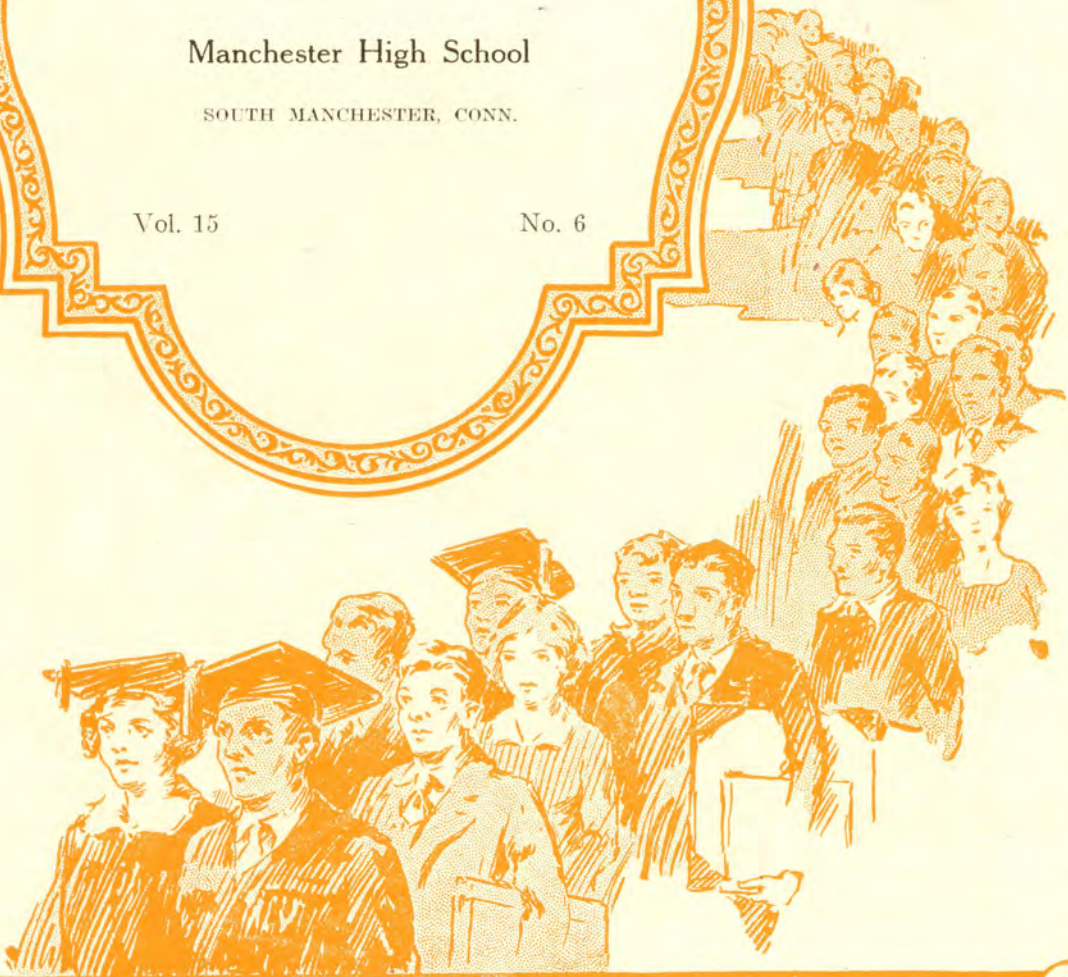
# Somanhis Events

PUBLISHED BY  
CLASS OF 1930

Manchester High School  
SOUTH MANCHESTER, CONN.

Vol. 15

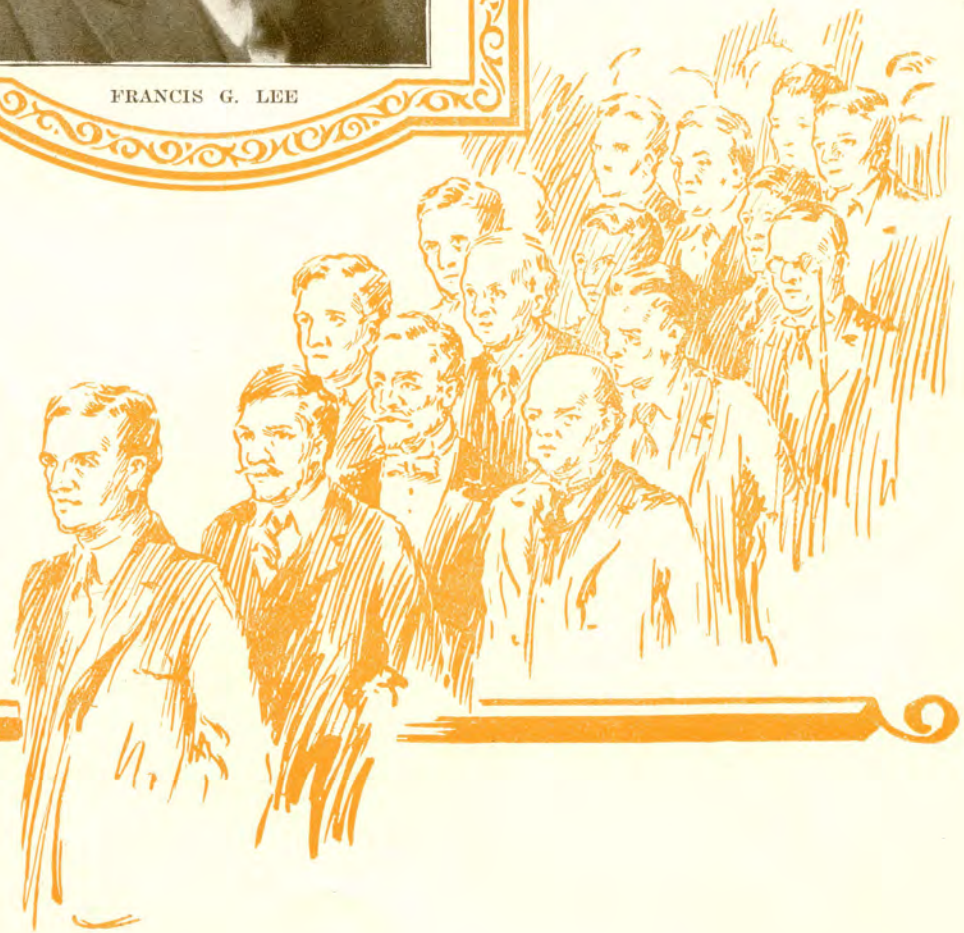
No. 6







FRANCIS G. LEE







**Dedication**

To

**Mr. Francis G. Lee**

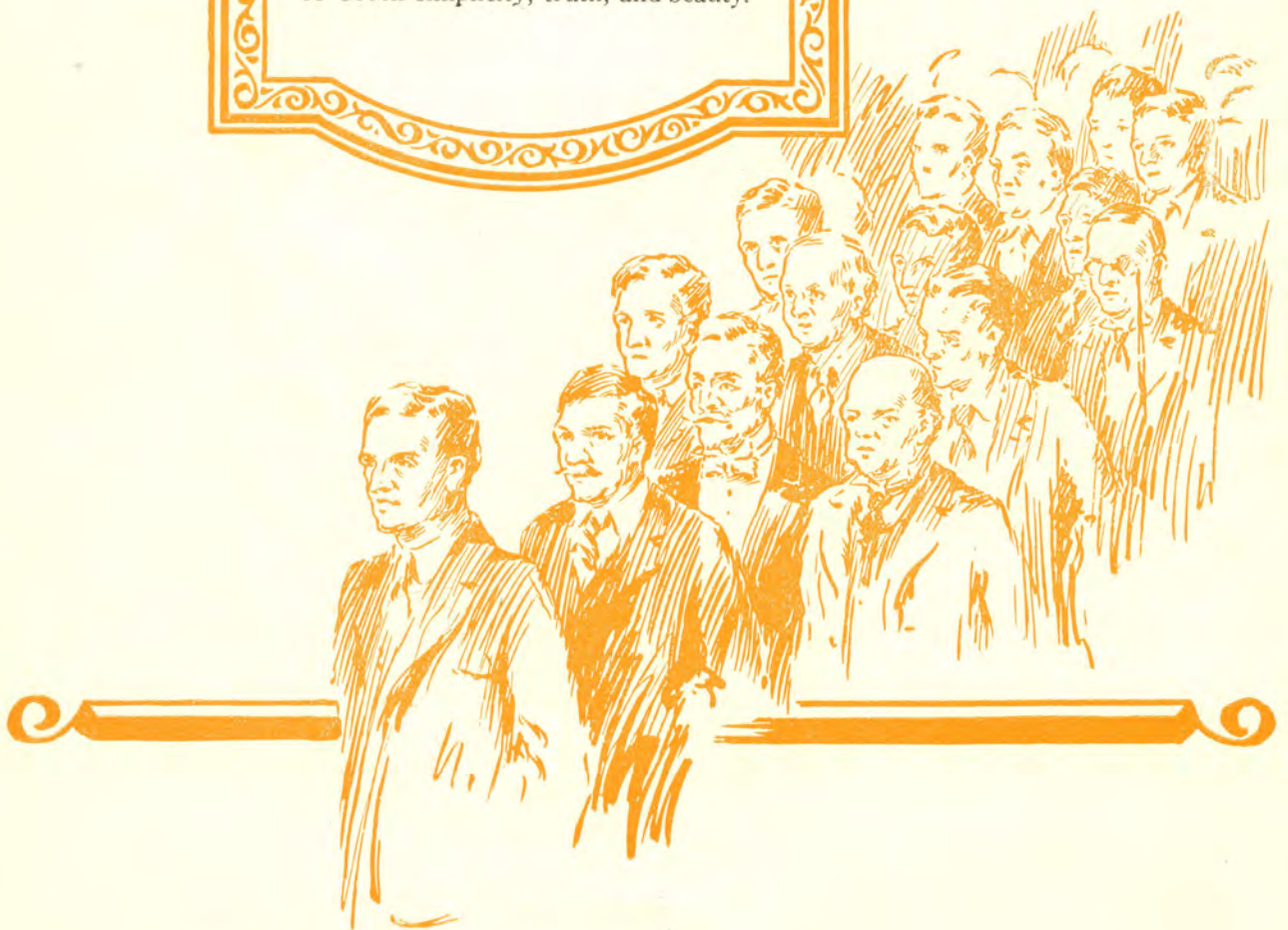
In grateful appreciation of his many years of unceasing service to Manchester High, the Class of 1930 dedicate this fifteenth volume of "Somanhis."



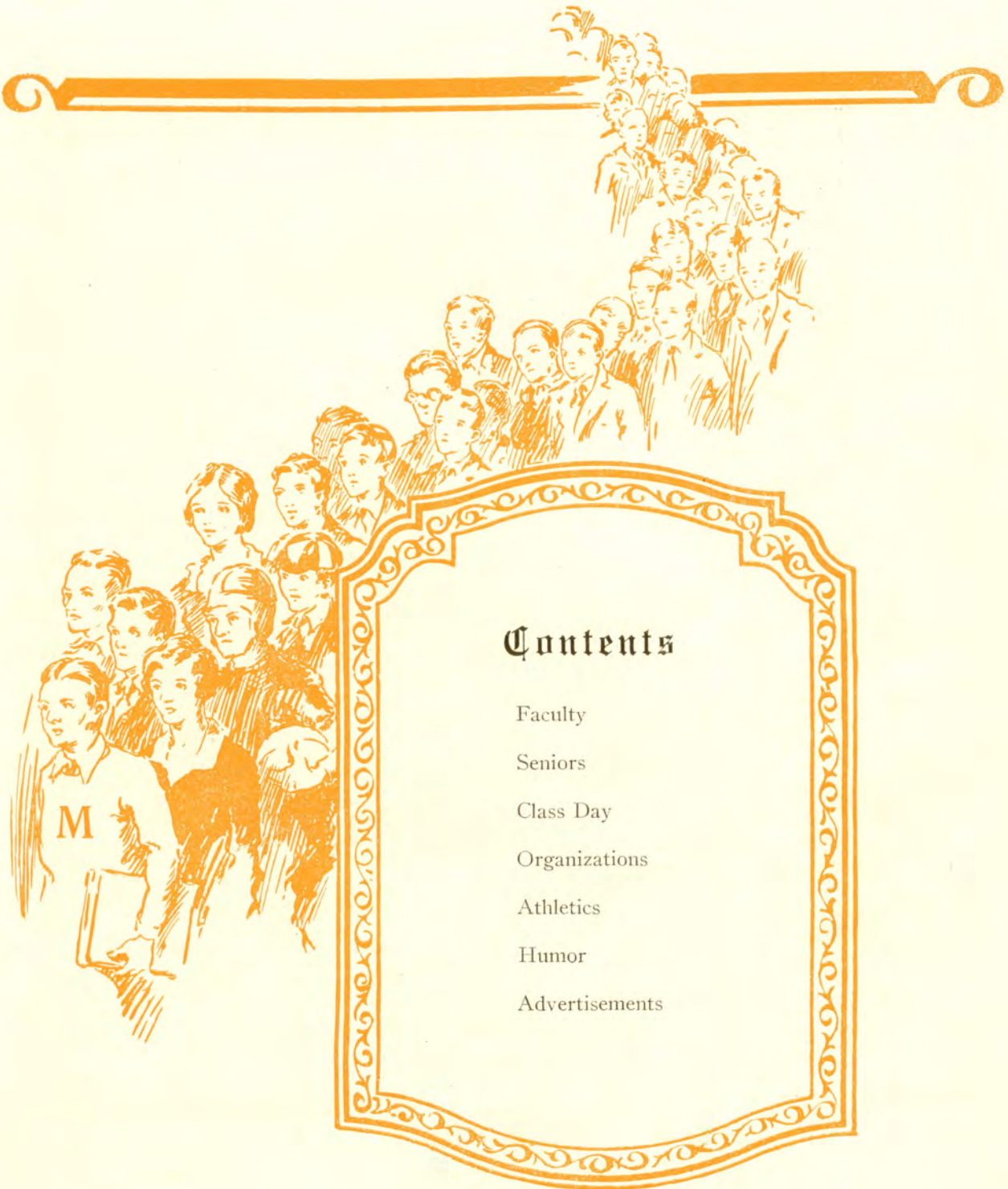
## Foreword

The memories of high school days are some of the pleasantest memories of a life-time. The ideals formed during those years are the ideals which will endure.

We have chosen for our book the Alumnus theme combined with Greek motifs, symbolical of our march through high school days and out into the world, holding fast the ideals of Greek simplicity, truth, and beauty.







## Contents

Faculty

Seniors

Class Day

Organizations

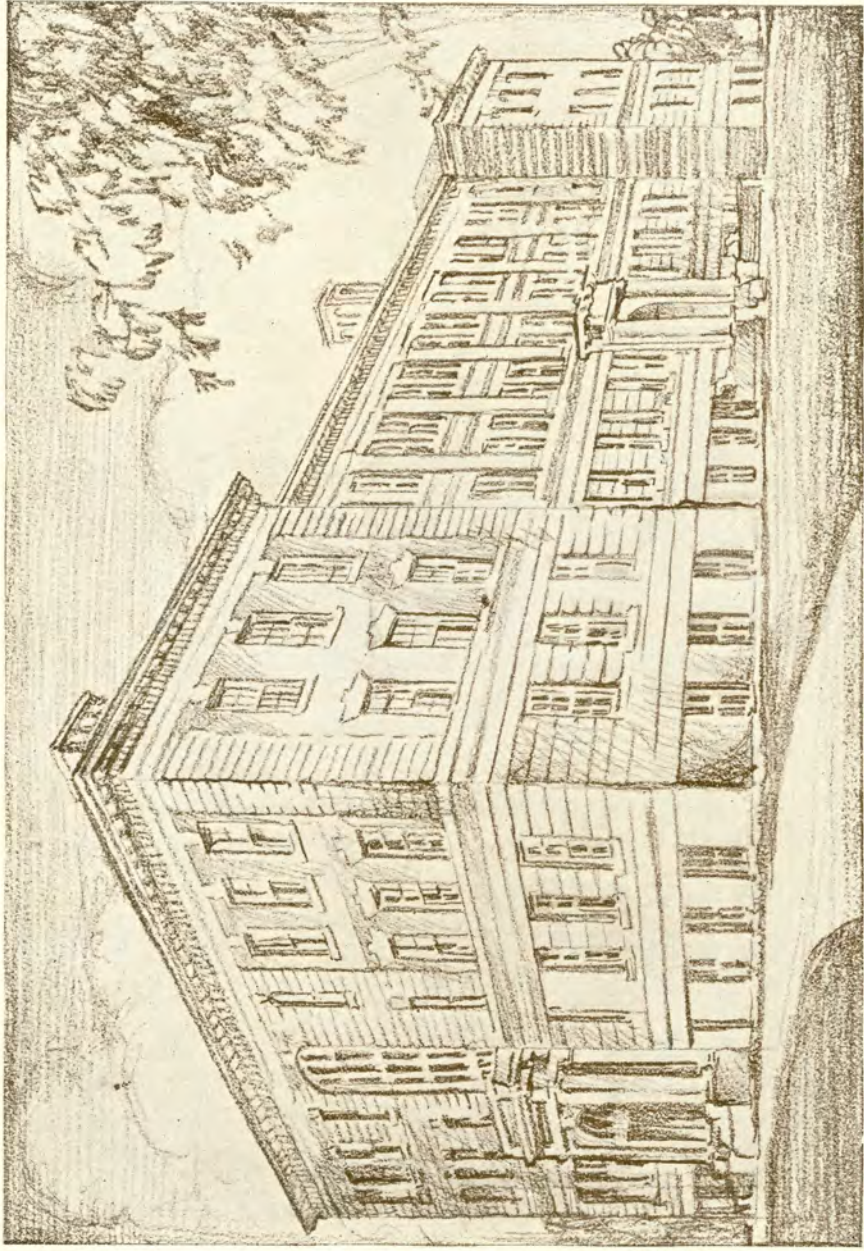
Athletics

Humor

Advertisements

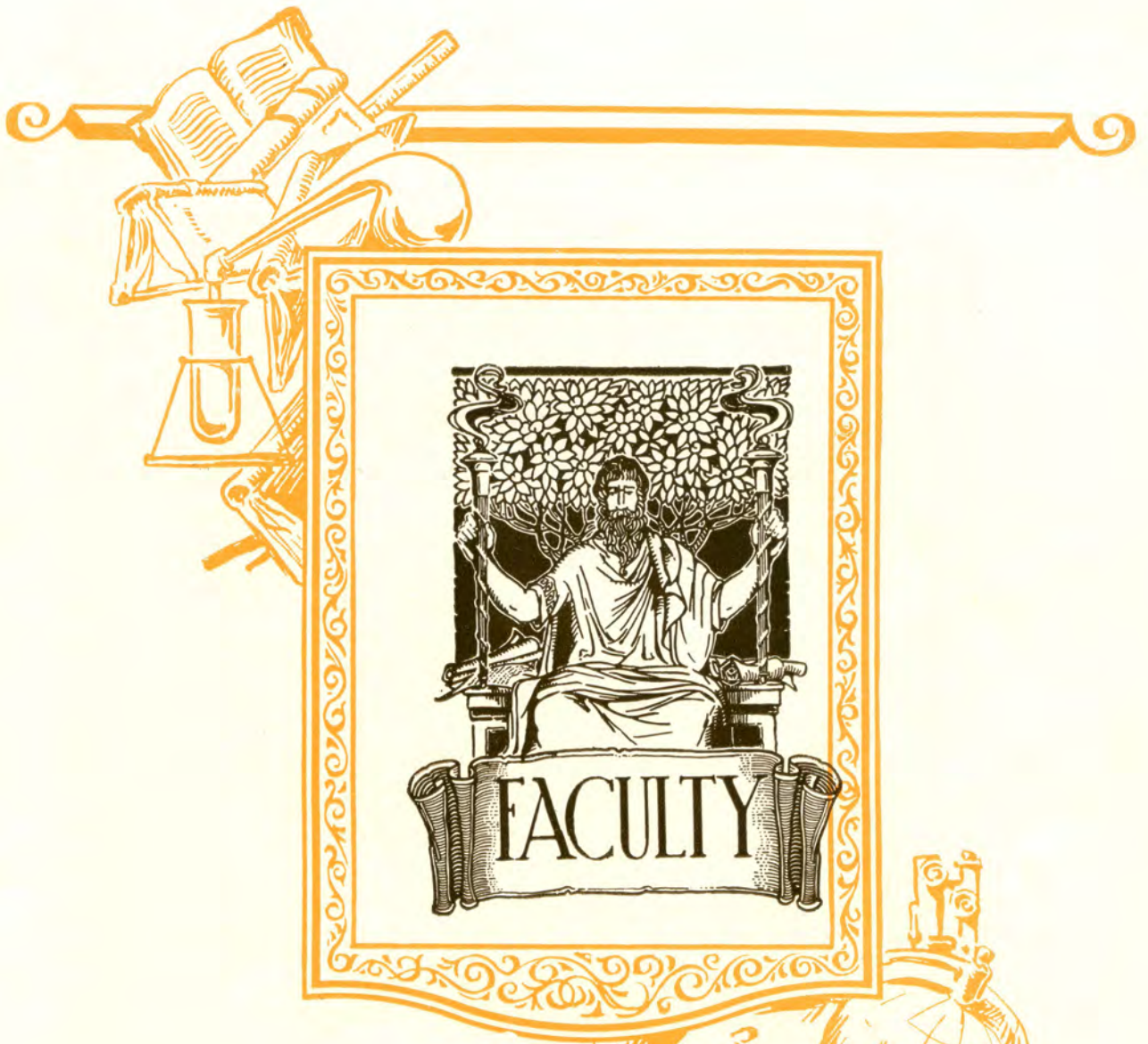


*"Still sits the schoolhouse by the road."*

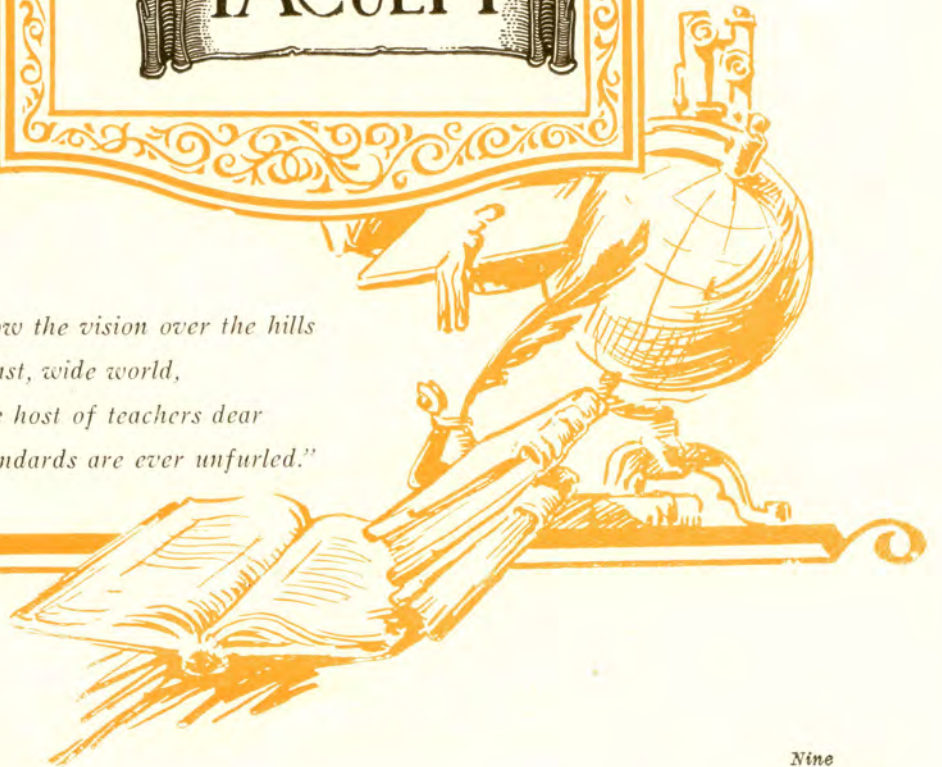


MANCHESTER HIGH SCHOOL





*"We'll follow the vision over the hills  
Into the vast, wide world,  
Led by the host of teachers dear  
Whose standards are ever unfurled."*





# Faculty Directory

Principal Clarence Paul Quimby,  
Bates, A. B., Ed. M.

Vice-principal Elizabeth L. Olson, Mt.  
Holyoke, A. B., Head of Mathematics De-  
partment.

Vice-principal Ralph W. Proctor,  
Tufts, B. S., Civics.

Edson M. Bailey, New Hampshire  
University, B. S., Business Training, and  
Commercial Law.

Mary L. Burke, College of New  
Rochelle, Ph. B., English.

Wilfred J. Clarke, New Haven Normal  
School of Gymnastics, Physical Training  
for boys.

Harriet D. Condon, Massachusetts  
School of Art, Art.

E. Marion Dorward, New England  
Conservatory of Music, Institute of Mus-  
ic Pedagogy, (Northampton), Music.

Philip L. Emery, Bates, B. S., Biology.

Helen J. Estes, Wheaton, A. B., Eng-  
lish.

Victoria H. Tait, Carthage, A. B., Eng-  
lish.

Florence B. Hopkins, Brown Univer-  
sity, A. B., Latin and English, Harvard  
University, Ed. M.

Thomas J. Kelley, Bates, A. B.,  
Science.

Francis G. Lee, Boston College, Salem  
State Normal School, A. B., L. L. B.,  
C. P. A., Bookkeeping and Commercial  
Law.

Esther MacDonald, Northwestern Uni-  
versity, A. B., English.

Mary McGuire, New Britain State Nor-  
mal, N. Y. University, B. S., Mathemat-  
ics.

Ruth L. Parker, Bates, A. B., Mathe-  
matics.

Avis C. Walsh, Wellesley, A. B., Head  
of English Department.

Esther Genevieve Nuzum, Boston Uni-  
versity, B. S. S., Typewriting and Steno-  
graphy.

Gertrude Oberempt, Brown University,  
Ph. B., Civics.

Arthur N. Potter, Brown University,  
Ph. B., University of Chicago, M. A.,  
History.

Chester L. Robinson, Colby, B. S.,  
Chemistry and Physics.

Mrs. Minnie B. Anderson, Boston Uni-  
versity, B. S., French.

Helen M. Smith, Framingham Normal  
School, Domestic Science.

Carrie B. Spafard, Wesleyan, A. B.,  
Latin.

J. Mildred Tinker, University of New  
Hampshire, B. A., English.

Eugenia Walsh, Conn. College for  
Women, A. B., French.

Charles L. Wigren, Wesleyan Univer-  
sity, A. B., Mathematics.

Agnes Howard, Boston School of  
Physical Education, Physical Training  
for girls.

Hulda J. Anderson, Plymouth Normal,  
Typewriting and Stenography.

Marion A. Case, Chandler Normal,  
Bookkeeping and Typewriting.

Dorothy J. Goodridge, Boston Univer-  
sity, B. S., Typewriting and English.

Arland Jenkins, Bates, A. B., Ancient  
History.

Geraldine McGaughan, Emerson, B. L.  
I., English.

Beulah E. Todd, Brown University,  
A. B., French and German.

Marguerite Oates, Mt. Holyoke, B. A.,  
History.





#### FACULTY

Top Row: Miss Anderson, Mr. Jenkins, Miss Ferderber, Mr. Clarke, Miss Rogers, Mr. Robinson, Miss Todd, Miss Hopkins.  
 Third Row: Miss Case, Miss Oates, Mr. Kelley, Miss Olson, Miss Tinker, Mr. Lee, Miss Parker, Mr. Emery.  
 Second Row: Miss Oberempt, Mr. Bailey, Miss Burke, Mr. Wigren, Miss Maguire, Mr. Potter, Miss Spafard, Mr. Quimby, Mr. Proctor.  
 Front Row: Miss E. Walsh, Miss Estes, Miss A. Walsh, Miss McGaughan, Miss Nuzum, Mrs. Anderson, Miss Howard, Miss Dorward, Miss MacDonald, Miss Goodrich.

#### ANCHORS UP

The ships are buildèd; now at last,  
 The sails by our own hands made fast  
 Through four young years, in courage rise,  
 Alert to sail 'neath stranger skies.

The harbor's shelter ours no more  
 Wherein white gulls of Youth's dreams soar,  
 And, rising ever, dive and wheel.  
 But now, alone, each one his keel  
 Will turn to some far, hopeful shore.

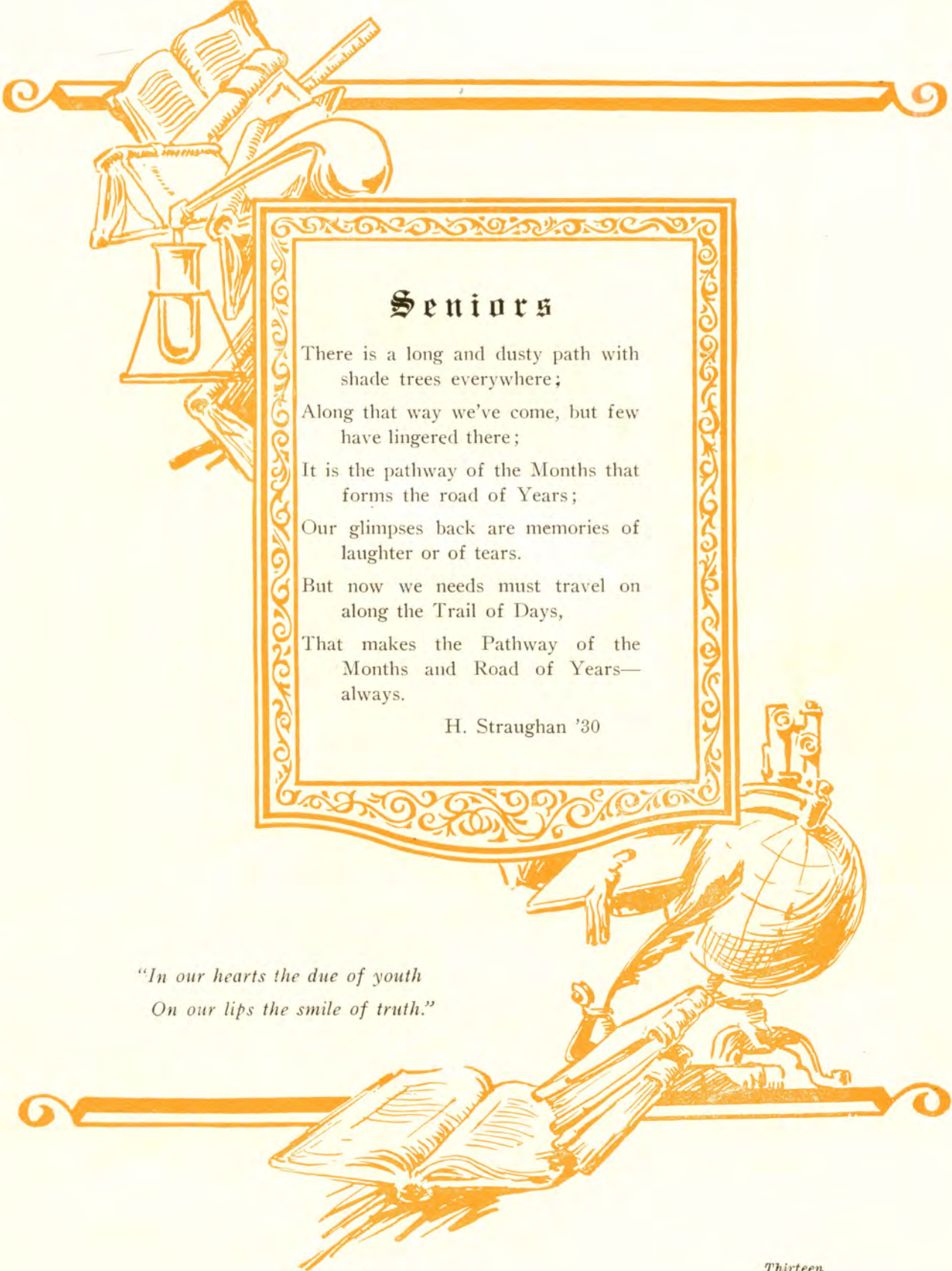
Fair winds go with us!—never night  
 So dark that not some star its light  
 May lend us, keeping still our way  
 Through stormy night and brightest day.

Patricia Moroney, '30









## Seniors

There is a long and dusty path with  
shade trees everywhere;  
Along that way we've come, but few  
have lingered there;  
It is the pathway of the Months that  
forms the road of Years;  
Our glimpses back are memories of  
laughter or of tears.  
But now we needs must travel on  
along the Trail of Days,  
That makes the Pathway of the  
Months and Road of Years—  
always.

H. Straughan '30

*"In our hearts the due of youth  
On our lips the smile of truth."*



CLASS OFFICERS



President, EDWARD HANSEN

Vice-President, HARRIET CHENEY

Secretary, BEATRICE FOGG

Treasurer, CARLE CUBBERLY

CLASS SONG

We've reached the crest of one long hill,  
A hill that took four years to mount,  
Four years of knowledge, work, and fun,  
Four years of friendship,—friends who count.

With eyes alert and head held high  
We face a future vague and dim,  
With eager hopes and youthful zest  
We join a game both hard and grim.

A game with rules of sterner stuff,  
A game that shuns the one who shirks,  
A game whose goal is fame and power,  
A goal that's won by him who marks.

If we persist and do our best,  
And work according to the code,  
We're sure to reach that cherished goal  
Which lies beyond that rough, hard road.

Olympia Martina '30

CLASS MOTTO:

*"Non nobis solum sed toti mundo nati"*

"Born Not for Ourselves Only, but for the Whole World."



CLIFFORD ANDERSON  
"SWEDE"

*"Large-brained, clear-eyed, of  
such as he  
Shall Freedom's young  
apostles be."*

Latin Club 1; Quill Club  
2; French Club 2; Algebra  
Club 3; Honor Roll 12;  
Honor Student.



EVELYN BEER "EY"

*"I am not of that feather to  
shake off  
My friend when he must  
need me."*

Leaders Class 3, 4; Girl  
Reserves 4; Senior Basket-  
ball 4; Glee Club 2; Fresh-  
man Dramatic Club 1; Quill  
Club 2; Honor Roll 11.

INEZ ANDERSON "SWEDE"

*"She dances such a way,  
No sun upon an Easter Day  
Is half so fine a sight."*

Vice-President Class 1;  
Student Council 1; Glee Club  
2, 3, 4; Quill Club 2; Junior  
Prom. Committee 3; Soph.  
Class Social Committee 2;  
Honor Roll 5.



WINSTON BENDALL  
"DICKER"

*"His dancing feet and spark-  
ling smile  
Would any damsel fair be-  
guile."*

Glee Club 1, 2, 3, 4; Band  
1, 2, 3, 4; Orchestra 1, 2, 3,  
4; Dramatic Club 3, 4; Presi-  
dent Dramatic Club 4; Assis-  
tant Manager Swimming 3;  
Manager Swimming 4; Stud-  
ent Council 4; Class Presi-  
dent 2, Annual Play 3, 4;  
Hi-Y 3, 4; Group Leader 4.

FRANK AVIGNONE

*"Modesty becomes a young  
man."*

Honor Roll 5.



DOROTHY BOODY "DOT"

*"Her air, her manners, all  
who saw admired;  
Courteous, though coy, and  
gentle, though retired."*

Argonaut Club 1; Latin  
Club 1; Honor Roll 8.

MATTHEW BATSON, Jr.  
"MATT"

*"A pleasant youth, most  
genial, frank;  
A character of highest rank."*

Glee Club 2, 3; Orchestra  
3, 4; Band 4; Algebra Club  
3.



HERBERT BRANDT "HOB"

*"A thing worth having is  
never obtained without  
hard work."*

Honor Roll 10.

MARGARET BEATTIE  
"PEGGY"

*"But if I'm content with a  
little,  
Enough is as good as a  
feast."*

Honor Roll 2; French Club  
2; Glee Club 3.



MICHAEL BUCCINO  
"MIKE"

*"Then he will talk! Good  
gods, how he will talk."*

Rifle Club 1; Sock and  
Buskin 4; Annual Play 4.



ELIZABETH BULLA  
"BETTY"

*"Every day she does her work,  
Seeking where a task may lurk."*

French Club 2, 3; Glee Club 3; Honor Roll 8.



MORGAN CAMPBELL  
"SOUP"

*"A full, rich nature free to trust,  
Truthful and always frankly just."*

Honor Roll 1.

ELENA BURR "EL"

*"I'll be merry and free,  
I'll be sad for nobody."*

Argonaut Club 1; Latin Club 1, 2; Quill Club 2; French Club 4; Glee Club 4; Sock and Buskin 3, 4; Cast of "Lucky Break" 4; Honor Roll 14.



BERTHA CARLSON  
"BERT"

*"Forward and frolic glee was there,  
The will to do, the soul to dare."*

Glee Club 2, 3, 4; Quill Club 2; Junior Prom. Committee 3; Washington Group Leader 4; Cheer Leader 3, 4; Soph. Class Social Committee 2.

HORACE BURR "CHESTY"

*"Ability wins us the esteem  
of the true men."*

Latin Club 1, 2; Torch Club 1, Rifle Club 1; Student Council 1; Quill Club 2; Camera Club 3; Glee Club 3, 4; Honor Roll 22; Honor Student.



ELIZABETH CARLSON  
"BETTY"

*"She is pretty to walk with,  
and witty to talk with,  
and pleasant, too, to think on."*

Quill Club 2; Sock and Buskin 4; French Club 2, 3, 4; Glee Club 2, 3, 4; Junior Prom. Committee 3; Class Vice-President 2; Somanhis Staff 4; Honor Roll 22; Honor Student.

CHARLES BYCHOLSKI  
"WHITEY"

*"He was wont to speak plain,  
and to the purpose."*

Baseball 2, 3, 4; Basketball 2, 3.



HARRIET CHENEY  
"DOLLY"

*"If to her share some female errors fall,  
Look on her face, and you'll forget them all."*

Argonaut Club 1; Latin Club 1; Leaders Class 3, 4; French Club 4; Sock and Buskin 4; Cast of "Lucky Break" 4; Group Leader 4; Class Vice-President 4; Honor Roll 5.

GERTRUDE CAMPBELL  
"COOKIE"

*"An ounce of mirth is worth  
a pound of sorrow."*

Latin Club 2; Quill Club 2; Argonaut Club 1; French Club 3, 4; Glee Club 2, 3, 4; Junior Prom. Committee 3; Girl Reserves 4; Sock and Buskin 3, 4; Vice-President Sock and Buskin 4; Annual Play 4; Honor Roll 8.



MINNIE CHURCH "MIN"

*"Say not that she did well or ill,  
Only, 'She did her best.'"*

Glee Club 4; Honor Roll 1.



JAMES COLE

"SWEETHEART"

*"It is a great thing to know  
the season of speech and  
the season of silence."*

Quill Club 2; Latin Club  
1; Student Council 3; Group  
Leader 4; Hi-Y 4; Honor  
Roll 10.



ERNEST DOWD "SKIPPER"

*"Who'er excels in what we  
prize*

*Appears a hero in our eyes."*

Baseball 1, 2, 3, 4; Foot-  
ball 1, 2, 3, 4; Track 3, 4;  
Basketball 2, 3, 4; Captain Bas-  
ketball 3; Captain Basket-  
ball 4; Athletics Editor So-  
manhis 4.



CARLE CUBBERLY

"DUBBER"

*"But still his tongue ran on,  
the less  
Of weight it bore, with  
greater speed."*

Band 1, 2, 3, 4; Hi-Y 4;  
Debating Club 2, 3, 4; Presi-  
dent Debating Club 4; Class  
Treasurer 4; Student Council  
3; Sock and Buskin 3, 4;  
Cast of "Pals First" 3;  
"Lucky Break" 4; "Tweedles"  
4; Quill Club 2; Sec. of Sock  
and Buskin 4; Track Mana-  
ger 4; Somanhis Circulation  
Manager 4; Honor Roll 1.



HAROLD DWYER

*"Zealous, yet modest,  
Patient of toil."*

Student Council 1.



RAYMOND DEY

"RAY"

*"Quality not quantity is my  
measure."*

Honor Roll 14.



FRED EDWARDS

"FREDDIE"

*"Music is the universal lan-  
guage of all mankind."*

Orchestra 1, 2, 3, 4; Glee  
Club 1, 2, 3, 4; Band 3, 4;  
Concert Master Orchestra 4;  
President Glee Club 4; Stud-  
ent Council 2; Honor Roll 1.



LESLIE DOTCHIN

"TAFFY"

*"A youth to whom was given  
So much of earth, so much  
of heaven."*

Glee Club 2; French Club  
2; Honor Roll 6.



EDNA ENGLAND "EDDIE"

*"Her virtue and the con-  
science of her worth,  
That would be wooed,  
and not unsought be  
won."*

Argonaut Club 1; Quill  
Club 2; Honor Roll +



CLARENCE DOWD

"BABE"

*"For he was studious—of his  
ease."*



LENA FARR

"LENE"

*"Within the midnight of her  
hair,  
Half hidden in its deepest  
depths."*

Glee Club 3, 4; French  
Club 4.





BEATRICE FOGG  
"BEATIE"

*"I will have my own way in  
everything."*

Argonaut Club 1, Latin  
Club 1; Quill Club 2; French  
Club 3; Group Leader 4;  
Student Council 4; Senior  
Class Secretary 4; Honor  
Roll 15; Honor Student.



WILLIAM GEORGE "BILL"

*"Brawny of muscle, bright of  
eye,*

*Happy as the birds on  
high."*

Football 3, 4; Manager  
Baseball 4; Captain Hockey  
4; Hi-Y 4; Torch Club 1;  
Honor Roll 1.

LOVINA FOOTE "LOVEY"

*"Pour the full tide of  
eloquence along,  
Serenely pure, and yet  
divinely strong."*

Latin Club 1; French Club  
3; Somanhis Events Staff 4;  
Exchange Editor 4; Honor  
Roll 22; Honor Student.



LOUIS GILLMAN

*"He freshly and cheerfully  
asked him how a man  
should kill time."*

CATHERINE FOSTER  
"FRESH"

*"And what's impossible can't  
be  
And never, never comes to  
pass."*

Glee Club 3, 4; Argonaut  
Club 1; Orchestra 2, 3, 4;  
Quill Club 2; French Club 3,  
4; Latin Club 1; Honor Roll  
15.



WILLIAM GLENNEY

"CURLY"

*"Who doth ambition shun  
And loves to live in the  
sun."*

Torch Club 1; Hi-Y 4;  
Band 2, 3; Manager Football  
4; Latin Club 1, 2; Rifle  
Club 1; Honor Roll 2.

DOROTHY FRINK "DOT"

*"Speech is great, but silence  
is greater."*

Glee Club 4; German Club  
4.



JAMES GORMAN "JIM"

*"Simple in thy elegance,  
plain in thy neatness."*

LENA GATTI "LENE"

*"I loved you for your loving  
ways,  
The ways that many did not  
know."*

English Club 2; French  
Club 2; Honor Roll 7.



JANE GRANT

"GRANTLAND"

*"See where she comes,  
apparell'd like the spring."*

Honor Roll 1.



ESTELLE GRYK "STELL"

*"Be calm in arguing; for  
fierceness makes*

*Error a fault, and truth  
discourtesy."*

English Club 1, 2, 3; Latin  
Club 1, 2; Girl Reserves 4;  
Leaders Class 3, 4; Girls  
Glee Club 2, 3, 4; Honor  
Roll 21; Honor Student.



EDWARD HANSEN "ED"

*"I now say what I think."*

President of Hi-Y 4; Athle-  
tic Manager of Somanhis 4;  
Sock and Buskin 4; German  
Club 4; Student Council 2;  
Football 3; President of  
Senior Class 4; Honor Roll 1.

ORA HADDEN "ODIE"

*"Her merry smile and witty  
tongue,*

*Brought a smile to everyone."*

French Club 3; Honor Roll  
11.



ANNA HARABURDA "ANN"

*"In Folly's cup still laughs  
the bubble, Joy."*

Freshman Dramatic Club 1;  
Senior Basketball 4; Honor  
Roll 1.

OLGA HAEFS "RED"

*"Her heart is like a garden  
fair*

*Where many pleasant  
blossoms grow."*

Glee Club 2, 3, 4; Girl  
Reserves 4; German Club 4.



LILLIAN HART "LIL"

*"Much is she worth and even  
more is made of her."*

Leaders Class 1, 2, 3, 4;  
Glee Club 1; Girl Reserves 4.  
Cheer Leader 4; Senior  
Basketball 4; Cast of "Tweed-  
les" 4; Secretary Girl Re-  
serves. 4

BEATRICE HAND "BEAT"

*"Yet in herself she dwelleth  
not;*

*No simplest duty is forgot."*

Girl Reserves 4; Glee Club  
3, 4.



CHARLES HECK "BLINK"

*"That inexhaustible good-na-  
ture, which is itself the  
most precious gift of  
Heaven.*

German Club 4; Hi-Y 4;  
Student Council 3; Home-  
room Chairman 3; Algebra  
Club 3; Honor Roll 5.

CLAYTON HANSEN

"CLAYT"

*"He laughed and threw his  
time away,*

*For life to him was to be  
gay."*

Class President 1, Student  
Council 1, 2.



MARGARET HENRY

"PEG"

*"On the tongue of such a one  
they shed honeyed dew,  
And from her lips drop  
gentle words."*

Glee Club 2, 3, 4; German  
Club 4; Cast of "Tweedles"  
4.



LORNA HILLS "HILLSIE"

*"For she was just the quiet kind*

*Whose natures never vary."*

French Club 4; Honor Roll 4.



HELEN HUEBNER

*"Most friendship is feigning."*

Glee Club 2, 3, 4; Quill Club 2; Girl Reserves 4; Honor Roll 2.

MARION HOLMES

*"Genteel in personage, Conduct and equipage."*

Sock and Buskin 3, 4.



SHERWOOD HUMPHRIES "HUMP"

*"There is no substitute for thorough-going, ardent, and sincere earnestness."*

Sock and Buskin 4; Honor Roll 12.

VERA HOTCHKISS "VE"

*"Her voice was ever soft, Gentle, and low; an excellent thing in woman."*

Quill Club 2; Glee Club 3, 4; French Club 2, 3, 4; Honor Roll 15; Honor Student.



LYDIA HUTCHINSON "LYD"

*"For her heart was in her work, and the heart giveth grace unto every Art."*

English Club 1; Glee Club 2

RUTH HOWE "RUTHIE"

*"As the yellow gold is tried in fire, so the faith of friendship must be seen in adversity."*

Argonaut Club 1; Quill Club 2; French Club 4.



MILDRED HUTCHINSON "MIL"

*"The readiness of doing doth express, no other but the doer's willingness."*

Glee Club 3, 4.

HARRY HOWLAND "PEE-WEE"

*"I am not in the roll of common men."*

Honor Roll 18, Honor Student; Hi-Y 3, 4; Secretary and Treasurer 4; Sock and Buskin 4; Cast of "Lucky Break" 4; Orchestra 1, 2, 3; Somanhis Staff 4; Jokes Editor 4.



LYLIAN HUTT "LINIE"

*"Above our life we love a steadfast friend."*

Glee Club 3; Quill Club 2; French Club 3, 4; Latin Club 1; German Club 4; Honor Roll 8.



SARAH IRWIN "SADIE"

*"Devout, yet cheerful; pious, not austere; To others lenient, to herself sincere."*

Argonaut Club 1; Quill Club 2; French Club 2, 3, 4; Honor Roll 10; Honor Student.



MARGARET JOHNSON "PEG"

*"For men may come and men may go, but I go on forever."*

Argonaut Club 1; French Club 2; Latin Club 1; Glee Club 1; Honor Roll 7.

SAMUEL JEWELL "SAM"

*"My tongue within my lips I reign."*



RAYMOND JOHNSON "TITUS"

*"A town that boasts of inhabitants like me Can have no lack of good society."*

Latin 1, 2; Quill Club 2; Band 1; Hi-Y 3, 4; Sock and Buskin 4; Group Leader 4; Honor Roll 3.

EARL JOHNSON "RED"

*"A man, he seems, of cheerful yesterdays, and confident tomorrows."*

Honor Roll 5.



ROY JOHNSON

*"Merriment in ev'ry look Care and worry him forsook."*

Glee Club 2; Orchestra 2, 3, 4; Junior Response to Ivy Oration 3; Class President 3; Junior Prom. Committee 3; Honor Roll 3.

LILLIAN JOHNSON "LIL"

*"Of manners gentle, of affections mild."*

Quill Club 2; French Club 4; Honor Roll 5.



AGNES JORDT "AG"

*"A very merry, dancing, drinking, laughing, quaffing, and unthinking time."*

Glee Club 2, 3; Quill Club 2; Cast of "Sauce for the Goslings" and "Tweedles"

LOUISE JOHNSON "LOU"

*"Character is a perfectly educated will."*

French Club 2, 3; Quill Club 2; Quotation Committee 4; Glee Club 4; Honor Roll 16; Honor Student.



ELIZABETH KEAN "BETTY"

*"Her face, so lovely, yet so arch, so full of mirth, The overflowings of an innocent heart."*

Girl Reserves 4.



ANNA KELLY "KELLY"

*"Defer not till tomorrow to be wise."*

Honor Roll 1; Girl Reserves 4.



ARTHUR L'HEUREUX

"ART"

*"Smiling always, with a never fading serenity of countenance."*

Honor Roll 4; Track 4.

EMILY KITTEL "EM"

*"What's the use of worrying,"*

Glee Club 2, 3, 4.



ROBERT LEWIE "FAT"

*"Safety lies in a middle course."*

SOPHIE KUPCHUNOS

*"Concealed talent brings little reputation."*



ELIZABETH LITHWINSKI

"LIZ"

*"My thoughts and my conduct are my own."*

Argonaut Club 1; Prom. Committee 3; Orchestra 3, 4; Accompanist Glee Clubs 3, 4.

HOMER LANE

*"When tillage begins, other arts follow.*

*The farmers, therefore, are the founders of human civilization."*

Track 4.



FRANCIS LUCAS "FRAN"

*"Each mind has its own method."*

Honor Roll 5.

BEATRICE LAUFER

"BEADIE"

*"The most completely lost of all days is that on which one has not laughed."*

Freshman Dramatic Club 1, Quill Club 2; Glee Club 2, 3, 4; French Club 2, 3; Orchestra 3, 4; Debating 3, 4; Triangular Debate 4; Honor Roll 16; Honor Student.



THEODORE LUPIEN "TED"

*"The glory of young men is in their strength."*

Baseball 3, 4; Football 4; Captain Football 4; Hockey 4; French Club 3; Treasurer French Club 3; Hi-Y 2; Honor Roll 3.



ELLEN LYONS "CISSY"

*"Laughter, mirth, always on hand*

*Ready for her to command."*

Glee Club 2, 3, 4; Secretary Glee Club 3.



EUNICE McADAM

"EUNNIE"

*"Sensitive, swift to resent, but as swift in atoning for error."*

Glee Club 4; English Club 1; Honor Roll 2.

RALPH MAHER "PORKY"

*"A merrier man, within the limit of becoming mirth, I never spent an hour's talk withal."*



ROBERT McCOMB "BOB"

*"He likes himself a little bit. Why not? He always makes a hit."*

Latin Club 1; French Club 2; Hi-Y 3; Student Council 1, 2; Honor Roll 10.

ROGER MARCHAM

"RAJAH"

*"Young fellows will be young fellows."*



MAURICE McKEEVER

"MAC"

*"Nothing great was ever achieved without enthusiasm."*

Glee Club 2, 3, 4; Band 2, 3, 4; Band Leader 4; Cheer Leader 4; Debating Team 4; Sock and Buskin 4; Junior Prom. Committee 3; Somanhis Cartoonist 1, 2, 3, 4.

OLYMPIA MARTINA

"LIMPIE"

*"True wit is nature to advantage drest,*

*What oft was thought, but ne'er so well exprast."*

Student Council 1; Orchestra 1, 2, 3; Glee Club 4; Freshman Dramatic Club 1; Quill Club 2; French Club 3; Honor Roll 14; Honor Student.



THOMAS McKINNEY

"TOM"

*"Easy, obliging, not much speed,*

*His is a cheerful, kindly creed."*

Orchestra 3, 4.

JOSEPH MASSARO "JOE"

*"He dreams of a land of no principal's rules,*

*Where the wisest are just as good as the fools."*

Honor Roll 6.



MARION MODIN "MIM"

*"A cheerful temper joined with innocence will make beauty attractive, knowledge delightful, and wit good-natured."*

English Club 1; French Club 2; Honor Roll 16; Honor Student.



JAMES MORIARTY "JAY"

*"The cautious seldom err."*

Latin Club 1.



DORIS MULDOON "DOT"  
*"The fairest garden in her looks*

*And in her mind the wisest books."*

Argonaut Club 1; Latin Club 1; Quill Club 2; Glee Club 2, 3; Leaders Class 2, 3, 4; French Club 3, 4; Sock and Buskin 4; Treasurer of Sock and Buskin 4; Cast of "A Lucky Break" 4; German Club 4; Vice-President German Club 4; Class Vice-President 3; Junior Prom. Committee 3; Honor Roll 22; Honor Student, Salutatorian.

MARCUS MORIARTY

"SQUINT"

*"Love thou and if thy love be deep as mine, thou wilt not laugh at poets."*

Baseball 2, 3, 4; Football 2, 3, 4; Basketball 3, 4.



LINCOLN MURPHY "LINK"

*"Sound the trumpets! Roll the drums!*

*See! The merry sportsman comes!"*

Football 3, 4; Track 2, 3, 4; Manager Basketball 4; Student Council 3, 4; Hi-Y 4; Torch Club 1.

PATRICIA MORONEY

"PAT"

*"Intellect can raise From airy words alone, a pile of praise."*

Honor Roll 6.



MILDRED NEILL "MILLY"

*"I'm the sweetest sound in orchestra heard, yet in orchestra never have been."*

English Club 1; Quill Club 2; Glee Club 2, 3, 4.

WALTER MOZZER

"VUDGE"

*"Reserved, not haughty; calm, not sad, A thoughtful, worthy, quiet lad."*

Track 3, 4; Football 4; Honor Roll 4.



ELSIE NEWCOMB "EL"

*"The finest eloquence is that which gets things done."*

Glee Club 2; French Club 4; German Club 4; Honor Roll 9; Honor Student.

ALEXANDER MOZZER

"ALEX"

*"Say he is shy with much reserve But never say he lacks good nerve."*

Rifle Club 1; Track Team 4



BRUNO NICOLA "NICK"

*"I would do what I please, and doing what I pleased, I shall have had my own will."*

Track 2, 3, 4; Football 3; Basketball 3, 4.



JEROME O'BRIEN "HORSE"

*"His dancing did charm the ladies and arouse envy in the men."*

Argonaut Club 1, 2; German Club 4; French Club 4.



RICHARD REICHENBACK  
"DICK"

*"All his faults are such that one loves him still the better."*

Somanhis 2, 3, 4; German Club 4.

KENNETH PERRETT

"KENNY"

*"Blushing is the color of virtue."*

Hi-Y 4.



ELIZABETH RICH "BETTY"

*"Whence is thy learning?  
Hath thy toil  
O'er books consumed the  
midnight oil?"*

French Club 4; Honor Roll 21; Honor Student.

ROSE PIESCİK

*"Night after night  
She sat and bleared her  
eyes with books."*

Orchestra 2, 3, 4; Honor Roll 15; Honor Student.



ALICE ROACH "AL"

*"From which all heavenly  
virtues shoot"  
"Humility, that low, sweet  
root"*

Quill Club 2; Girl Reserves 4.

ALFRED PUCCI "PUCH"

*"Our youth we can have but  
to-day;*

*We may always find time to  
grow old."*

Track 4.



EDNA ROHAN "EDDIE"

*"Bad language or abuse  
I never, never use,  
Whatever the emergency."*

Glee Club 2, 3, 4; Quill Club 2.

AGNES PONGRATZ "AG"

*"I find earth not grey but  
rosy,*

*Heaven not grim but fair of  
hue."*

Girl Reserves 4; Leaders Class 4; Glee Club 2, 3, 4; German Club 4.



THOMAS ROLLASON "TOM"

*"Nochere so busy a man as  
he there was."*

Band 2, 3, 4; Orchestra 2, 3, 4; Ensemble 4; Honor Roll 10.



ELSIE ROTH "SUNSHINE"

*"Life is a jest and all things show it;*

*I thought so once and now I know it."*

Student Council 2; Honor Roll 3.



WALTER SNOW "WALT"

*"Diligence is the mother of good fortune."*

Band 2, 3, 4; Glee Club 2; Orchestra 2; English Club 1; Quill Club 2; Class Football; Basketball, and Baseball 1, 2, 3, 4; Honor Roll 1.

ELEANOR RUNDE "RUNDE"

*"Friend to the friendless."*

Leaders Class 2, 3, 4; Cheer Leader 4; Senior Basketball 4; Girl Reserves 4.



DOROTHY STEVENSON

"DOT"

*"Acquaintances I would have, but when 't depends, not on the number, but the choice of friends."*

English Club 1; Quill Club 2; Girl Reserves 4; Glee Club 4.

FRANK SCARLATO "SCAR"

*"Strong in will to strive, to seek, to find."*

Freshman Hi-Y 1; Rifle Club 1; Honor Roll 1; Assistant Swimming Manager 3; Football 4; Student Council 4; Inter-Class Football and Swimming 4; Track 2, 3, 4; Hi-Y 4; Captain Track 4.



HAZELTINE STRAUGHAN

"HAZZIE"

*"A merry heart maketh a cheerful countenance."*

Glee Club 4; Girl Reserves 4.

FRANK SCHEIBENPFLUG

*"Reason or none."*

Football 4; Honor Roll 2.



FRANCES STRICKLAND

"FRAN"

*"On with the dance. Let joy be unconfined."*

Argonaut Club 1; French Club 2; Quill Club 2; Glee Club 3; Group Leader 4; Honor Roll 21; Honor Student.

DOROTHY SIGGINS "DOT"

*"There is likewise a reward for faithful silence."*



FRANCIS SULLIVAN

"SULLY"

*"Smiling and agreeing he Abounds in generosity."*

Glee Club 1, 2; Sock and Buskin 4; Orchestra 1, 2, 3, 4; Cast of "A Lucky Break" 4; Chairman Junior Prom. Music Committee 3; H. S. Ensemble 4.



MARY TIERNEY

*"You are as welcome as the flowers in May."*

Freshman Dramatic Club 1; Leaders Class 2, 3, 4; Glee Club 2, 3, 4; Treasurer Girl Reserves 4; Junior Class Secretary 3; Junior Prom. Committee 3; Senior Girls Basketball 4.



HORACE WETHERELL

*"HAWKY"*

*"We are charmed by neatness of person; let not thy hair be out of place."*

MURIEL TOMLINSON

*"MOOTS"*

*"Whose little body lodged a mighty mind."*

Argonaut Club 1; Latin Club 1; Quill Club 2; Class Secretary 2; Leaders Class 2, 3, 4; Student Council 3; Junior Prom. Committee 3; Soph. Class Social Committee 2; Inter-Class Debate 3; Somanhis Events Staff 4; Editor-in-Chief of Somanhis 4; French Club 3, 4; Senior Girls Basketball 4; Honor Roll 22; Honor Student; Valedictorian.



ADELA YAKITIS *"DEL"*

*"Of Manners gentle, of affections mild,*

*In Wit a man; Simplicity a child."*

NELLIE WAICKOWSKI

*"NELL"*

*"All must be earnest in a world like ours."*



LENA YULYES *"LENE"*

*"Speech is silver, but silence is golden."*

Argonaut Club 1; French Club 2; Honor Roll 12; Honor Student.

ELIZABETH WASKIEWICH

*"LIZZIE"*

*"Her art was striking, resistless, and grand."*

Glee Club 2, 3, 4; Quill Club 2; French Club 3; Sock and Buskin 2; Leaders Class 3, 4; Art Editor Somanhis 4; Art Chairman of Junior Prom. 3; Senior Basketball Team 4; Girl Reserves 4; Honor Roll 3.



MARY ZOKITES

*"Gentle of speech, beneficent of mind."*

Honor Roll 14.

REGINALD WEST

*"REGGIE"*

*"He is one that will not plead that cause wherein his tongue must be confuted by his conscience."*

Band 2, 3, 4; Glee Club 2, 3; Orchestra 3, 4; Varsity Football 4; Class Football 2, 3; Class Baseball 1, 2, 3; Class Basketball 1, 2, 3, 4; President Band 3, 4; Honor Roll 1.



WILLIAM COURTNEY

*"BILL"*

*"On the field or in the school,*

*He always kept the given rule."*

Torch Club 1, Basketball 1 3, 4; Football 3, 4; Latin Club 1.



## Who's Who in 1930

Best Actor .....Carle Cubberly	Class Procrastinator .....Anna Kelly
Best Actress .....Elizabeth Carlson	Quietest Boy .....James Moriarty
Best All-round Boy .....Lincoln Murphey	Quietest Girl .....Lorna Hills
Best All-round Girl .....Evelyn Beer	Class Shiek .....Winston Bendall
Best Athlete, Boy .....Ernest Dowd	Class Vamp .....Edna Rohan
Best Athlete, Girl .....Lillian Hart	Most Likely to Succeed, Boy Horace Burr
Class Baby .....Elena Burr	Most Likely to Succeed, Girl Muriel Tomlinson
Cutest Boy .....Harry Howland	Most Talkative Boy ..Maurice McKeever
Cutest Girl .....Edna England	Most Talkative Girl ....Dorothy Stevenson
Class Couples M. Tierney & F. Sullivan M. Muldoon & L. Murphey	Most Studious Boy .....Horace Burr
Best Dancer, Boy .....Jerome O'Brien	Most Studious Girl .....Muriel Tomlinson
Best Dancer, Girl .....Harriet Cheney	Vainest Boy .....Robert McComb
Best Debater, Boy .....Carle Cubberly	Vainest Girl .....Beatrice Laufer
Best Debater, Girl .....Beatrice Laufer	Best Student, Boy .....Horace Burr
Done Most for School, Boy Ernest Dowd	Best Student, Girl .....Muriel Tomlinson
Done Most for School, Girl Muriel Tomlinson	Class Woman Hater .....Clarence Dowd
Done School Most .....Agnes Jordt	Class Man Hater .....Lena Yulyes
Best Arguer, Boy .....Carle Cubberly	Most Cheerful Boy .....Carle Cubberly
Best Arguer, Girl .....Beatrice Laufer	Most Cheerful Girl .....Elizabeth Carlson
Most Drag, Boy .....William George	Biggest Line Boy .....Maurice McKeever
Most Drag, Girl .....Olympia Martina	Biggest Line Girl ....Dorothy Stevenson
Best-Dressed Boy .....Winston Bendall	Best Mannered Boy ....Winston Bendall
Best-Dressed Girl .....Harriet Cheney	Best Mannered Girl .....Harriet Cheney
Best-Looking Boy .....Herbert Brandt	Most Sincere Boy .....Harold Dwyer
Best-Looking Girl .....Harriet Cheney	Most Sincere Girl .....Elizabeth Rich
Most Musical Boy ....Maurice McKeever	Wittiest Girl .....Olympia Martina
Most Musical Girl .....Mildred Neill	Wittiest Boy .....Raymond Johnson
Best Natured Boy .....Charles Heck	Most Popular Boy .....Lincoln Murphey
Best Natured Girl .....Elizabeth Carlson	Most Popular Girl .....Harriet Cheney

### OUR CLASS!

*Here's that she always may be in the right!  
Here's that her standards may ever be white!  
Here's that whatever our future may be,  
Steady and fearlessly God-like may be—*

OUR CLASS!





NOW



TWO-LIP ROW



THEN



"OH, OH!"



"WELL?"



WHAT, NO MEN?



STATION CPQ



SEA TURNS



PEAT & REPEAT



"AW, GEE!"

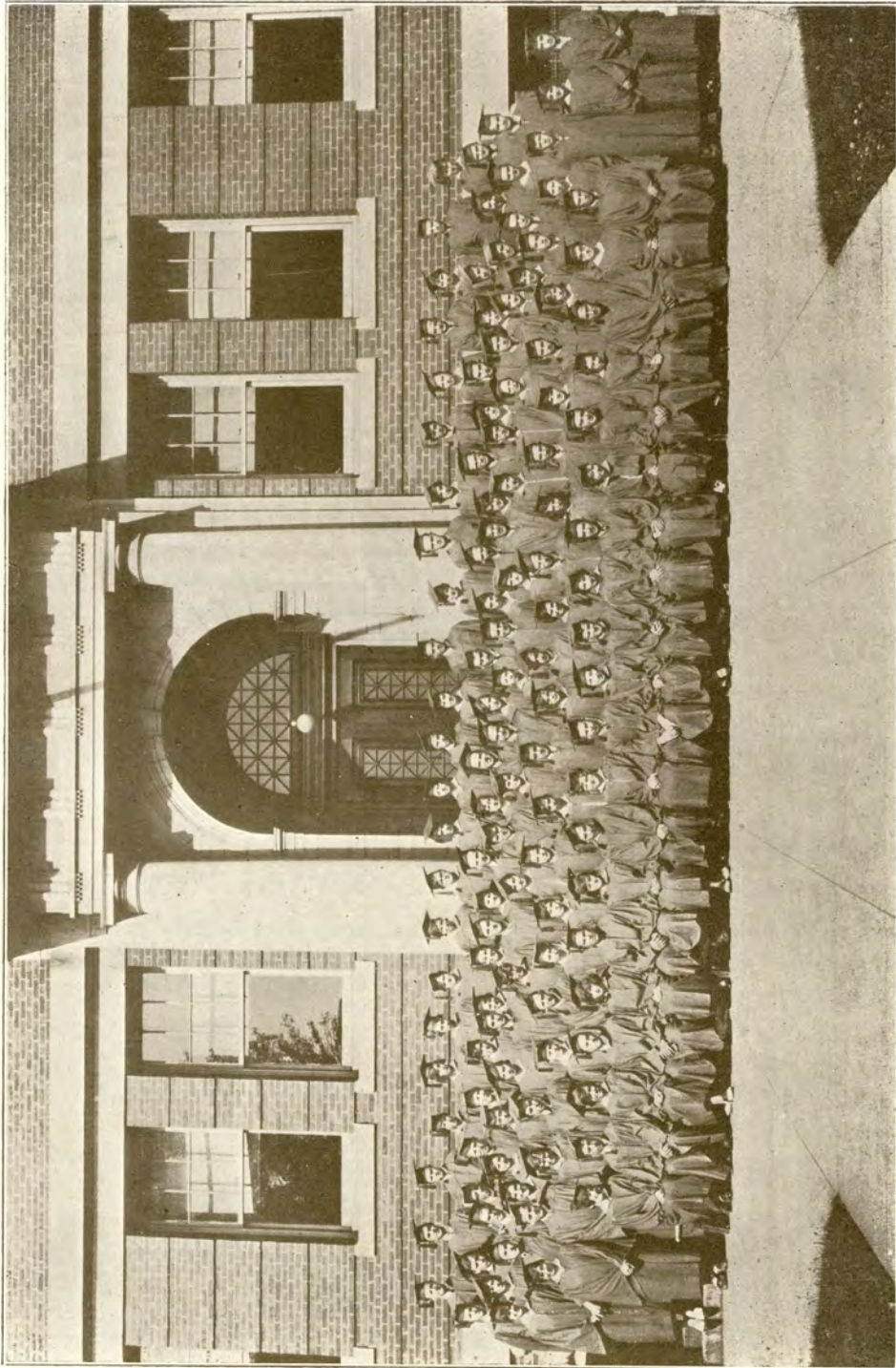


ANOTHER PLACE TO SIT



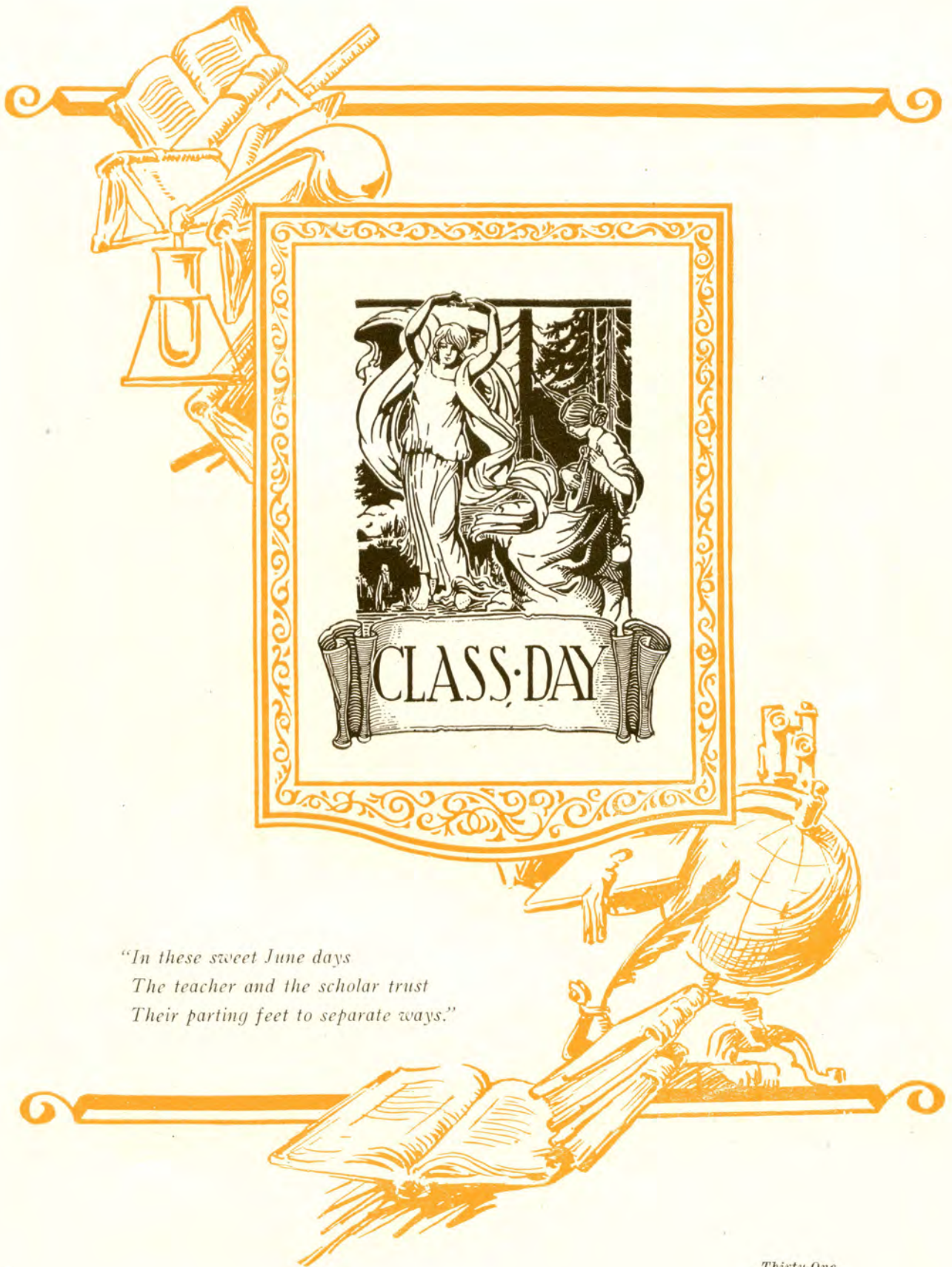
NUTS & BOLTS





SENIOR CLASS





*"In these sweet June days  
The teacher and the scholar trust  
Their parting feet to separate ways."*



## SENIOR'S PROGRESS

(With Apologies to Bunyan)

Perchance, I had eaten too much mince pie that eve. Be that as it may, I did lay me down to sleep and dreamed strange dreams the while I slept.

Behold! I found myself in an unfamiliar land where people with anxious mien bustled about. Thereupon, I addressed a stranger with such words, "What is this land, and who are ye?"

In astonishment, he made reply, "Why, this is *High School*, and my companions and I are *Freshmen*. Tell me your name, I beg."

"I am *Student*."

Then did I perceive that these Freshmen were all journeying in the same direction.

"Whither goest thou?" I asked.

Again, the youth made reply, "We are traveling to a beautiful city called *Education*, but the way is steep and hard. However, after due consideration, I too did decide to make my way to that marvelous city. No sooner had I made my decision than a fairy called *Learning* flew up and with kindly words gave me some textbooks and a sword, *Diligence*, which I needs must carry.

Not long after, a fellow pupil came running to us in great fear and did bid us turn back, for, on the route, stood a great giant, *Algebra*, with his sword *Equations*. Though sore afraid I went forward and, with the aid of my sword, *Diligence*, o'erpowered the Giant who had waylaid many victims.

Lo! As a compensation for my fierce struggle, *Freshman Hallowe'en Party*, clad in gay colors, addressed me with merry words and led me to a large hall where games and dancing were carried on. Thereupon, I joined the gay groups and cast aside my text books heedlessly.

*Mid-Years*, with grim smile, soon bade me take up my books and continue my way carefully for fear of the demon, *Flunk*. Having successfully passed *Mid-Years*, who was reluctant to have me go, I heard a clatter of hoofs behind me and beheld in the distance a beautiful and welcome charger, *Vacation*. Later, I traveled many a mile with him, until *Sophomore* bade me dismount and follow him.

While making our way onward, we met a man of strange visage called *Slang*, who gladly accompanied us. However, at the approach of *Good English*, he turned and fled. *Good English* promptly arrested us for violating the law of correct speech and, on trial, we were found guilty by Noah Webster, the judge, and the jury, Mr. Noun, Mr. Pronoun and others. Hereupon we were sentenced to the prison, *Shame*.

I had no sooner completed my term of imprisonment than *Leap Year Hop* took my hand and joyously we went along the way. However, he soon left me, much to my sorrow, and, again I was forced to travel alone until *Roller Skate Fad* volunteered to hasten me on my journey. Unwisely, I accepted his offer, but



soon I found out that he was leading me away from the wonderful city of *Education*.

*Vacation* then o'er took me, and we traveled together again until we neared a goodly band of people called *Juniors*, who asked me to join them saying, "We are bound for the city, *Education*."

Straightway, we did go down into a deep, dismal Valley of *Chemistry*. There we were forced to do battle with a tribe of warlike creatures called *Experiments*. Many of our company fell by the wayside, but those of us who survived the encounter did go on until we met *Class Rings* who, in his sparkling way, soothed our weary minds.

Soon, I heard joyful shouts from my companions who, I perceived, were welcoming into their midst, *Junior Prom*, a most likeable fellow who led us on gaily, though at considerable expense.

Then, joyful sight, again there appeared *Vacation*, who carried me to the deep sea, where a ship was at anchor.

"Ho, there!" said the crew. We are *Seniors* and will take you to the fair city you seek."

So I boarded the ship, but soon I did perceive that the sea was also strewn with dangers. We had gone but a short way when a black flag was sighted.

"Pirates! The *Physics*!" shouted the sailer who straightwty prepared to do battle with the enemy, whose ammunition was molecules, atoms and electrons. After a severe struggle, we conquered and were greatly cheered by seeing the ships, *Carnival* and *Senior Class Party* ahead.

When almost in sight of *Education*, we perceived a majestic ship skimming over the waters. It was none other than the *Washington Trip* which, leading the way, revealed to us the most beautiful sights we had yet observed and gladdened our hearts.

A fair wind then blew us toward our destination. There, before us on a hill stood the beautiful city of *Education* with its golden streets and walls set with gems.

I left the ship quickly in my eagerness and started to ascend the hill. A man clad in wondrous raiment met me and extended a parchment tied with snow white ribbon. He said, "*Student*, you have faithfully sought *Education*. Therefore, I gladly give you this diploma which will open the gates of the beautiful city ahead."

I did speedily climb to the gates; behold, they opened and I went in amid acclamation.

So I awoke in the morning light and found that a tree near my window had burst into blossoms the while I dreamed my wondrous dream.

Lovina Foote, '30



## DREAMERS

*"Blessed is he who carries within himself  
a god, an ideal, and who obeys it."*

These words, spoken by President Hibben of Princeton University, form one of the fundamental precepts for success in life. In fact, without an ideal, a vision, without a dream of your goal, success is impossible.

The twentieth century will go down in the annals of history as an era of commercialism, of specialization and standardization, and, above all, as an era of speed. Consequently, is it not apparently a marked inconsistency to state that the world is full of dreamers—that really the only people in the world who are actually and truly successful are the men and the women who dream? In the mad rush and whirl of life today it would seem that, were you foolish enough to spend even a few minutes in dreaming, you would soon be left at the bottom of the golden ladder, the top of which each of us is hoping to reach. However, dreaming is not foolishness; it is wisdom.

What one of our beneficial and precious and now absolutely essential possessions was not bestowed upon us by a dreamer—a man who was probably mocked and scorned for his foolish fancies? Day-dreams. We all have them, but they are elusive and often slip away from us. One young man day-dreamed that the world was round, or the history of our country might have been vastly altered. Another dreamed of communication by wire, and the world was given the telephone. Day-dreams brought us great inventions, important scientific developments, invaluable discoveries in relation to medicine and disease. In fact, the entire progress of civilization can be entered to the credit of the men who dreamed a dream and had the courage to set about to make that dream come true.

Names which are household words to us—Franklin, Edison, Lindbergh, among others—are the names of men of vision. Knowing the stories of these men, we honor and esteem them; yet, because they are so great, we feel that they are remote from us, that our work can never run parallel with theirs. Very few of us dare to aspire to such great achievements. Perhaps, if we consider the work of men and women of today who are engaged in work such as we are doing or may do, we, too, may feel encouraged to form an ideal and hold it before us constantly.

About ten years ago a young man of twenty-seven had two hundred dollars and an idea—an idea which only a young man would have cherished. He knew a man who dealt in real estate, and he persuaded his friend to let him buy two acres of land side by side for one hundred dollars each. Then he set about to interest other people in his plan. His dream was so firmly fixed in his own mind that he made other people believe in it. Five years—just five years—after he borrowed money to build his first structure, he was paying \$850,000 for an office building site in Brooklyn. Today in New York, standing to his credit, are



many buildings, including the Lincoln Hotel, and the magnificent Roxy's Theatre, and all this Irwin S. Chanin accomplished in but a decade of belief in himself and his vision.

Many boys—and girls, too—think of becoming lawyers. When William Glen Marvin was clerking in a Dayton, Ohio shoe store, working his way through school, he wrote on a slip of paper, "I am going to be a lawyer. I will go to New York, make a pile of money, and then go to California and live like a gentleman." He worked his way through college as a telegraph night operator, and later, in order to pursue his law studies he taught at night. After service as an aviator in the war, he entered a bank to "learn big business from the inside." He branched out for himself, and at the age of thirty-two he had founded the largest international law firm of its kind in the country and had saved up his fortune. His choice was a difficult one. Should he follow his boyhood contract or keep on gaining riches? He chose to do what few people could do. He cried, "Enough." In the prime of his life he is a successful, retired business man, all because he clung to the theory that to get anywhere you must keep your ultimate objective in view.

Henry Ford has said, "You can look ahead into the future as far as you can look back into the past." That includes everyone—old and young—for no matter what our age or status in life at present, we can always forget the failures of the past and accomplish what we want to accomplish, if we just form an ideal and keep on dreaming.

Muriel D. Tomlinson, Valedictorian

### REAL VALUES

*"A man passes for that he is worth."*

Emerson has here stated the standard by which man is everywhere and at all times judged. The worth of a man depends on what he is, not what he seems to be. Throughout his life his every word and action is being judged. He is unknowingly taking the test given by his fellowmen. Thoughts and deeds he had thought long hidden are revealed by his inner self. He may make brave pretenses and bold boastings, but false values never ring true; only true values can last. Today he may be the envied hero in a score of brilliant achievements, the products of his fruitful imagination, but tomorrow, divested of this false glory, he remains a pitiable object in the minds of his fellowmen. The old, familiar saying still holds true. "You can fool some of the people some of the time, but you can't fool all of the people all of the time." What he is shows as clearly in his features as if it were written there.

To be worth something does not mean financial worth, nor does it mean that one must achieve great fame or distinction. Fine, noble qualities are as often found among the lower ranks of life as the higher ranks. A man is worth something if he does his best, working for general as well as personal betterment with-



out injury to anyone else. The worthy citizen of a town or city is a valuable resident of his community. Such a man has the welfare, interests, and improvement of the town at heart. He keeps a vigilant eye on public and municipal affairs, forms intelligent opinions about them, and helps or opposes men according to their deserts. His rewards for such public services are the respect and admiration of everyone. Any earnest citizen, once he realizes what citizenship means, can help to improve his city. Roosevelt has said that for even the smallest fine deed or action the world is so much the better; on the other hand, for every base deed we are just so much the poorer.

A stranger comes from a distant land to a new country. He gets a finer house, a finer car than his neighbors. He has airs and pretensions with which he hopes to impress these people. At first these impressions are successful, but eventually they are recognized as being merely surface values. The man has no true worth and all his natural talents and abilities are wasted on his efforts to be something he isn't. It is better to be of some little worth than of a great value which is only false.

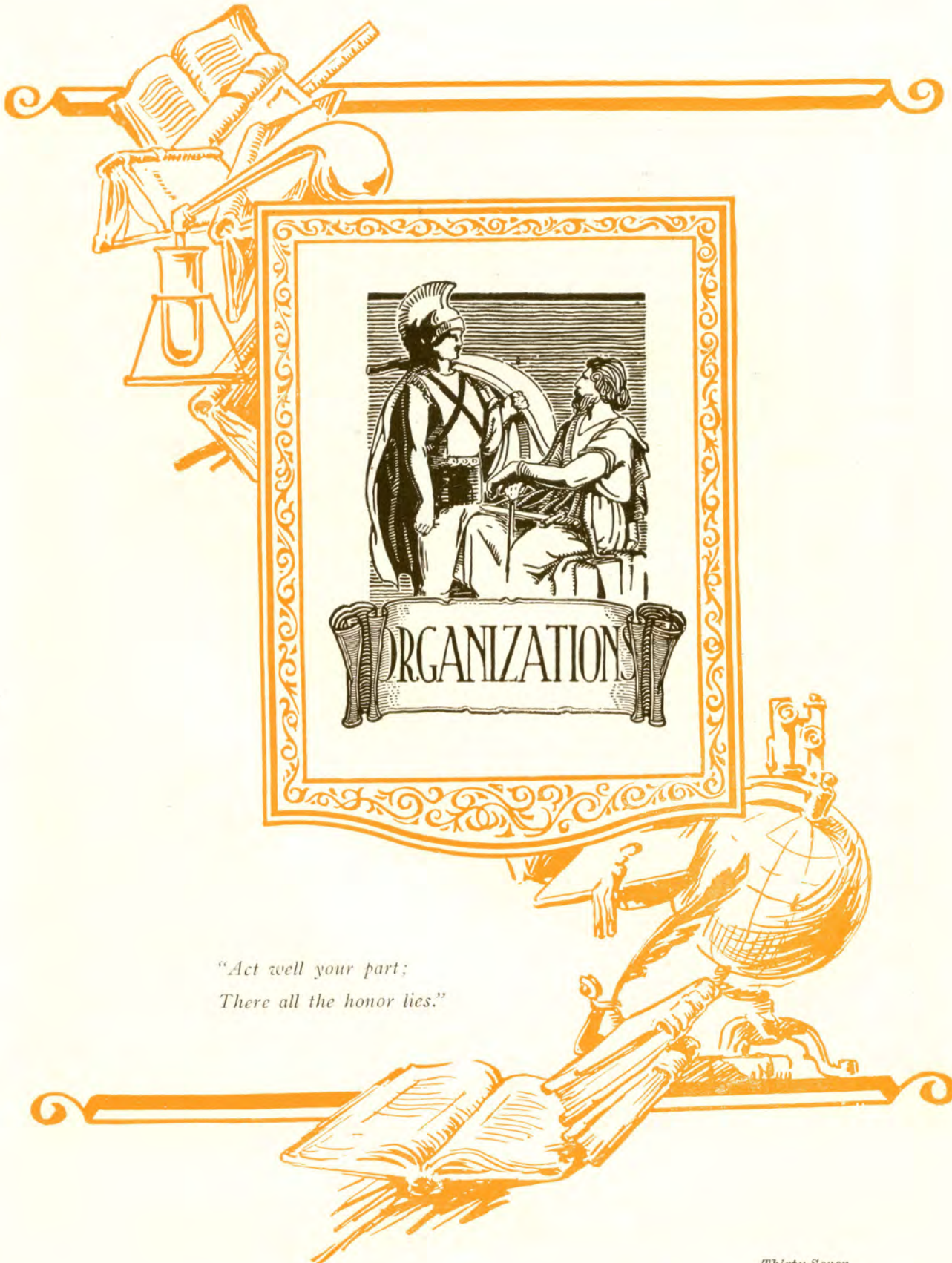
Throughout the ages there have been many heroes who by their deeds have helped immeasurably the advancement of civilization. The influence which these men have had upon the races has been of as much value as their services. They have served as examples to which posterity might strive. With their achievements they have given others the desire to accomplish great things. The knowledge that something can and has been done by others inspires man. He feels in himself abilities long dormant and a force which seems to drive him on. With such shining examples before him he goes through life with a higher purpose, following footsteps which will not lead him astray.

Tonight we are graduating from Manchester High School, but we have still another test to pass—the test of life. Wherever we go, we are being marked and stamped for what we are and not what we may seem. Pretensions and boastings avail nothing. One must be true to himself to succeed.

*“To thine own self be true!”  
May Conscience lead us through  
Whatever comes or goes  
Of future joys or woes;  
For does not Shakespeare say  
That as Night follows Day,  
In this we never can  
‘Be false to any man!’”*

Doris F. Muldoon, Salutatorian





*"Act well your part;  
There all the honor lies."*



"Rulers of the world, being persuaders of it."



#### SOMANHIS STAFF

Top Row: Juul, Hansen, Dowd, Mr. Lee.

Middle Row: Ruddell, Miss Walsh, Carlson, Waskiewich, Foote, Lupien.

Front Row: Cubberly, Howland, Rubinow, Tomlinson, Johnson, Reichenbach, Marlowe.

#### EDITORIAL STAFF

Editor-in-Chief—Muriel Tomlinson '30

Assistant Editors—Austin Johnson '31, Charlotte Rubinow '31

#### ASSOCIATE EDITORS

School Notes—Elizabeth Carlson '30

Exchange—Lovina Foote '30

Alumni—Theodore Lupien '30

Art—Elizabeth Washkiewich '30

Athletics—Ernest Dowd '30,

Edward Hanson '30

Jokes—Harry Howland '30

#### BUSINESS STAFF

Business Manager—Harry Juul '31

Assistant Business Managers—Daniel Foley '31, Richard Reichenbach '30

Circulation Manager—Carle P. Cubberly '30

Assistant Circulation Manager—Earl Ruddell '31

Faculty Advisor—Miss Avis C. Walsh

Faculty Business Advisor—Mr. Francis G. Lee

The Somanhis Staff of 1930 may review with pride its achievements. During the year, many of *Somanhis's* time-worn and out-of-date characteristics have been removed, making *Somanhis* a considerably more modern magazine. New features and more material have been added to each issue. The success of these changes was decisively proved when *Somanhis* was awarded second prize in a national contest for school publications, in a field of 700 competitors. Miss Avis Walsh, the new faculty advisor for *Somanhis*, has been largely responsible for many of the innovations, and, consequently, for the outstanding success of the magazine this year.



*"Words clothed in Reason's garb"*



DEBATING CLUB

Top Row: Austin Johnson, John Lloyd, Mr. Jenkins, Maurice McKeever.  
 Bottom Row: Beatrice Laufer, Max Goodstine, Margaret Quinn, Carle Cubberly, Charlotte Rubinow, George Marlowe.

DEBATING CLUB  
 OFFICERS

President .....Carle Cubberly  
 Vice-President .....Charlotte Rubinow  
 Treasurer .....Austin Johnson

Under the able direction of Mr. Arland Jenkins, our new debating coach, the Manchester High School Debating Team enjoyed its most successful season. On March 8, 1930, Manchester won a unanimous victory over the highly-praised Choate Preparatory School of Wallingford. Maurice McKeever, Austin Johnson, and Carle Cubberly, upheld the Affirmative side of the question: "Resolved, that the United States intervention in the Caribbean is justified."

On March 19, 1930, six Manchester debaters won the first leg on the H. Wales Lines cup and were crowned the 1930 champions of the Triangular Debating League. The question was: "Resolved, that trial by jury should be abolished in the United States." The Manchester Affirmative Team, which defeated the Meriden Negative in Manchester, was composed of Margaret Quinn, Austin Johnson, and Charlotte Rubinow. The Manchester Negative, which defeated the Middletown Affirmative at Middletown, included Beatrice Laufer, John Lloyd, and Carle Cubberly.

In the final debate of the year, the Manchester Negative team, represented by Austin Johnson and Carle Cubberly, was defeated 2 to 1 in a very close debate with Wesleyan Freshmen on the same question that was debated at Choate.



*"Ennobled hath the buskin'd stage"*



SOCK AND BUSKIN

Top Row: McKeever, Johnson, Cheney, McComb, Humphries, Hansen, Howland.  
Middle Row: Cheney, Carlson, Waskiewich, Lowell, Garaventa, Gerard, Straughan, Robinson, Holmes.  
Front Row: Sullivan, Burr, Buccino, Bendall, Muldoon, Miss McGaughan, Campbell, Cubberly, Johnson, James.

SOCK AND BUSKIN

During the past year, the Sock and Buskin has been enjoying a happy season under the competent guidance of Miss Geraldine McGaughan.

This year started off with the initiation of new members into the club, Shortly afterwards, a business meeting was held to discuss plans for the coming year.

The school year of 1929-1930 witnessed the presentation of one major performance—"The Lucky Break", a three-act farce comedy by Zelda Sears, which was presented late in November at Cheney Hall. This production, with a cast composed almost entirely of novices, proved a tremendous success.

Members of Sock and Buskin and others gave another three-act play, "Tweedles," under the direction of Miss Helen Estes, for the benefit of group II of the Washington Trip Fund.

During the year, as is the usual custom, small plays have been presented in Assembly. The first of these was "The Killer", a gripping melodrama of the North West, enacted by Doris Muldoon, Ermano Garaventa, Austin Johnson, and Robert McComb. The next play produced was "The Wedding Present", in which Francis Sullivan, Elena Burr, and Sherwood Humphries took part.

In March many members of Sock and Buskin took advantage of the opportunity of seeing, at Parson's Theatre, America's foremost actor, Walter Hampden, in his remarkable portrayal of "Richelieu", in the Arthur Goodrich adaptation of the Bulwer-Lytton play by that name.



*"Lights of the world and stars of human race"*



LEADERS CLASS

Top Row: Rogers, Gerard, Muldoon, Waskiewich, Hart, Gaylor, Gryk, Pongratz.  
Middle Row: Straughan, Waddell, Ripplin, Beer, Harris, Cole, Miroglio.  
Front Row: Peckham, Wilcox, Emonds, Dziadus, Runde, England, Tierney, Cheney,  
Tomlinson, Miss Howard.

LEADERS' CLASS

Leaders' Class, under the direction of Miss A. Virginia Howard, the new girls' gym teacher, has had a very successful year. The twenty-five girls who constitute Leaders' Class are admitted by tests, both in writing rules and in apparatus work.

The girls this year have had a variety of things to do. They have had tap dancing, tumbling, basketball, hockey, baseball, speed work, track and acrobatics. This course has proved very interesting because of the many fields of athletics which were opened.

The girls who had a chance to teach gained a great deal of experience in coaching, refereeing basketball games, and, especially in leadership, which is a very important factor in every branch of life. The girls who were taught also gained much by having Leaders' Class girls instruct them, for they could then be divided into smaller groups and could enjoy more sports and more individual training.

The class meets once a week. At these meetings the girls are taught advanced gymnastics and the theory of dancing. They learn a great deal and profit considerably, both by working as a group and by teaching classes as an individual.

At the last April assembly, the class put on an exhibition of tap dancing, pyramid building, and other gymnastic work which proved extremely enjoyable and successful, largely because of the distinct novelty of the presentation.



*"To create Christian ideals of work, play, and service"*



GIRL RESERVES

Top Row : Miss Nuzum, Lithwinski, Gryk, Gaylor, Miroglio, Cole.

Third Row : Hunter, Emonds, Straughan, Stevenson, Kean, Roach, England, Lyttle, Campbell.

Second Row : Lyttle, Donahue, Pongratz, Heafs, Hand, Waskiewich, Madden, Ferris,  
Huebner, Runde.

Front Row : Newton, Horan, Hart, Dziadus, Beer, Tierney, Harrison, Kraetschmar, Janssen,  
Janssen.

GIRL RESERVES

The Girl Reserves' Club, newly organized this year under the supervision of Miss MacDonald, Miss Nuzum, and Miss Howard, has upheld the purpose of the organization, "To Find and Give the Best", in a number of ways. The girls, dressed in Japanese costumes, served tea and cakes and sold Oriental trinkets at an Oriental Tea and Bazaar which was held at the Rec. The revue, "Down Petticoat Lane", which the girls presented as an assembly program, gave them much fun in the preparation. Bowling on the Rec. alleys proved to be of interest to almost all of the girls. The supper-hike, at which the girls who have been reasonably regular in attendance and have otherwise lived up to the qualifications received their pins, and the over-night hike, as well as the various parties which the girls arranged, made a pleasant and complete program.



*"Sonorous metal blowing martial sounds"*



BAND

Top Row : Wilson, Brown, McKeever, Lloyd, Cubberly, Gould.

Middle Row : Gudzunas, Helm, Rollason, Steinberg, Bjorkman, Weiman, Braithwaite.

Front Row : Hadden, Bendall, Lewis, West, Snow, Lyons, Rylander, Edwards.

BAND

Under the leadership of Mr. Harold Turkington, the band has concluded a very successful year. Last year many of the band members graduated and a call for new candidates was sent around, which succeeded in its purpose of inducing prospective band players to enter. The total number of members this year was thirty-one. A set of books, containing many new marches and selections, was purchased.

The band played at the majority of the athletic games. It took part in various parades, including the Memorial Day Parade and the General Motors' Parade. It has also furnished music for entertainments.

As a token of appreciation by the local Lions' Club, the band was sent to the State Contest held in Meriden, May 16. Although Manchester did not take first place, it made a very good showing for itself.

Through graduation, as in previous years, many of the members will be lost, and it is expected that other fellows who are interested in the band will join and help carry on the work next year.

The officers for the past year have been :

President—Reginald West

Secretary—Maurice McKeever

Vice-President—Robert Lyons

Treasurer—Carle Cubberly



*"With melting airs or martial, brisk or grave"*



#### ORCHESTRA

Top Row: Batson, Gudzienas, Marlow, Hand, McKinney, Miss Dorward, Pieseik, Smith, Kissman, Foster, Segwick.

Middle Row: Keith, Bars, Andrulot, Edwards, Bendall, Sullivan, Lithwinski, Martina, McGill, Shorts, Cole, Walker.

Front Row: McKinney, Helm, Steinberg, Dziadus, Batson, Clough, Weiman, Campbell.

#### ORCHESTRA

The orchestra this year has a membership of 35 students. Of this number about 30 are active members. The various instruments include violins, pianos, saxophones, trumpets, trombones, and drums. The orchestra, under the excellent direction of Miss E. Marion Dorward, is making quite a name for itself.

Besides having played for every High School Assembly, the orchestra has appeared in numerous public concerts. These appearances include: the presentation of "Tweedles" by Washington Group II at High School Hall; "The Womanless Wedding", presented by the Men's League of the Center Congregational Church; the Evening School Graduation; the Triangular Debate; the presentation of "The Lucky Break", the annual Sock and Buskin play at Cheney Hall, and the Commencement exercises.

In early September the orchestra, after two rehearsals, journeyed to the Eastern States Exposition at Springfield and won second place in an orchestra contest. On May 24 the orchestra went to Pawtucket, R. I.

The following have been members of the orchestra for four years: Fred Edwards, Roy Johnson, Francis Sullivan, Winston Bendall, Norman Campbell, Olympia Martina.



*"Songs consecrate to truth and liberty"*



COMBINED GLEE CLUBS

#### BOYS' GLEE CLUB

The C. C. I. L. Glee Club contest was held in East Hartford in April and the cup went to Middletown High. The club this year was not what it could have been. Consequently, following the contest, the club was disbanded and another, consisting of only picked members, started. The club has made a few public appearances this year.

A double quartet was organized in the middle of the school year and met with much success. Its personnel is as follows: Hewitt Wilson and Charles Pirie, first tenors; Carl Spears and Fred Edwards, second tenors; Russell Clough, Roger McCormack, and Harry Juul, first basses; Joseph Della Fera, and Herbert McKinney, second basses.

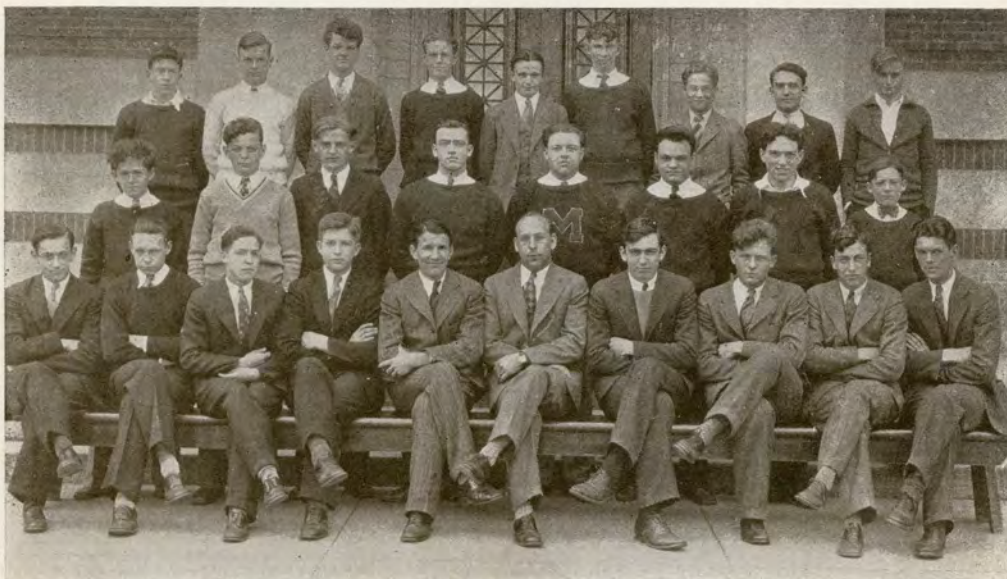
#### GIRLS' GLEE CLUB

The Glee Club was organized a bit differently this year. The girls were divided into seven groups, each having a leader whose duty it was to keep her particular group working harmoniously for the betterment of the club. This plan, through the aid of Miss Dorward, proved highly successful. Although the girls did not come out on top at the C. C. I. L. contest, they did splendid work and revealed the essential qualities of a first class Glee Club.

The officers for the year were: President, Mary Tierney; Group Leaders: Elizabeth Carlson, Mildred Hutchinson, Doris Turkington, Bella Silverstein, Beatrice Perrett, Clarissa Wood, and Esther Tack. The accompanists were Elizabeth Lithwinski and Esther Tack. The club has a membership of sixty-two members.



*"When friends meet, hearts warm"*



HI-Y

First Row : Cubberly, Brown, Howland, Davis, Hansen, Mr. Robinson, McCormick, Murphey, Wilson, McComb.  
 Second Row : Perrett, Ruddell, Johnson, Cheney, Potterton, Lupien, George, Hadden.  
 Third Row : McHale, Joslin, Glenney, O'Leary, Cole, Turkington, Bendall, Searlato, Heck.

HI-Y CLUB

President .....Edward Hansen  
 Vice-President .....Arthur Davis  
 Secretary and Treasurer .....Harry Howland  
 Athletic Manager .....Theodore Lupien  
 Leader .....Mr. Chester L. Robinson

The Manchester Hi-Y Club, which is composed of twenty-seven members, has just completed its ninth successful year. Its purpose is: "To create, maintain, and extend throughout the school and community high standards of Christian character." The Hi-Y platform stands for clean speech, clean sports, clean scholarship, and clean living.

The membership is non-sectarian and is limited to the three upper classes of the high school.

The one great thing that the Hi-Y Club does is to bring the fellows into closer relationship with each other. In so doing it teaches fair play and gives each person a sense of right and wrong. A club based on such principles as these is bound to be a success.

The membership of the Hi-Y Club is as follows:

Seniors			Juniors		Sophomores
Bendall	Hansen	McComb	Cheney	McHale	Brown
Cole	Heck	Murphey	Davis	Ruddell	Hadden
Cubberly	Howland	Perret	Joslin	Turkington	Kerr
George	Johnson	Scarlato	McCormick	Wilson	O'Leary
Glenney	Lupien		Potterton		



*"The noble Powers that be"*



STUDENT COUNCIL

Top Row: Davis, Squatrito, O'Leary, Joslin, Kerr.

Middle Row: Treat, Hansen, McCann, Murphey, Wilson, Bendall.

Front Row: Mr. Quimby, Clegg, Murphey, Fogg, Hansen, Searlato.

STUDENT COUNCIL

The Student Council is composed of the chairmen of the home-rooms of the three upper classes and the presidents of all the classes. It meets with Mr. Quimby and discusses all matters pertaining to the student body. The more important duties of the Student Council include the awarding of all athletic letters and the appointing of all assistant managers and managers.

Through the Student Council, representatives of the student body take an actual part in the management and carrying out of school affairs.



## Hall of Fame

FOR 1930

"SOMANHIS"—Second prize in Columbia National Contest of School Publications for schools of 800-1000 pupils.

DEBATING TEAM—H. Wales Lines Cup for 1930.

SWIMMING TEAM—C. C. I. L. Trophy permanently.

AUSTIN JOHNSON—State prize and New England prize for health play entitled "The Most Alarming Mortal."

PATRICIA MORONEY—Third prize for short story printed in "Scholastic Magazine," entitled "Conquest." First state prize in contest held by American Chemical Society for essay entitled "The Relation of Chemistry to the Enrichment of Life."

MARGARET QUINN—First prize in Connecticut for poetry in National High School Awards Contest.

CLAYTON HANSEN—First prize in Connecticut for best sports story in National High School Awards Contest.

JAMES TOMAN—Cash prize for Fire Prevention essay. State prize for essay "The Safety First Crusade." Pamphlet published by W. C. T. U.—"Milk vs. Beer".

ORCHESTRA—Won second prize—\$50—last September at the Eastern States Exposition, Springfield, Mass. Tied Bristol, R. I. for third place in Class C at the New England Festival Contest for Bands and Orchestras, Pawtucket, R. I., May 24.

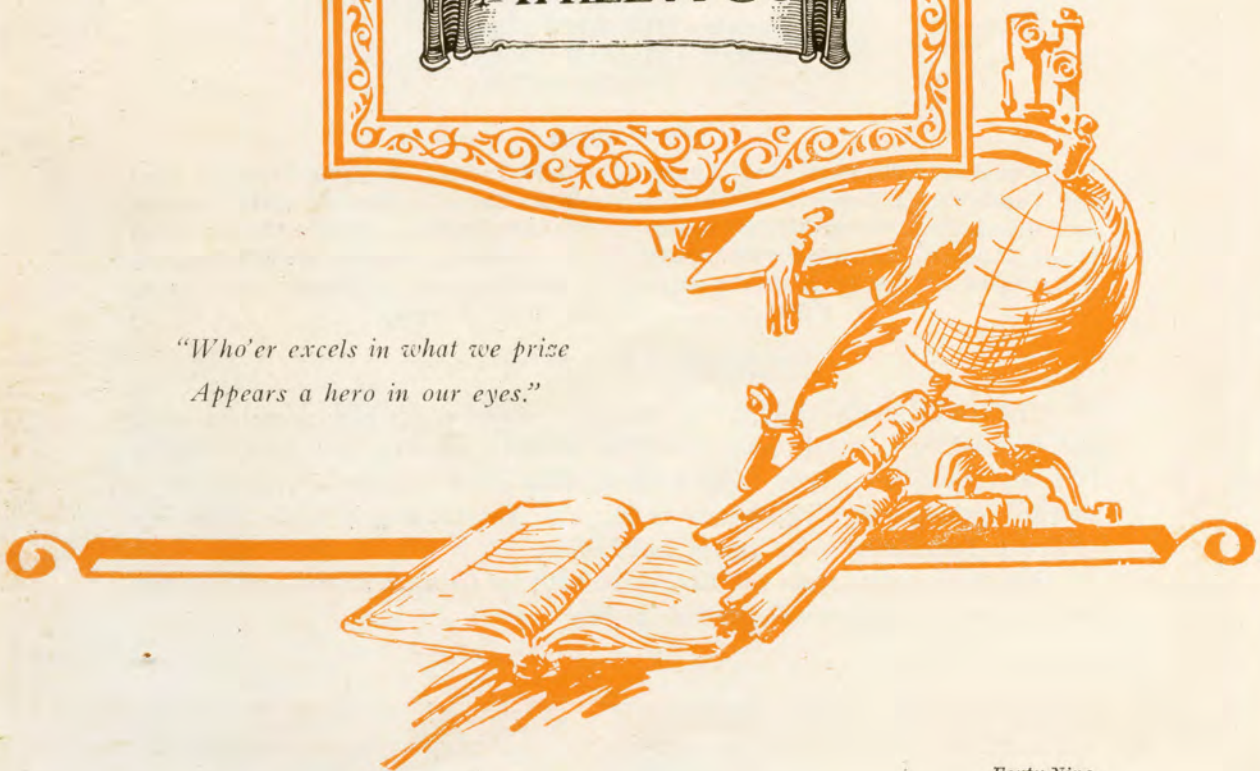
PHOEBE MANNING—Prize for Science essay "How Would You Combat the Fear of a Small Child for Insects?"

LYLIAN HUTT—First prize for "Business Advantages in the Non-Use of Alcohol" in Hartford County.

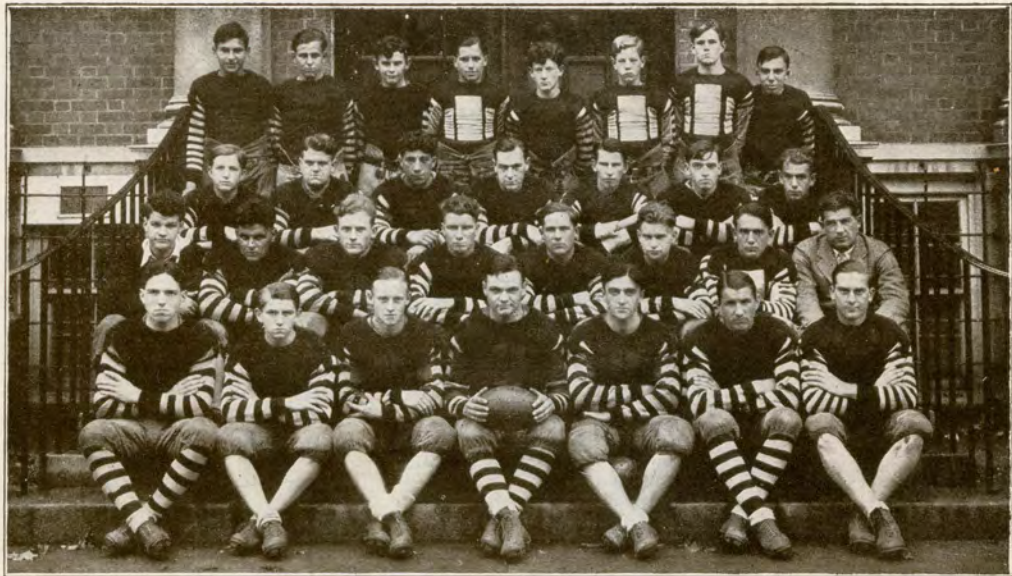




*"Who'er excels in what we prize  
Appears a hero in our eyes."*







#### FOOTBALL TEAM

Top Row: Berger, Magnuson, MacIntyre, Lithwinski, Sheridan, Treat, O'Leary, McCormick.  
 Second Row: Davis, McKinney, Squatrito, Murray, Turkington, Cheney, Radding.  
 Third Row: Glenney, Spencer, Murphey, Courtney, Mozzer, Scheibenpflug, Scarlato, Coach Kelley.  
 Bottom Row: George, Moriarty, Dowd, Lupien, Nicola, Hansen, West.

#### FOOTBALL

Captain—THEODORE LUPIEN  
 Manager—WILLIAM GLENNEY  
 Coach—THOMAS KELLEY

#### THE TEAM

Left End .....Theodore "Ted" Lupien	Right Tackle ....Reginald "Reggie" West
Left Tackle .....Roger "Bull" Spencer	Right End .....Edward "Eddie" Hansen
Left Guard .....Walter "Walt" Mozzer	Quarter Back .....Ernest "Ernie" Dowd
Center .....Arthur "Art" Davis	Left Halfback Dominic "Squat" Squatrito
Right Guard .....William "Bill" George	Right Halfback .....Bruno "Nick" Nicola
Fullback .....Lincoln "Line" Murphey	

#### REVIEW OF THE SEASON

The red and white team, by far the most powerful this high school has ever had, finished the football season in a blaze of glory, winning five games, losing two, and tying one. The team starting with a few veterans developed into a smooth working unit. The success of the team was due largely to the leadership of Coach Tom Kelley and Captain Ted Lupien.

Almost an entire team will have to be built up for next season owing to the fact that many veterans will graduate in June.





**BASKETBALL TEAM**

Top Row: Mr. Clarke, Smith, O'Leary, Tierney, Squatrito, McCormick, Murphey.  
 Bottom Row: Courtney, Nicola, Dowd, Moriarty, Turkington.

**BASKETBALL**

Captain—ERNEST DOWD

Manager—LINCOLN MURPHEY

Coach—WILFRED CLARK

**THE TEAM**

Left Forward .....Albert "Al" Smith, Marcus "Squint" Moriarty  
 Right Forward .....John "Zeck" Tierney, James "Jim" O'Leary  
 Center .....Howard "Gob" Turkington, Richard "Dick" McCormick  
 Right Guard .....Ernest "Ernie" Dowd, Dominic "Squat" Squatrito  
 Left Guard .....Bruno "Bowly" Nicola, William "Bill" Courtney

**REVIEW OF THE SEASON**

The Red and White players won seven games and lost three games. The team was tied with Meriden for second place in the C. C. I. L. The season's record was very impressive and six of the ten players will play during the 1930-1931 basketball season.





**BASEBALL TEAM**

Bottom Row : Kerr, Fraser, Lupien, Captain Bycholski, Dowd, Tierney, Hedlund.  
 Second Row : McConkey, Magnuson, Squatrito, O'Leary, Smith, Brown.  
 Third Row : Manager George, McCormick, Mahoney, Coach Kelley.

**BASEBALL**

Captain—CHARLES BYCHOLSKI  
 Manager—WILLIAM GEORGE  
 Coach—THOMAS KELLEY

**THE TEAM**

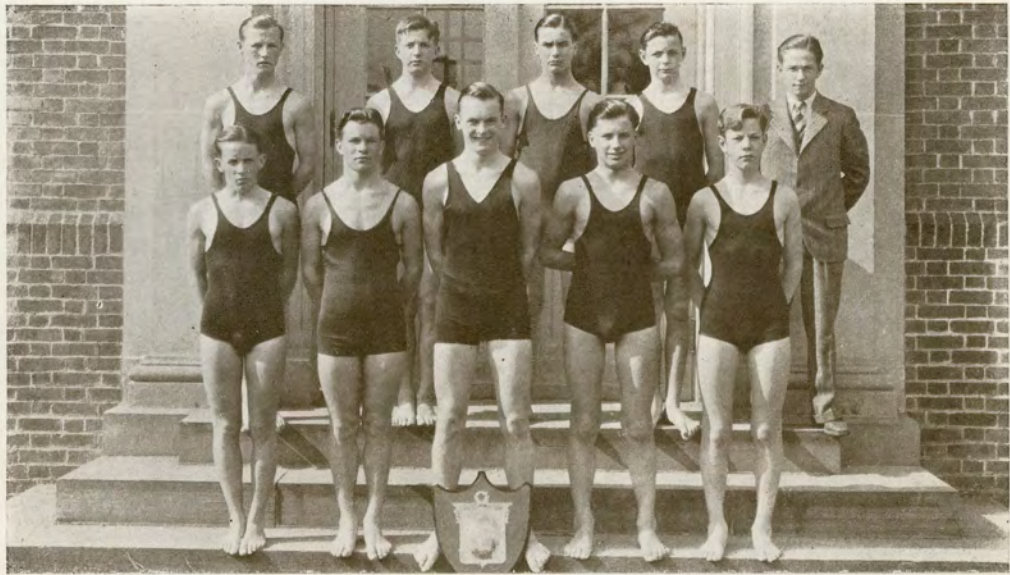
Catch .....	Charles "Whitey" Bycholski
Pitch .....	Roy "Chick" Fraser, David "Dave" McConkey
First Base .....	John "Zeek" Tierney
Second Base .....	Marcus "Squint" Moriarty
Third Base .....	James "Jim" O'Leary
Short Stop .....	Otis "Buddy" Kerr
Left Field .....	Theodore "Ted" Lupien
Center Field .....	Ernest "Ernie" Dowd
Right Field .....	John "Johnny" Hedlund

**REVIEW OF THE SEASON**

1930 baseball team has at the present date won 10 games and dropped 3 games. By winning its two remaining games, it will tie West Hartford for 1st place in the C. C. I. L.

The team is represented by four seniors—Bycholski, Lupien, Moriarty, and Dowd. The success of the team is due to the heavy hitting of Lupien, Dowd, and O'Leary, the fine defensive playing of Kerr, McConkey, Tierney, Hedlund and Magnuson, and the fine pitching of Fraser and McConkey, backed up by the fine catching of Bycholski.





#### SWIMMING TEAM

First Row: Hicking, Cowles, Captain Joslin, Lithwinski, Treat.  
Second Row: Moriarity, Davis, Stevens, Ruddell, Manager Bendall.

#### SWIMMING

Captain—RICHARD JOSLIN

Coach—WILFRED CLARK

Manager—WINSTON BENDALL

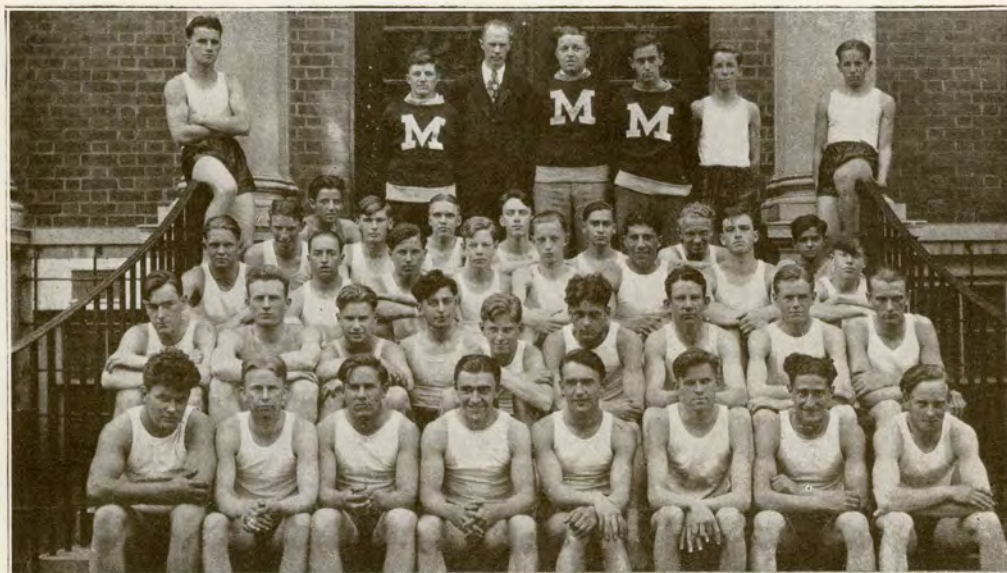
#### CHAMPIONSHIP SUMMARY

Manchester won the Central Connecticut Interscholastic title for the third successive time. The plaque is now in permanent possession of the Manchesterites.

#### REVIEW OF THE SEASON

The swimming team, besides winning the League Trophy, gained valuable experience that should enable them to win a leg on the plaque next season. The whole team was made up of representatives from the three lower classes.





#### TRACK TEAM

Top Row: H. Fish, J. Daigle, Ass't. Man; C. L. Wigren, Coach; G. Potterton, Ass't. Man;  
C. Cubberly, Man; E. Smith; L. Hicking.  
Fourth Row: R. Jewell, F. Dellafera, S. Burno, W. Peterson, A. Johnson, A. Lengel,  
E. Fisher, F. W. Dellafera.  
Third Row: R. Swanson, D. Johnson, E. Lithwinski, C. Treat, A. Madden, D. Squatrito,  
R. Cheney, J. Toman.  
Second Row: T. Murray, L. Murphey, F. Schiebenpflug, A. L'Heureux, F. Simon,  
F. Wittman, A. Smith, J. O'Leary.  
First Row: R. Spencer, H. Lane, W. Mozzer, B. Nicola, F. Scarlato, A. Mozzer,  
A. Pucci, E. Dowd.

#### TRACK

Captain—FRANK SCARLATO  
Manager—CARLE CUBBERLY  
Coach—CHARLES WIGREN

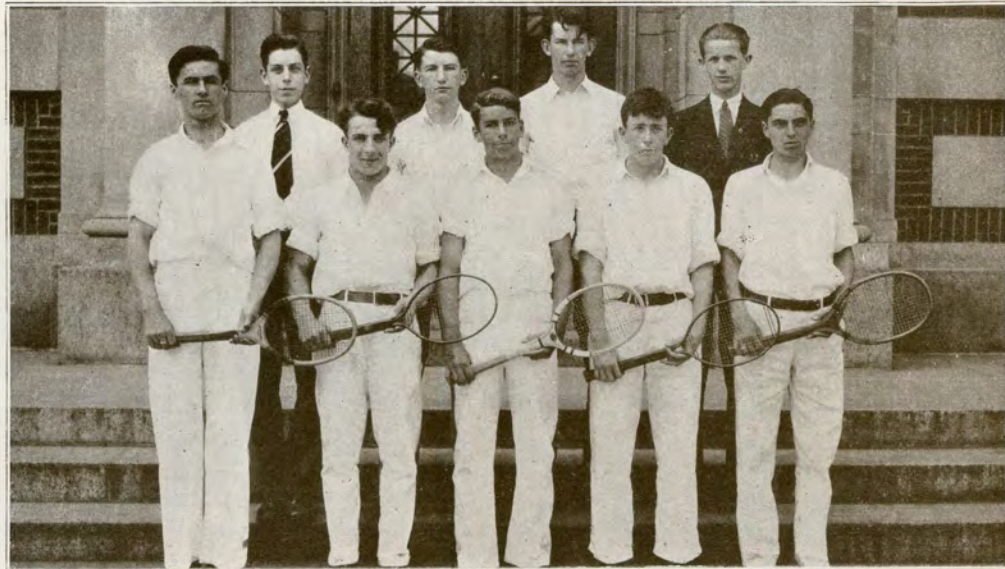
#### THE TEAM

Dashes—E. Dowd, F. Wittmann, A. Pucci  
Running Events—L. Murphey, T. Murray, L. Hicking, A. Mozzer, B. Simons, Swanson,  
E. Smith  
Jumping—B. Nicola, A. Smith, J. O'Leary, R. Jewell  
Field Events—R. Spencer, D. Squatrito, W. Mozzer, R. Cheney, C. Jamroga  
Pole Vault—F. Scarlato, H. Fish

#### REVIEW OF THE SEASON

Events	Holder	Class	Time or Distance
100 yards	C. Gustafson	'21	10.2 seconds
220 yards	E. Dowd	'30	24 1-5 seconds
440 yards	D. Robertson	'31	54.4 seconds
880 yards	T. Chambers	'29	4 mins. 35.4 sec.
Pole Vault	F. Scarlato	'30	10 ft. 11 inches
High Jump	R. Dexter	'23	5 ft. 7 inches
Broad Jump	A. Smith	'32	20 ft. 4 inches
Discus	W. Johnson	'29	115 ft. 5 inches
Shot Put	L. Cheney	'29	40 ft. 6.7 inches
Javelin	E. Mantelli	'28	154 ft. 5.5. inches





TENNIS TEAM

Top Row: Burr, W. Turkington, H. Turkington, R. Johnson, Mgr.  
 Bottom Row: Klein, Urbanetti, Werner, McHale, Rossi.

TENNIS

THE TEAM

McHale, .....	No. 1
H. Turkington .....	No. 2
Klein .....	No. 3
E. Werner, W. Turkington .....	No. 1 Doubles
Rossi, Urbanetti .....	No. 2 Doubles

REVIEW OF THE SEASON

	Place	We	They
May 7	West Hartford—There	0	5
May 9	Meriden—Here	Forfeited to us	
May 14	East Hartford—There	5	0
May 17	Bristol—Here	2	3
May 21	Rockville Here	3	2
May 24	Chapman Tech—There	2	4
May 27	Weaver—Here	Cancelled	
May 29	West Hartford—Here	1	2
June 4	Bristol There		
June 6	East Hartford—Here		
June 10	Chapman Tech. Here		

Our tennis team can explain the loss of four games by the lack of experience of its members. It contains only one veteran, Rossi. Our hopes for next year are high, for we are to lose only one player by graduation.



## SENIOR LETTER MEN

### FOOTBALL

Theodore Lupien, Capt.  
William Glenney, Mgr.  
Bruno Nicola  
Walter Mozzer

William George  
Ernest Dowd  
Marcus Moriarty  
Edward Hansen  
Frank Scarlato

Reginald West  
Roger Spencer  
Lincoln Murphey  
William Courtney

### BASKETBALL

Ernest Dowd, Capt.  
Lincoln Murphey, Mgr.

Bruno Nicola  
William Courtney

Marcus Moriarty

### BASEBALL

Charles Bycholski, Capt.  
William George, Mgr.

Ernest Dowd  
Theodore Lupien

Marcus Moriarty

### TRACK

Frank Scarlato, Capt.  
Carle Cubberly, Mgr.  
Alfred Pucci

Lincoln Murphey  
Ernest Dowd  
Bruno Nicola

Arthur L'Heurex  
Walter Mozzer

## ATHLETIC HONOR ROLL

CARLE CUBBERLY—"Cubby" was an efficient manager of track.

WILLIAM COURTNEY—"Bill" was a letter man in football and basketball.

ERNEST DOWD—"Ernie" was a four letter man in track, football, baseball and basketball.

WILLIAM GEORGE—"Bill" was right guard in football and also manager of our baseball team this spring.

WILLIAM GLENNEY—"Bill" was manager of our good football team.

EDWARD HANSEN—"Eddie" played end on the football team.

THEODORE LUPIEN—"Ted" was captain of football and also made his letter in baseball playing left field.

MARCUS MORIARTY—"Squint" was a three letter man receiving letters in baseball, football, and basketball.

WALTER MOZZER—"Walt" played left guard in football, and threw the javelin on our well balanced track team.

LINCOLN MURPHEY—"Linc" was manager of our excellent basketball team. He also made his letter in football and track.

BRUNO NICOLA—"Nick" was a three letter man, receiving a letter in football, basketball and track.

ROGER SPENCER—"Bull" was a two letter man, playing tackle in football and throwing the javelin in track.

FRANK SCARLATO—"Frank" was captain of track. He holds the school's pole vault record, and played on the football team.

REGINALD WEST—"Reggie" played tackle in football.



Coaches

Kelley ~  
foot ball &  
baseball



Clark

basketball  
swimming



Bailey  
faculty advisor



Wigren-  
track



## ATHLETIC SUMMARY

1929-1930

### FOOTBALL

Manchester .....	0	East Hartford .....	6
Manchester .....	7	Middletown .....	0
Manchester .....	0	Bristol .....	0
Manchester .....	7	Meriden .....	19
Manchester .....	14	West Hartford .....	9
Manchester .....	32	Lewis High .....	0
Manchester .....	12	Buckeley .....	6
Manchester .....	25	Windham .....	12
Manchester .....	12	Alumni .....	7
	109		59

### BASKETBALL

Manchester .....	18	East Hartford .....	9
Manchester .....	32	East Hartford .....	22
Manchester .....	18	Rockville .....	15
Manchester .....	27	Alumni .....	15
Manchester .....	16	Bristol .....	26
Manchester .....	17	Meriden .....	12
Manchester .....	33	West Hartford .....	19
Manchester .....	27	Rockville .....	17
Manchester .....	22	Middletown .....	24
Manchester .....	34	Willimantic .....	21
Manchester .....	16	Bristol .....	32
Manchester .....	28	Meriden .....	22
Manchester .....	40	West Hartford .....	23
Manchester .....	19	Middletown .....	17
Manchester .....	20	Willimantic .....	33
	367		307

### BASEBALL

Manchester .....	9	Hartford Public High .....	2
Manchester .....	16	Rockville .....	7
Manchester .....	5	Middletown .....	3
Manchester .....	7	West Hartford .....	11
Manchester .....	7	Meriden .....	3
Manchester .....	4	East Hartford .....	2
Manchester .....	4	Bristol .....	2
Manchester .....	12	Meriden .....	3
	64		33

### TENNIS

Manchester .....	0	West Hartford .....	5
Manchester .....	5	East Hartford .....	0
Manchester .....	2	Bristol .....	3
Manchester .....	1	Meriden (Forfeited) .....	0
Manchester .....	3	Rockville .....	2
	11		10





FOLLIES OF 1930



"GIN"



"IT" GIRL



'31



"OH!"



"AH!"



STATUARY



CLOWNING





#### M. H. S. SWIMMING POOL

Few schools enjoy greater facilities for swimming and gymnastics than Manchester High School. Our swimming pool answers a very definite need in the problem of training children for safe and healthful use of their leisure time. Confidence, an important factor in learning to swim, is more easily gained while we are young. Swimming is required once a week during the fall and spring terms. An achievement record of individual students is posted, and as different form strokes are passed the student records her progression on this chart. Due to the size of the swimming classes, life saving is offered as an extra curriculum activity.

The pool, of regulation size, twenty by sixty feet is inspected by both state and town officials. The water completely changes twice every twenty-four hours. Showers are required, and all persons entering the pool are inspected. Tank suits which are required are supplied and laundered by the school.

Our gymnasium, with standard equipment affords a splendid opportunity for marching tactics and Danish and natural gym work. The girls wear shorts with white middies and short colored socks:—red for the Seniors; blue for the Juniors; orange for the Sophomores; and green for the Freshmen.





*"Haste thee, Nymph, and bring with thee  
Jest, and youthful Jollity."*





Is this a diploma which I see before me  
Its ribbon toward my hand?  
Come, let me clutch thee!

---

The study hall was silent as a tomb. Not a student whispered; not a paper rustled; not a pen scratched. It was midnight.

---

C. Heck: What should I get for this paper?  
Mr. Robinson: Chloroform, I should say.

---

W. Bendall (in Washington): Didn't day break about the time you came in this morning?  
Cubberly: No, that was the night falling.

---

Roses are red,  
Violets are blue,  
The joke that you miss  
Is the joke that's on you!

---

Heard in English: Shakespeare lived in Windsor with his merry wives.

---

O. Haefs: I always say what I think.  
E. Hansen: I wondered why you were always so quiet.

---

The first date in history was about 4000 B. C. I wonder who had it?

---

The evil each class does lives after it.

---

W. George: The girl I marry must be one who can take a joke.  
W. Glenney: That's the only kind you could ever get.

---

Mary had a little lamb,  
You have heard that tale before,  
Then she went and passed her plate  
And had a little more.

---

Revised hymn: Work for C. Q. is coming!

---

On reading Chaucer's "Canterbury Tales" in Senior English: Gosh! Chaucer must have dictated this stuff to a stenographer. Look at the spelling, will you?

---

Notice: Students who attend gym classes are requested not to speak to the dumbbells, join the Indian clubs, or let the horses run away with them.

---

Oh—"Somanhis" is a funny thing:  
The School gets all the fame,  
The Printer gets all the money,  
And the Staff gets all the blame!





*"No mortal thing can bear so high a price  
But that with mortal thing it can be  
bought."*





SMARTEST SUMMER  
— FASHIONS —

**Dress and Sport Wear  
Vacation and Travel Wear**

New and altogether different Styles are the Summer Modes, arriving daily from the fashion centers, yet priced to the prevailing spirit of **ECONOMY**.



**RUBINOW'S**

GARMENT FASHION CENTER

**DIEGES & CLUST**

"IF WE MADE IT, IT'S RIGHT"

**CLASS RINGS--FRATERNITY PINS**

**Charms and Medals for Every Sport  
Prize Cups and Plaques**

73 TREMONT STREET

BOSTON, MASS.



**EDWARD J. HOLL**

**REAL ESTATE**

— A N D —

**INSURANCE**

**OAKES' SERVICE STATION**

563 Main St.

So. Manchester, Conn.



PREPARE FOR A  
PROFESSION  
— a t —

**MIDDLESEX HOSPITAL**

Affiliation at Yale School of Nursing, Experience in Public Health  
Nursing, Courses in Chemistry and Psychology at Wesleyan,  
Lectures and Demonstrations at Connecticut Hospital,  
New Nurses' Home and Adequate Educational and Social Facilities

For Detail Information Write to  
**SUPERINTENDENT OF NURSES,**  
Middlesex Hospital, Middletown, Conn.



**PURE JERSEY MILK**

From TUBERCULIN and BLOOD TESTED COWS

**M. C. PECKHAM**

Dial 6813

431 Lydall Street

**OAK GROVE DAIRY**

G. H. SANKEY, Prop.

PRODUCER OF HIGH GRADE MILK AND CREAM  
FROM TUBERCULIN TESTED COWS

Telephone 7933

Oakland Street

COMPLIMENTS OF

**MONTGOMERY WARD & CO.**

South Manchester, Conn.

**PINEHURST SODA SHOPPE**

C. W. BIRCH, Proprietor

300 Main Street at Middle Turnpike

Telephone 3848

**HOTEL SHERIDAN BARBER SHOP**

SPECIAL ATTENTION GIVEN TO LADIES AND CHILDREN

P. PAGANI, Proprietor

Phone 3992

So. Manchester, Conn.

**ANDERSON & NOREN**

MEATS AND GROCERIES

Phone 4076

361 Center Street

So. Manchester, Conn.

**QUINN'S REXALL DRUG STORE**

873 Main Street

South Manchester

MEET ME AT THE FOUNTAIN

Quality and Service — — Prescriptions Our Specialty

FOR DELICIOUS ICE CREAM OR  
FRESH HOME MADE CANDY

—Think of—

**THE PRINCESS CANDY SHOP**

GEORGE M. PAZIONAS, Proprietor

COR. MAIN AND PEARL STS.

SO. MANCHESTER, CONN.



**SUPPORT THE KIWANIS KIDDIES  
KAMP IN HEBRON**

---

**KIWANIS CLUB**

Manchester

Connecticut

---

**WELL DRESSED YOUNG MEN**

— TRADE AT —

**GLENNY'S**

SOUTH MANCHESTER, CONNECTICUT

---

***The* DOUGAN DYE WORKS**

INCORPORATED

**CLEANSERS AND DYERS**

Harrison Street Phone 7155 So. Manchester, Conn.

---

**Don't Buy Real Estate or Insurance**

UNTIL YOU HAVE TALKED WITH

**ROBERT J. SMITH**

1009 Main Street So. Manchester, Conn.

---

**For Diamonds, Watches, Jewelry**

**MATTHEW WIOR**

999 Main Street So. Manchester, Conn.  
Next Door to Post Office

---

**ROBB'S GROCERY STORE**

"THE STORE WHERE SERVICE REIGNS"

EVERYTHING THE BEST

217 Center Street Phone 3816  
WILLARD ROBB, Prop.

---





COMPLIMENTS OF

**The Journal Publishing Co.**

*PRINTERS and PUBLISHERS*

Telephones 205-206

Rockville, Conn.





# Albert Steiger, Inc.

Hartford's Store  
of Specialty Shops

## The Man's Shop

Specializes in  
Collegiate  
Furnishings for  
Young Men.

## Junior Deb. Shop

Specializes in  
Youthful Fashions  
For Young  
Women.

---

## HARTFORD ATHLETIC SUPPLY CO.

OUTFITTERS TO SCHOOL AND  
COLLEGE ATHLETES

---

SPECIALIZING IN THE BETTER THINGS  
FOR SPORT

*Wholesale and Retail*

"YOUR PHYSICAL DIRECTOR KNOWS"

---

551 Main Street

Hartford, Conn.

OPPOSITE MUNICIPAL BUILDING



**IF IT IS A NEW CAR, GAS OR ACCESSORIES,**  
 you are in need of, it will pay you to buy at  
 home from any of the following.

**ACCESSORY DEALERS**

**Peter A. Baldwin**  
**AUTO PAINTING.**  
 73 So. Main St. So. Manchester, Ct.

**Campbell's Filling Station**  
*EARL J. CAMPBELL, Prop.*  
 275 Main St. So. Manchester, Ct.

**Center Auto Supply Company**  
*ERNEST BANTLY, Prop.*  
 155 Center St. So. Manchester, Ct.

**Depot Square Garage**  
*ERNEST ROY, Prop.*  
 241 No. Main St. Manchester, Ct.

**Manchester Auto Top Company**  
*WILBUR MESSIER, Prop.*  
 444 Center St. So. Manchester, Ct.

**Matthew Merz**  
 141 No. Main St. Manchester, Ct.

**P. J. Moriarty**  
 174 W. Center St. So. Manchester, Ct.

**Oakes' Service Station**  
 563 Main St. So. Manchester, Ct.

**Robinson's Auto Supply Co.**  
*ERNEST ROBINSON, Prop.*  
 415 Main St. So. Manchester, Ct.

**Schiebel Brothers**  
*ALFRED SCHIEBEL, Prop.*  
 69 So. Main St. So. Manchester, Ct.

**AUTOMOBILE DEALERS**

**Bett's Garage**  
*GEORGE L. BETTS, Prop.*  
**HUDSON—ESSEX MOTOR CARS**  
 127 Spruce St. So. Manchester, Ct.

**George A. Brown**  
**REO MOTOR CARS and**  
**SPEED-WAGONS**  
 8 Cooper St. So. Manchester, Ct.

**Cole Motor Sales**  
*W. A. COLE, Prop.*  
**WHIPPET and WILLYS-KNIGHT**  
**MOTOR CARS**  
 91 Center St. So. Manchester, Ct.

**The Conkey Auto Company**  
*D. FRANK CONKEY, Prop.*  
**STUDEBAKER and ERSKINE**  
**MOTOR CARS**  
 20 E. Center St. So. Manchester, Ct.

**Crawford's Auto Supply Co.**  
*A. E. CRAWFORD, Prop.*  
**MARMON and OLDSMOBILE**  
**MOTOR CARS**  
 103 Center St. So. Manchester, Ct.

**Mackley Chevrolet Company**  
*RALPH McNALLY, Pres.*  
**CHEVROLET MOTOR CARS**  
 10 E. Center St. So. Manchester, Ct.

**Madden Brothers**  
*JOSEPH MADDEN*  
**NASH MOTOR CARS**  
 681 Main St. So. Manchester, Ct.

**Robinson Auto Company**  
*RAYMOND ROBINSON, Prop.*  
**OAKLAND-PONTIAC MOTOR CARS**  
 599 Main St. So. Manchester, Ct.

**Schaller Motor Sales Company**  
*HENRY A. SCHALLER, Prop.*  
**DODGE MOTOR CARS**  
 634 Center St. So. Manchester, Ct.

**J. M. Shearer**  
**BUICK and MARQUETTE**  
**MOTOR CARS**  
 285 Main St. So. Manchester, Ct.

**Smith's Garage**  
*GEORGE S. SMITH, Prop.*  
**CHRYSLER MOTOR CARS**  
 30 Bissell St. So. Manchester, Ct.

**H. A. Stephens**  
**DeSOTO MOTOR CARS**  
**HUPMOBILE MOTOR CARS**  
 191 Center St. So. Manchester, Ct.

THE ABOVE ARE MEMBERS OF THE AUTOMOBILE DIVISION  
 OF THE "MANCHESTER CHAMBER OF COMMERCE"





Earn \$35.00 to \$40.00 a week as an operator in a pleasant,  
lucrative vocation. Call at the Schultz School of Beauty Culture,  
983 Main Street                      Ask for Booklet                      Hartford, Conn.

YOU CAN EARN WHILE YOU LEARN!

## **THE SCHULTZ SCHOOL OF BEAUTY CULTURE**

# **F L O W E R S**

“The Sweetest Things God ever made  
and forgot to put a soul into.”

—Henry Ward Beecher

## **Park Hill Flower Shop**

*L E A D I N G F L O R I S T S*

913 MAIN STREET

SO. MANCHESTER, CONN.





The Hartford Hospital Training School Graduating Class

— YOUR CAREER —

The Hartford Hospital Training School for Nurses offers you the opportunity of a professional career, if you are a High School Graduate.

In addition to many educational advantages, the school offers such recreation as professional Glee Club and Dramatic instruction, Basket Ball, Swimming, and Scouting. The Nurses' Residence is home-like and attractive. Students have an eight-hour day with one afternoon off each week and five hours off on Sunday.

The School is now, in its fifty-second year and has graduated eleven hundred and sixty nurses. The present enrollment is two hundred and thirty students. Classes are admitted in September and in February.

For further information address:

PRINCIPAL, HARTFORD HOSPITAL TRAINING SCHOOL  
Hartford, Connecticut

## F-L-O-W-E-R-S



THE PROPRIETY OF FLOWERS  
IS NEVER QUESTIONED — AND  
THEY NEVER FAIL TO SAY JUST  
WHAT YOU DICTATE.



FLOWERS FOR ALL OCCASIONS

# MILIKOWSKI, The Florist

HOTEL SHERIDAN BUILDING—SO. MANCHESTER, CONN.

Members of the Florist Telegraph Delivery Asso.



COMPLIMENTS OF  
**A FRIEND**

---

MEET AND TREAT  
—WITH—  
TREAT'S TASTY ICE CREAM  
—AT—

**Bidwell's Soda Shoppe**  
IT'S A REAL "TREAT"

---

**GRADUATION SUGGESTIONS**

GRUEN WATCHES \$25.00 to \$250.00

BENRUS \$12.50 to \$50.00

HAMILTON, ELGIN and WALTHAM'S

SHEAFFER PEN and PENCIL SETS  
RINGS, BEADS, BAR PINS, and MESH BAGS

**F. E. BRAY, JEWELER**

645 MAIN STREET

MANCHESTER, CONN.

---

C O A L    —    —    —    F U R N A C E    O I L

**G. E. Willis & Son, Inc.**

**MASON'S SUPPLIES**

MANCHESTER

—    —    CONNECTICUT



# NORTHEASTERN UNIVERSITY



## DAY DIVISION

### THE SCHOOL OF ENGINEERING

In co-operation with engineering firms, offers five year curriculums leading to the Bachelor of Science degree in the following branches of engineering.

Civil Engineering  
Mechanical Engineering  
Electrical Engineering  
Chemical Engineering  
Industrial Engineering

### THE SCHOOL OF BUSINESS ADMINISTRATION

Co-operating with business firms, offers five year collegiate courses leading to the degree of Bachelor of Science in the following fields of business.

Accounting  
Banking and Finance  
Business Management

---

The Co-operative Plan of training enables the student to combine theory with practice and makes it possible for him to earn his tuition and a part of his other school expenses.

---

For catalog or any further information write to:

## NORTHEASTERN UNIVERSITY

MILTON J. SCHLAGENHAUF, Director of Admissions  
BOSTON, MASSACHUSETTS



**JOHN I. OLSON**  
**PAINTER and DECORATOR**

WALL PAPER — PAINTS — PICTURE FRAMES

699 MAIN STREET

SO. MANCHESTER

PHONE 6854

**THE TEXTILE STORE**

Specializing in Cotton Piece Goods, Silks, Woolens, Draperies, Curtains,  
Domestics, Blankets, Spreads, Linens, Ladies' Hosiery and Underwear.

"GROWING ON VALUE"

**THE TEXTILE STORE**

**HOLDEN—NELSON CO. INC.**

853 Main Street

So. Manchester, Conn.

Dial 8657

"MANCHESTER'S LARGEST CASUALTY AGENCY"

1099 Main Street

Telephone 6367

**GARRONE'S MARKET**

(THE STORE OF QUALITY)

**MEATS—FRUITS—VEGETABLES**

**ARTHUR A. KNOFLA**

REAL ESTATE

INSURANCE

MORTGAGES

"A LOT MEANS A HOME AND A  
HOME MEANS A LOT"

875 Main Street

South Manchester

**Manchester Construction Co.**

So. Manchester, Conn.

**FLORENCE'S DELICATESSEN**

Corner Main and Maple Streets

F. KELLEY, Proprietor

IMPORTED AND DOMESTIC DELICACIES

HOME COOKED FOOD

**SHOES FOR GIRLS**

**FIT — STYLE — SERVICE**

**MISS NAVEN**



# THE SAVINGS BANK OF ROCKVILLE

ROCKVILLE, CONNECTICUT

---

INTEREST RATE **5½%** On All Deposits

---

DEPENDABLE  
— SOUND —  
SUCCESSFUL

We Welcome Deposits by Mail

---

## R. G. RICH

---

## INSURANCE

---

Tinker Building

Manchester, Conn.

---

### ROBERT DONNELLY

WATCHMAKER AND JEWELER

515 Main Street

So. Manchester, Conn.

OLLENDORFF WATCHES

For the Graduate, Complete With Bracelets

**\$33.50 and up.**

CONKLIN, WATERMAN'S AND CHILTON PENS

---

### ROBERT DONNELLY

AT THE CENTER

SO. MANCHESTER, CONN.



Compliments of

# MARLOWS

DEPARTMENT STORE

863-7 MAIN STREET

ORFORD BUILDING

SOUTH MANCHESTER, CONN.

---

## MANCHESTER PLUMBING & SUPPLY CO.

877 MAIN STREET

SOUTH MANCHESTER, CONN.

---

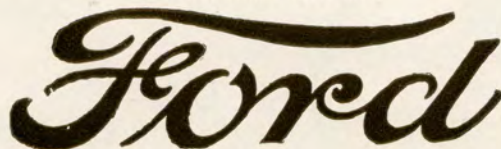
## A. G. SPALDING -- ATHLETIC GOODS

"IF IT'S HARDWARE—WE HAVE IT"

---

## MANCHESTER MOTOR SALES CO.

Authorized Dealers



**THE UNIVERSAL CAR**

New Cars, Used Cars, Fordson Tractors, Parts, Service

1069 Main Street, Tel. 5462 So. Manchester, Ct.

---

ESTABLISHED 1853

## C. E. HOUSE & SON, INC.

HEAD TO FOOT CLOTHIERS

---

Ready-Made Clothing, Hats, Caps, Men's  
Furnishings. Fine Footwear for  
the Whole Family.



ENGRAVINGS

IN THIS ANNUAL BY THE

Canton Engraving

— A N D —

Electrotype Co.

OF CANTON, OHIO.



1-8-7-7

1-9-3-0

**For 52 Years the Leading Wholesale Grocery  
House in Hartford and Vicinity**

Distributors of the Celebrated Brands of  
**Half Moon Tea and Kibbe's Quality Coffee**

**The E. S. KIBBE CO.**

HARTFORD, CONN.

**SPECIALIZE**

—IN—

**SHORTHAND**

—AT—

**SUMMER SCHOOL**



High School graduates can get better positions with a few months intensive training in **SUMMER SCHOOL**.

**THE CONNECTICUT BUSINESS COLLEGE**

G. H. WILCOX, Principal

ODD FELLOWS BLOCK

SO. MANCHESTER



— THE —

## F. T. Blish Hardware Co.

793 MAIN STREET

SO. MANCHESTER, CONN.

MANCHESTER'S MODERN HARDWARE STORE

---

### SPORTING GOODS

**Baseballs — Basketballs — Guns and Ammunition — Boxing Gloves — Fishing Tackle  
Tennis Rackets and Tennis Balls**

---

## HULTMAN'S

917 MAIN STREET

SO. MANCHESTER

Clothing, Shoes, Hats, Furnishings,

---

Quality Merchandise Reasonably Priced

---

If you are particular about your Haircutting  
and shaving—call at

## MINOR'S BARBER SHOP

983 MAIN STREET

CHENEY BLOCK

Over Farr's Store



A L L  
**PHOTOGRAPHS**

IN THIS BOOK

Made by—

**WARREN KAY**  
**VANTINE STUDIO**  
(INCORPORATED)

---

**SCHOOL and COLLEGE PHOTOGRAPHS**

OUR SPECIALTY

---

160 Boylston Street

Boston, Mass.



*The J.W. Hale Company*  
DEPARTMENT STORE · SO. MANCHESTER, CONN.

## *New Summer Frocks*



for every summer  
daytime occasion

**\$10 and \$16.75**

It would be impossible to try to describe the lovely daytime and sport-wear creations in this space. We simply urge you to come in and see this new display of SUMMER APPAREL—you will be charmed when you see these smart new things—so many of which will just suit your type.

The Season's modes are marked by the presence of the bolero, cape, the shorter sleeve, the separate jacket, and the vogue of shantungs, silk crepes, silk piques and silk damask.  
White and Tints.

HALE'S APPAREL DEPT.—Main Floor—Rear



# Fradin's

## WOMEN'S APPAREL SHOP

757 MAIN STREET

SO. MANCHESTER, CONN.

### GRADUATION GIFTS

Of a character that will be with the graduate long after Happy School  
Days are over.

Wrist Watches	\$9.75 and up	Pen and Pencil Sets	\$3.50 and up
Strap Watches	\$7.50 and up	Stone Set Rings	\$10.00 and up
Diamond Rings	\$25.00 and up	Cuff Buttons	\$2.00 and up

In Leather, Address Books, Travel Books, Line a Day Books,  
Day by Day Books. Albums. Write a Line Albums.

**THE DEWEY RICHMAN CO.**  
JEWELERS — STATIONERY — OPTICIANS  
"THE HOUSE OF VALUE"

Compliments of

## Manchester Water Co.

Manchester — — — Conn.

## GEORGE H. WILLIAMS

Incorporated

Offers Congratulations to the Class of 1930.

**MEN'S WEAR THAT MEN WEAR.**



THE SIGN OF  
GOOD ICE CREAM

MADE AT  
SO. MANCHESTER CONN.



Tel. 5250

SUMMIT STREET

So. Manchester

---

*We* **Cater** *To*

**Parties, Weddings, and  
Entertainments**

SOLD IN ALL THE LEADING SODA SHOPS



THE  
*Morse College*

Offers Advanced Courses in  
**BUSINESS ADMINISTRATION**  
**SECRETARIAL SCIENCE**  
**COMMERCIAL**  
**NORMAL**  
**HIGHER ACCOUNTANCY**

---

WRITE FOR BULLETIN

---

The Morse Position Bureau places all Morse Graduates in excellent positions which assure rapid rise in the business world.

*Morse College*

183 Ann Street

Hartford, Conn.



# Thrift= Nature's Own Scheme

IT is a part of Nature's plan for her creatures to save. Witness the dog bury the bone in order that he may not have to go hungry on the morrow! Watch the squirrel hide away acorns for the winter! Notice how the bees work industriously, storing away honey!

NATURE instilled the habit of thrift into these lesser creatures, we call it instinct.

BUT Nature endowed us with intelligence, hoping we would realize the need for thrift instead of being driven to it by instinct.

ARE you choosing to do the thing Nature requires the lower creatures to do? If not, you should begin saving now!

---

## THE SAVINGS BANK OF MANCHESTER

SOUTH MANCHESTER, CONN.

---

**This Bank Pays Interest at 5% per annum  
Compounded Quarterly**



**A PROGRESSIVE PAPER  
IN A PROGRESSIVE TOWN  
MANCHESTER EVENING HERALD**

**T**HE HERALD gives you the latest state, national and world news and "breaks" on many big stories you don't see in other afternoon dailies, freshest and biggest quantity of local news, bright features and clever comics.

**T**HE HERALD gives the advertiser complete coverage in the Manchester trading area. Most satisfying results are obtained at the lowest daily newspaper rate offered in the entire state of Conn.

*Member Of—*

THE ASSOCIATED PRESS  
AUDIT BUREAU OF CIRCULATIONS

FULL SERVICE CLIENT OF N. E. A.

GUARANTEED DAILY CIRCULATION 5,527

**SOUTH MANCHESTER CANDY KITCHEN**

**For Quality and Tasty Food**

—ALSO—

**Homemade Candy and Refreshments**

Cor. Main and Birch Street

Next to Glenney's

**MINER'S PHARMACY**

F. E. MINER, Proprietor

**QUALITY**

**SERVICE**

903 MAIN STREET

SO. MANCHESTER, CONN.



# The Bentley School of Accounting *and* Finance

STARTED IN 1917 WITH 29 STUDENTS  
ENROLLMENT THIS YEAR 2648 STUDENTS

It is the largest professional school in the world devoted exclusively to training men for specialized positions in accounting and finance. Men only are admitted. Students are enrolled from 18 states.

Graduation from high school required for admission.

Completion of the courses in the Day division requires two years. There are no electives.

During the past ten years our graduates have demonstrated the thoroughness of their training by the excellence of their work. The success achieved by them has been a marked aid in establishing among business men a reputation for Bentley training and a preference for Bentley graduates. Some of the country's largest corporations send representatives to the school each year to select men from our senior class to develop in their organizations.

It is one thing to know accounting principles and quite another thing to apply them as a skilled technician. At this school great emphasis is placed on perfection of technic, thoroughness, and facility in performing accounting work.

Bentley graduates are employed as office managers, cost accountants, private auditors, statisticians, credit men, comptrollers, assistant treasurers, treasurers, branch managers, general managers, teachers of accounting, and public accountants. Those under twenty-five years of age who have had no practical experience start at a salary of about \$1680 a year, and make an average advance of approximately \$250 a year. A considerable number of graduates under thirty-six years of age are earning from \$5,000 to \$12,000 a year.

Employers who apply to us for graduates emphasize the importance of personality, ranking it second only to technical proficiency.

We are particularly interested in enrolling men of pleasing personal appearance—commonly referred to as the "clean-cut, up-and-coming" type. Unless such a man is serious-minded and is willing to work hard to acquire his professional training, Bentley's is no place for him.

Excellent living accommodations are available in our dormitories and fraternity houses. Catalog mailed on request.

Harry C. Bentley, C. P. A., President

THE BENTLEY SCHOOL OF ACCOUNTING and FINANCE.

921 Boylston Street. Boston, Massachusetts



**STATE BEAUTY PARLOR**

SPECIALIZING IN

**EDMOND PERMANENT WAVING**

— a n d —

**ALL BRANCHES OF BEAUTY CULTURE**

755 Main Street Telephone 7266 So. Manchester, Conn.

WHITEMAN, APPOLLO, LOVELL and COVELL CANDY

**THE SODA SHOP**

and—AT THE CENTER—

**THE STATE SODA SHOP**

747 Main Street Manchester, Conn.

Sperber and Turkington, Prop.

**Bidwell's Soda Shoppe**

**MAGNELL DRUG COMPANY**

1095 MAIN STREET MANCHESTER, CONN.

**PRESCRIPTION DRUGGISTS**

Compliments of

**KNIGHTS of COLUMBUS**

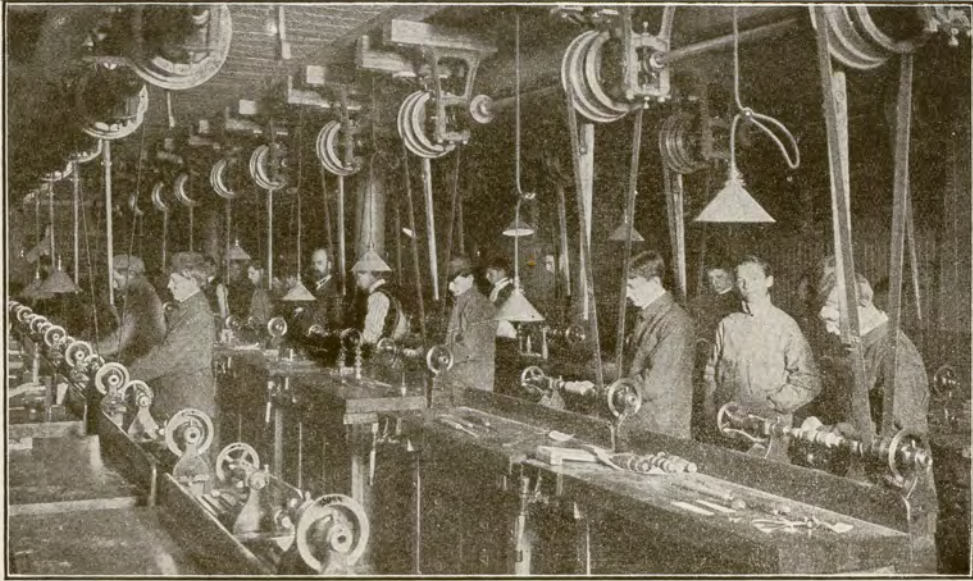
MANCHESTER, CONNECTICUT

Compliments of

**ANCIENT ORDER of HIBERNIANS**

MANCHESTER CONNECTICUT





Courtesy: The Stuyvesant High School, New York, N. Y.  
(View of Original Installation in old building of 30 Clutches.)

**THE JOHNSON FRICTION CLUTCH**  
AS USED ON LINESHAFTING IN MANUAL TRAINING DEPARTMENTS.  
Students or Schools furnished with Catalog on request—Ask for Catalog 'M. T.'  
**CARLYLE JOHNSON MACHINE COMPANY**  
MANCHESTER, CONNECTICUT

## HARTFORD-SILVER LANE-SOUTH MANCHESTER BUS LINE, INC.

MINIMUM FARE, 10 Cents — THROUGH FARE, 20 Cents

**In Effect April 27, 1930.**

Subject to Change Without Notice

**NOT RESPONSIBLE FOR DELAYS**

We will at all times, give full consideration to suggestions for  
improvements in the service.

APPROVED BY THE PUBLIC UTILITIES COMMISSION

Phone 2-2928

F. H. GEER, Manager

PHONES 6-2133—2-1372

**ARRANGEMENTS MAY BE MADE FOR SPECIAL PARTIES**



COMPLIMENTS OF

**CASE BROTHERS**

(Incorporated)

---

**HIGHLAND PARK, CONNECTICUT**

---

COMPLIMENTS OF

**T H E  
O R F O R D S O A P  
C O M P A N Y**





FOR fifty-five years Watkins Brothers has offered its patrons furniture of which they could be justly proud. For years it has been known throughout New England as one of the foremost authorities on interior decorations.. throughout the United States as one of the finest small town stores. Today, as ever before, Watkins Fine Furniture, together with the many unique Watkins Services, is brought to you at prices no higher, and in many cases much lower, than you would pay elsewhere for the ordinary kind.

**WATKINS**  
**BROTHERS, Inc.**





**Two-year, College-grade Courses**

Accounting—Finance  
Business Administration  
Secretarial Science  
Normal Commercial

**Standard [Short] Business Courses**

*Graduates Assisted to Preferred Positions*

Part-time employment when needed.  
Supervised homes at reasonable rates.  
Athletic director and coaches.

*Send for Catalog*

**BAY PATH INSTITUTE**

100 Chestnut Street

Springfield, Massachusetts

*Branch Schools: Keene, N. H., Brattleboro, Vt.*



Lions are  
Community Builders

**BE A LION**

**LIONS CLUB**

**Of Manchester**

SERVICE — — COURTESY — — SKILL

*Dougherty's Barber Shop*

*Special Attention Given to Ladies and Children*

JOHNSON BLOCK

SOUTH MANCHESTER

**THE PINE STREET SODA SHOPPE**

WE SERVE SANDWICHES AND  
FRO-JOY ICE CREAM

95 PINE STREET

PHONE 3888

**SPECIAL AVIATION GROUND COURSE**

A summer course for high school undergraduates to be given by Mr. Thompson, supervising instructor at the Curtiss-Wright School of Aviation, 55 Allyn Street, Hartford.

FIRST CLASSES JULY 7th—TUITION \$18.00.

\$15.00 Will be applied towards advance Ground and Flying Courses. Application for Entrance and choice of Recitation Periods must be made at once.

Summer Class in Regular Ground Course will begin  
TUESDAY, JUNE 24th.

Private, Limited Commercial and Transport Pilot Courses.

Hartford, Conn.  
Brainard Field

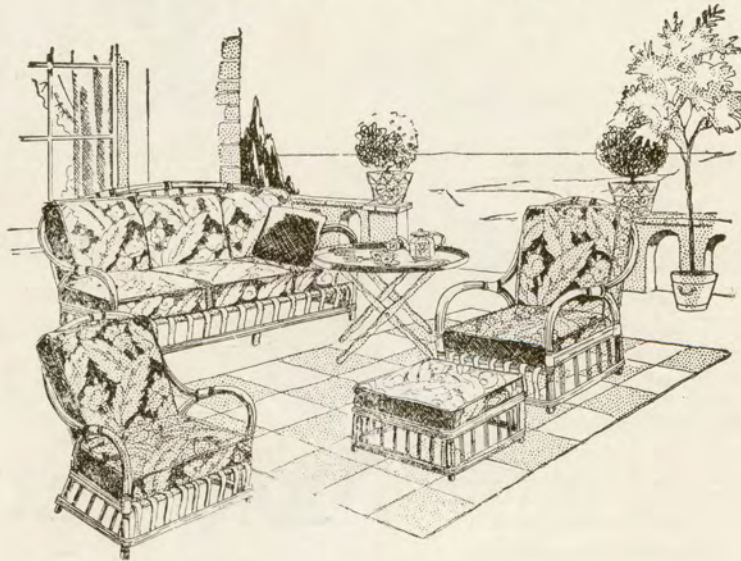
**Curtis-Wright Flying Service**

Telephone  
5-2536



# KEITH'S

*Where you can afford to buy good furniture*



## Summer Comfort for your home!

**C**OLOR . . charm . . comfort! The three essential qualities that will enable you to have a glorious Summer are to be found here at Keith's in the largest display of furniture for sunroom, porch and out of doors ever to be shown on our floors. Literally a paradise of summer comfort for your home. Whatever your requirements along this line may be we are confident you can fulfill them here at a pleasingly moderate cost. And, too, you will enjoy selecting them in the colorful and summery atmosphere that our store now presents.

**Keith's**  
Opposite High School  
South Manchester



## Faculty Autographs

J. A. Meplanck

James Quincy

Ralph W. Proctor

Elizabeth L. Olson

Geo. C. Walsh

Carrie B. Spigare

Helen J. Estes

Francis G. Lee

Theda J. Anderson

Ethel MacDonald

E. Marion Dorward

Chester L. Robinson

Marquette Oats

Marion A. Cass

Geraldine E. McLaughlin

Victoria H. Frauszen

A. K. Potter

Minnie B. Anderson

Eugenia Walsh

Beulah E. Todd

Dorothy J. Goodridge

Ester J. Nugum

P. S. E. Mary

Mary C. Mc. Givie

Gertrude Obermeyer

Mary L. Burks

Edson M. Bailey

Helene M. Smith

Mildred Tucker

Florence B. Hopkins

Arland Jenkins

Charles L. Wigren

Thomas F. Kelly

A. Virginia Howard

W. J. Clarke

Ruth L. Parker

Harriet D. Boudon

Ellenor Rogers



# Autographs

---



