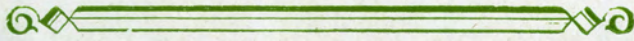


SOMANHIS




1932



*“Onward its course the present keeps,
Onward the constant current sweeps
Till life is done.”*



THE ENTRANCE TO MANCHESTER HIGH



SOMANHIS

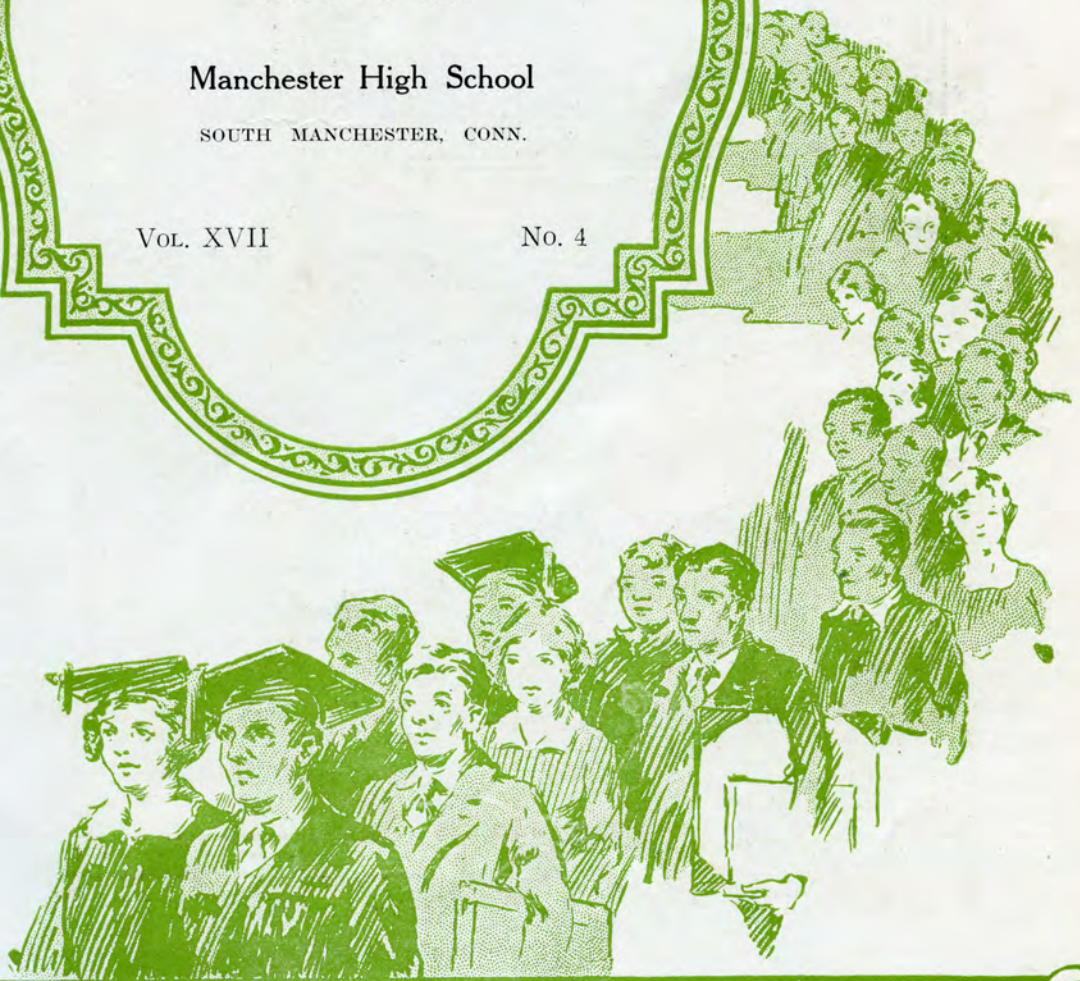
PUBLISHED BY
CLASS OF 1932

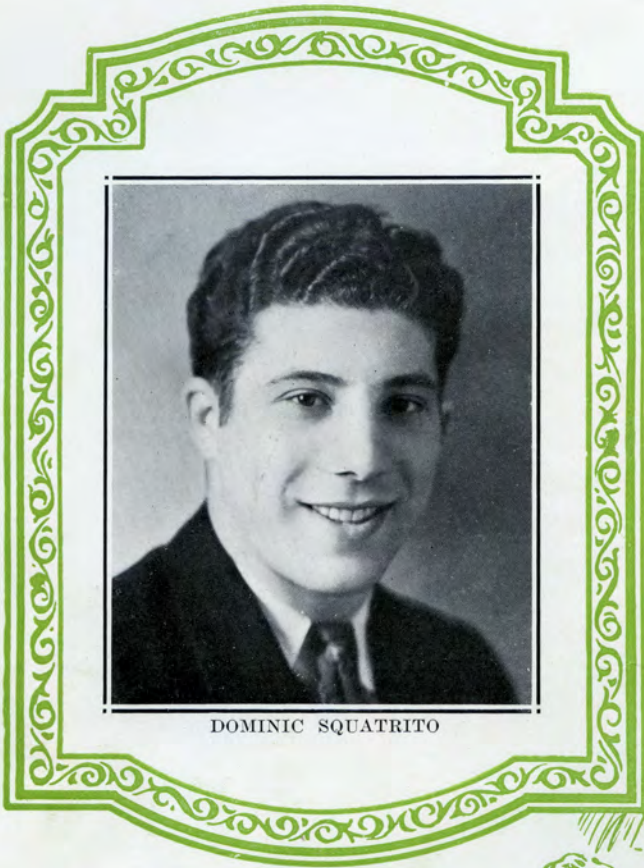
Manchester High School

SOUTH MANCHESTER, CONN.

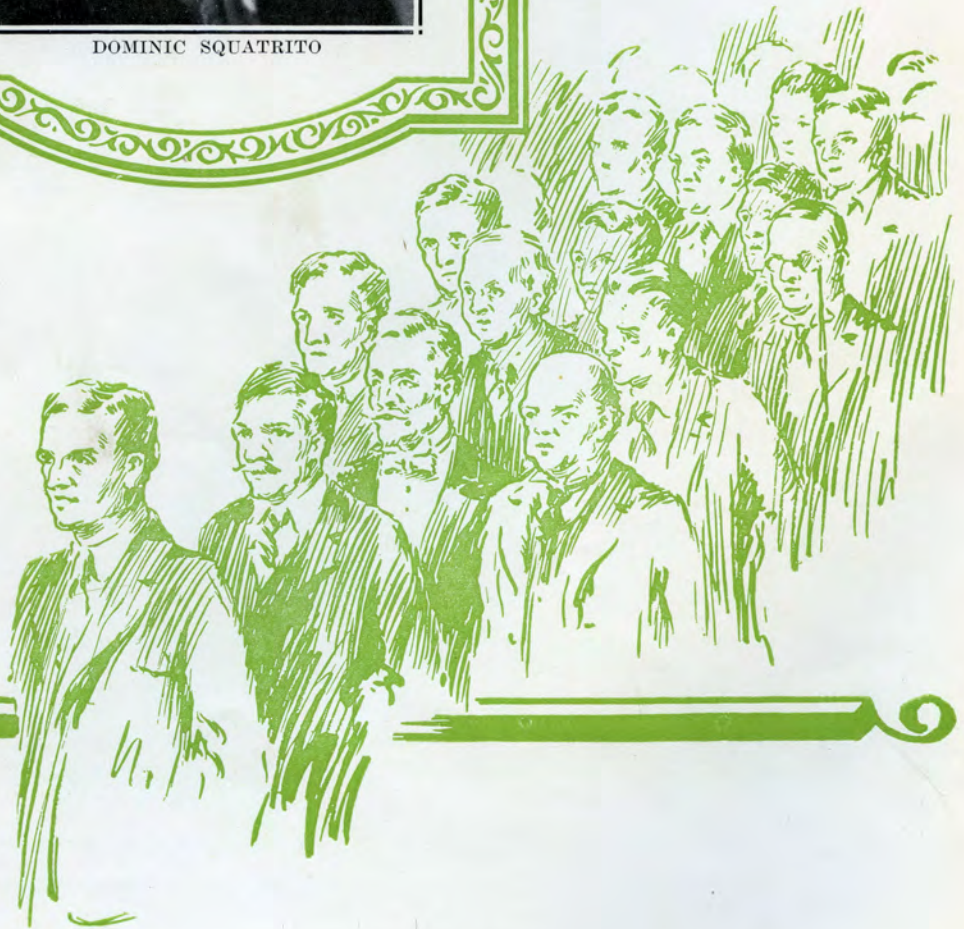
Vol. XVII

No. 4





DOMINIC SQUATRITO





In Memoriam

Dominic Squatrito

A comet came from out the eastern sky,
Leaving behind a dazzling trail of light
That pierced the inky blackness of the night
With scarlet splendor, dazzling the eye.

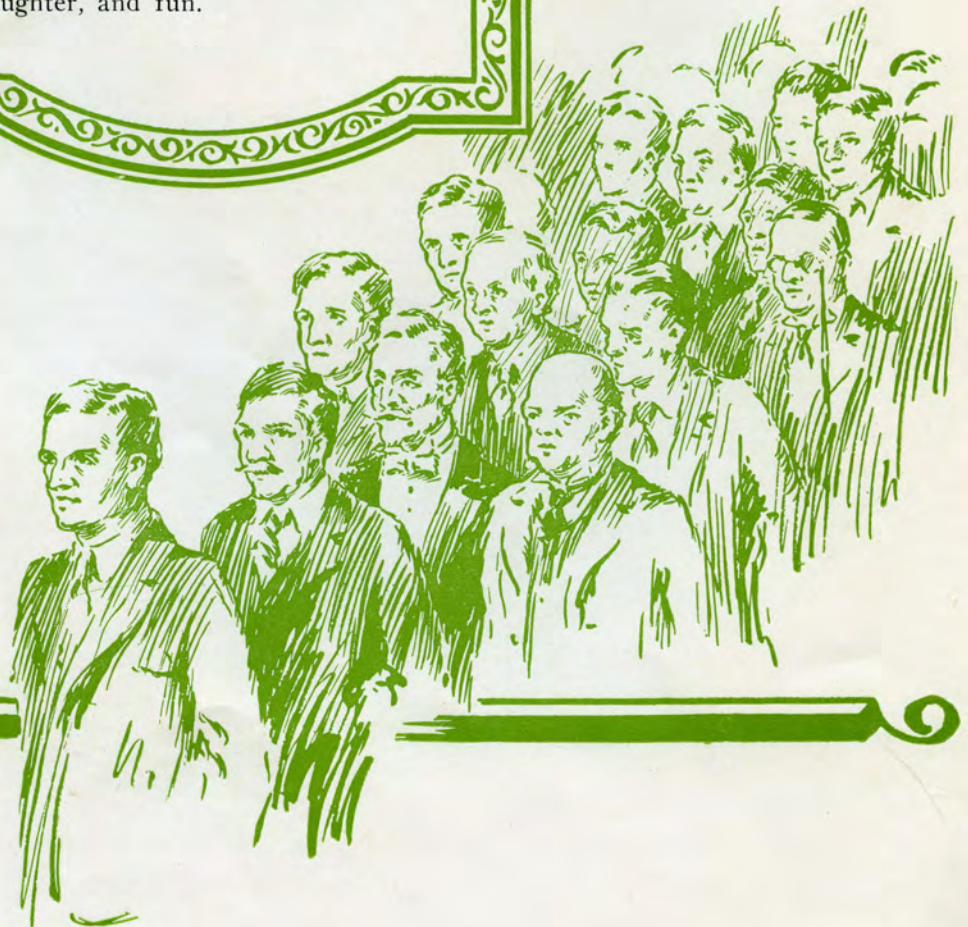
He was a human meteor, keen of mind,
Swift as the lightning flash, powerful of
frame,
Till cruel Disaster's heavy gauntlet came
And crushed him, leaving only dust behind.

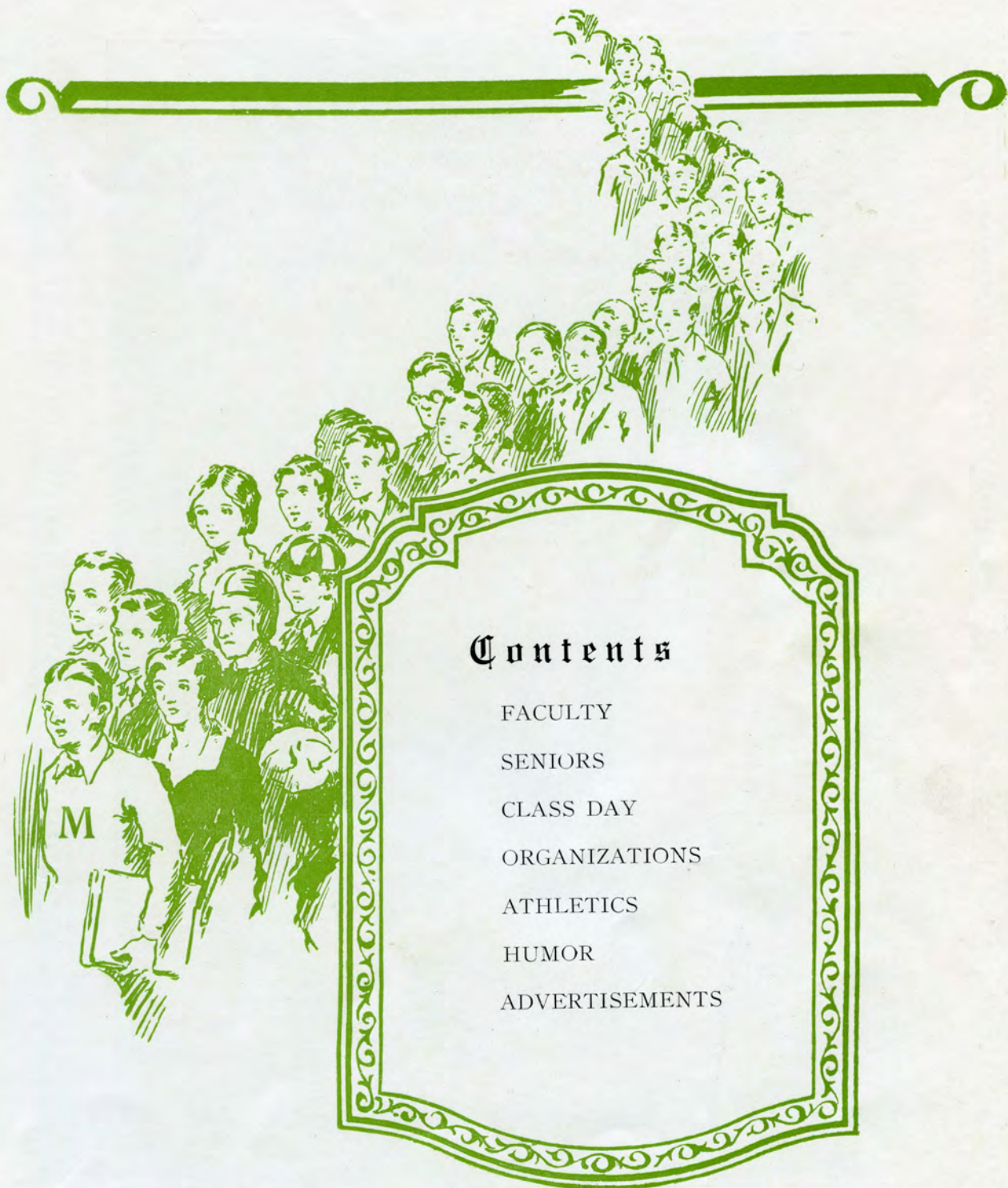
Can he be gone? It was not long ago
He stood triumphant on the battlefield
Amid the mighty roaring of the crowd.
The sky is dark again, but still we know
His soul is free although his lips are sealed.
He is not dead. He lives beyond the cloud.

James Toman

Foreword

The purpose of this year-book is to preserve forever the happiness of the fleeting school days of the class of 1932. We hope that in the years to come, it will be treasured not only as a record of school achievement and history, but also as a delightful storehouse of memories. Within its covers are a thousand glorious impressions—reminders of real friendships, happy associations, thrills, laughter, and fun.





Contents

FACULTY

SENIORS

CLASS DAY

ORGANIZATIONS

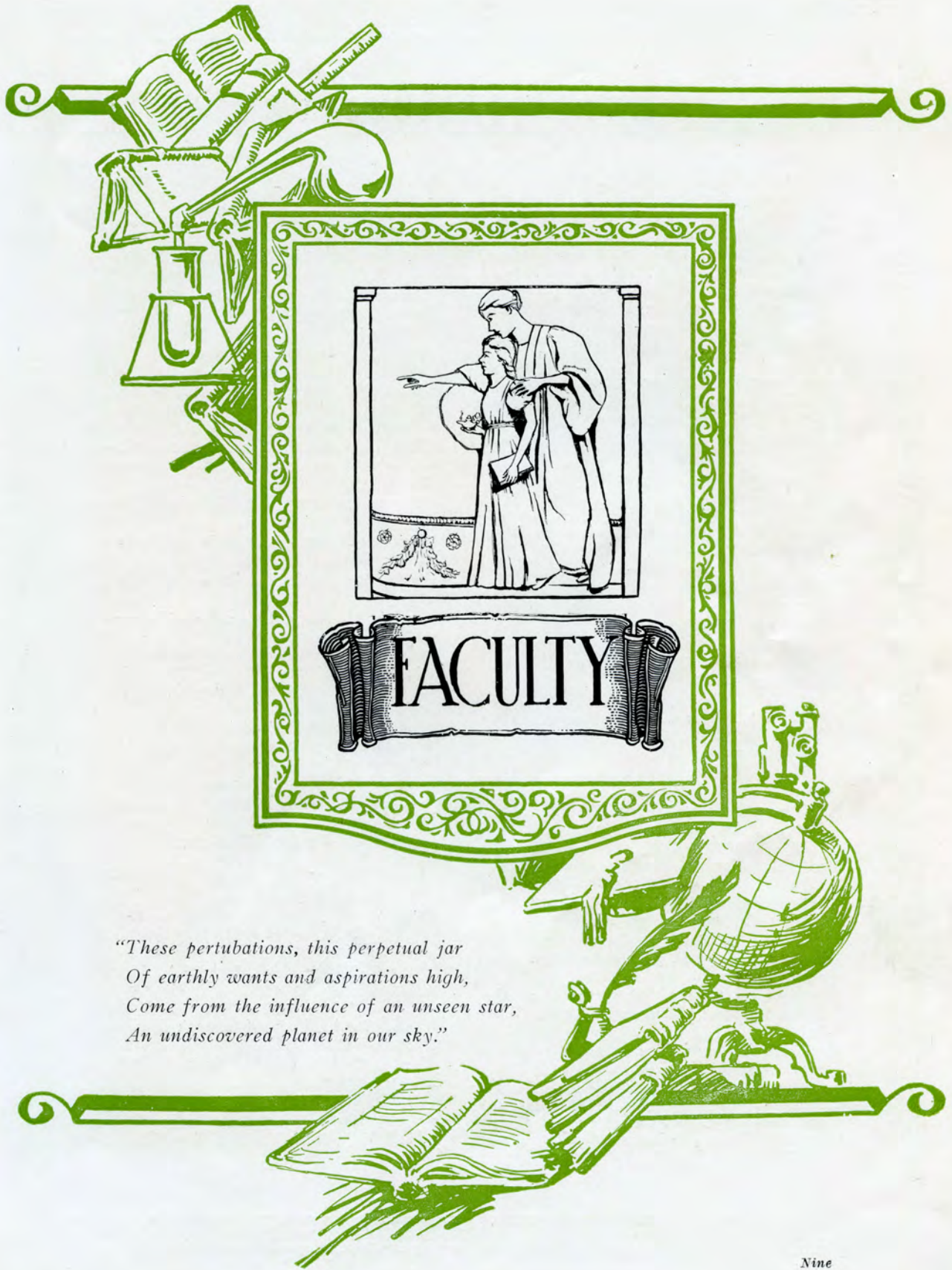
ATHLETICS

HUMOR

ADVERTISEMENTS



EDUCATIONAL SQUARE



*"These perturbations, this perpetual jar
Of earthly wants and aspirations high,
Come from the influence of an unseen star,
An undiscovered planet in our sky."*

Faculty Directory

Principal Clarence Paul Quimby, Bates, B. A., Harvard, Ed. M.

Vice-principal Elizabeth L. Olson, Mt. Holyoke, B. A., Harvard, Head of Mathematics Department.

Vice-principal Arthur L. Illing, Wesleyan University, B. S., Boston University, Mathematics.

Huldah J. Anderson, Plymouth Normal, Typewriting and Stenography.

Edson M. Bailey, New Hampshire University, B. S., Director of Vocational Guidance, Bookkeeping.

Mary Bowen, Boston School of Domestic Art and Science, Sewing.

Mary L. Burke, College of New Rochell, Ph. B., English.

Marion Casey, Syracuse University, B. A., English.

Wilfred J. Clarke, New Haven Normal School of Gymnastics, Physical Training for Boys.

Harriet D. Condon, Massachusetts School of Art, Art.

Corinne Davis, Salem Normal, Short-hand and Typewriting.

E. Marion Dorward, New England Conservatory of Music, Institute of Music Pedagogy, Music.

Philip L. Emery, Bates, B. S., Biology.
Elsie K. Emery, University of New Hampshire, B. S., Cornell, Biology, General Science.

Helen J. Estes, Wheaton, B. A., Harvard, Ed. M., English.

Henry L. Farr, Bowdoin College, B. A., Harvard, Ancient History.

Blanche Feder, Boston School of Physical Education, University of New Hampshire, Physical Education for Girls.

Ione Fellows, Middlebury College, B. A., New York State College, English.

Nathan B. Gatchell, Connecticut Agricultural College, B. S., University of California, English.

Charlotte Gillette, Worcester Domestic Science School, Simmons College, Sewing.

Hugh S. Greer, Connecticut Agricultural College, B. S., Science.

James L. Higgins, Burdett College, Salem Teachers' College, B. S. Ed., Boston University, M. E., Bookkeeping, Commercial Law, Salesmanship, Business Mathematics.

Florence B. Hopkins, Brown University, B. A., Harvard University, Ed. M., English.

Arland L. Jenkins, Bates, B. A., English and Economics.

Thomas F. Kelley, Bates, B. A., Algebra, General Science.

Avis M. Kellogg, Bay Path Institute, Boston University, Typewriting.

Elizabeth Lee, Danbury Normal School, Connecticut College for Women, B. A., Social Science.

Jeanne M. Low, Bates, B. A., Middlebury College, M. A., Sorbonne, Paris, Diplome, French.

Mary McGuire, New Britain State Normal, New York University, B. S., Mathematics.

Marguerite Oates, Mt. Holyoke, B. A., Social Science.

Gertrude Oberempt, Brown University, Ph. B., Civics.

Helen Page, Columbia University, B. S., English.

Dwight E. Perry, University of Minnesota, B. S., University of Colorado, Columbia University, M. A., Mathematics.

Arthur N. Potter, Brown University, Ph. B., University of Chicago, M. A., Social Science.

Selah Richmond, Earlham College, B. A., Harvard University, English.

Chester L. Robinson, Colby College, B. S., Chemistry and Physics.

Helen M. Smith, Framingham Normal School, Home Economics.

Carrie B. Spafard, Wesleyan, B. A., Latin.

Beulah E. Todd, Brown University, B. A., French and German.

Charles E. Turner, Massachusetts State College, B. S., General Mathematics and General Chemistry.

Avis C. Walsh, Wellesley, B. A., Head of English Department.

Eugenia Walsh, Connecticut College for Women, B. A., Head of French Department.

Nellie Q. Warren, Bay Path Institute, Business Training.

Charles L. Wigren, Wesleyan, B. A., Mathematics and French.

Janet E. Wilcox, Smith College, B. A., Latin.



FACULTY

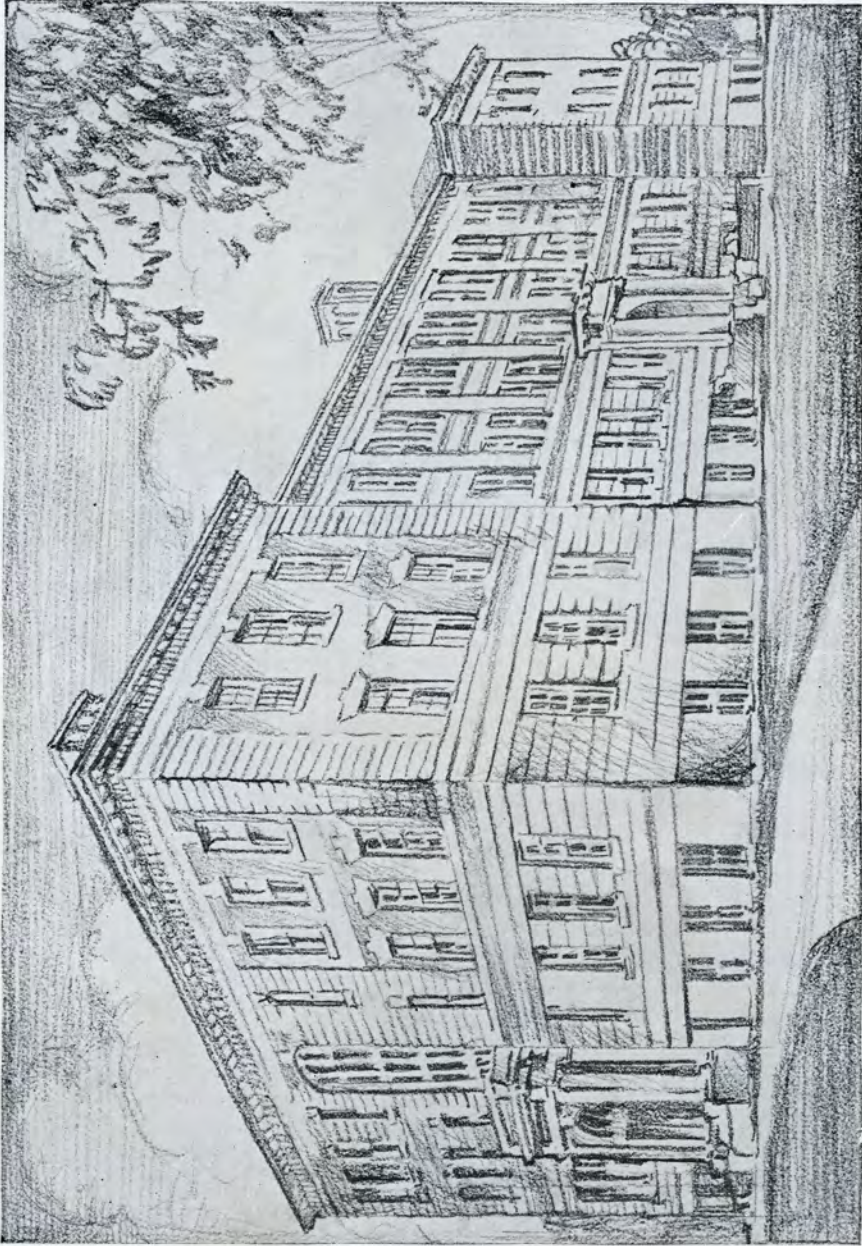
Seated: Misses. Anderson, Hopkins, Walsh, Fellows, A. Walsh, Estes, Wilcox.
 Second Row: Misses Rogers, Page, Feder, Casey, Messrs. Turner, Clark, Kelly, Gatchell, Perry, Emery.
 Third Row: Miss Lee, Mrs. Warren, Misses Richmond, Olson, Spafard, Todd, Kellogg, McGuire, Oates, Oberempt, Messrs. Potter, Greer.
 Fourth Row: Messrs. Wigren, Bailey, Superintendent Verplanck, Misses Davis, Smith, Mr. Robinson, Miss Low, Mr. Higgins, Miss Burke, Messrs. Farr, Illing, Jenkins.
 Rear: Principal Quimby.



SATISFACTION

A suggestion,
 And then a plan;
 An undertaking,
 A praising hand;
 An obstruction
 That's overcome;
 At last completion—
 A product
 Done! !

J. T., '33



MANCHESTER HIGH SCHOOL



JAMES O'LEARY

Seniors

*"Encamped beside Life's rushing stream,
In Fancy's misty light
Gigantic shapes and shadows gleam
Portentous through the night."*

CLASS OFFICERS

Class President, JAMES O'LEARY
Class Vice-President, EDWINA ELLIOTT
Secretary, BEATRICE PERRETT
Treasurer, DOMINIC SQUATRITO

CLASS SONG

Our school life's been one wondrous book;
And, as we turn its pages here,
We catch a glimpse of what we've shared
With loyal classmates grown so dear.

Our num'rous friendship pages have
Been written deep in every heart.
They're sturdy, true, and beautiful—
In all our lives they'll form a part.

This page is smudged with dust from sports;
From baseball, football, basketball;
We've joined our schoolmates rousing cheers
In answ'ring Game's exciting call.

The Future—that's a blank page now,
A Fate our destiny now holds
Extends her hand; when we react
Draws back, and not a line unfolds.

Esther Tack, '32

CLASS MOTTO

"Spectemur Agendo"

VICTORIA ABRAITIS "VEE"

"We grant, although she had much wit, She was very shy of using it."

Honor Roll 15



IRVING AUGUST

"If he takes you with an argument, He'll bray you in a mortar."

JOANNA ACETO "JO"

"Refinement creates beauty everywhere."

Honor Roll 8; French Club.



BARBARA BADMINGTON "BOBBIE"

"While words of learned length and thundering sound Amazed the rustics rang'd around."

Argonaut Club 1; Secretary Junior Red Cross 1; Neophyte Sodality 1; Latin Club 1; Vice-President of Class 3; Ring and Prom Committee 3; Sock and Buskin 3, 4; Cast of "Bab" 4; Assistant Editor "Somanhis" 4; Honor Roll 19; Honor Student.

IDA ANDERSON

"A hustling, energetic sort, A lively friend and rare good sport."

Leaders' Class 3, 4; Junior Red Cross 1; Girls' Basketball 2; Girls' Swimming Team 3; Pep Club 4; Girl Reserves 4; Honor Roll 11.



LUCIUS BATSON "BAT"

"Ambition caused Caesar's downfall, But it shall not cause mine."

Torch Club 1; Orchestra 1, 2, 3; Interclass Basketball 4; Honor Roll 1.

IRMA ANDERSON

"As merry as the day is long."

Leaders' Class 3, 4; Junior Red Cross 1; Basketball 2, 3; Swimming Team 3; Glee Club 2; Honor Roll 9.



RAYMOND BERGER "RAY"

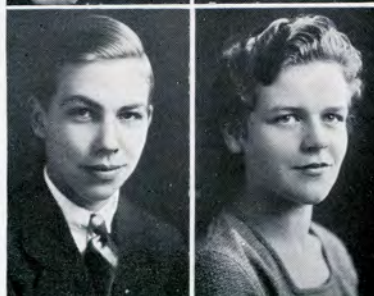
"The strongest make not the loudest noise."

Football 2, 3, 4; Baseball 2, 3, 4; Glee Club 1, 2.

RUSSELL ANDERSON "SWEDE"

"Those move easiest who have learned to dance."

Torch Club 1; Interclass Basketball 1, 2, 3.



ELEANOR BIDWELL "BIDDY"

"Who says the world is sad? Away with care!"

LEONARD BJORKMAN

"LEN"

"Thou little helpful maiden,
Come unto my great heart."

Football 1, 2, 3, 4; Hockey
2, 3, 4; Varsity Football 3,
4; Sock and Buskin 3, 4;
Torch Club 1; Band 1, 2, 3,
4; "Somanhis" Staff 3; Presi-
dent Junior Class; Chairman
of Prom Committee; Glee
Club 1; Interclass Baseball,
Football, Track, and Hockey;
Student Council 3; Cast of
"Captain Applejack" and
"Admirable Crichton" 3;
Business Manager of "Bab"
4; Hi-Y Club 3, 4.



DIXON BURDICK "DICK"

"My tongue is the pen of a
ready writer."

Torch Club 1; Neophyte
Sodality 1; Science Club 1;
Hi-Y 4; Interclass Basket-
ball 4; Honor Roll 3.



ELMER BORST

"LOUIE"

"This is the silliest stuff that
E'er heard."

ROY BURNHAM "CURLY"

"Work? When there is plea-
sure in the waiting?"

Torch Club 1.

NELLIE BRAZAUSKY

"NELL"

"He is well payed that is
well satisfied."

Girl Reserves, Glee Club 1;
Junior Red Cross 1; Fresh-
man Basketball.



SANDY BURNS

"Good manners belong not to
kings alone"

Track 1, 2, 3, 4; Honor
Roll 14; Honor Student.

EUNICE BROWN

"LEFTY"

"They look into the beauty
of thy mind
And that, in guess, they mea-
sure by thy deeds."

Debating Club 1; Glee Club
1; "Somanhis" Covers 3, 4;
Honor Roll 19; Honor Stu-
dent.



DORIS CAMPBELL "DOT"

"A still, small voice."

WILBUR BROWN

"BROWNIE"

"Your tale, sir, would cure
deafness."

Baseball 2, 3; Basketball
4; Junior Basketball; Sock
and Buskin 4; Football 3;
Hockey 3, 4.



JOHN CAREY "JOHNNY"

"Knowledge advances by
steps, not by leaps."

Torch Club 1; Freshman
Dramatics; Track 3, 4; Foot-
ball 4; Cross Country 4; As-
sistant Manager Track 3;
Honor Roll 1.

GERALD CHAPPELL

"JERRY"

"Some were born on this earth to till the soil."

Latin Club 1; Honor Roll 8.



EDNA CORDY

"Young women who blush I like better than those who look pale."

Leaders' Class 3, 4; Basketball 2, 3; Girl Reserves 4; Hockey Team 3; Student Council 1; Honor Roll 19; Honor Student.

ROGER CHENEY

"ROG"

"The world is but a stage—"

Football 1, 2, 3, 4; Track 1, 2, 3, 4; Hockey 3, 4; Hi-Y Club 3, 4; Sock and Buskin 2, 3, 4; Student Council 1, 2; Second Team Basketball 3; Freshman Basketball; Senior Class Party Committee; Latin Club 1; Cast of "Captain Applejack", "Bab", "Lucky Break."



NORMAN CROSSEN

"NORM"

"A man's accusations of himself are always believed,

His praises of self, never."
Torch Club 1.

EDNA CHRISTENSEN

"CHRISTIE"

"Is she not passing fair?"

Honor Roll 13; Home Room Basketball.



ELNA DAHLMAN

"EL"

"Bashful sincerity and comely love."

Glee Club 2; "Somanhis" typist; Honor Roll 7.

FREDA CLEGG

"A pleasing countenance is a silent commendation."

Debating Club 1; Argonaut Club 1; Latin Club 1; Neophyte Sodality 1; Junior Red Cross 1; Student Council 2; Class Secretary 2; "Somanhis" Staff 3; Junior Prom Committee 3; Sock and Buskin 4; Vice-President Sock and Buskin 4; Cast of "Bab"; Honor Roll 4.



HILMA DAHLMAN

"CHECKY"

"All who joy would win Must share it,—happiness was born a twin."

Girls' Basketball 1, 3, 4; Girls' Leaders Class 3, 4; Girls' Hockey 3; Honor Roll 14.

WILLIAM CLIFFORD

"LEFTY"

"When youth and pleasure meet

To chase the glowing hours with flying feet."

Torch Club 1; Glee Club.



HELEN DAVIS

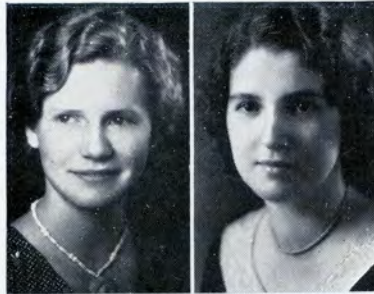
"Better to give than to take"

Girl Reserves 3, 4; Girls' Basketball 2, 3.

FLOREALE DESPLANQUE
"FLO"

*"To set the cause above re-
nown,
To love the game above the
prize."*

Honor Roll 20; Honor Stu-
dent.



VIVIAN DuPONT "VIV"

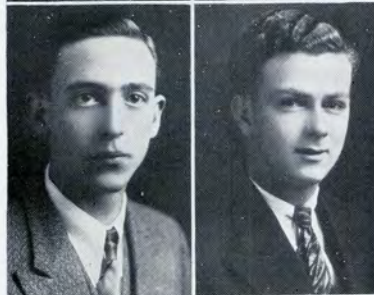
*"She was honest and bright
and the teacher's delight."*

Latin Club 1; Argonaut 1;
Honor Roll 16; Honor Stu-
dent.

PASQUALE DEYORIO
"PAT"

*"On wind and wave the boy
would toss,
Was great, nor knew how
great he was."*

Torch Club 1; Honor Roll
18; Honor Student.



JAMES EGAN "JIMMY"

*"Beneath this unassuming ex-
terior are concealed wit
and a world of jollity."*

Student Council 1.

CLARA DICKSON
"DICKIE"

*"Good to be merry, and
wise."*



EDWINA ELLIOTT "EDDY"

*"The fairest garden in her
looks
And in her mind the wisest
books."*

Glee Club 1, 2; Argonaut
Club 1; Junior Red Cross 1;
Neophyte Sodality 1; Class
Vice-President 1, 4; Assistant
Editor "Somanhis" 3; Editor
"Somanhis" 4; Latin Club 1;
French Club 4; Student Coun-
cil 1; Senior Class Party
Committee; Class Day Com-
mittee; Honor Roll 22; Val-
edictorian.

MARGARET DONAHUE
"PEG"

*"But still her tongue ran on,
the less of weight it bore
with greater ease."*

Junior Red Cross 1; Girl
Reserves 4.



HARRY ELLIOTT
"MINUTE-MAN"

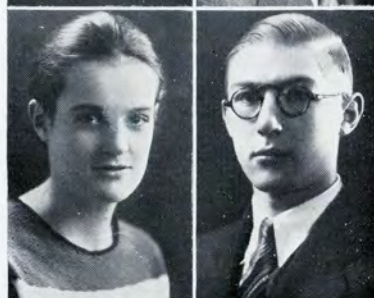
*"Silence is the mother of
truth."*

Torch Club 1.

FLORENCE DONOHUE
"FLORRIE"

*"A fool may talk, but a wise
woman speaks."*

Argonaut Club 1; Junior
Red Cross 1; Neophyte Soda-
lity 1; Latin Club 1; Girl
Reserves 2; Class Secretary
3; Junior Prom and Ring
Committees 3; Sock and Bus-
kin 4; Senior Class Party
Committee 4; "Somanhis"
Staff 4; Honor Roll 7.



LESLIE ERIKSON "LES"

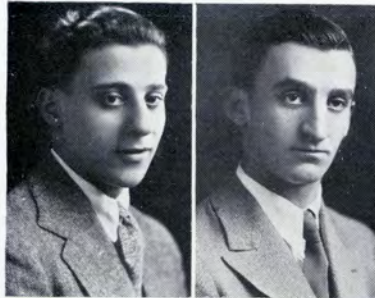
"Woman delights not me."

Torch Club 1; Debating
Club 1; Honor Roll 5.

JOSEPH FARR

*"For't is always fair weather
When good fellows get to-
gether."*

Torch Club 1; Hockey 2,
3, 4.



FRANK GAMBOLATI

"GYP"

*"Wit, now and then, struck
smartly, shows a spark."*

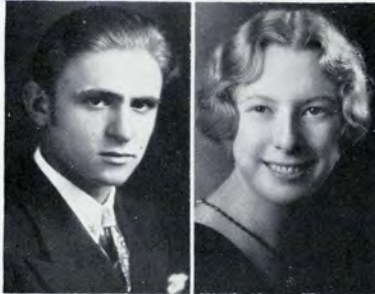
Torch Club 1; Assistant
Manager Basketball 3; Man-
ager Basketball 4; Honor
Roll 7.

MARIO FAVA

"FAVA"

"Man's life is but a jest."

Neophyte Sodality 1; Fresh-
man Science Club; Honor
Roll 6.



DOROTHY GESS

"DOT"

*"In her tongue is the law of
kindness."*

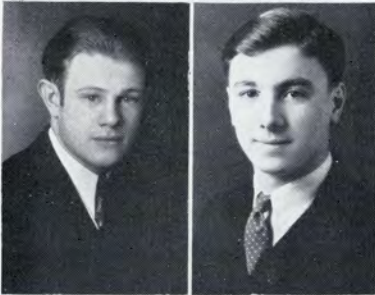
French Club 4; Glee Club
4; Girl Reserves 4; Honor
Roll 2; Junior Red Cross 1.

STUART FERGUSON

"FERGIE"

*"What hath night to do with
sleep?"*

Basketball 4; Hockey 4.



ECTOR GIOVANNINI

"JUMP"

*"He makes a friend who
never makes a foe."*

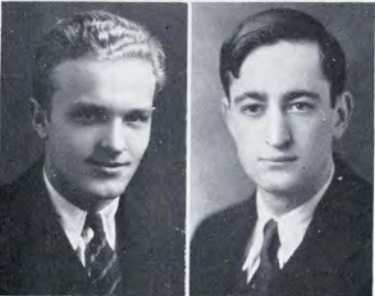
Honor Roll 4.

EDWARD FISCHER

"BUD"

*"'Tis not strength, but art,
obtains the prize."*

Track 2, 3, 4; Football 3,
4; Torch Club 1.



MAX GOODSTINE

"SULLY"

*"Young fellows will be young
fellows."*

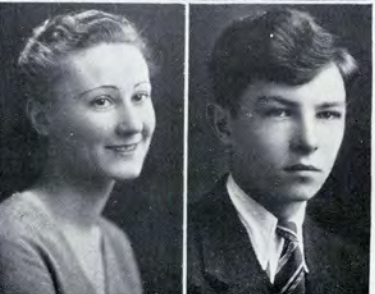
Debating 2; Honor Roll 2.

MARGARET FRENEY

"PEG"

*"Woman's at best a contra-
diction still."*

Argonaut Club 1; French
Club 2.



JOHN GORMAN

"GORDY"

*"For he was studious of his
ease."*

Torch Club 1; Honor Roll
2.

HARVEY GOULD
"SHORTY"

*"There is more than one way
to attain great height."*

Torch Club 1; Band 1, 2,
3, 4; Swimming 4; Pep Club
4; Honor Roll 1.



RUTH HALE "HALE"

*"Her stature's tall—
I hate a dumpy creature."*

Neophyte Sodality 1;
Junior Red Cross 1; Argon-
aut Club 1; Latin Club 1;
Sock and Bukin 3, 4; Cast
of "Bab" 4; "Somanhis"
Staff 4; Honor Roll 22;
Honor Student.

CHESTER GOVANG "CHET"

*"Oh, leave the gay and fes-
tive scenes,
The halls of dazzling light."*

Track Team 1, 2, 3; Torch
Club 1; Argonaut Club 1;
Freshman Baseball 1; Inter-
class Football 2; Interclass
Baseball 1.



DOROTHY HANSEN "DOT"

*"She is pretty to walk with,
And witty to talk with,
And pleasant, too, to think
on."*

Junior Red Cross 1; Girl
Reserves 4; Student Council
2; Honor Roll 19; Honor
Student.

MARY GREZEL

*"All nature wears one univer-
sal grin."*

Honor Roll 9.



ROMALDA HAPONIK

*"For she was just the quiet
kind*

Whose natures never vary."

Neophyte Sodality 1; Junior
Red Cross 1; Girl Reserves
4; Honor Roll 21; Honor
Student.

NAOMI GRIFFITH "NOMI"

*"Genteel in personage,
Conduct, and equipage."*

Honor Roll 8.



BERNICE HARRISON

"BERNIE"

*"Ability wins us the esteem
of true men."*

Argonaut Club 1; Glee
Club 1, 2; Girl Reserves 2,
3, 4; Treasurer Girl Reser-
ves 3; Neophyte Sodality 1;
Junior Red Cross 1; "Soman-
his" Staff 4; Latin Club 1;
French Club 4; Honor Roll
22; Honor Student.

FRANKLIN HADDEN "RED"

*"A little dynamite may make
a lot of noise."*

Torch Club 1; Band 2, 3;
Hi-Y 2, 3, 4; Prohecy and
Gifts Committee 4; Vice-
President of Hi-Y 4; Inter-
class Basketball 4.



HAROLD HART "PEANUT"

*"Quarrels would not last long
if the fault were only on
one side."*

Glee Club 1, 2; Neophyte
Sodality 1; Torch Club 1;
Honor Roll 2.

DOROTHEA HASTINGS
"DOT"

*"For blessings ever wait on
virtuous deeds,
And though a late, a sure re-
ward succeeds."*

Freshman Glee Club.



A. THOMASENA HOOKS
"ENA"

*"A short saying often carries
much wisdom"*

Junior Red Cross 1; Latin
Club 1; Neophyte Sodality
1; Honor Roll 12.

FLORENCE HERTER
"FLOSSIE"

*"Politeness is as natural to
delicate natures as perfume
is to flowers."*

Argonaut Club 1; Junior
Red Cross 1; Sock and Bus-
kin 4; Honor Roll 13.



HELEN HORAN "DINKY"

"And oh, but she was gay!"

Junior Red Cross 1; Girl
Reserves 2, 3; Sock and Bus-
kin 3, 4; Cast of "Bab" 4.

ERNA HESS "ERNIE"

*"Victory belongs to the most
persevering."*

Glee Club 4; "Somanhis"
Staff 4; Honor Roll 14;
Honor Student.



DOROTHY HULTMAN
"DOT"

*"Vain? Let it be so.
Nature was her creator—
Withal a lovely and unfetter-
ed creature."*

Sock and Buskin 3, 4;
"Somanhis" Staff 4; Junior
Red Cross 1; Neophyte Soda-
lity 1; Latin Club 1; Argon-
aut Club 1; French Club 4;
Honor Roll 22; Honor Stu-
dent.

LEONARD HICKING
"PIKER"

*"Youth comes but once in a
lifetime."*

Torch Club 1; Interclass
Swimming 1; Interclass Base-
ball 1; Swimming 2, 3, 4;
Track 2; Class Treasurer 2;
"Somanhis" Staff 4; Inter-
class Basketball 3.



ALICE HUNTER "AL"

*"All human race from China
to Peru
Pleasure, howe'er disguised by
art, pursue!"*

Girl Reserves 2, 3; Glee
Club 1.

WALTER HOLMAN "WALT"

*"Do that which is right, and
let come what may."*

Torch Club 1.



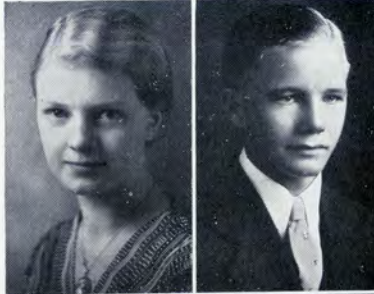
LILLIAN JANSON "LILL"

*"Life is a jest, and all things
show it;
I thought so once, but now
I know it."*

Junior Red Cross 1.

LOUISE JANSSEN "LOU"
*"Our youth we can have but today,
 We may always find time to grow old."*

Junior Red Cross 1; Neophyte Sodality 1; Glee Club 2; Sophomore Girls' Basketball; Girl Reserves 2, 3, 4; Vice-President Girl Reserves 3; President Girl Reserves 4; Sock and Buskin 4; Prophecy and Gifts Committee 4; Honor Roll 2.



HERBERT JOHNSON
 "YUMP"

*"To mourn a mischief that is past and gone
 Is the next way to draw new mischief on."*

Hi-Y Club 3, 4; Torch Club 1; Soccer 3, 4; Hockey 2, 3, 4; Science Club 1.

DOROTHY JENSEN "DOT"
"Flirtation, attention, without intention."

Glee Club 1; Honor Roll 4.



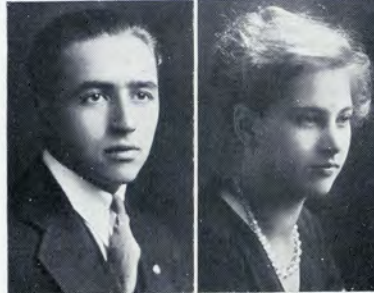
MILDRED JOHNSON
 "MILLY"

"Many small make a great."

Girl Reserves 4; Junior Red Cross 1; Glee Club 1; Honor Roll 15.

DONALD JOHNSON "DON"
*"A man who falls in love
 Will find plenty of occupation."*

Science Club 1; Honor Roll 11; Honor Student.



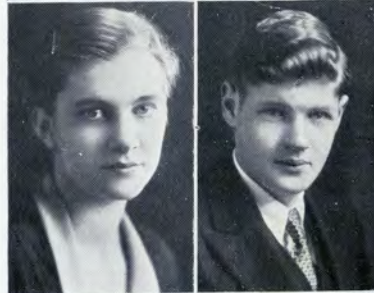
RUTH JOHNSON

*"Those graceful acts,
 Those thousand decencies
 that flow
 From all her words and actions."*

Girl Reserves 3, 4; Junior Red Cross 1; Honor Roll 3.

GLADYS JOHNSON
 "GLADDIE"
*"Stately and tall she moves
 through the hall,
 The chief of a thousand for
 grace."*

Argonaut Club 1; Neophyte Sodality 1; Glee Club 2; Junior Red Cross 1; Girl Reserves 2, 3, 4; French Club 4.



CHESTER JOYCE "CHET"

*"Happy, and from care I'm
 free why can't they all be
 contented like me?"*

GUNNAR JOHNSON
 "SWEDE"
*"A town that boasts inhabitants
 like me
 Can have no lack of good
 society."*

Sock and Buskin 3, 4; Band 3, 4; Orchestra 2, 3; Torch Club 1; Neophyte Club 1; Soccer 4; Interclass Basketball 4; Honor Roll 13; Honor Student.



MIRIAM KARLSEN

*"Fair flower that doth so
 comely grow."*

Glee Club 1; Junior Red Cross 1.

CHARLES KASELAUSKA
"JAZY"

*"Every man is a volume if
you know how to read
him."*

Torch Club 1; Science Club
1; Soccer 4; Track 4; Inter-
class Swimming 4; Interclass
Basketball 4; Honor Roll 3.



MINNIE KOCHIN
"MIN"

*"Within the midnight of her
hair
Half hidden in its deepest
depths."*

Junior Red Cross 1; Inter-
class Swimming 1; Girls'
Glee Club 2, 3, 4; Girl Re-
serves 4; Honor Roll 4.

LOUISE KEISH "LOU"
*"Cheerful company shortens
the miles."*

Girl Reserves 3, 4; Treas-
urer Girl Reserves 4.



GERTA KOHLER "GERT"
*"The unspoken word never
does harm."*

Glee Club; Honor Roll 11.

STILLMAN KEITH
"BABE"
*"'Tis love makes the world
go round."*

Orchestra 1, 2, 3; Soccer
3, 4.



SOPHIA KOLKOSKI "SO"
"A light heart lives long."

Sock and Buskin 4; Girl
Reserves 4; Glee Club 1;
Triangular Debating Club 1;
Honor Roll 5.

OTIS KERR "BUDDIE"
*"I have fought my fight, I
have lived my life,
I have drunk my share of
wine.
From Trier to Coln there was
never a knight
Led a merrier life than mine."*

Torch Club 1; Student
Council 2, 3; Manager Foot-
ball 3; Varsity Hockey 2;
Baseball 2, 3, 4; Captain Var-
sity Baseball 4; Basketball 2,
3, 4; Finals in State Tennis
Tournament.



PHYLLIS KRATCHMAR
"PHYL"
*"A bundle of mischief, an
ocean of smiles."*

Neophyte Sodality 1; Junior
Red Cross 1; Student Coun-
cil 1; Glee Club 2; Latin
Club 1; French Club 3, 4;
Girl Reserves 2, 3, 4; Secre-
tary Girl Reserves 4; "So-
manhis" Staff 4; Honor Roll
22; Honor Student.

WILFRED KLEINSCHMIDT
"WILLIE"
*"My tongue within my lips I
reign;
For he who talks much must
talk in vain."*



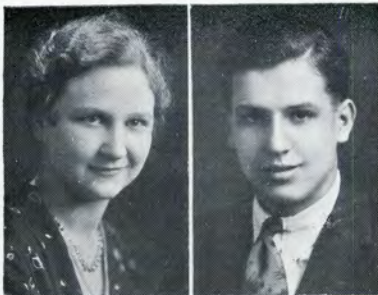
ADELHIEDE LAMPRECHT
"HEIDI"
*"Humble because of knowl-
edge;
Mighty by sacrifice."*

Glee Club 2, 3, 4; Fresh-
man Basketball; Honor Roll
10.

ANNA LAUFF

"No legacy is so rich as honesty."

Glee Club 2; "Somanhis"
Typist 4; Honor Roll 5.



EDWARD LITHWINSKI
"FLITCH"

"They who have light in themselves, will not revolve as satellites."

Captain Swimming Team 3, 4; Football Team 2, 3, 4; Track Team 1, 2, 3, 4; Torch Club 1; Glee Club 1; Sock and Buskin 4; Student Council 4; Cast of "Bab."



FOSTER LEAVITT "FOSS"

"The man of wisdom is the man of years."

Track 3, 4; Assistant Manager Track 3; Manager Track 4; Cross Country 4; Honor Roll 17; Honor Student.



JOHN LLOYD "JOHNNY"

"Importance is one thing and learning's another; But a debate's a debate, and that I assert."

Argonaut Club 1; Jokes Editor of Freshman "Somanhis" 1; Debating Club 2, 3, 4; Triangular Debating Team 2, 3, 4; Sock and Buskin 3, 4; Cast of "Admirable Crichton" 3; Band 1, 2, 3; French Club 4; Baseball Squad 4; Honor Roll 11.



ALBERT LENGEL "AU"

"She is the apple of my eye."

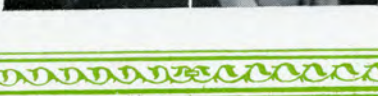
Track 2, 3, 4; Cross-Country 4; Captain Cross-Country 4; Torch Club 1; Interclass Track 1; Honor Roll 1.



DOROTHY LUDWIG "DOT"

"A merry heart make'h a cheerful countenance."

French Club 4; Girl Reserves 4; Junior Red Cross.



JOHN LERCH "POP"

"To seek knowledge is a virtue."

Torch Club 1; Freshman Basketball; Basketball 2; Varsity Basketball 3, 4; Captain Basketball 4; Honor Roll 1.



ROBERT LYONS "BOB"

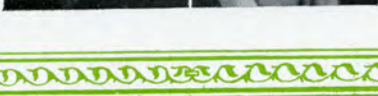
"Music is the universal language of mankind."

Orchestra 3, 4; Band 1, 2, 3, 4.

WILFRED LISK "ED"

"Man's eyes deceive him not."

Torch Club 1; Neophyte Sodality 1; Honor Roll 2.



DOROTHY LYTTLE "DOT"

"A daughter of the gods, divinely tall, and most divinely fair."

Latin Club 1; Neophyte Sodality 1; Junior Red Cross 1; Girls' Basketball 1, 2, 3, 4; Glee Club 2; Girl Reserves 2, 3; Leaders' Class 3, 4; Girls' Hockey Team 3; Girls' Varsity Basketball Team 4; Honor Roll 17.

SHIRLEY MacLACHLAN

"Little said is soonest mended."

Glee Club 2, 3, 4.



GEORGE MARLOWE

"PORK"
"Nothing great was ever achieved without enthusiasm."

President Argonaut Club 1; Freshman Editor "Somanhis"; "Somanhis" Staff 2, 3, 4; Business Manager 3, 4; Debating Club 2, 3, 4; Triangular Debating Team 3, 4; Vice-President Debating Club 4; French Club 4; Junior Prom Committee 3; Orchestra 1, 2, 3; Hi-Y Club 3, 4; Secretary-Treasurer 4; Honor Roll 22; Honor Student.

ALBERT MADDEN "AL"

"Serious and well behaved; never any trouble gave."

Torch Club 1; Science Club 1; Interclass Basketball 1; Track Squad 2; Sophomore Track Team; Interclass Basketball 3; Sock and Buskin 4; Stage Manager for "Bab"; Honor Roll 7.



PEARL MARTIN "SKIP"

"Quiet, steadfast, and demure."

Girl Reserves 4; French Club 4; Junior Red Cross 1; Honor Roll 17; Honor Student.

WARREN MARKHAM

"A lion among ladies is a most dreadful thing; For there is not a more fearful wild-fowl than your lion living."

Sock and Buskin 4; Torch Club 1; Rifle Club 1.



THEODORA MAXWELL

"TED"

"For gowns, and gloves, and caps, and tippets Are beauty's sauces, spices, and sippets."

Committee Freshman Party; "Somanhis" agent.

MARGARET MARKLEY

"PEGGY"

"Her reasoning is full of tricks."

Junior Red Cross 1; Girls' Basketball Team 2, 3; Honor Roll 1.



JOHN McBRIDE "SCOTTIE"

"Strong in will to strive, to seek, to find."

Track 1; Hockey 1.

EDITH MARKS "EDIE"

"In action faithful, and in honor clear."

Orchestra 1, 2, 3, 4; Glee Club 1; Interclass Basketball 1, 2, 3, 4; "Somanhis" typist 4; Junior Red Cross 1; Honor Roll 1.



AGNES McDERMOTT

"AGGIE"

"Little I ask; my wants are few."

Junior Red Cross 1; Glee Club 2; Girl Reserves 4.

HERBERT MCKINNEY
"HERB"

*"The cheerful man should
rule this world."*

Torch Club 1; President
Boys' Glee Club 1; Football
1, 2, 3, 4; Basketball 2; Base-
ball Manager 4; Hi-Y 3, 4;
Band 1, 2, 3; Orchestra 1,
2; Glee Club 1, 2, 3, 4; Cast
"Mikado", "Pirates of Pen-
zance."



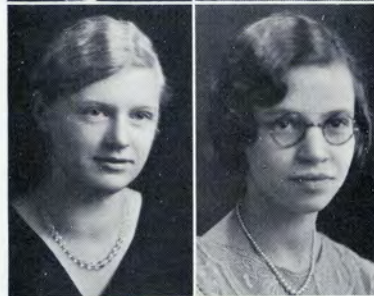
DOROTHEA NEVERS "DOT"

*"Ambition is the germ from
which all nobleness pro-
ceeds."*

ANNA MORDAVSKY
"ANN"

*"What trusty treasure in the
world can countervail a
friend?"*

Girl Reserves 4; Freshman
Basketball 1, 2; Honor Roll 1.



ELSIE NEVERS

*"Thy modesty's a candle to
thy merit."*

DELLA MOZZER "DEL"

*"Patience is the key of con-
tent."*

Junior Red Cross 1; Girl
Reserves 4; Honor Roll 10.



DANIEL NEWCOMB "DAN"

*"No man's good deeds did
they commend;
So never rais'd themselves a
friend."*

Torch Club 1; "Somanhis"
Staff 4; Honor Roll 9.

MARJORIE MULDOON
"MARGE"

*"Bright as the stars, her eyes
the gazer strike
And like the sun, they shine
on all alike."*

Latin Club 1; Junior Red
Cross 1; Argonaut Club 1;
Neophyte Sodality 1; Secre-
tary Freshman Class 1; Stu-
dent Council 1; Glee Club 2;
Girl Reserves 3; Class Social
Committee 2, 3; French Club
4; Honor Roll 22; Honor
Student.



CHARLOTTE NEWTON
"NEWT"

*"Slumber is more sweet than
toil."*

Junior Red Cross 1; Girl
Reserves 2, 3.

DAVID NELSON "DAVE"

*"Never elated when one man's
oppress'd,
Never dejected while anoth-
er's blessed."*

Torch Club 1; Assistant
Manager Basketball 3; Class
Day Committee; Honor Roll 8.



INGA NIELSEN

*"It is not enough to do
good;
One must do it the right
way."*

Glee Club 1; Junior Red
Cross 1; President Freshman
Glee Club; Honor Roll 8.

JAMES O'LEARY "JIMMIE"
*"Whate'er he does, he excels
 all men."*

Football 2, 3, 4; Captain
 Football 4; Basketball 2, 3,
 4; Baseball 1, 2, 3, 4; Track
 1, 2, 3, 4; Harvard Book
 Prize 3; Student Council 1,
 2, 3, 4; President Student
 Council 4; French Club 4;
 Argonaut Club 1; Class Presi-
 dent 1, 4; "Somanhis" Staff
 4; Olin Scholarship Winner
 4; Honor Roll 22; Honor
 Student.



JEANNETTE PETICOLAS
 "PET"

"Be merry if you are wise."

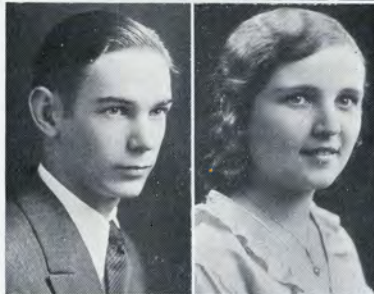
Glee Club 1; French Club
 4; Hockey Team 1, 2; Girl
 Reserves 4; Sock and Buskin
 4; Latin Club 1; Class Social
 Committee 3; Honor Roll 10.



ARTHUR OLSON "ART"

*"He that climbs the tall
 tree has won right to the
 fruit;
 He that leaps the wide gulf
 should prevail on his suit."*

Torch Club 1; Track 3, 4;
 Assistant-Business Manager 4;
 Honor Roll 1.



ALICE PETRONIS

*"A little work, a little play,
 To keep us going the live-
 long day."*

Glee Club 1; Honor Roll 2.



ARTHUR PALMER "ART"

*"Of every noble work the si-
 lent part is best."*

Hi-Y 1; Track 3; Hockey 3.



RAYMOND PRATT

"AMBROSE"

*"For the love of laughter,
 hinder not the humor of
 his design."*

Football 3, 4; Hi-Y Club.



CATHERINE PATTEN

"PAT"

*"She was more loyal than
 friends could say."*

Junior Red Cross 1; Honor
 Roll 1.



ELEANOR PRENTICE "EL"

*"The great end of life is not
 knowledge, but action."*

Junior Red Cross 1; Glee
 Club 1, 4; Basketball 4; Cap-
 tain Basketball Team 4; Art
 Editor "Somanhis" 4.



BEATRICE PERRETT

"BEA"

*"Haste thee nymph and bring
 with thee
 Jest and youthful jollity."*

President Junior Red Cross
 1; Glee Club 2; Orchestra 2,
 3; Sock and Buskin 3, 4;
 Cast of "Bab" 4; Pep Club
 4; Class Social Committee 2,
 3, 4; Class Day Committee
 4; Honor Roll 2.



JULIUS RADDING "BEN"

*"There is no substitute for
 thorough-going, ardent, and
 sincere earnestness."*

Football 2, 4; Sock and
 Buskin 4; Glee Club 1, 2, 3,
 4.



IDA RIECHENBACK "I"
*"Happy am I, from care I'm
 free."*

Glee Club 1, 3; Junior Red
 Cross 1; Class Team Basket-
 ball 4; Captain Varsity Basket-
 ball Team 4; Honor Roll
 15.



MARY ROBINSON "MAY"
*"Hang sorrow! Care will kill
 a cat,
 And therefore let's be merry."*

EMILY REMIG "EM"
*"Whatever is worth doing at
 all is worth doing well."*



HARRY RUDEEN "JAZZ"
*"What shall I say to you?
 What can I say
 Better than silence is?"*

Torch Club 1; Football 3,
 4.

AUDREY RENN "ANDY"
*"Had I a heart for false-
 hood framed,
 I ne'er could injure you."*



RUTH RUDEEN "RUTHY"
*"Good nature, like a bee, col-
 lects honey from every
 herb."*

Honor Roll 1.

GEORGE RICH "RASH"
*"'Tis said that 'Giants' once
 held all the power."*

Honor Roll 20; Honor Stu-
 dent.



ANNA SAKALOUSKI "SAK"
*"An ounce of mirth is worth
 a pound of sorrow."*

Glee Club 1, 2, 3, 4; Girls'
 Varsity Basketball 4; Honor
 Roll 2.

MARGARET ROBINSON
 "PEG"
*"Brains well prepared are the
 monuments where human
 knowledge is most surely
 engraved."*

Glee Club 1, 3, 4; Girl Re-
 serves 4; Honor Roll 11.



HELEN SEGEVICK
*"All musical people seem to
 be happy."*

Glee Club 1, 2, 3, 4; Or-
 chestra 1, 2, 3, 4.

PAUL SHERIDAN "RED"

*"One who never turned his back.
But marched face forward."*

Torch Club 1; Football 2, 3, 4; Glee Club; Cast of "Pirates of Penzance."



ALBERT SMITH "AL"

*"Who pants for glory finds but short repose;
A breath revives him or a breath o'erthrows."*

Basketball 2, 3, 4; Baseball 1, 2, 3; Track 1, 2, 3, 4; Torch Club 1; Interclass football.

ANNA SIBRINZ "ANN"

"The only way to have a friend is to be one."

Basketball 2, 4; Glee Club 1; Honor Roll 11.



EARL SMITH "THUG"

*"Great wits and valors, like great states
Do sometimes sink with their own weights."*

Torch Club 1; Hockey Team 3, 4; Track Team 2, 3; Manager Soccer 4; Honor Roll 12.

JOHN SIBRINZ "BEANS"

"Silence is the perfectest herald of joy."

Honor Roll 2.



MILDRED SMITH "SMITTY"

*"Behold she is happy, there is gladness in her eyes;
And her heart is a sealed fountain."*

Junior Red Cross 1; Honor Roll 10.

RUTH SIGGINS "RUTHIE"

"Speech is great, but silence is greater."

Glee Club 2; Basketball 2.



CLARENCE SMYTH "ROCK"

*"For he will never follow anything
That other men begin."*

Neophyte Sodality 1; Track 1, 3, 4.

BELLA SILVERSTEIN

"BELLE"

*"The rule of my life is to make business a pleasure,
and pleasure my business."*

Leaders' Class 3, 4; Basketball 1, 2, 3, 4; Glee Club 1, 2, 3, 4; Honor Roll 6.



MARY SOMMERVILLE

*"Charming, fragile, dainty, sweet;
A maid beguiling and petite."*

Class Vice-President 2; Photograph Committee 4; Graduation Decoration Committee 4; Prom Committee 3.

RUTH SONNIKSEN
"SONNY"

"Her style shows the woman."

Junior Red Cross 1; Latin Club 1; Neophyte Sodality 1; Sock and Buskin 4; French Club 4; "Somanh's" Staff 4; Senior Class Party Committee; Honor Roll 22; Salutatorian.



ROBERT THAYER "GIT"

*"Love! Love! Love!
Love is like a dizziness."*

DOMINIC SQUATRITO
"SQUAT"

*"Forward and frolic glee was there,
The will to do, the soul to dare."*

Football 1, 2, 3, 4; Baseball 1, 2, 3, 4; Basketball 2, 3, 4; Track 1, 2, 3, 4; Captain Football 3; Torch Club 1; Treasurer of Class 4.



SIGNE THORNFELDT
"SIG"

*"A merry heart doeth good
like a medicine."*

Honor Roll 3.

RUTH STAVNITSKY
"STAVIE"

"Feminine vanity; that divine gift which makes woman charming."

Decoration Graduation Committee 4; "Somanhis" Typist 4; Prom Committee 3; Honor Roll 1.



ETHEL TIDMAS
"TIDBITS"

*"A blush is beautiful, but
often inconvenient."*

Glee Club 1, 2, 3; Girl Reserves; Honor Roll 2.

ESTHER TACK "ES"

*"Let me have music dying,
and I seek no more delight."*

Boys' and Girls' Glee Club Accompanist 2, 3; Orchestra 2, 3, 4; Girls' Basketball 3; Honor Roll 13.



ANNE TIVNAN

*"If music be the food of
love—play on!"*

Glee Club 2, 3; Orchestra 2, 3; Girl Reserves 4; Senior Basketball; French Club 4; Honor Roll 2.

CHARLES TEDFORD
"TEDDY"

*"'Twas good advice, and
meant, my son,
Be good."*

Honor Roll 15.



HELEN TOPPING "TOP"

*"And mistress of herself
though china fall."*

Glee Club 1; Girl Reserves 2, 3; Basketball 2, 3.

DORIS TURKINGTON
"DOT"

"My heart is true as steel."

Argonaut Club 1; Glee Club
1, 2, 3; French Club 2;
Honor Roll 3.



EVELYN WEST "EV"

*"There is a woman at the be-
ginning of all great
things."*

Decoration Committee 4;
Prom Committee 3; Photo-
graph Committee 3; Honor
Roll 3.

WILLIAM TURKINGTON
"BILL"

*"Bluffing is an art which
few accomplish."*

Torch Club 1; Argonaut
Club 1; Student Council 1,
3; Varsity Basketball 4;
Varsity Tennis 3; Honor Roll
7.



RUTH WICKHAM "MIKE"

*"Her ways are ways of plea-
santness, and all her paths
are peace."*

Glee Club 1, 2, 4; Orches-
tra 1, 2; Cast of "Pirates of
Penzance" 4; Honor Roll 20;
Honor Student.

ANTHONY URBANETTI
"TONY"

*"Quality, not quantity, is my
measure."*

Track 1; Tennis 2, 3;
Torch Club 1; Student Coun-
cil 4; Band 1, 2; Orchestra
1, 2, 3; Ensemble 1, 2, 3;
Honor Roll 14.



ETHEL WILEY

*"Like a sunny day in May,
She is fa'r, peaceful and
gay."*

STUART VENNART "RED"
*"There's nothing half so
sweet in life
As love's young dream."*

Torch Club 1; Science Club
1; Track 2, 3; Basketball 2,
3; Varsity Basketball 4;
Football 4.



ANNA WILKIE "ANN"

*"Few things are impossible to
diligence and skill."*

Argonaut Club 1; Glee Club
3; Girl Reserves 4; Latin
Club 1; Basketball 1, 2, 3,
4; Honor Roll 22; Honor
Student.

JANE WADACH
*"Full vessels give the least
sound."*

Class Quotation Committee;
Honor Roll 17.



FRED WIPPERT "FRITZ"

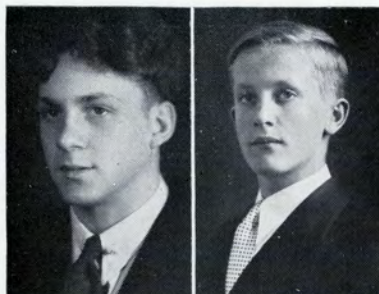
*"Reserved, not haughty; calm,
not sad; a thoughtful,
worthy, quiet lad."*

Student Council 2; Torch
Club 1; Honor Roll 4.

FRANZ WITTMAN "WITT"

*"I would it were bedtime, and
all were well."*

Track 1, 2, 3, 4; Captain
of Track 4; Soccer 3.



ADOLPH WRUBEL

"WHITEY"

*"Men's men: gentle or sim-
ple, they're much of a
muchness."*

Torch Club 1; Honor Roll
1.

STUART WOLCOTT

"WOOLIE"

*"Tis no woman catches my
eye."*

Honor Roll 1.



JOHN ZAPADKA

*"If you are in doubt, act as
if you knew."*

Track 2, 3; Football 3, 4;
Cross Country 4; Sock and
Buskin 3, 4.

CLARISSA WOOD

"CRICKIE"

*"As sweet and musical
As bright Appollo's lute."*

Neophyte Sodality 1; Glee
Club 1, 2, 3, 4; Girl Reserves
4; Cast of "Mikado" 3; Cast
of "Pirates of Penzance" 4;
Glee Club Secretary 3; Glee
Club President 4; Honor
Roll 4.



JOSEPHINE ZOKITES

"JOE"

*"Here is everything advan-
tageous to life."*

Glee Club 3, 4; Honor Roll
14.

"SQUAT"

Only say—"He played the game."
Caring not for praise or fame—
On many fields, in many schools
Respected for his sportsman's rules.

Shed no tears upon your way—
You know he wouldn't like that way.
But when you speak his honored name,
Only say—"He played the game."

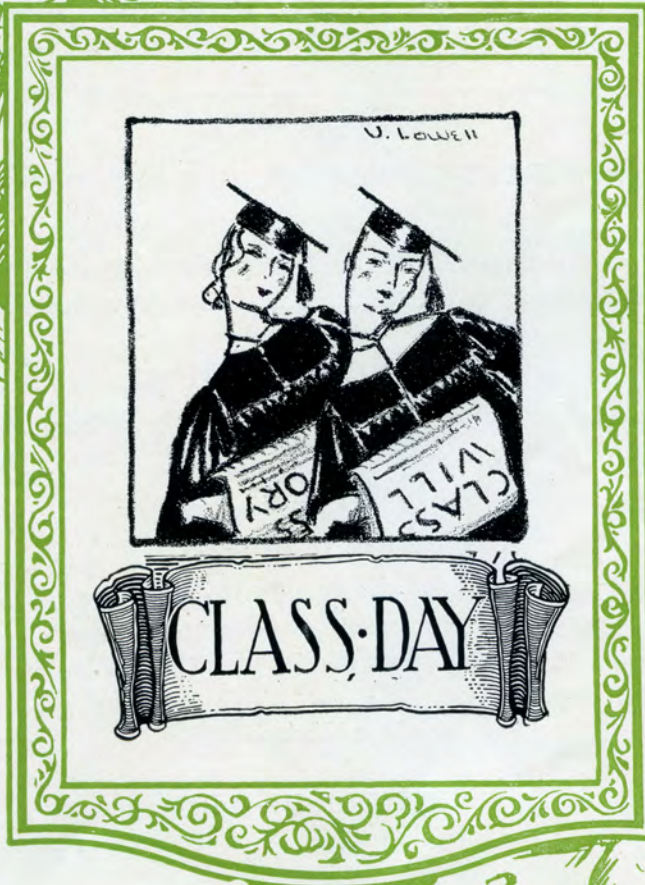
Anne Tivnan, '32

Who's Who In 1932

Best Actor	Roger Cheney	Best Natured Girl	Beatrice Perrett
Best Actress	Freda Clegg	Most Business Ability, Boy	Albert Madden
Best Athlete, Boy	Dominic Squatrito	Most Business Ability, Girl	Bernice Harrison
Best Athlete, Girl	Ida Reichenbach	Most Studious Boy	James O'Leary
Class Baby	Gerald Chappell	Most Studious Girl	Edwina Elliott
Cutest Boy	Gunnar Johnson	Vainest Boy	Leonard Bjorkman
Cutest Girl	Freda Clegg	Vainest Girl	Dorothy Hultman
Class Couples		Best Mannered Boy	Wilfred Lisk
Beatrice Perrett and Stillman Keith		Best Mannered Girl	Barbara Badmington
Inga Nielson and Leonard Bjorkman		Most Sincere Boy	Sandy Burns
Best Dancer, Boy	Warren Markham	Most Sincere Girl	Marjorie Muldoon
Best Dancer, Girl	Esther Tack	Wittiest Boy	Raymond Pratt
Best Debater	George Marlow	Wittiest Girl	Anne Tivnan
Done Most for the School, Boy	James O'Leary	Most Popular Boy	James O'Leary
Done Most for the School, Girl	Edwina Elliott	Most Popular Girl	Beatrice Perrett
Best Arguer, Boy	George Marlow	Greatest Quantity of Line	Roger Cheney
Best Arguer, Girl	Florence Donohue	Most Successful Line	Anne Tivnan
Most Drag, Boy	Gunnar Johnson	Class Snob	Ruth Hale
Most Drag, Girl	Barbara Badmington	Most Original Boy	Raymond Pratt
Best-Dressed Boy	Leonard Bjorkman	Most Original Girl	Anne Tivnan
Best-Dressed Girl	Dorothy Hultman	Most Artistic Boy	Raymond Pratt
Best-Looking Boy	Edward Fischer	Most Artistic Girl	Eunice Brown
Best-Looking Girl	Miriam Karlsen	Most Personality, Boy	Foster Leavitt
Most Musical Boy	Robert Lyons	Most Personality, Girl	Barbara Badmington
Most Musical Girl	Anne Tivnin	Class Shiek	Chester Govang
Best Natured Boy	Herbert McKinney		



THE CLASS OF 1932



*"In these sweet June days,
The teacher and scholar trust
Their parting feet to separate ways."*



Graduation Program

Presented by the Honor Students of the Class of 1932

Music { High School Orchestra
High School Glee Clubs
Salutatory Ruth Sonniksen

PAGEANT OF WORTHWHILE LEISURE

Characters:

George Washington James O'Leary
Spirit of the Future Barbara Badmington

EPISODE I—LITERATURE

Ruth Hale
Dorothy Hultman
Anna Wilkie
George Rich
Sandy Burns

EPISODE II—DRAMA

Edna Cordy
Bernice Harrison
Romalda Haponik
Vivian Dupont
Gunnar Johnson
John Lloyd
Charles Tedford
Anthony Urbanetti
Jane Wadach

EPISODE III—ART

Pearl Martin
Eunice Brown

EPISODE IV—MUSIC

Dorothy Hansen
Phyllis Kratchmar

EPISODE V—CURRENT EVENTS

Erna Hess
Marjorie Muldoon
George Marlow
Donald Johnson

EPISODE VI—NATURE

Floreal Desplanque
Valedictory
Pasquale Deyorio
Foster Leavitt
Edwina Elliott

AFTERNOON PROGRAM

Address of WelcomeJames O'Leary

Class History—

Beatrice Perrett
Hilma Dahlman

David Nelson
Leonard Bjorkman

Class Will—

Ida Anderson
Edward Fischer

Irma Anderson

Class OrationJohn Lloyd

EVENING PROGRAM

Class Prophecy and Presentation of Gifts

Irma Anderson
Florence Donohue
Louise Janssen

Anne Tivnan
Dixon Burdick
Franklin Hadden

Raymond Pratt

* * * * *

COMMENCEMENT

We are a new tree in the Forest of Life,
Stretching up its tip to the benevolent blue.
A new seedling, just budding forth
With the first foliage of maturity.
How will it grow, this seed planted with such
Loving care and watchfulness?
Will it weather the storms of bitter winters,
The parching rays of summer suns?
Will its branches be straight out to the ends,
With never a bending or knot?
Ah, let it grow up—up and on,
Till it pierces the clouds above.
Let it be sturdy and strong,
Its branches swaying in the wind,
But never snapping off short.
Let its trunk be wide and stable;
Let its shade be cool and restful;
And let the sun, shining through its branches,
Make pretty patterns on the grass.
We are a new tree in the Forest of Life,
A new seedling, just budding forth
With the first foliage of maturity.

Anne J. Tivnan, '32

SPECTEMUR AGENDO.

(History of the Class of 1932, M. H. S.)

Scene: COURT OF CIVILIZATION, EDUCATION Enthroned as Queen.

Enter A Page: I am a page in the Court of Civilization and I seek in the name of Education, its ruler, one upon whom to bestow the Banner of Merit, in recognition of worthy service rendered in the interest of Mankind. Each day there come from the far corners of the Earth, groups both small and large, claiming her recognition, protesting that they are agencies of present of future world betterment. Many indeed are the worthy projects Queen Education has reviewed; many the praises she has bestowed upon their sponsors—doctors, lawyers, men of letters, men of science, inventors, scholars—but no one yet has she found to whom she can say, "Well done. Within your efforts lies the answer to all problems; upon your shoulders rests the welfare of the World."

But lo! Who are these approaching, with scholarly mien and eyes alight with the glow of deeds accomplished and dreams to be fulfilled? Your pleasure, Sir?

Enter Two Travelers. The First Traveler Speaks: We are come from a great way off—from the halls of Manchester High School—journeying both day and night since we set out upon our pilgrimage, four long years ago. We come to make our offering to *CIVILIZATION* through its fair queen, *EDUCATION*, and we beg that it be accepted, humble though she may deem it, as a token of our earnest desire to further the cause of *MAN-KIND*. My Queen, our respects. (*Turning to the Queen, all bow.*)

Queen Education: "Spectemur agendo—By our deeds shall we be seen." What have you to offer as your contribution to the progress of Humanity, to the welfare of the World?

First Traveler: Oh, Queen. From our earliest days within the halls of M. H. S., we have been guided by the ideal that the good citizen is one who not only has a knowledge concerning many things but who uses his learning to the end that his life is fuller, richer, happier because of it and that society is improved by his having had a place in its organization. Knowing the benefits to be derived from good leadership, we selected first, from our midst, a quiet, gentle lad, unobtrusive, unknown as yet, but who to our eyes, presented the embodiment of leadership; a strong body, a keen mind, an attitude of cooperation, a sense of duty, a vision of the full life. James O'Leary started us on our pilgrimage to your shrine, Oh Education, and he presents our final offering to you, still counselling us, still inspiring us, still adding the fruits of his skill and his wisdom to the undertakings of his band. Not only in the start and in the ending have we been wise in our choice of chieftian—through years of weathering the storms of adjustment and new responsibilities, our course has been kept straight and safe under the guidance of Sylvester McCann and Leonard Bjorkman, worthy men, both, as in our records may be seen. And yet, Fair Queen, this worthy band would not have you think that their tasks of

leadership has been executed entirely through their own efforts—throughout the pages of History since time immemorial, they did teach us in M. H. S. and we did find for ourselves, behind governments, behind inventions, behind all deeds of valor and acts of worth, is to be found the gentle influence of woman. We recall with gratitude and appreciation the assistance of Edwina Elliott, twice chosen chieftian-aid, Mary Somerville, Barbara Badmington.

Within the volumes of our faithful scribes, may be found tales of awards received, all in the name of Education, all for the cause of Civilization: to John Lloyd, the "American Boy" prize; to George Marlow and John Lloyd debating medals; to Barbara Badmington, a National Scholastic award for literary merit; to James O'Leary, the Harvard Book prize and the Olin Scholarship; to members of the commercial department, countless medals for skill and achievement.

Second Traveler: But you must not think that we have grown haggard and bent from constant toiling with the elusive equation and subjunctive mode, Oh Queen, whose approval we seek. As you search the annals of our growth, you will find recorded there, a development of poise and grace, of ability to meet people and to make ourselves agreeable to those with whom we come in social contact. You will smile as you see pictured our assembly hall, lined on one side with sweet, awkward boy-children, on the other side with darling, hopeful girls, each wishing to dance on the floor between but each helpless before the gigantic courage needed to suggest it. You will find, as you continue reading there, an increased sense of social obligation as we "Tip-Toe Through the Tulips" at our Sophomore party to the "Trysting Place" at our junior social, seeing all the while how our standards of enjoyment are elevating, making us realize the joy of companionship with friends whose interests and ideals are keeping pace with our own. But not even the senior class party could compare with the JUNIOR PROM in the sense of joy and wholesome pride we felt as we watched President Bjorkman and Inga Nielson lead the march of perfectly groomed, perfectly poised, perfectly happy youths and maidens to their first "formal" dance. The cheap dance hall and the common cabaret hold no attraction for us, for we have learned the pleasure attainable in worthier entertainment.

Queen Education: Do I hear no mention of music? Have you no achievement in that field to offer? No life that does not realize the universal appeal of music can be said to satisfy my terms.

First Traveler: Fair Queen, many indeed are those among us whose lives are made richer through discovery of musical talent, awaiting expression. Who of the participants in our productions—audience or actor—did not sense the joy of harmony as they shared together the delightful music of "The Mikado", "Pirates of Penzance", "Finlandia"? We have not been selfish with our musical talents for we have been most willing and happy to coordinate our efforts with community projects, helping many times to execute programs of community planning,

Dramatics, too, have given us an outlet for self-expression, have afforded us standards of discrimination between the cheap vaudeville and the

wholesome play have helped us to cultivate a means of worthy use of leisure time.

Second Traveler: We have been realizing, Fair Queen, how important is the use to which we put our leisure time as economic and social change add to the amount of free time at our disposal. With this thought in mind, have we wisely studied our interests and become identified with organizations which hold out as inducements, "Fun, Recreation, Companionship". Many of us have felt our interests widen and deepen through participation in the activities of the Hi-Y, the Girl Reserves, the French Club and others of which you read in the records of "Somanhis", the mouthpiece of our school.

We have been striving to offer to Civilization, not only mental but physical prowess as well, feeling that a sound body is the birthplace of a sound mind and so, much of our activity has been centered upon physical development—but without our realizing it, many times, along with physical development, came, through athletics, the knowledge of how to work with others, how to subordinate one's personal desires for the good of the group, how to be a good leader and a good follower. Many of our group have made immortal places for their school on the records of its achievements—O'Leary, who holds the high jump and broad jump record in Track; Franz Wittman who, in his junior year, won the individual honors trophy at the Interscholastic meet; Squatrito, who was selected the best high school football player in Connecticut, and who played the game nobly, whether it was football in a thunderstorm or basketball at the Yale tournament or track events at home or abroad.

We laugh and are merry today, Fair Queen, for we have reached the goal—but we are ever mindful of our classmates who were called, one each year of our pilgrimage, to serve in the Master's Court—Alice Fredericks, Frederick Scranton, Lois Wilcox, Dominic Squatrito. They are gone but their spirits are with us, for in each of our activities, we find something of worth they have contributed, something of merit they have given to make our final presentation pleasing to you.

Thus, Fair Queen, we stand before you, offering to Civilization the results of our four years' efforts, hoping that you may find within them elements of the qualities needed to further the betterment of Mankind.

Queen Education: For many a month, long lines of pilgrims have appeared before me, offering their life work, seeking the Banner of Merit, but from all have I withheld it, confident ever, that, before me one day, should stand a greater than all that had come before—the Hope of Mankind. And here you stand, your life before you, your journey well begun, your minds and your hearts unswerving as your eyes catch the gleam of Service. Follow it to the ends of the Earth, carry on as you have begun and, in the life of Service, you will find happiness and benediction.

Queen Education awards the Banner of Merit upon which is emblazoned "Spectemur Agendo." The travelers lift it high and proudly bear it on with them.



*"A millstone and the human heart are driven ever
round,
If they have nothing else to grind, they must
themselves be ground."*

HIGH 1932 LIGHTS



Toman

"O wondersmith, O worker in sublime."



SOMANHIS STAFF

Sitting: Donohue, Toman, Elliott, Badmington, Hultman, Miss Walsh, Faculty Advisor.
 Second Row: Hale, Sonniksen, Harrison, Kratchmar, Prentice, Hess, Mohr, Quimby.
 Third Row: Hicking, Newcomb, Olson, Rubinow, Mr. Higgins, Business Manager; O'Leary, Marlow.

SOMANHIS

"Somanhis" won first prize in the Columbia National Contest of School Publications for schools of 800-1500 pupils.

STAFF
 EDITORIAL

Editor-in-Chief—Edwina Elliott, '32

Assistant Editors—Barbara Badmington, '32; James Toman, '33

Literary Editor—Ruth Hale, '32	Athletics (Boys)—James O'Leary, '32
School Notes—Dorothy Hultman, '32	Athletics (Girls)—Florence Donohue, '32
Alumni—Phyllis Kratchmar, '32	Art—Eleanor Prentice, '32
Exchange—Erna Hess, '32	Jokes—Ruth Sonniksen, '32

BUSINESS

Business Manager—George Marlow, '32

Ass't. Business Managers—Merrill Rubinow, '33; Arthur Olson, '32; Leonard Hicking, '32

Circulation Managers—Daniel Newcomb, '32; Bernice Harrison, '32; Doris Mohr, '33;

Betty Quimby, '33

TYPISTS

Elna Dahlman	Anna Lauff	Ruth Stavitsky
Romalda Haponik	Edith Marks	Anna Wilkie

"The Manchester Herald," High School Reporter, Betty Quimby, '33

Faculty Adviser—Miss Avis C. Walsh

Faculty Business Adviser—Mr. James L. Higgins

Faculty Art Adviser—Miss Harriet D. Condon

"Brief and glorious the debate."



DEBATING

Standing: Mr. Jenkins, Coach; Joslin, Rubinow, Toman.
Seated: Lloyd, Quimby, Marlow.

DEBATING

In spite of hard work and the efficient guidance of Coach Arland Jenkins, the debating team this year was not blessed with as successful season as it has been in the past.

This year, contrary to other years, the debating team engaged in only the Triangular Debate. It was held March 14, 1932. The question was: "Resolved: That the several states should enact legislation providing for compulsory unemployment insurance."

The Manchester Affirmative team consisting of Betty Quimby, James Toman, and Merrill Rubinow, lost a 3-0 decision to the Meriden Negative, while the Manchester Negative, consisting of George Marlow, John Lloyd, and Stuart Joslin, lost to the Middletown Affirmative by a similar margin.

Due to these defeats, Manchester was not able to gain permanent possession of the H. Wales Lines Trophy, upon which it had already gained two legs in the past two years.

"A merrier hour was never spent withal."



SOCK AND BUSKIN

- Seated: Lithwinski, Sutherland, Pola, Wirtalla, Andrews, Johnson, President; Clegg, Joslin, Miss Estes, Coach; Perrett, Bjorkman.
- Second Row: Davies, Cheney, Walworth, Carney, Quimby, Donohue, Badmington, Hale, Hultman, Sonniksen, Peticolas, Janssen, Hyde, Rubinow.
- Third Row: Toman, Britton, Bieber, Mildren, Brown, Markham, Herter, Horan, Kolkoski, Sullivan.
- Fourth Row: Madden, Lloyd, Braithwaite.

SOCK AND BUSKIN

The season of 1931-1932 has been very successful for the Sock and Buskin Club.

One act plays coached by members of the club have been presented in groups of two and three every month during the year. This gave everyone a chance to act at least once.

However, all efforts were concentrated on the four-act play, "Bab." The play was eagerly worked on by members of the club, who were under the capable direction of Miss Helen Estes.

PresidentGunnar Johnson
Vice-PresidentFreda Clegg
SecretaryEmily Andrews
Treasurer Stuart Joslin

THE ARRIVAL
OF KITTY



PLAYED BY
SOPHOMORE
FRESHMAN
DORLAUB
MAY

DEFINANCE
OF PIRATES



SUNG BY THE
Glee Club

BAB



PLAYED BY
SOCK & BUSBY

"Good people all, of every sort."



GIRL RESERVES

- Row 1: Dahlman, Johnsen, Hyde, Kratchmar, Janssen, Keish, Harrison, Peticolas, Johnson.
 Row 2: Miss Richmond, Leader; Cordy, Hansen, Wood, Tivnan, Aitken, Anderson, Mohr, Kelly, Mayer, Stipsits, Johnson, Tamosaitis, Matushak, Watson, Kochin, Shorts, Legg, Miss Casey, Assistant Leader.
 Row 3: Gess, Mordavsky, Martin, Piescik, Peterson, Mozzer, McCluskey, Stotenfeldt, Kerr, Kwash, Robinson, Donahue, Piper, Little.
 Row 4: Morris, Johnson, Kolkoski, Haraburda, Ludwig, McDermott, DeSimone, Williams.
 Row 5: Hunter, Strong, McComb, Tidmas, Weber.

GIRL RESERVES

At the Recognition Service of the Girl Reserves, fifty new members were added to the club. This year a plan was instituted by which every member took an active part in club work.

At Christmas, food and toys were donated to the needy. A card-party was held to raise money for the Chinese. A Y. W. C. A. Secretary from Esthonia gave a talk about conditions there.

The club was represented at the Bristol Conference by Doris Johnson. Bernice Harrison, our member of the Inter-Club Council, is Secretary of the Council.

Officers for 1931-1932 were:

- President Louise Janssen
 Vice-President Barbara Hyde
 Treasurer Louise Keish
 Secretary Phyllis Kratchmar

*"Music when soft voices die
Vibrates in the memory."*



ORCHESTRA

Seated : Little, Leslie, Hutt, E. Nickerson, Tack, Fraser, Marks, Best.

Second Row : Cashion, Viertel, Kennedy, Cude, Lyons, Miss Dorward, Director ; O'Bright, H. Brown.

Third Row : Clulow, Sullivan, Gryk, R. Brown, Gorens, Antonio, Braithwaite.

M. H. S. ORCHESTRA

Under the direction of Miss Dorward, Manchester High School Orchestra has had a busy and interesting year. Its first public appearance was at the faculty play, "You and I," in November. It assisted the combined glee clubs in presenting the Gilbert and Sullivan Opera, "The Pirates of Penzance." The orchestra participated also in the Sophomore-Freshman's presentation of "The Arrival of Kitty," "Bab," by Sock and Buskin, and the C. C. I. L. Debate.

The ensemble broadcast last February and played for several town events throughout the year.

John Hutt was concert master and Kenith Leslie assistant concert master.

We regret very much losing Miss Dorward this year and are grateful to her for the fine supervision she has given us.

The following members will leave by graduation: Esther Tack, Edith Marks and Robert Lyons.



BAND

Front Row : Mozzer, Brown, Johnson, O'Bright, Clough, Lewis, Fallon.
 Middle Row : Antonio, Brown, Bentley, Edwards, Shedd, Rylander, Braithwaite.
 Third Row : Gould, Mr. Turkington, Leader ; Lyons.

BAND

The Manchester High School Band has had a successful year. It has been well directed by Mr. Harold A. Turkington, who has conducted the band since its formation six years ago.

The band has played in two parades: one advertising the movie given to help the unemployed and the other advertising Manchester Day. They have also played at many football and basketball games. In addition to these services, the band played on Hospital Day, May 12th, and again on Class Day.

At the rally prior to the annual Bristol-Manchester basketball clash, the band had the honor of presenting, for the first time, a new school song, composed especially for the high school by Mr. Turkington.

Robert J. Lyons has been the student leader, and A. Harvey Gould, secretary of the band, for the past two years.

The band will lose, through graduation this year, Robert J. Lyons, A. Harvey Gould, and Gunnar Johnson.

"I heard the universal choir."



COMBINED GLEE CLUBS

Seated: Wilson, Remig, Fallow, DeUbaldo, Wickham, Wood, Miss Dorward, Director; Fischer, Kelly, Shelton, Lee, Kochin, MacLachlan.
Second Row: Pola, Silverstein, Segevick, Matushak, Johnson, Heubner, Holmes, Shugzda, Kupchunos, Shugzda, Hess, Sakalowski, Shorts, Proctor, Zokites, Gess.
Third Row: Loomis, Lamprecht, Blackburn, Lee, Hobby, Fairweather, Stoltenfeldt, Robinson, Track, Nickerson, Hutchinson, Hutt, Baker, Toman, Clulow.
Fourth Row: Naczowski, Lavey, Montie, Nickerson, McCabe, Bronkie, Aitken, Hilbig, Erickson, Fraser.
Fifth Row: Strickland, Gryk, Scranton, Guthrie, Leslie, McKinney, Wright, Segevick, Bars, Braithwaite, Sullivan, Raguskus, Brown, Heritage, Gorens.

GLEE CLUBS

The outstanding musical event of the school year 1931-1932 was the presentation of the "Pirates of Penzance," a Gilbert and Sullivan light opera. This is probably the most ambitious production ever attempted by the musical societies of the school. The art classes constructed a very appropriate and effective setting. The cast consisted of the following: Fred Lavey, Edward Fischer, Julius Radding, Paul Sheridan, Herbert McKinney, Gladys Wilson, Clarissa Wood, Irene Pola, Ruth Wickham, and Winifred Lee. The entire production reflected much credit on Miss Dorward and Mr. Gatchell, who coached and directed the musical and dramatic sequences respectively.

The combined Glee Clubs assisted in several assembly programs.

Although neither Glee Club ranked among the winners at the C. C. I. L. contest in West Hartford, both clubs made a creditable showing.

The officers of the Boys' Glee Club were: Edward Fischer, president; Julius Radding, secretary.

The officers of the Girls' Glee Club were: Clarissa Wood, president; Gladys Wilson, secretary; Barbara Nickerson, librarian.

Four year members are: Herbert McKinney, Julius Radding, Bella Silverstein, and Clarissa Wood.

*"But to act, that each tomorrow
Finds us farther from today."*



HI-Y

Seated: Simon, Marlow, Mr. Robinson, Leader; McKinney, President; Johnson, Bjorkman, Wright.
 Second Row: Davies, Joslin, French, Mahoney, Hultine, Burdick, Della Fera, Hadden, Shorts.
 Third Row: Kean, Heck, Robinson, Judd, Owers, Werner, Pratt, Juul.

HI-Y CLUB

PresidentHerbert McKinney
 Vice-PresidentFranklin Hadden
 Secretary and TreasurerGeorge Marlow
 LeaderMr. Chester L. Robinson
 Honorary MemberMr. William H. Petherbridge

The Manchester Hi-Y Club has just completed its eleventh successful year. Under the careful supervision of its leader and adviser, Mr. Chester Robinson, the meetings have been held on every second and fourth Tuesday of each month in the Robbins Room of the Center Congregational Church.

The purpose of the Hi-Y is to "Create, maintain, and extend throughout the high school and the community high standards of Christian character."

The club is non-sectarian and the membership is limited to the three upper classes of the high school. The biggest aim of the club is to promote the qualities of good leadership and to bring about among the members themselves the kind of thinking and acting that is honest and straightforward. In carrying out this aim, the Hi-Y club brings to each member a sense of fair play, cooperation, and of Christian thinking that is invaluable.

"Then was called a council straight."



STUDENT COUNCIL

Seated: Lithwinski, Carney, O'Leary, President; Andrews, Rubinow.
Second Row: Fischer, Mahoney, Heck, Tedford, Aceto, Judd, Wilson.
Third Row: McVeigh, Johnson.

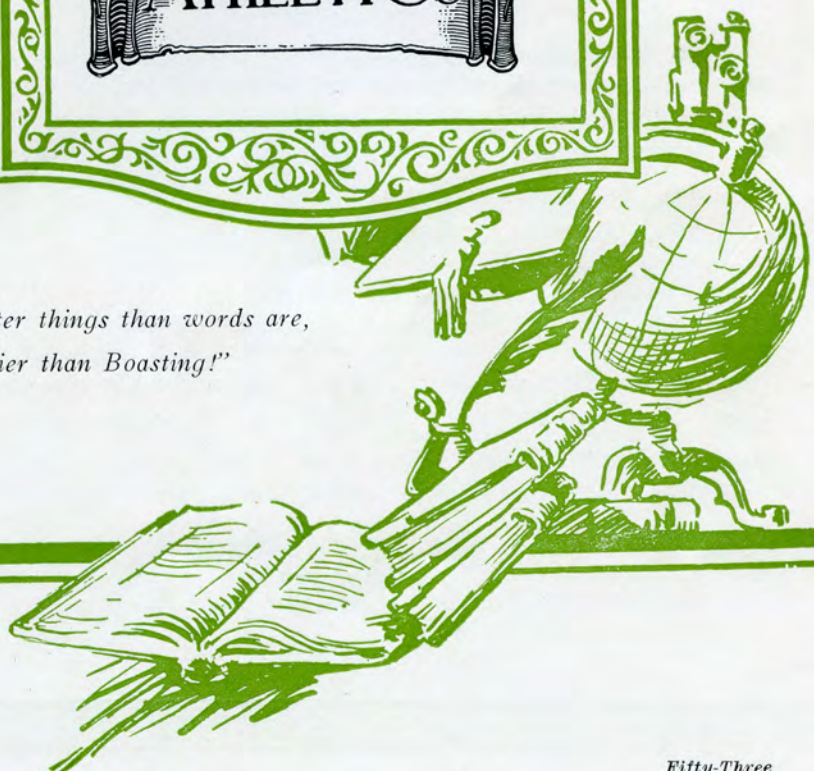
STUDENT COUNCIL

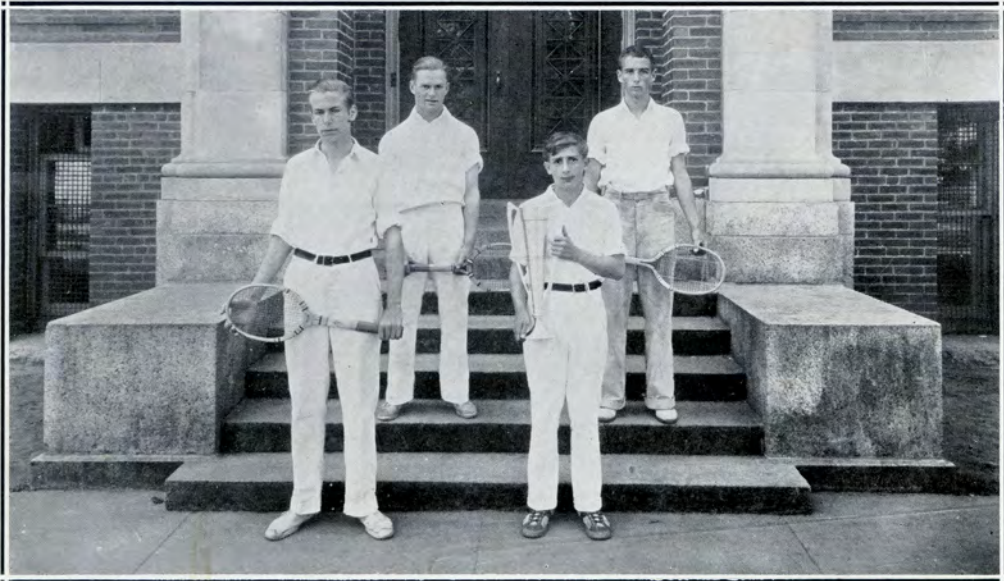
The Student Council is a body composed of the chairmen of the various home rooms of the three upper classes and the presidents of all the classes. This group meets at irregular periods with Principal Quimby and discusses matters relating to the student body. Among the more important duties of the Student Council are the awarding of all athletic letters and the appointment of all assistant managers and managers.

Through the Student Council, the student body is given an opportunity to take an actual representative part in the management and execution of many of the school affairs.



*"Deeds are better things than words are,
Actions mightier than Boasting!"*





TENNIS
Britton, Smith, Urbanetti, Kerr.

TENNIS

Our school appears to possess a very strong team this year. Only two matches have been played to date and both are victories. The team is composed of Lebro Urbanetti, Michael Brozowski, James Britton, "Rocky" Sturgeon, and Robert Smith.

SOCCER

A soccer team was organized this year under the direction of Mr. Hugh Greer. The team had a large schedule and many victories were turned in.



BASEBALL TEAM

Front Row: Mahoney, Berger, Kerr, Captain; O'Leary, Squatrito.
 Second Row: Mr. Kelley, Coach; Smith, Rautenburg, Neubauer, Katkaveck, McKinney, Manager.
 Third Row: Lashinske, Lupien, Raguskus, Ecabert, Fischer.
 Fourth Row: Lloyd, August, Bentley, Smith.

BASEBALL

Captain—OTIS KERR

Manager—HERBERT MCKINNEY

Coach—THOMAS KELLEY

TEAM

Catcher	Stanley Katkaveck
Pitcher	William Neubauer, Ray Berger, Norman Lashinske
First Base	Dominic Squatrito
Second Base	Charles Smith
Third Base	James O'Leary
Short Stop	Otis Kerr
Left Field	Francis Mahoney
Center Field	Eric Rautenberg
Right Field	Robert Smith

STARTING THE SEASON

This year's team has started off very well by winning its first seven games. According to present indications, our team should be at the top of the C. C. I. L. when the season finishes.

The team is fortunate in having a smoothly-working infield and a hard-hitting outfield. Neubauer, Berger, and Lashinske, form a capable pitching staff.



SWIMMING TEAM

Seated: Mozzner, Lithwinski, Captain; Joslin.
 Middle Row: Stechholz, Treat, Brown, Gould, Carney, Hicking.
 Third Row: Mr. Clark, Coach; Cowles, Della Fera, Manager.

SWIMMING TEAM

In spite of stiff opposition presented by college freshman teams, preparatory school teams, and large high schools, all of which are out of the usual class of high school competition, the Swimming Team had a very successful season under the fine leadership of Captain Edward Lithwinski. The season started with a bang by defeating Connecticut Aggies by a wide margin, and continued to splash its way to victory again and again. The C. C. I. L. meet at Trinity College, in which only Manchester and Bristol competed, was very close, when Dana Cowles starred in the relay to cover up a six foot lead to win the meet and the Championship for the fifth consecutive season. An enduring record was set by Captain Lithwinski in the back-stroke event, Dana Cowles set a fine record in the 40 yard dash, and Stuart Joslin broke the record for the 220 yard freestyle.

The team loses Captain Lithwinski, Leonard Hicking, and Harvey Gould by graduation, but their excellent record is fully appreciated by the school, which hopes that the team will continue to uphold its prestige in future meets.



TRACK TEAM

Seated: Smith, Lengel, Diana, Fraser, Smith, Wittmann, Captain; McCormick, Mozzer, Carey, Rowsell, Leavitt, Manager.

Middle Row: Lithwinski, Lane, Judd, Simon, Kaselauskas, Garrone, Reale, Squatrito, O'Leary, Fischer, Olson, Burns.

Third Row: Treat, Assistant Manager; Smith, Fitzgerald, Toman, Peckenham, Zapadka, Cude, Wolfram, McCormick, Lord, Johnson, Saimond, Donahue, Shedd, French, Robinson, Polozie, Bellamy, Mr. Wigren, Coach; Haraburda, Trainer.

TRACK

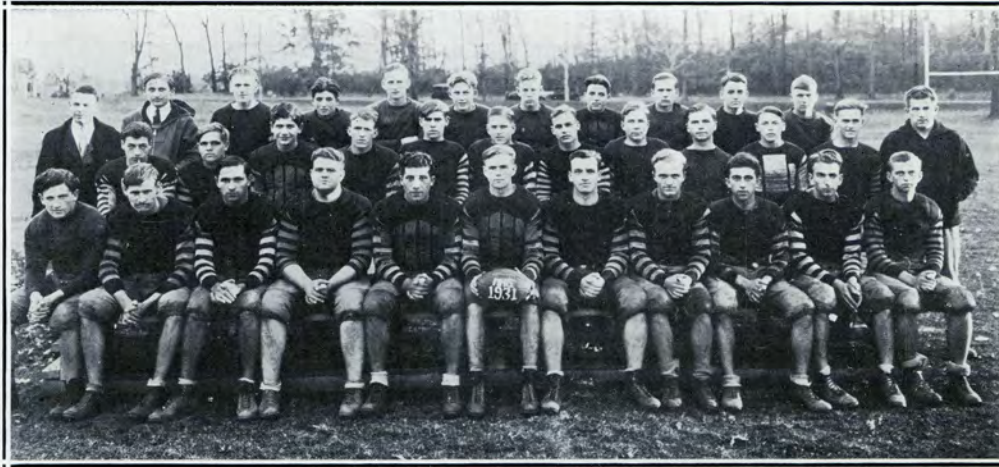
Captain—FRANZ WITTMANN

Manager—FOSTER LEAVITT

Coach—CHARLES WIGREN

REVIEW OF SEASON

Several of last year's veterans entered the State Indoor Meet at Wesleyan and captured second place for team honors. Squatrito, Wittmann, O'Leary and Lane garnered places for Manchester. A few weeks later, the Red and White opened its regular schedule by defeating Hartford, Wesleyan Frosh, and Meriden by overwhelming scores. Our team appears to be favored to capture the C. C. I. L. meet and possibly the state meet at Yale.



FOOTBALL TEAM

Front Row : Sheridan, Pratt, Berger, McKinney, Squatrito, O'Leary, Captain; Cheney, Fischer, Zapadka, Radding, Bjorkman.
 Second Row : Owers, Rowe, Saimond, Neill, Shedd, Simon, Hultine, Mozzer, Bay, Judd, Smith, Mr. Kelly, Coach.
 Third Row : Brown, Manager; Fischer, Assistant Manager; Chase, Vennart, McCormick, Niese, Treat, Della Fera, Robinson, Lupien, Ecabert.

FOOTBALL

Captain—JAMES O'LEARY
 Manager—FRANK BROWN
 Coach—THOMAS KELLEY

THE TEAM

R. E.Edward Lithwinski, Elmore Hultine	L. T.Ray Berger
R. T.Ray Pratt	L. E.Leonard Bjorkman
R. G.Julius Radding, Herbert McKinney	Q. B.Paul Sheridan
C.Raymond Mozzer	L. H. B.James O'Leary
L. G.Edward Rowe	R. H. B.Dominic Squatrito
F. B.Edward Fischer, Roger Cheney	

REVIEW OF SEASON

The football team this year was very successful. Among its victims were East Hartford, West Hartford, Fitch High, Meriden, Middletown, and Willimantic. Hartford High and Bristol were victorious, but the scores were close.



MISS FEDER
GOOD SPORT

THE WHITE
GIRLS VARSITY
BASKETBALL TEAMS



THE BLUE



GIRLS' ATHLETICS

During the past year a definite transition has been taking place in the Girls' Physical Education Department. With the motto, "Athletics for All", an interscholastic program was discarded in favor of an intramural one. Miss Blanche Feder introduced and brought into active, successful operation a progressive system by which every girl in high school is given a chance to play on some team. The school was divided into factions—the BLUE and the WHITE. Underclassmen will remain upon the team they are now on until they graduate.

Every gym class elected captains who automatically became members of Leader's Class and were coached by Miss Feder in the art of supervising.

With the girls' eager co-operation the system was enthusiastically carried through all the different sports—hockey last Fall, basketball during the Winter, and swimming and baseball in the Spring. After-school practice was held in all these sports, and every girl who came out to these practice sessions made a team. By elimination competition, an All School Blue and an All School White team was chosen in every sport. From the results of the Blue-White game, an honorary varsity team was chosen. The hockey and basketball teams played games with West Hartford and Stafford Springs high schools. These two schools have the same system.

Another interesting side to this system is the way a girl may acquire points to win school awards. The points may be earned as follows.

Class Teams	50 points
Blue or White School Team	25 points additional
Walking Record (200 miles in 3 mo.).....	25 points

The awards are as follows:

200 points	B or W
400 points	Class Numerals
600 points	MHS
800 points	Banner

These points are cumulative from year to year so that the average girl can win 200 points a year by participating in four sports a year. In this way, the Freshmen can win a banner at the end of their Senior year.

This program encourages participation in sports for enjoyment of the activity instead of for the sake of winning. The traditional enmity that thrives in an interschool program has been abolished, and, through the team organization, the basis for a more socialized attitude without losing the incentive for competition has been formed in our girls' athletics.

ATHLETIC SUMMARY

1931—1932

FOOTBALL

Manchester	0	Hartford	13
Manchester	7	Middletown	0
Manchester	0	Bristol	13
Manchester	13	Meriden	0
Manchester	20	East Hartford	7
Manchester	14	West Hartford	0
Manchester	24	Fitch High	6
Manchester	6	Windham	0

BASKETBALL

Manchester	21	Rockville	23
Manchester	9	Meriden	23
Manchester	24	Alumni	37
Manchester	15	Bristol	57
Manchester	45	East Hartford	20
Manchester	41	West Hartford	26
Manchester	40	Middletown	24
Manchester	16	Meriden	19
Manchester	32	Windham	14
Manchester	22	Bristol	24
Manchester	31	East Hartford	28
Manchester	51	West Hartford	26
Manchester	43	Rockville	16
Manchester	26	Middletown	15
Manchester	36	Willimantic	20
Manchester	27	Trade School	11

BASEBALL

Manchester	11	Rockville	6
Manchester	11	Middletown	6
Manchester	10	East Hartford	2
Manchester	4	Meriden	3
Manchester	8	West Hartford	5
Manchester	22	Middletown	8
Manchester	8	East Hartford	4
Manchester	7	Trade School	3
Manchester	13	Rockville	2
Manchester	5	Meriden	6
Manchester	6	Trade School	5
Manchester	2	Bristol	3
Manchester		West Hartford	

TRACK

Indoor Meet at Wesleyan—Manchester was Third with 18¼ Points.

Manchester	56	Hartford	48
Manchester	64 1/3	Wesleyan	
		Fresh	39 2/3
Manchester	63	Meriden	27

Out of State Meet at Rhode Island—Manchester was Third with 13 Points.

State Track Meet at Yale—Manchester was Fourth with 18 Points.

Manchester	52	Bristol	43
Manchester	62	W. Hartford	42

TENNIS

Manchester	4	West Hartford	2
Manchester	3	Rockville	3
Manchester	2	Hartford	4
Manchester	3	Weaver	2
Manchester	3	Meriden	2
Manchester	4	New Britain	2
Manchester	2	Bristol	3

C. C. I. L. Fall Tournament

Championship in singles won by R. Smith

Championship in doubles won by
J. Britton and R. Smith

CROSS COUNTRY

Captain	Albert Lengel	
Coach	Mr. Charles Wigren	
Manager	Foster Leavitt	
Manchester	36 Bacon Academy	19
Manchester	40 Norwich F. A.	15
Manchester	29 Hartford	27
Manchester	19 Middletown	36
Manchester	21 Glastonbury	34

Interscholastic Cross Country Race

Thanksgiving Day at Manchester—
Manchester placed third

GOLF

Manchester	4½	West Hartford	13½
Manchester	15	Weaver	3
Manchester	0	Meriden	18
Manchester	15	Lewis (South- ington)	3
Manchester	14½	West Hartford	3½
Manchester	9½	Lewis	8½
Manchester	4½	Meriden	13½
Manchester		Weaver	

SWIMMING

Manchester vs. Connecticut Agricultural College—Won by M. H. S.

Manchester vs. Meriden—Won by M. H. S.

Manchester vs. Canterbury Prep—Won by Canterbury

Manchester vs. Hartford Public H. S.—
Won by M. H. S.

Manchester vs. Crosby—Won by Crosby

Manchester vs. Roxbury Prep.—Won by Roxbury

Manchester vs. Bristol—Tie

Manchester won C. C. I. L. Meet

Manchester tied for third at State Meet

ATHLETIC HONOR ROLL

RAYMOND BERGER—"Ray" was star tackle on the football team for two years and also a capable hurler on the baseball team.

LEONARD BJORKMAN—"Len" was an excellent end on our football team this year.

EDWARD FISCHER—"Eddie" was our very capable fullback for two years.

OTIS KERR—"Buddy" played at forward on this year's basketball team. He is an excellent shortstop. He was also a captain of the baseball team.

JOHN LERCH—"Pop", captain of the basketball team, was our best defensive man on this year's team.

EDWARD LITHWINSKI—"Fitch" has been a mainstay on our swimming team for four years. He was also a very capable end during the football season.

JAMES O'LEARY—"Jimmie" has been an outstanding player in football, baseball, basketball, and track for four years.

ARTHUR OLSON—"Art" is a very capable javelin thrower. He holds the school record.

RAYMOND PRATT—"Ray" was a very capable tackle on the football team.

PAUL SHERIDAN—"Red" has been our star quarterback for two years.

ALBERT SMITH—"Al" has starred in basketball and track for three years. He also was a very fine pitcher on the baseball team of 1930.

DOMINIC SQUATRITO—"Squat" excelled in football, baseball, basketball and track for four years. He was the greatest athlete Manchester High School has even known.

FRANZ WITTMANN—"Wit" has been our star dash man for three years. He is captain of this year's team.



OH! MILLIE



IRMA



THE ELITE



A SOUND VIEW



THE GANG



SIDE-BY-SIDE



TOGETHER WE STAND

ANOTHER
BUNCH



LONG LONG AGO

P
A
L
S



M-H-S SINGERS





*"And either sweet or merry tale
Or rhymes and songs he'd made himself."*

McKinney: I just saw a senior boy over to Mike's, skipping.
Miss Estes: And where were you?

Miss Walsh: "My Friend" was written by Walter ——?
D. Hultman: (under her breath) Winchell!
Flo Donohue: HE hasn't any friends.

Roger McCormack wrote the following French sentence on the board:
"Je lui demandais de l'argent." (I asked him for some money.)
Miss Walsh: Explain why you use "l'imparfait."
McCormack: I had to keep asking for the money.

Of course we all remember the day one of the boys got a PASS TO MR. MICHAEL'S.

A certain girl wears an Army and a Navy button on the same chain. Her explanation of this is: "Congress is trying to put them together; so why shouldn't I?"

Freda Clegg: (in Algebra) I multiplied the men by the days.
Miss Olson: Did you get the men or the days? What would you get if you multiplied chairs by tables?

Mr. Perry: Vic, when do you use Pi (To)?
Vic Davies: Oh, after dinner—

Miss Spafard: (to J. Peticolas, who is scanning poetry). Miss Peticolas, you have no division between your feet as far as we can make out.

Anne: Yes, they've called me Anne for sixteen years.
Marjorie: I thought you were seventeen.
Anne: They called me "Baby" the first year.

In Andover, Mr. Gatchell's home town, the farmers are very witty. A farmer was busy working in the field with a tractor, when an onlooker said, "There's a small adder snake right behind you. If you go backwards, you'll run over it." The farmer went backwards. Just at the crucial moment, the onlooker said: "Adder sub tractor."



"Let the Buyer be the Judge."

Vacation Wear

STYLED RIGHT

PRICED RIGHT

Rubinow's
GARMENT FASHION CENTER

Established 1907

Flowers For All
Occasions

MILIKOWSKI *The Florist*

Hotel Sheridan Building
South Manchester, Conn.

Members of the Florist
Telegraph Delivery
Association

“SAFE MILK IS THE KEY TO HEALTH”

Summer Diet

Drink plenty of pure Wholesome Bryant & Chapman Milk this Summer. It is the first food you should buy. Indispensable for the Children's diet, it is an economical and desirable food for grownups. A bottle of our pasteurized Milk is a bottle of health. Be sure to use our Milk and other dairy products at your Shore home this summer. It is safe, and will give you greater satisfaction.

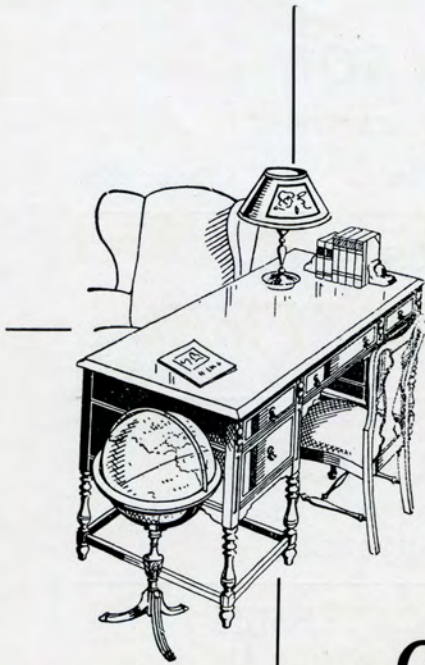
Bryant & Chapman Co.

EQUIPPED FOR REAL PUBLIC SERVICE

49 Holl Street

South Manchester, Conn.

Phone No. 7697



Good Furniture

at the lowest prices in years!

Never before in our 57 years in business, has it been so easy to own a smartly furnished home—has it cost so little to own real fine heirloom furniture. \$50, \$100 or \$150 will work wonders in bringing old interiors up-to-date—or in furnishing a home for the first time. Why be satisfied with less than Watkins Quality?

WATKINS
BROTHERS, Inc.

JOHN I. OLSON

PAINTER and DECORATOR

699 Main Street

So. Manchester

Phone 6854

HERFF-JONES CO.

MANUFACTURING JEWELERS and STATIONERS

1411-1419 North Capitol Ave.

Indianapolis

1099 Main Street

Telephone 6367

GARRONE'S MARKET

(The Store of Quality)

MEATS—FRUITS—VEGETABLES

FLORENCE'S DELICATESSEN

Imported and Domestic Delicacies HOME COOKED FOOD

571 Main Street

State Theatre Building

SHOES FOR GIRLS

FIT—STYLE—SERVICE

MISS N A V E N

Don't Buy Real Estate or Insurance

UNTIL YOU HAVE TALKED WITH

ROBERT J. SMITH

1009 Main Street

South Manchester, Conn.

QUINN'S REXALL DRUG STORE

873 Main Street

South Manchester, Conn.

MEET ME AT THE FOUNTAIN

Quality and Service

Prescriptions Our Specialty

STATE SERVICE STATION

770 Main Street

South Manchester, Conn.

Gasoline, Tire and Battery Service

The Dewey-Richman Co.
JEWELERS—STATIONERS

—
“The House of Value”
—

767 Main Street

South Manchester, Conn.

HULTMAN'S

917 Main Street

South Manchester, Conn.

Men's **CLOTHING** Boys'
FURNISHINGS and SHOES

—
QUALITY, MERCHANDISE — REASONABLY PRICED.
—

—: T H E :—

MANCHESTER
ELECTRIC COMPANY

—
MOST UP-TO-DATE ELECTRICAL
APPLIANCES
—

SO. MANCHESTER, CONN.



Dad Sets An Example

When the children were younger he started saving for them by providing them with a mechanical bank in which they could save their pennies, nickels and dimes, given to them from time to time, and then deposit them in a **SAVINGS ACCOUNT** in the bank.

He has paved the way, by example, for them so that they will understand the wisdom of saving when they are earning their own money.

THE SAVINGS BANK OF MANCHESTER

SOUTH MANCHESTER

COMPLIMENTS OF

KNIGHTS OF COLUMBUS

MANCHESTER, CONNECTICUT

SUMMER SCHOOL

SENIORS learn typing this Summer for use in College next year.

JUNIORS can use it at High next year and have it for College the following year.

SUMMER SCHOOL during July and August. Enter any Monday.



THE CONNECTICUT BUSINESS COLLEGE

G. H. WILCOX, Principal

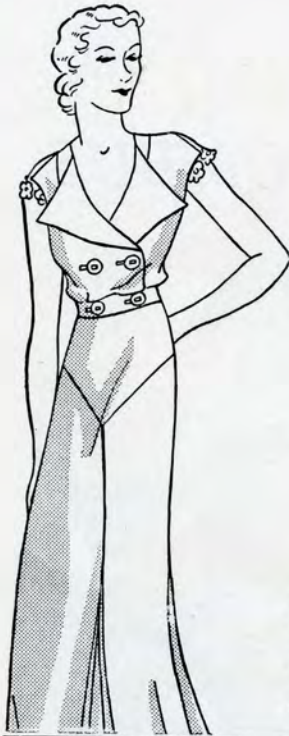
Odd Fellows Block

South Manchester, Conn.

OAKES' SERVICE STATION

563 Main Street

So. Manchester, Conn.



Quality Stays Up—Prices Step

Down . . . In
“NELLY-DON”

Summer Frocks

Without changing in the slightest degree . . . the standard of quality for which Nelly Don dresses have always been famous . . . Nelly Don has lowered prices in proportion. You'll love the new cottons—so youthful and sporty. Smart for all daytime occasions. Sold exclusively in town at Hale's—your department store.

NELLY DON FROCKS—

Main Floor - Center

The J.W. Hale Company
DEPARTMENT STORE SO. MANCHESTER, CONN.

After Graduation

WHY NOT make recreation your vocation; enjoy your work and give pleasure to others; be healthy and happy and teach others to be the same? Such is the life of a teacher of physical education.

SAVAGE SCHOOL For Physical Education

Established 1890

A Teacher Training School which prepares men and women to become teachers, directors, and supervisors of health and physical education in schools, colleges, playgrounds, clubs, private institutions, and industrial organizations.

The curriculum of the three year course includes practical instruction in all forms of athletics, gymnastics, games, dancing, swimming, dramatics, and the like; also the essential courses in education, psychology, anatomy, physiology, hygiene, and others, thoroughly covering the theory and practice of health and physical education.

**AN EXCEPTIONALLY STRONG
FACULTY**

Catalogue Upon Request

Increasing demand for teachers. Salaries higher than for grade teaching. Employment bureau for students and graduates.

Register Now For Class Entering on
September 19th, 1932

SAVAGE SCHOOL

308 West Fifty-ninth Street
New York City

COMPLIMENTS

of

PRINCESS CANDY SHOP

George M. Pazianos, Prop.

Cor. Main and Pearl Streets

Candy, Soda
Luncheonette

NORTHEASTERN UNIVERSITY



DAY DIVISION

The School of Engineering

In co-operation with engineering firms, offers curricula leading to the Bachelor of Science degree in the following branches of engineering:

Civil Engineering
Mechanical Engineering
Electrical Engineering
Chemical Engineering
Industrial Engineering

The School of Business Administration

Co-operating with business firms, offers courses leading to the degree of Bachelor of Science in the following fields of business:

Accounting
Banking and Finance
Business Management

The Co-operative Plan of training enables the student to combine theory with two years of practice and makes it possible for him to earn his tuition and a part of his other school expenses.

For catalog or any further information write to:

NORTHEASTERN UNIVERSITY
MILTON J. SCHLAGENHAUF, Director of Admissions
Boston, Massachusetts

WELL DRESSED YOUNG MEN

— T R A D E A T —

G L E N N E Y ' S

SOUTH MANCHESTER, CONN.

C. E. HOUSE & SON, Inc.

Established 1853

HEAD TO FOOT CLOTHIERS

READY-MADE CLOTHING, HATS, CAPS.

MEN'S FURNISHINGS

FINE FOOTWEAR FOR THE WHOLE FAMILY

MOHR'S BAKERY

"OLDEST ESTABLISHED BAKERY IN MANCHESTER"

DIAL 3537

We Pass Your Door Each Day

Visit our Bakery at 18 Gorman Place

M E E T and T R E A T

—With—

TREAT'S TASTY ICE CREAM

—AT—

BIDWELL'S SODA SHOPPE

IT'S A REAL "TREAT"



Lions are
Community Builders
BE A LION

LIONS CLUB
of Manchester

**BRYANT-STRATTON
COLLEGE**
of Business
Administration
Seventieth Year
Located at
Providence, R. I.

High School Graduates are invited to visit and investigate the Bryant-Stratton Economy Plan of College Education for Business. Two-Year Advance Programs or Shorter Finishing courses. Expert Vocational Counsel and Placement Service. Summer School.

For Catalogue, Address
Director of Admissions

**SUPPORT THE KIWANIS KIDDIES
KAMP IN HEBRON**

KIWANIS CLUB

Manchester — Conn.

**EAT AT THE
SILK CITY DINER**

Clean Wholesome Food

MINER'S BARBER SHOP

GOOD APPEARANCE IS ESSENTIAL FOR
SUCCESS.

DONNELLY'S

AT THE CENTER

OLLENDORFF WATCHES

Complete with bracelets **\$24.75** and up

CONKLIN PEN and PENCIL SETS

All Latest Colors **\$5.00** and up

OTHER GIFTS FOR THE GRADUATE AT REASONABLE
PRICES.

MARY ELIZABETH BEAUTY NOOK
CONGRATULATES, THE GRADUATING
CLASS

Rubinow Building, South Manchester

The Majority of the

PHOTOGRAPHS

IN THIS SOMANHIS

Made by

NEW STUDIO

We Carry A Full Line of Picture Frames

Amateur Pictures Finished

**School and College
Photographs**

OUR SPECIALTY

9 Johnson Terrace

So. Manchester, Conn.

Phone 8383

WILROSE DRESS SHOP

THE SHOP OF INDIVIDUALITY

The Earliest To Show The Latest

CARRYING THE LARGEST SELECTION OF DRESSES IN
TOWN

All Sizes Different Styles At Popular Prices
597 Main Street Hotel Sheridan Building

"WOULD YOU LIKE TO BECOME A NURSE?"

If so apply to the Superintendent of Nurses at Grace Hospital, New Haven, Connecticut. Only High School graduates accepted. Highest type curriculum offered and our graduates are eligible to register anywhere in the United States. Adequate Recreational facilities.

START EVERY DAY RIGHT

KEEP IN TOUCH with SCHOOL EVENTS

. . . both before and after graduation, by reading The Courant each morning. Detailed reports of scholastic and athletic events will be found written in an accurate, interesting manner.

The Hartford Courant

A Connecticut Institution

ROYAL ICE CREAM

M. A. ORFITELLI, Prop.

We Have A Modern and Up-To-Date
Plant in our

ROYAL TREAT

Stores, Organizations and
Family Trade Our Aim, and We
Feel Sure a Trial Will Convince
You.

27 Warren Street Tel. 8942
Manchester, Conn.

PERRETT & GLENNY, INC.

GENERAL TRUCKING

Daily service to and from Hartford, Manchester and New York.

Local and long distance furniture moving.

Agents for the United Van Service

—and—

HARTFORD, SILVER LANE & SO. MANCHESTER BUS LINE, INC.

Approved by the Public Utilities Commission

Arrangements can be made for special parties

We will at all times give full consideration to suggestions for improvements in the service.

Hartford Phone 8-2835

Manchester Phone 3063

William A. Perrett, Pres.

C. Glenney, Treas.

Phone 8860

Phone 8864

COMPLIMENTS OF

THE

ORFORD SOAP

COMPANY

FRADIN'S
APPAREL SHOP

757 MAIN STREET

SO. MANCHESTER, CONN.

CLEARY'S LUNCH
A Good Place To Eat

Telephone 3884

697 MAIN STREET

SO. MANCHESTER, CONN.

HOTEL SHERIDAN BARBER SHOP

We Specialize in

LADIES' and CHILDREN'S HAIR CUTTING

Hotel Sheridan Building

So. Manchester, Conn.

Plato Pagani, Prop.

THE DOUGAN DYE WORKS

Incorporated

Cleaners and Dyers

Harrison Street

Phone 7155

So. Manchester, Conn.

MAGNELL DRUG CO.

1095 MAIN STREET

SO. MANCHESTER, CONN.

Prescription Druggists

Telephone: Dial 4928

We Call For and Deliver

GREENBERG'S

Dyers and Cleaners

28 Oak Street

So. Manchester, Conn.

THE COFFEE SHOP

Good Food At Reasonable Prices

G. E. WILLIS & SON, Inc.

Lumber — Coal

2 MAIN STREET

MANCHESTER, CONN.

CONGRATULATIONS CLASS OF 1932

The A. Pindar Corp.

I L L U S T R A T O R S

Half-tone and Line Etching

WE HAVE SATISFIED "SOMANHIS" MANY YEARS,
CAN WE SATISFY YOU?

42 Allyn Street

Hartford, Conn.

MANCHESTER PLUMBING & SUPPLY CO.

877 Main Street

South Manchester, Conn.

A. G. Spalding--Athletic Goods

"IF IT'S HARDWARE—WE HAVE IT"

MANCHESTER MOTOR SALES CO.

Authorized Dealers



THE UNIVERSAL CAR

New Cars, Used Cars, Fordson Tractors, Parts, Service

1069 Main Street

Tel. 5462

So. Manchester, Ct.

COMPLIMENTS OF

ANCIENT ORDER of HIBERNIANS

MANCHESTER, CONNECTICUT

FLOWERS



THE PERFECT GIFT FOR EVERY
OCCASION

PARK HILL FLOWER SHOP

Leading Florists

913 MAIN STREET

SO. MANCHESTER, CONN.

Albert Steiger, Inc.

The Store of Specialty Shops

Congratulations to the Graduating Class
—and Best Wishes for Success.

MAIN AT PRATT STREET—HARTFORD, CONN.

THE SIGN OF
GOOD ICE CREAM

MADE AT
SO. MANCHESTER CONN.



It's "MADE IN MANCHESTER" at
THE DAYLIGHT FACTORY

Tel. 5250 SUMMIT STREET So. Manchester

We **Cater** *To*

**Parties, Weddings and
Entertainments**
of all kinds.

SOLD IN ALL THE LEADING SODA SHOPS

16

You'll Gladly Associate With Morse Students

They are predominantly High School graduates. Some are University graduates. They are clean and ambitious to make a success of business and of life. They come mostly from representative families of Connecticut. You'll be at home at

MORSE COLLEGE

183 Ann Street—Hartford, Conn.

16

C o m p l i m e n t s

—of—

AMERICAN CANDY CO.

Compliments of

Montgomery Ward & Co.

Department Store

Main Street

So. Manchester, Conn.

EDWARD STEARNS, Mgr.

We Can Satisfy Your Requirements

FOR

DRY GOODS

— a n d —

HOUSE FURNISHINGS

MARLOW'S

FOR

VALUES

867 MAIN STREET

DIAL 5060



Compliments of

THE JOURNAL

PUBLISHING

COMPANY

PRINTERS and PUBLISHERS

Telephones 205-206

Rockville — Conn.





YOUR CAREER

The Hartford Hospital Training School for Nurses offers you the opportunity of a professional career. Graduation from an accredited High School is required.

This year a modern educational and recreational building was opened for the students, with splendid classrooms, laboratories, library, gymnasium and swimming pool, thus affording exceptional opportunities for study and play.

The Nurses' Residence is homelike and attractive.

The School is now in its fifty-sixth year and has graduated thirteen hundred and forty-five nurses. The present enrollment is two hundred and fifty students.

Classes are admitted in September and in February.

For Further Information Address

**Principal, HARTFORD HOSPITAL TRAINING SCHOOL,
HARTFORD, CONN.**

LEONARD

ELECTRIC REFRIGERATOR



... and you need
not be a
JUGGLER

to open the door

The door of the Leonard Electric . . . with the exclusive LEN-A-DOR . . . swings open gently at the touch of a toe and reveals its jewels of health and delight and convenience.

A thoroughly dependable refrigerator unit that preserves foods perfectly without care or attention! Roomy, well arranged shelves, and exceptional ice cube capacity! One-piece porcelain interior, finished in the famous Leonard porcelain, with all corners rounded . . . "clean as a china dish!"

The new Leonard is offered in 9 beautiful models. See them to-day, and send the coupon for the free phonograph record.



**Only Leonard Gives
You ALL These
Features**

Chrome hardware, semi-concealed hinges, broom-room legs, one-piece steel exterior, table top, Leonard approved insulation, Chill-om-eter with 8 freezing speeds, metal Sanitrays with permanent sanitary finish, handy egg basket.

Keith's
Opposite High School
South Manchester

Faculty Autographs

A. A. Suppanek	Thomas F. Kelley.
Fluence P. Quincy	Hugh S. Drew
Arthur H. Deering	Gertrude Obermpt.
Elizabeth L. Olson	Mary E. Mc. Guire
Arvo C. Walsh	Mary L. Burtz.
Helen J. Estes	Nellie L. Warren
Engenia Wallace	Nathan B. Gatchell
J. N. Potter	A. Wright G. Perry
Carri B. Spafard	Helen M. Smith
Chester L. Robinson	Charles L. Wigren
Selah Richmond	James E. Wilcox
Arland Jenkins	Henry L. Farr
Elsie Ruby Emery	Marion M. Carey
Marquette Oates	Helen R. Page
Florence Hopkins	Charley E. Turner
Bertha E. Todd	Charlotte L. Silletts
M. Elizabeth Lee	Mary A. Bowen
Philip L. Emery	Blauche Feder
James L. Higgins	W. J. Clarke
Arvo M. Kellogg	Jeanne M. Low
Corinne Davis	Warriet D. Gordon
Ellenor Rogers	Edson M. Bailey
Hilda J. Anderson	E. Marion Doreward
Jane Kellogg	

Autographs

