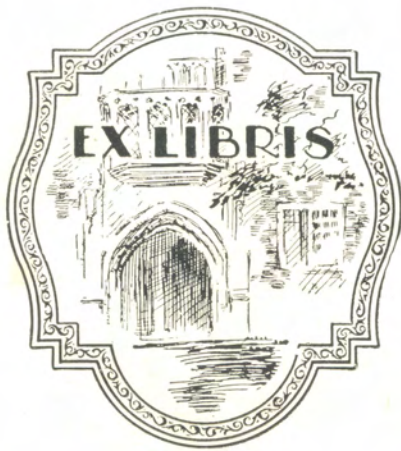
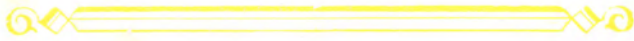


ROMANITAS



JUNE 1933



*"The never ending flight
of future days."*

CLASS POEM

Fairest dreams are before us, their beauty unknown
Is reflected in all that we do,
May we strive for the right in the crowd or alone,
To the best that we know, we'll be true.
If our efforts should fail, we will press on once more
To the goal that we've kept in our view.
When the call comes to open our Life's treasure store
All worth-while deeds will pass in review.

Lands afar we may travel when work must be done.
Duty calls with a clear, gleaming light
For our teachers have shown that the battle's not won
Till we all do our part in the fight.
Let us not be dismayed, though the clouds hover low,
On rough paths, or up steep, winding ways,
Where our Destiny guides we will follow the glow
May our deeds cast on others their rays.

—Edith H. Lippincott, '33



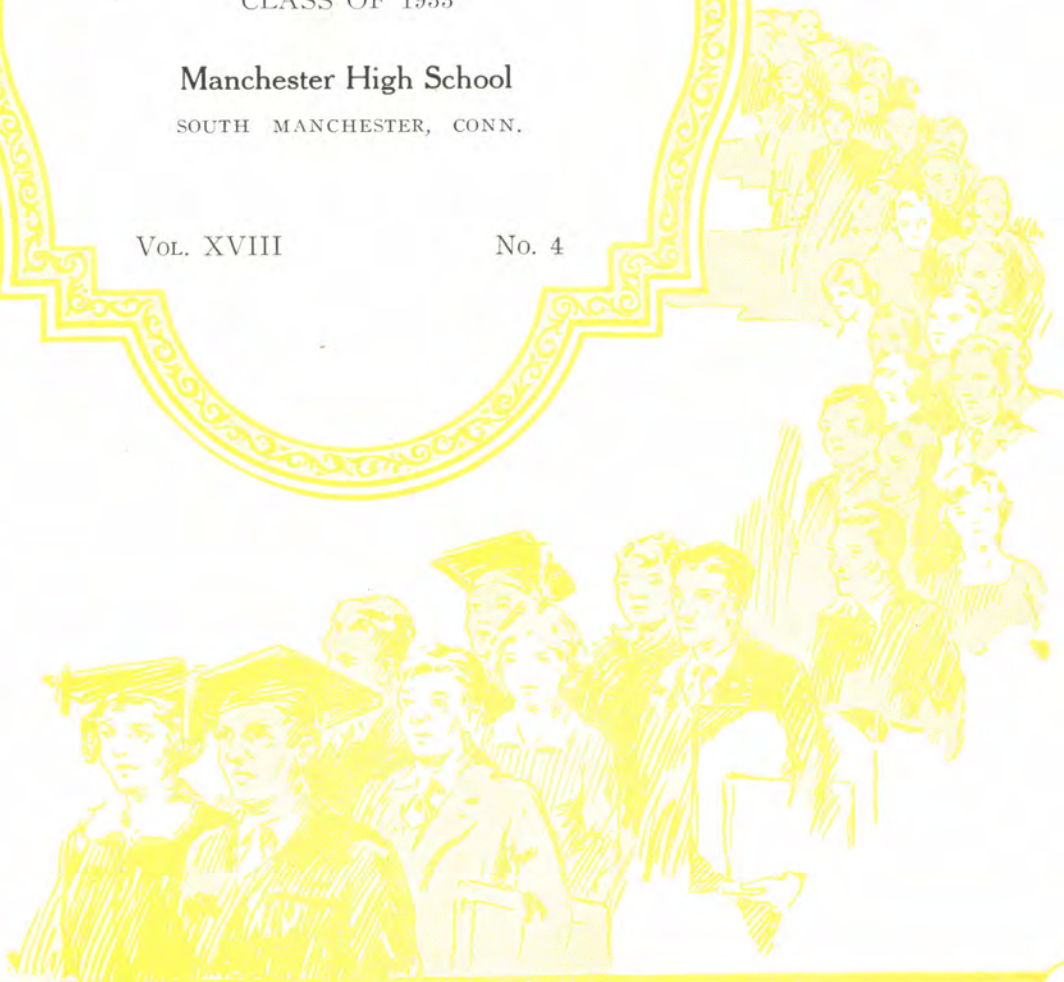
SOMANHIS

PUBLISHED BY
CLASS OF 1933

Manchester High School
SOUTH MANCHESTER, CONN.

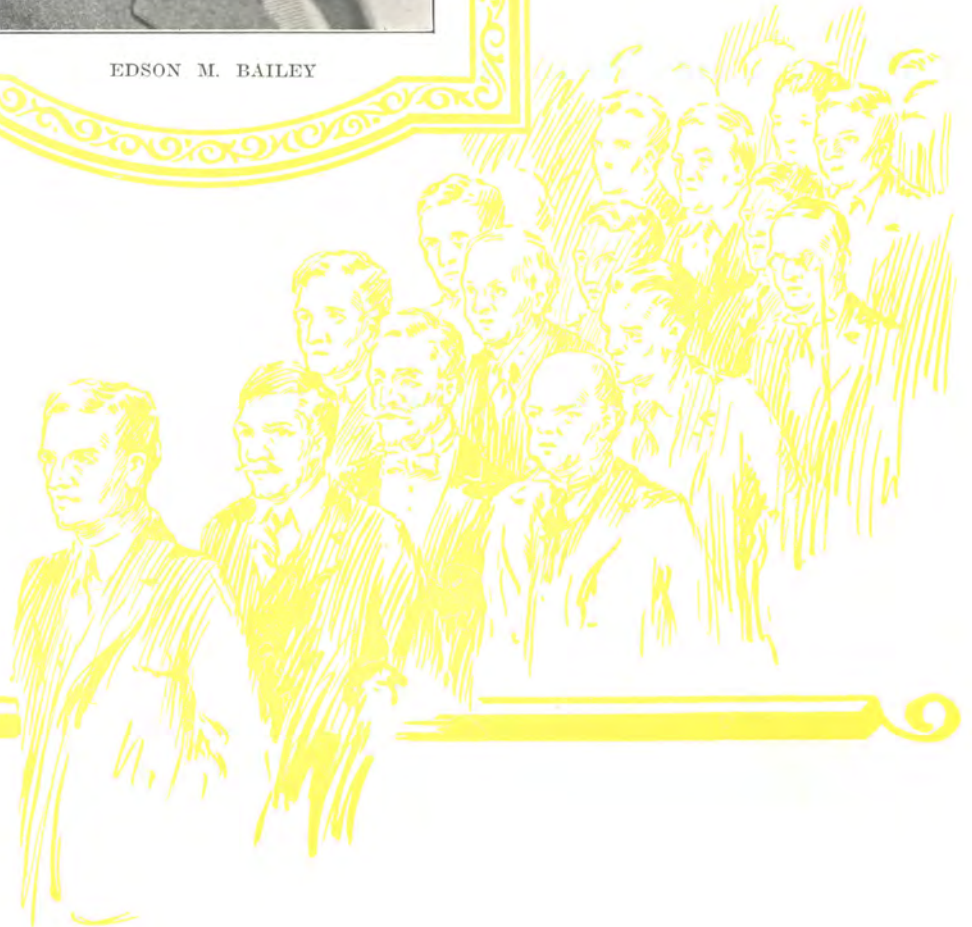
VOL. XVIII

No. 4





EDSON M. BAILEY





Dedication
to
Edson M. Bailey

Four years ago he transplanted us to this school. Since then he has cultivated us from tiny sprouts into strong saplings. He has trimmed and pruned our wayward branches, straightened each bent twig, nurtured us according to our individual needs.

Now he transplants us again—some to the sheltered greenhouses of higher learning—others to the harsh outdoor earth.

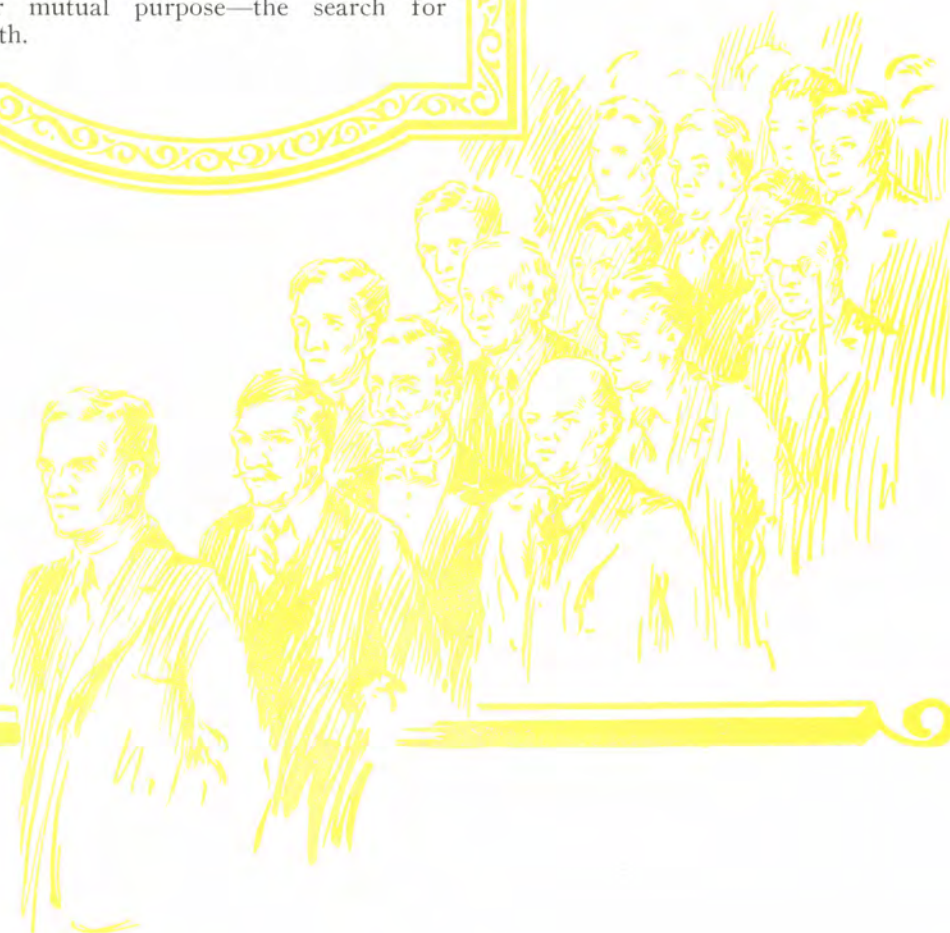
Wherever we take root, let us not disappoint our gardener. Let us blossom and bear fruit.

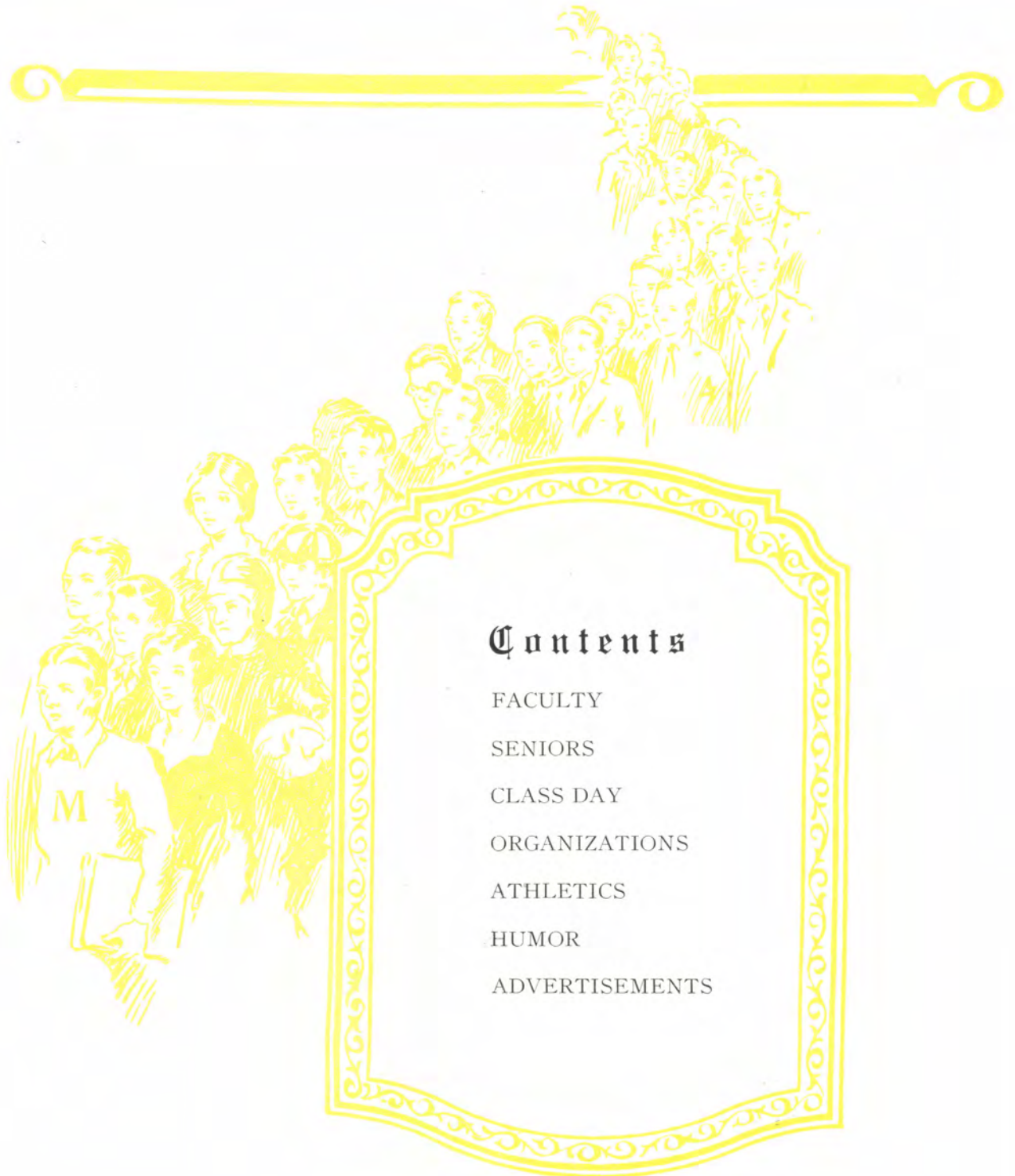
Foreword

We are together now, but not for long. During our short four years at Manchester High School, we have come to know each other intimately. Our lives have been intertwined, but the knot will soon be broken.

Each of us will drift off at a tangent from the rest. We shall be scattered over the earth. Faces now beloved will grow dim in our memories; words and deeds will be forgotten.

Only this book will remain. More lasting than human memory, it will be our only connection with the past. A glimpse into its pages will renew our faded reminiscences and remind us of our mutual purpose—the search for truth.





Contents

FACULTY

SENIORS

CLASS DAY

ORGANIZATIONS

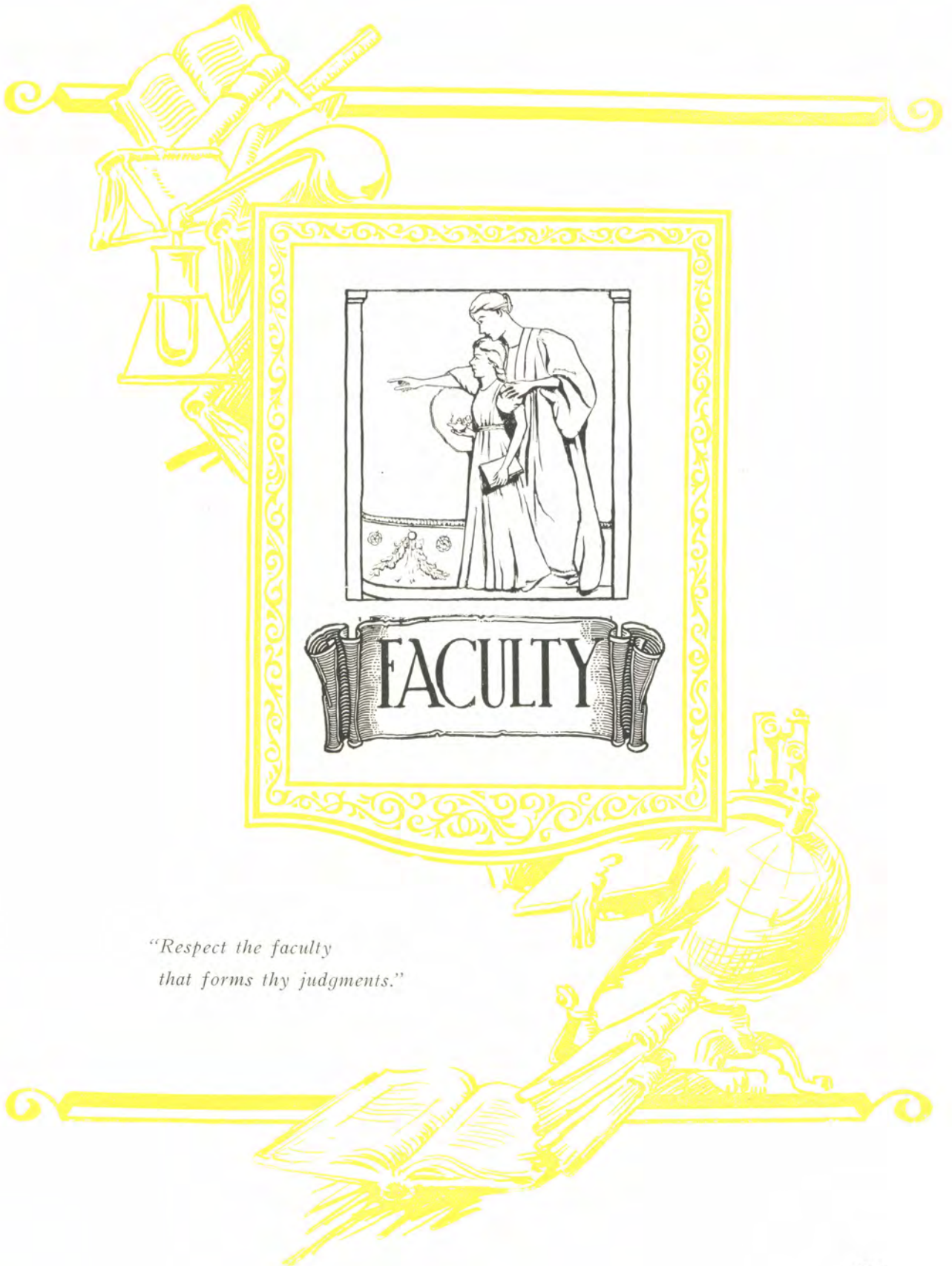
ATHLETICS

HUMOR

ADVERTISEMENTS



EDUCATIONAL SQUARE



*“Respect the faculty
that forms thy judgments.”*

Faculty Directory

Principal Clarence Paul Quimby, Bates B.A., Harvard, Ed.M.

Vice-principal Elizabeth L. Olson, Mt. Holyoke, B.A., Head of Mathematics Department.

Vice-principal Arthur L. Illing, Wesleyan University, B.S., Mathematics.

Hulda J. Anderson, Plymouth Normal, Typewriting and Stenography.

Edson M. Bailey, New Hampshire University, B.S., University of Vermont, M.A., Director of Vocational Guidance, Book-keeping.

Mary Bowen, Boston School of Domestic Art and Science, Sewing.

Dorothy Brown, Smith College, A.B., History, Mathematics, English and French.

Mary L. Burke, Colledge of New Rochelle, Ph.B., English

Marion Casey, Syracuse University, B.A., English.

Wilfred J. Clarke, New Haven Normal School of Gymnastics, Physical Training for Boys.

Harriet D. Condon, Massachusetts School of Art, Art.

Corinne Davis, Salem Normal, Typewriting and Stenography.

Philip L. Emery, Bates, B.S., Biology.

Helen J. Estes, Wheaton, B.A., Harvard, Ed.M., English.

Henry L. Farr, Bowdoin College, B.A., Ancient History.

Blanche Feder, Boston School of Physical Education, Physical Education for Girls.

Ione Fellows, Middlebury College, B.A., English.

Nathan B. Gatchell, Connecticut Agricultural College, B.S., English.

Charlotte Gillette, Worcester Domestic Science School, Simmons College, Sewing.

Hugh S. Greer, Connecticut Agricultural College, B.S., Science.

Florence B. Hopkins, Brown University, B.A., Harvard University, Ed.M., English.

Thomas F. Kelley, Bates, B.A., Algebra, General Science.

Avis M. Kellogg, Bay Path Institute, Typewriting and Stenography.

Jeanne M. Low, Bates, B.A., Middlebury College, M.A., French.

Mary McGuire, New Britain State Normal, New York University, B.S., Mathematics.

Marguerite Oates, Mt. Holyoke, B.A., Social Science.

Gertrude Oberempt, Brown University, Ph.B., Civics.

Helen Page, Columbia University, B.S., English.

G. Albert Pearson, Skidmore School of Music Pedagogy, Music.

Dwight E. Perry, University of Minnesota, B.S. Columbia University, M.A., Mathematics.

Arthur N. Potter, Brown University, Ph.B., University of Chicago, M.A., Social Science.

Selah Richmond, Earlham College, B.A., English.

Chester L. Robinson, Colby College, B.S., Chemistry and Physics.

Helen M. Smith, Framingham Normal School, Home Economics.

Carrie B. Spafard, Wesleyan, B.A., Latin.

Beulah E. Todd, Brown University, B.A., Brown University Graduate School, M.A., French.

Harold Turkington, M. H. S., '20, Conductor of High School Band and Orchestra.

Charles E. Turner, Massachusetts State College, B.S., General Mathematics and General Chemistry.

Avis C. Walsh, Wellesley, B.A., Head of English Department.

Eugenia Walsh, Connecticut College for Women, B.A., Head of French Department.

Nellie Q. Warren, Bay Path Institute, Business Training.

Charles L. Wigren, Wesleyan, B.A., Mathematics.

George H. Wilcox, Rochester Business Institute, Bookkeeping, Typewriting, and Commercial Arithmetic.

Janet E. Wilcox, Smith College, B.A., Latin and English.

Russell A. Wright, State Teachers College, Salem, Massachusetts, Northeastern University, B.S., in Ed., Bookkeeping, Commercial Law, Commercial Arithmetic, and Salesmanship.



FACULTY MEMBERS

Left to Right

- First Row: Mr. Wilcox, Mr. Clark, Mr. Turner, Mr. Gatchell, Mr. Potter, Mr. Wright, Vice Principal Illing, Mr. Greer, Mr. Robinson, Mr. Perry, Mr. Bailey.
- Second Row: Miss Hopkins, Miss A. Walsh, Miss Page, Miss Feder, Miss Wilcox, Miss Rogers, Miss Fellows, Miss Todd, Miss Anderson, Miss Estes, Miss Walsh.
- Third Row: Miss Low, Miss Davis, Miss Brown, Miss Oates, Miss McGuire, Miss Richmond, Miss Smith, Miss Casey, Principal Quimby.
- Fourth Row: Mr. Wigren, Mrs. Warren, Miss Oberempt, Miss Burke, Vice-Principal Olson, Miss Spaford, Miss Kellogg, Mr. Farr, Mr. Emery.

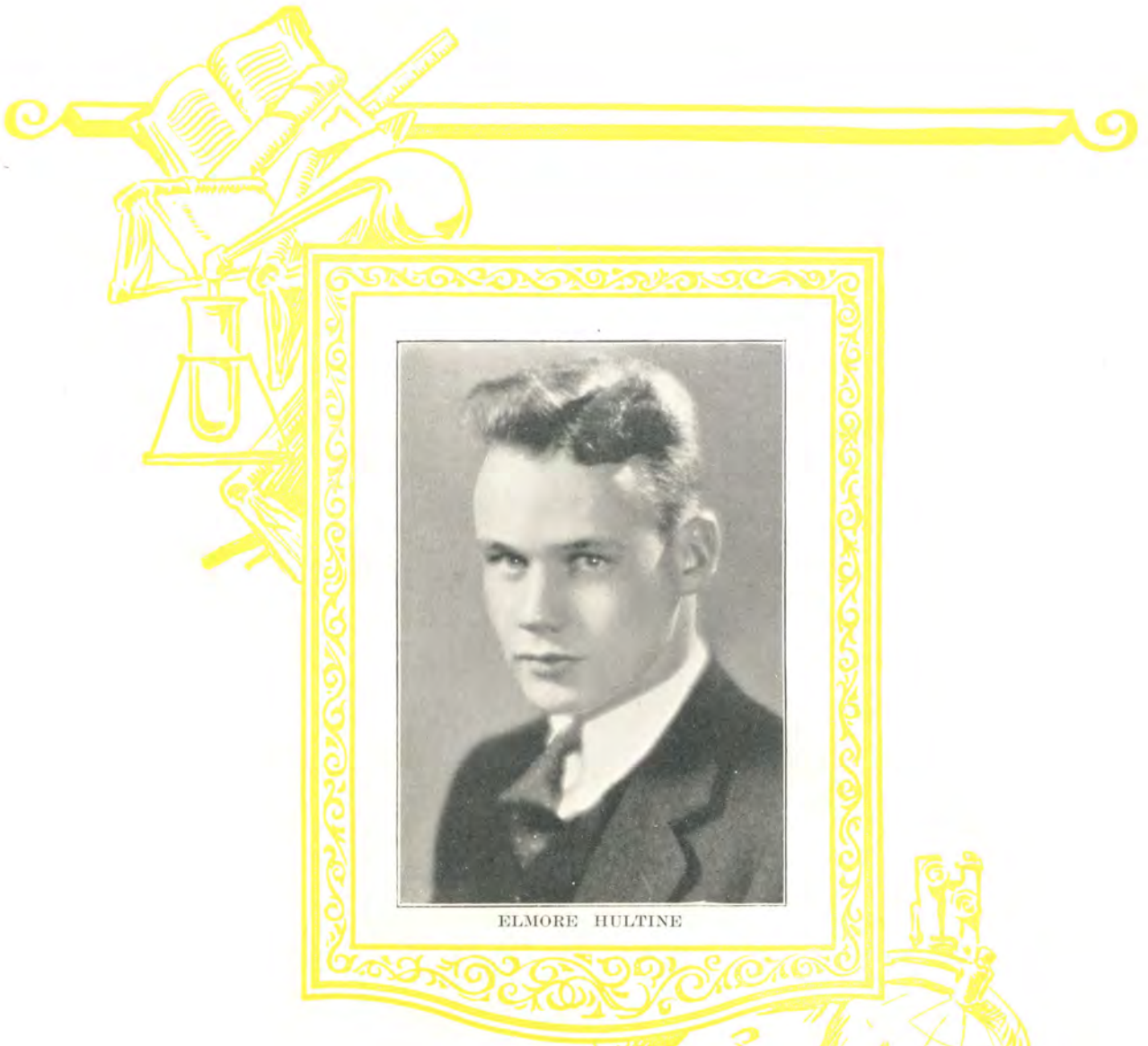
A FRIEND—

One who lends,
 And one who borrows, too.
 One who sees
 Your inward needs,
 Who is faithful and is true.
 One concerned
 With what you've learned
 And what you would you knew.
 One who finds
 Your greatest mind—
 That's a teacher, dear to you.

C. Treat, '33



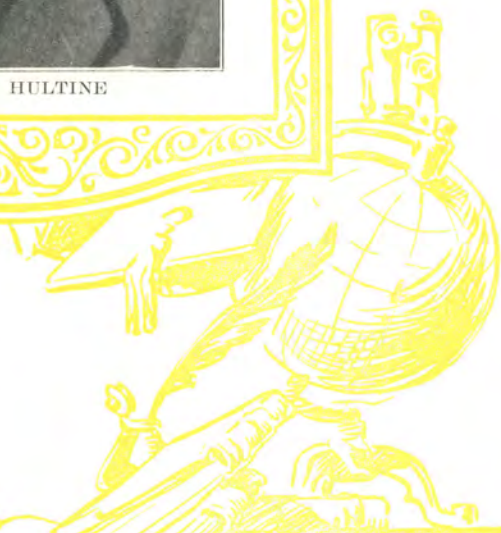
MANCHESTER HIGH SCHOOL



ELMORE HULTINE

Seniors

"Knowledge is indeed that which, next to virtue, truly and essentially raises one man above another."



CLASS OFFICERS

President, ELMORE HULTINE
Vice-President, BARBARA HYDE
Treasurer, HERMAN HECK
Secretary, ADELIA CULLIN

CLASS SONG

Sing once again, my comrades; join in the chorus.
Raise up your voices in a thundering song.
Hard is the road of life that stretches before us.
While we're together it will not seem so long.
Soon we must drift apart,
Each with a breaking heart,
Thinking of comrades we no longer shall see.
Sings once again although a shadow hangs o'er us,
Daughters and sons of '33.

Sing of the pleasures we are leaving behind us.
Sing of the labors that we cheerfully bore.
Sing of the slender silken shackles that bind us.
Sing of the customs that shall hold us no more.
Sing from your hearts again
Mem'ries of what has been.
Let us remember them wherever we be,
On to the destiny which fate has designed us,
Daughters and sons of '33!

James Toman, '33

CLASS MOTTO

"Possunt, quia posse videntur."

"They can who think they can."

VIOLA ADAMSON

"CELLO"

"For she was just the quiet kind,
Whose virtues never vary."

Girl Reserves, 4; Junior Red Cross 1.



FREDERICK BAKER

"FRED"

"Give me today and take tomorrow."

Glee Club 2, 3, 4.

ALICE AITKEN

"Herein is revealed the most manifest sign of wisdom, a continued cheerful disposition."

Dramatic Club 1; Leader's Class 2, 3, 4; Basketball 1, 2; Hockey 2; Swimming 1, 2; Girl Reserves 3, 4; President Girl Reserves 4; Glee Club 3, 4; Sock and Buskin 4; Cast of "Torchbearers" Class Secretary 2, 4; Class Party Committee 2, 3, 4; Junior Prom Committee 3; Student Council 4; Honor Student; Honor Roll 20.



LUCY LOUISE BARRERA

"Humble because of knowledge,
Mighty by sacrifice."

Vice President, Argonaut Club 1; Leader's Class 2, 3; Girl's Varsity Hockey 3; Girl's Inter-class Basketball 3, 4; French Club 3; Sophomore Class Party Committee 2; Girl Reserves 4; "Somanhis" Staff 4; Honor Roll 22; Valedictorian.

ROBERT ALEXANDER

"BOB"

"This world is harsh and strange;
Something is wrong; there needeth a change."

Inter-class Basketball 1, 2; Inter-class Swimming 1, 2, 4; Torch Club 1; Glee Club 4; Inter-class Track 1, 2, 3.



TADDEUS BARS "TED"

"A town that boasts inhabitants like me
Can have no lack of good society."

Football 1; Baseball 1; Orchestra 1, 2, 3; Glee Club 2, 3.

EMILY ANDREWS

"Age cannot wither her, nor custom state
Her infinite variety."

Argonaut Club 1; Student Council 1, 3; Class Secretary 1; Class Vice-President 3; Prom Committee 3; Class Ring Committee 3; Leader's Class 2; Pep Club 3; Sock and Buskin 3, 4; Somanhis Staff 4; Varsity Hockey 3; Varsity Girl's Basketball 4; Class Basketball 1, 2, 3, 4; Honor Student; Honor Roll 15.



HENRY BAY "HARRY"

"Be slow in choosing a friend,
Be slower in changing."

Torch Club 1; Football 1, 2, 3, 4; Basketball 1, 2; Baseball 1.

JAMES ANTONIO

"Tis not what man does which exalts him
But what man would do."

Orchestra 1, 2, 3, 4; Band 1, 2; Glee Club 1, 2.



JAMES CAREY BAYLISS

"COUNT"

"Ability wins for us the esteem of true men."

Torch Club 1; Glee Club 1, 2, 3, 4; Swimming Team 2.

JESSIE BELLAMY

"JESS"

"It's love, it's love that makes the world go 'round."

Basketball 2, 3; Glee Club 2, 3, 4; Girl Reserves 4.



FREDERICK BIEBER

"DUKE"

"They who have light in themselves will not resolve as satellites"

Argonaut Club 1; Orchestra 1, 2; Glee Club 2, 3; Sock and Buskin 3, 4; Cast of "Torchbearers" 4; Tennis 3, 4; Debating 4; Hi-Y 4; Honor Roll 5.

GERTRUDE BENSCHÉ

"BENNY"

"Her cares upon her rest but lightly,

For she is lively, young and sprightly."

Tumbling Team 2; Dramatic Club 1; Girl's Basketball 1, 2, 3; Girl's Hockey 1, 2; Honor Roll 14; Honor Student.



LAURA BISSELL

"A face with gladness overspread;

Sift smiles by human kindness bred."

Life Saving 1; Girl's Swimming Team 1; Basketball 1; Girl Reserves 4.

HUGO BENSON

"RICE"

"Good sense is a thing all need, few have, and more think they want."



ELIZABETH BLACKBURN

"BETTY"

"Talkers are no good doers, be assured,

We go to use our hands and not our tongues."

Glee Club 3, 4.

EVERETT W. BENTLEY

"EV"

"Give your decisions; never your reasons,

Your decisions may be right, but your reasons are sure to be wrong."

Torch Club 1; Baseball 3.



WILLIAM BRAITHWAITE

"BILL"

"Sleep the sleep that knows no breaking,

Morn of toil, nor night of waking."

Torch Club 1; Band 1, 2, 3, 4; Orchestra 2, 3, 4; Glee Club 1, 2, 3, 4; Sock and Buskin 3, 4; Hockey Team 2, 3.

MARJORIE BEST

"MARGE"

"Let thy speech be better than silence, or be silent."

Latin Club 1; French Club 3; Honor Roll 15.



JOHN BRANNICK

"JACK"

"Sensible men show their sense by saving much in few words."

Student Council 1, 2; Torch Club 1.

MAYNARD W. BRIGGS

"BRIGGSIE"

"In much wisdom is much grief."

Dramatic Club 1.



JOSEPHINE BROWN "JO"

"She has more thoughts than words."

Science Club 1; Honor Roll 2.

JAMES BRITTON "JIM"

"A sceptred hermit, enwrapped in the solitude of his own originality."

Tennis 1, 2, 3, 4; Captain, Manager, Tennis 3, 4; Sock and Buskin 3, 4; Cast of "Bab"; "Reach for the Moon"; Debating 3, 4; Triangular Debating Team 4; Glee Club 1, 4; Honor Roll 10.



THOMAS RAY BROWN

"RAY"

"One thing is forever good That one thing is success."

Glee Club 1, 2; Inter-class Football 1, 2; Honor Roll 1.

DORIS BRONKIE "DOT"

"Women are never so likely to settle a question rightly, as when they discuss it freely."

Glee Club 3; Basketball 1, 2, 3.



PHYLLIS BURNHAM

"PHIL"

"Who doth ambition shun And loves to live in the sun."

Swimming Team 2; Tumbling Team 2; Leader's Class 2; Junior Red Cross 1; Glee Club 4.

ARTHUR BROWN "ART"

"Discords make the sweetest airs."

Track 2; Orchestra 3; Leaders Class 3.



BERNICE CAMPBELL

"BUNNY"

"The race is not to the swift, Nor the battle to the strong."

Argonaut 1; Inter-class Basketball 1, 2, 3; French Club 3.

JOHN BROWN "BROWNIE"

"A man is known by the company he keeps."

Torch Club 1; Science Club 1.



EVELYN CARLSON

"CARLY"

"Patience is the best remedy for every trouble."

Argonaut Club 1; French Club 2; Honor Roll 14; Honor Student.

LILLIAN CARNEY "LIL"

*"On with the dance!
Let joy be unconfined."*

Argonaut Club 1; Student Council 1, 2, 3; Sock and Buskin 3, 4; Debating 4; Leader's Class 2; Somanhis Staff 4; Pep Club 3; Prom Committee 3; Honor Roll 22; Honor Student.



SADIE COPELAND

"SALLY"

*"Be great in act, as you have
been in thought,
Suit the action to the word
and the word to the
action."*

Dramatic Club 1; Girl Reserves 4; Honor Student; Honor Roll 18.

JANE HALL CAREY

"What I think, I must speak."

Glee Club 3; Girl Reserves 4.



DANA COWLES

"COWLSIE"

*"Unless one is a genius, it
is best to aim at being in-
telligent."*

Swimming Team 1, 2, 3, 4; Captain of Swimming Team 4; President of Torch Club 1; Glee Club 4; Student Council 4; Class Treasurer 3; Junior Prom Committee 3.

BEATON JOHN CASE

"CASEY"

*"Hold the fort! I am com-
ing!"*

Glee Club 1, 2; Orchestra 1; Band 1.



TRUMAN CROWLES

"TRUE"

*"Strong towers decay,
But a great name shall never
pass away."*

Honor Roll 9; Honor Student.

DORIS CERVINI "CHICK"

*"A bundle of mischief, an
ocean of smiles."*

Argonaut Club 1; Captain White Team 4; Leader's Class 2, 3, 4; Basketball 2; Varsity Basketball 3.



ADELIA CATHERINE
CULLIN

"DELE"

*"Sweeter also than honey
and the honeycomb."*

Argonaut Club 1; Class Secretary 4.

MAYNARD CLOUGH

"DILL"

*"One thing is forever good.
That one thing is success."*

Torch Club 1; Band 1, 2, 3, 4, Orchestra 4; Inter-class Basketball 2.



MAYBELLE CUNNINGHAM

"MAB"

*"At learning's fountain it is
sweet to drink,
But 'tis a nobler privilege to
think."*

Honor Roll 1.

DOROTHY DALTON

"DOT"

"I do not know or care how love occurs."

Junior Red Cross 1.



GENO PETER ENRICO

"GELOP"

"If you are in doubt act as if you knew."

Varsity Basketball 4; Basketball Squad 2, 3; Freshman Basketball; Varsity Soccer 3, 4; Somanhis Staff 4; Inter-class Baseball; Inter-class Track.

COLIN VICTOR DAVIES

"VIC"

"They who are pleased themselves must always please"

Sock and Buskin 3, 4; Somanhis Staff 4; Soccer Team 3, 4; Student Council 4; Cast of "Bab"; "The Torch Bearers"; and "Reach for the Moon"; Hi-Y 3, 4; Treasurer of Sock and Buskin 4; President of State Hi-Y 4; Class Basketball 4; Tennis 4; Honor Roll 5.



FRED ENGLAND "FRITZ"

"Measures, not men, have always been my work."

Argonaut Club 1; Freshmen Basketball; Torch Club 1; Basketball Squad 2; Honor Roll 5; Class Football 1, 2; Class Soccer 3; Class Basketball 2, 3, 4.

FRANCIS N. DELLAFERA

"NICK"

"Something is rotten in the state of Denmark."

Torch Club 1; Argonaut Club 1; Hi-Y 3, 4; Inter-class Track 1, 2; Inter-class Basketball 1, 2.



HAZEL GERTRUDE DRIGGS

"Second thoughts often times are the very most of all thoughts."

Junior Red Cross 1; Glee Club 1, 2; Sock and Buskin 4; In cast of "Reach for the Moon"; Cheer Leader 2; Girl Reserves 2.

F. P. DELLAFERA

"FRITZ"

"What one has, he ought to use; and whatever he does, he should do with all his might."

Torch Club 1; Student Council 1; Inter-class Basketball 1; Football; Soccer; Varsity Football 3, 4; Asst. Manager Swimming 2; Manager Swimming 3, 4; Varsity Tennis 4; Class Photo Committee.



MARY DOLAN

"MARY ANNE"

*"Her angel's face,
As the great eye of heaven,
shone bright,
And made a sunshine in the shady place."*

Argonaut Club 1; French Club 3; Girl Reserves 4; Honor Roll 6.

GLENNA MARION DENTON

"GLENNIE"

*"All who joy would win
Must share it—Happiness is
born a twin."*

Argonaut Club 1; Thread and Needle Club 1; French Club 3; Girl Reserves 4; Honor Roll 2.



DOROTHY DEWEY

"DOT"

*"Roses are her cheeks
And a rose her mouth."
Somanhis Staff 4.*

ARTHUR FALLON "ART"

"Who does the best his circumstances allow, does well, acts nobly, angels could do no more."

Glee Club 1, 2; Orchestra 4; Band 1, 2, 3, 4; Somanhis Staff 4; Honor Roll 12.



EVELYN C. FISH "EVE"

"A fair exterior is a silent recommendation."

Thread and Needle Club 1; Honor Roll 5.

PHYLLIS FALLOW

"PHIL"

"Less, Less, Less and then still less."

Dramatic Club 1; Girls Glee Club 2, 3, 4; Decorating Committee 3.



JOHN FRANCIS FITZGERALD "RED"

"Why care for grammar As long as we are good."

Somanhis Business Staff 4; Class Track 3; Argonaut Club 1; Honor Roll 1.

CHESTER M. FERRIS

"CHET"

"And if I laugh at any mortal thing 'Tis that I may not weep."

Glee Club 1, 2.



LOIS FOSTER "LO"

"To listen well is as powerful a means of influence as to talk well, and is as essential."

Honor Roll 10.

MARIE FINKBEIN

"Diligence is the mother of good fortune."

Junior Red Cross 1; Honor Roll 3.



THOMAS FREEBURN "TOM"

"Much learning does make me mad."

Freshman Dramatic Club 1; Glee Club 4; President, Glee Club 4.

GEORGE FISCHER

"The greatest truths are the simplest."

Student Council 1; Assistant Manager Football 3; Manager of Football 4; Baseball 2, 3.



CHESTER FREEMAN "CHET"

"They move easiest who have learned to dance."

Freshman Dramatic Club 1; Freshman Swimming 1; Inter-class Swimming 1, 2; Glee Club 1, 2, 3; Student Council 3; Prom. Committee 3; Somanhis Staff 4.

KINGSLEY FRENCH

"KING"

*"The most manifest sign of wisdom
Is a continued cheerfulness."*

Argonaut Club 1; Glee Club 2; Hi-Y 3, 4; Sock and Buskin 4; Cast of "Reach for the Moon"; Track B 4; Cross Country 4; Captain Cross Country 4; Honor Roll 20; Honor Student.



MARGARET GREENE

"GREENIE"

"A student and smile is a good combination."

Home Room Basketball 1; Freshman Dramatic Club; Girl Reserves 3, 4; Honor Roll 18; Honor Student.

LILLIAN GAMBOLATI

"GYP"

"I'd rather be a good sport than be a king, or anyone I've seen."

Junior Red Cross 1; Basketball 1, 2, 3, 4.



WASLO GUDJUNIS

"GUH"

*"Reserved, not haughty, calm, not sad
A thoughtful worthy quiet lad."*

ANNA MARGARET GILL

"NANCY"

*"To those who know thee not, no words can paint;
And those who know thee, know all words are faint."*

Argonaut 1; French Club 3; Girl Reserves 4; Honor Roll 22; Honor Student.



HELEN GUSTAFSON

"GUS"

"A contented spirit is the sweetness of existence"

Junior Red Cross 1; Home Room Basketball 1, 4; Girl Reserves 2; Honor Roll 5.

MABEL J. GRAHAM

"SUSIE"

*"She walks with others side by side
But still her haughtiness is her pride."*

Glee Club 1.



MARY HAYES

*"Do you know I am a woman
When I think, I must speak"*

Junior Red Cross 1; Sock and Buskin 2, 3, 4; Girl Reserves 4; Honor Roll 1.

GORDON GRANT

"GIMP"

"Bashfulness is an ornament to youth, but a reproach to old age."



HERMAN HECK

"GOOGIE"

"She looked in my face till my heart was like to break."

Student Council 3; Somanhis Staff 3; Somanhis Business Manager 4; Hi-Y Club 3; President Hi-Y 4; Class Treasurer 4.

JOSEPHINE ELIZABETH
HECKLER

"JOSIE"

*"Those brown eyes
For pure and honest in ought
to disguise
The sweet soul shining
through them."*

Junior Red Cross 1.



MARY HITT "MUREE"

"A hit, a very palpable hit."

Glee Club 4; Science Club
1, 2; Jr. Red Cross 1; Honor
Roll 1.

EARLE HERRICK

*"A pleasant youth, most
genial, frank;
A character of highest rank."*



ELEANOR HOBBY "EL"

*"There are souls in this
world that have the gift of
finding joy everywhere"*

Girls Glee Club 2, 3, 4;
Secretary Science Glee Club
4; Inter-class Basketball 2.

RAYMOND FLOYD
HERITAGE

"RAY" "CURLY"

*"Beard is never the true
standard of brains."*

Glee Club 1, 2, 3, 4.



DOROTHY HORVATH

"DOT"

*"A merry heart doeth good
like medicine."*

Glee Club 4; Girl Reserves
4; Honor Roll 6.

ELAINE HILBIG "LAINIE"

*"She is pretty to walk with
And witty to talk with,
And pleasant, too, to think
upon."*

Thread and Needle Club 1;
Science Club 1, 2; Glee Club
3, 4; Girl Reserves 4; Honor
Roll 6.



ELEANOR HUEBNER "EL"

*"And once the sense of height
and passage gripped, why
I must fly!"*

Would Be Players 1; Glee
Club 1, 2, 3; Varsity Hockey
2, 3; Senior Life Saving 4;
Tennis Team 2, 3, 4; Captain
of Tennis Team 3; Girl's
School Tennis Champion; Sec-
retary of Glee Club 4; Honor
Roll 6; Somanhis Staff.

JOHN ARTHUR HILLMAN

"JOHNNIE"

*"My right eye itches; some
good luck is near."*

Soccer 3, 4; Track 3, 4.



ELMORE HULTINE

"SWEDE"

*"Smiling always with a
never-fading serenity of
confidence."*

Argonaut Club 1; Swim-
ming 4; Golf 2, 3, 4; Foot-
ball 3, 4; Captain of Foot-
ball 4; President of Senior
Class; Hi-Y 3, 4; Vice-Presi-
dent of Hi-Y 4; Student
Council 4; Honor Student;
Honor Roll 12.

ELEANOR HUNTER "L"

*"A countenance in which did meet
Sweet records, promises as
sweet."*

Argonaut Club 1; Science Club 1; Girl Reserves 3, 4; Quotations Committee 4; Honor Roll 9; Honor Student.



CLYDE JOHNSON

"TUBBY"

*"The word impossible is not
in my dictionary."*

JESSIE HUTCHINSON

"MICKEY"

*"And Jessie's eyes are, oh so
blue,
And full of sweet revealings,
They seem to look you
through and through,
And read your inmost feel-
ings."*

Argonaut Club 1; Junior Red Cross 1; Science Club 1, 2; Girl's Glee Club 3, 4; President Girl's Glee Club 4.



DORIS JOHNSON "DOT"

*"Heart in her lips and soul
within her eyes.
Soft as her clime, and sunny
as her skies."*

Argonaut Club 1; Tumbling Team 1; Basketball Team 1, 2; Girl Reserves 3, 4; Girl Reserve Secretary.

BARBARA HYDE "BOB"

*"High-erected thoughts seat-
ed in the heart of country."*

Argonaut Club 1; Class Vice-President 1, 4; Student Council 1, 2; Girl Reserves 2, 3, 4; Vice-President Girl Reserves 3; Girl's Hockey Team 3; Class Basketball 3, 4; Sock and Buskin 3, 4; Cast of "Reach for the Moon" 4; Somanhis Staff 4; Honor Roll 22; Honor Student.



ELSIE JOHNSTON "EL"

*"Nothing is so difficult but
it may be found out by
seeking."*

Argonaut Club 1; Science Club 2; Glee Club 4; Honor Roll 7.

MADLINE JACQUEMIN

"MAD"

*"The power of applying at-
tention, steady and undis-
sipated, to a single object,
is the sure mark of a
superior genius."*

Junior Red Cross 1; Natural Science Club 1; Honor Roll 6; Girl Reserves 4.



MIRIAM JONES "MIM"

*"The best part of beauty is
that which no picture can
express."*

Argonaut Club 1; Tumbling Team.

BLENDA JOHNSON

"BENNY"

*"From the crown of her head
to the soul of her foot,
she is mirth."*

Secretary of Freshman Thalian Club; Tumbling Team 2; Swimming Team 2; Varsity Hockey Team 3, 4; Glee Club 3; Treasurer Glee Club 4; Junior Life Saving 3; Senior Life-Saving 4.



STUART JOSLIN "STU"

*"The hand that follows in-
tellect will achieve."*

Argonaut Club, President 1; Swimming Team 2, 3, 4; Sock and Buskin Treasurer 3; Sock and Buskin, President 4; Hi-Y Club 3, 4; Hi-Y Sec.-Treas. 4; Student Council 4; Asst. Editor Somanhis 4; Cast of "Torch Bearers" 4; Debating Club 3, 4; Triangular Debating Team 3, 4; Honor Roll 20; Honor Student Ivy Orator.

CONSTANCE KARPUSKA

"CONNIE"

"All her faults are such that we love her still the better."

Thread and Needle Club 1; Glee Club 1; Honor Roll 6.



AGNES KASULKI "AGGIE"

"Having little else to do And given to imagination, She can break a word in two

To make it fit the situation."

Argonaut Club 1; Thread and Needle Club 1; Junior Red Cross 1; Science Club 1.

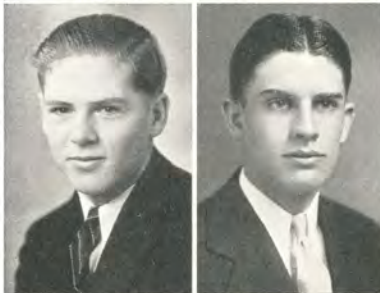


STANLEY KATKEVECK

"MICKEY"

"He that does what he can, does what he ought."

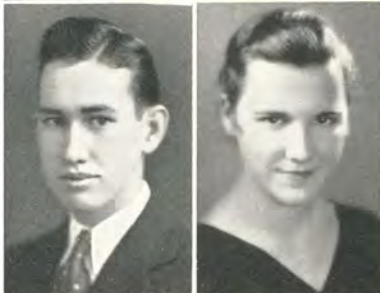
Baseball 3, 4; Inter-class Basketball 3, 4.



LINCOLN KEAN "LINK"

"Give every man thy ear, but few thy voice."

Hi-Y 3, 4.



CLIFFORD KEENEY

"CLIFF"

"Active natures are rarely melancholy. Activity and sadness are incomparable."

Honor Roll 7.



DORIS KEISH "KEISHIE"

"Good cheer is no guidance to a good life."

Honor Roll 3; Girl Reserves 4; Homeroom Basketball 1.

EVELYN KELLUM "EV"

"The sort of a girl you like to meet, anytime, and any place."

Junior Red Cross.

STEWART KENNEDY

"STEWY"

"He is a gentleman, because he is kind and affable to every creature."

Interclass Football 2; Interclass Basketball 2, 3, 4; Glee Club 3, 4; Orchestra 1, 2, 3, 4; Soccer 3, 4; Captain Soccer 4; Baseball 4; Student Council 3; Honor Roll 1; Hockey 2, 3; Torch Club 1.

MARGARET KERR "PEG"

"She has a merry glance That seldom man's heart resists."

Freshman Dramatic Club; Girl Reserves 3.

FRANCIS KNIGHT

"SLOPPY"

"I would it were bedtime, and all were well."

Torch Club 1; Band 1; Class Treasurer 1; Student Council 1; Prom Committee 3; Honor Roll 2.

ANNA KOTSCH "ANN"

"It is tranquil people who accomplish much."

Honor Student; Honor Roll 10.



ROBERT LANE "BOB"

"It is a foolish thing to make a long prologue, And to be short in the story itself."

Track Team 3, 4; Honor Roll 9.

MARGARET KOTSCH

"PEG"

"Here are blent Unstudied, sweet repose of form and force, Sympathy and uprightness."

Honor Roll 2.



FRANK LARSON "OLAF"

"A fox is not caught twice in the same snare."

Interclass Football 1, 2; Interclass Basketball 1, 2; Interclass Baseball 1.

MARJORIE KRAH

"MARGE"

"Yet she looks like a queen."

Honor Roll; Freshman-Sophomore Dramatic Club.



NORMAN LASHINSKI

"LASH"

"All succeed with people who are of a cheerful disposition."

Interclass Swimming 3, 4; Varsity Baseball 3, 4; Interclass Baseball 3; Honor Roll 21; Honor Student.

ISABEL KUPCHUNOS

"IZZY"

"Through her expressive eyes her soul distinctly spoke."

Junior Red Cross; Glee Club 1, 2; Honor Roll 3.



RUTH LEE "RUTHIE"

"One day in the country is worth one month in town."

Dramatic Club 1; Glee Club 1, 2, 3, 4.

CLARA KWASH

"SQUASHIE"

"I love to live with myself, And so I want to be fit for myself to know."

Argonaut Club 1; Honor Roll 14; Girl Reserves 4; Honor Student.



WINIFRED LEE

"WINNIE"

"Sing again with your sweet voice revealing a tone of some world far from ours."

Dramatic Club 1; Glee Club 1, 2, 3, 4; "Cast of Pirates of Penzance."

GRACE LEGG

"Not by years but by disposition is wisdom acquired."

Junior Red Cross 1; Dramatic Club 1; Girl Reserves 3, 4.



WILLIAM MACK "BILLY"

"I will have my own way in everything."

Hockey Team 1, 2, 3; Thalian Club 1; Swimming Team 1; Argonaut Club 1.

KENITH JOHN LESLIE

"KEN"

"Bluffing is an art which few accomplish."

Chorus of "Mikado"; Chorus of "Pirates of Penzance"; Chorus of "Creation"; Honor Roll 1; Interclass Soccer 1, 2; Soccer 3, 4; Interclass Swimming 2; Glee Club 1, 2, 3, 4; Orchestra 1, 2, 3, 4; Asst. Concert Master Orchestra 3.



SARAH ELIZABETH MacLACHLAN

"SAL"

"Swift to hear, slow to speak, slow to wrath."

Thread and Needle Club 1.

JAMES LEWIS "JIM"

"A merry heart maketh a cheerful countenance."

Torch Club 1; Band 3, 4; Student Council 3.



DORIS MAHONEY "DOT"

"Vanity is a natural object of temptation to a woman."

Argonaut Club 1; French Club 2, 3; Pep Club 3; Senior Photographing Committee; Honor Roll 1.

MARGARET LIELASUS

"PEGGIE"

"Speak common words with a blushful air."

Honor Roll 6; Girl Reserves 2, 4.



FRANCIS MAHONEY

"HONEY"

"'Tis a sure sign work goes on merrily, when folks sing at it."

Torch Club 1; Baseball 1, 2, 3, 4; Basketball 3, 4; Home Room Chairman 3; Interclass Running Broad, First 3; Pep Club 3; Hi-Y 3, 4.

EDITH HANNAH LIPPINCOTT "LIPPY"

"Intellect really exists in its products."

Honor Roll 13; Honor Student.



PHOEBIE W. MANNING

"PHEBE"

"Perhaps it was her thoughtful gentle way, forgetting all her own in others pain."

Junior Red Cross 1, 2; Science Club 1; Student Council 1; Glee Club 4; Honor Roll 2.

ELLIS MARTIN "ELLIE"

"The strongest make not the most noise."

Torch Club 1; Interclass Track 4; Band 2.



SUSANNA McCLUSKEY

"SUE"

"Silence is more musical than any sound."

Junior Red Cross 1; French Club 3; Girl Reserves 3; Honor Roll 6.

HERMAN MASKEL "BULL"

"Oh, for three acres and a cow."

Football 3; Honor Roll 6.



EDITH McCOMB "PAT"

*"Steadfast was her friendship,
Her word as true as gold."*

Argonaut 1; French Club 3; Girl Reserves 3, 4; Honor Roll 22; Honor Student.

JOHN MATCHETT

"The cautious seldom err."

Honor Roll 8; Freshman Dramatic Club.



KENNETH McCORMICK

"KENNEY"

"Life is not so short, but what there is always time for courtesy."

AGNES MAYER "AG"

"In every exalted joy, there mingles a sense of gratitude."

Glee Club 1; Basketball 2, 3, 4; Dramatic Club 1; Girl Reserves 3; Honor Roll 5.



ROBERT McCORMICK

"BOB"

"I came; I saw; I conquered."

Varsity Track 2, 3, 4; Track Captain 4; Football 3; Varsity Football 2; Torch Club 1; Band 4; Honor Roll 1.

JOHN McCARTHY

"JOHNNIE"

*"Ambition caused Caesar's downfall,
So I shall live on forever."*



JOHN McGANN "JOHNNIE"

"He makes a friend who never makes a foe."

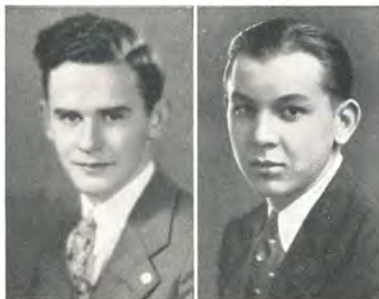
Torch Club 1; Latin Club 1; Argonaut Club 1.

HAROLD McINTOSH

"SCOTTIE"

"Six hours for work! Indeed,
that is enough to give
To labor—let the rest
Show forth the motto,
Live?"

Neaphite Sodality 1; Foot-
ball 1, 2; Baseball 1; Basket-
ball 1; Swimming 1; Hi-Y
3, 4.

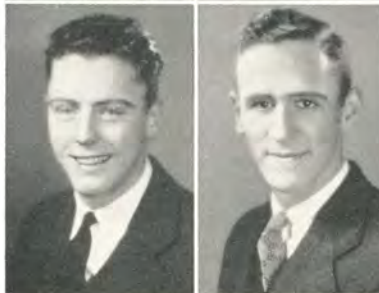


WADSWORTH KENITH

McKINNEY "RED"

"In general those who noth-
ing have to say,
Contrive to spend the longest
time in doing it."

Glee Club 4; Sock and
Buskin 4; Debating Club 4;
Honor Roll 1.

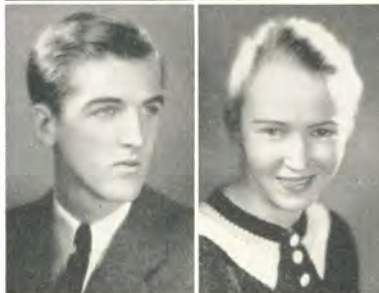


THOMAS McPARTLAND

"TOM"

"Love is so different with
us men."

Torch Club 1; Inter-class
Football and Basketball 1;
Student Council 2; Basket-
ball 2, 3, 4; Varsity 4; Presi-
dent of Junior Class 3;
Chairman Prom Committee 3;
Class Ring Committee 3;
Junior Response on Class
Day.



MARY MARGARET

McVEIGH "MAMIE"

"She is diffident, modest,
and shy."

Girl Reserves 4.



MILDRED MEYER

"MILLIE"

"Of manners gentle, of
affections mild."

Life Saving Class 3, 4.



FRANK MICKEWICZ

"MICKEY"

"Modesty becomes a young
man."

Honor Roll 4.

FRED MILDREN "FRED"

"Assurance is two-thirds of
success."

Sock and Buskin 3, 4;
Cast of "Bab"; Cast of
"Reach for the Moon"; Foot-
ball 4; Honor Roll 1.

ETHEL DOROTHEA

MODIN "DOTTIE"

"Let ignorance talk as it
will, learning has its
value."

Freshman Dramatic Club;
Debating Club 1, 2; Honor
Roll 13.

DORIS C. MOHR "DOT"

"The heart to conceive, the
understanding to direct, the
hand to execute."

Would-Be-Players 1; Debat-
ing Club 1, 2; Sock and
Buskin 4; Junior Prom Com-
mittee; Somanhis Staff 4;
Honor Student; Honor Roll
16.

HERMAN MONTIE

"HERM"

"What's the use of worry-
ing."

Torch Club 1.

LILLIAN MOORHOUSE

"BETTY"

"Her stature's tall—
I hate a dumpy creature."

Life Saving Class 3, 4;
First Team Basketball, Blue
4; Glee Club 4; Debating
Club and Team 4; Honor
Roll 6.



ROBERT FINLEY NEILL

"KNOCKER"

"Little said is soonest
mended."

Baseball 1; Track 1.

EDWARD MORIARTY

"FLIP"

"I do loathe explanations."

Interclass Basketball 2, 3;
Hi-Y 4; Torch Club 1.



ERNEST NEILL "BUTCH"

"I want what I want when
I want it."

Treasurer of Freshman
Class 1; Basketball 1, 2, 3,
4; Captain Basketball 4;
Student Council 1; Football
1, 2, 3; Hockey 1; Baseball
1; Honor Roll 1; Torch Club
1.

FRANCIS MORIARTY

"RED"

"Wisely and slow; they
stumble that run fast."

Home Room Chairman 1;
Torch Club 1; Honor Roll 2.



RICHARD NICHOLS

"DICK"

"Hear no ill of a friend, nor
speak of an enemy."

Glee Club 1, 2; Soccer 5;
Honor Roll 1.

PENELOPE MORRIS

"PENNY"

"With eyes dark as night
Yet than noonday more
bright"

Were black eyes ever so
keep."

Thread and Needle Club 1;
Red Cross 1; Glee Club 2,
4; Girl Reserves 3, 4.



ELEANOR NICKERSON

"NICK"

"Still her tongue ran on
The less of weight it bore
with greater ease."

Argonaut Club 1; Basket-
ball 1, 2; Glee Club 1, 2;
Glee Club Librarian 2; French
Club 2; Hockey Team 3;
Somanhis Staff 4; Orchestra
1, 2, 3, 4; Honor Roll 21;
Honor Student.

ALICE NEIL

"AL"

"Thy modesty's candle to thy
merit."

Glee Club 1, 4; Thread
and Needle Club 1.



FRANK SHERWOOD NYMAN

"FJATT"

"If you are in doubt, act
as if you knew."

Glee Club 1, 4; Honor
Roll 1.

ANTHONY O'BRIGHT

"TOXY"

"Music is the universal language of mankind."

Band 1, 2, 3, 4; Cheer Leader 4; Orchestra 3, 4; Glee Club 4; Junior Prom Committee 3; Glee Club Party Committee 4; Inter-class Football Team 2.



IRENE POLA "RENIE"

"Wisdom is like the best wear in the peddler's pack Which he never produces till he knows his customer."

Home Room Basketball 1; Thread and Needle Club 1; Glee Club 1, 2, 3, 4; Sock and Buskin 3, 4; Girl Reserves 4; Cast of "Mikado" Cast of "Pirates of Penzance" Chorus of "Creation"; Honor Roll 19; Honor Student.

TEOFILO OFIARO

"TUFFY"

"A home girl art thou."

Thread and Needle Club 1; Girl Reserves 4; Honor Roll 2.



MILDRED PRENTICE

"MILLY"

"It is through art and through

art only that we can realize our perfection."

Art Editor Somanhis 4; Thread and Needle Club 1; Home Room Basketball 1, 2, 3; Glee Club 1; Honor Roll 7.

THEODORE SEYMOUR OWERS

"TED"

"Slumber is more sweet than toil."

Class Photo Committee 4; Hi-Y Club 2, 3, 4; Football 2, 3, 4; Baseball 2; Track 4.



ELIZABETH QUIMBY

"BETTY"

"Sparkling with eloquence and capability."

Argonaut Club 1; Student Council 1; Girl's Basketball 1; Debating Club 2, 3, 4; Triangular Debate 2, 3, 4; Vice-President Debating Club 4; Somanhis Staff 3, 4; Sock and Buskin 3, 4; Cast of "Torch Bearers" 4; M. H. S. Herald Reporter 3, 4; Honor Roll 4.

RUTH EVELYN PETERSON

"She hath a natural, wise sincerity, a simple truthfulness."

Junior Red Cross 1; Glee Club 1; Girl Reserves 3, 4; Treasurer Girl Reserves 4; Honor Roll 6.



ANDREW RAGUSKUS

"ANDY"

"Moderation, the noblest gift of Heaven."

Glee Club 1, 2, 3; Baseball 3, 4; Torch Club 1; Honor Roll 6.

ELIZABETH PIERCE

"BETTY"

"They're only truly great who are truly good."

Honor Roll 3.



LOUIS REALE "CHIC"

"Men are not angles; neither are they brutes."

Torch Club 1; Track 1, 2, 3; Glee Club 4.

ANNA RENN "ANN"

*"There is luxury I have
In which enjoyment never
ends;*

*'Tis hoarding every thought
and hour*

Spent with my friends."

Basketball Team 1, 2.



MERRILL B. RUBINOW

"PEP"

"Nay, I shall have my say."

Student Council 1, 3; Debating Club 2, 3, 4; Triangular Debate 2, 3; Somanhis Staff 3, 4; Circulation Manager 4; Assistant Manager Basketball 3, and Manager 4; Hi-Y 3, 4; Sock and Buskin 3, 4; Argonaut Club 1; Class Photo Committee 4; Honor Roll 20; Honor Student.

JENNIE REYMANDER

"JEN"

*"The unspoken word never
does harm."*

Thread and Needle Club 1; Hockey Team 1, 2, 3, 4; Home Room Basketball 1, 2, 3; Honor Roll 4.



CAROLINE RUDINSKY

"CAROL"

*"Where all was harmony and
calm, and quiet."*

Thread and Needle Club 1; Somanhis Typist 4; Honor Roll 3; Honor Student.

ELEANOR ROBERTSON

"TOOTS"

*"To her young heart every-
thing is fun."*

Sock and Buskin 4; Leader's Class 2, 3; Cast of "Reaching for the Moon" Argonaut Club 1; Pep Club 3.



JOHN RUKUS

"CY"

*"Speech is great, but silence
is greater."*

Honor Roll 7; Freshman Dramatic Club.

ADA ROBINSON

*"My heart is wide on either
side*

As I myself shall make it."

Orchestra 1, 2, 3, 4; Glee Club 1, 2; Librarian for Orchestra 1, 2.



NORMAN RYLANDER

*"I recommend to take care of
the minutes, for the hours
will take care of them-
selves."*

KENNETH GOODRICH
ROGERS

*"The rule of my life is to
make business a pleasure
and pleasure my business."*

Science Club 1; Torch Club 1; Glee Club 2.



IRENE SANDHOLM

"RENE"

*"Strongest minds are often
those of whom the noisy
world hears least."*

Girl Reserves 4; Thread and Needle 1; Red Cross 1.

JOSEPH SARTOR "JOE"

"Discretion is the better part of valor."

Basketball 1, 2, 3, 4; Interclass Baseball 1, 2; Science Club 1; Honor Roll 16; Honor Student.



ARTHUR MILTON SHORTS

"SHORTY"

"Care to our coffin adds a nail, no doubt. And every grin, so merry, draws one out."

Interclass Track 1, 2; Argonaut Club 1; Torch Club 1; Glee Club 2, 3; Cast of "Pirates of Penzance"; Sock and Buskin 4; Hi-Y 3, 4; Honor Roll 1.

JOHN SCARCHUK

"OSCAR"

"Blessed is the man who having nothing to say abstains from giving us worthy evidence of the fact."

Torch Club 1; Football 1, 2.



ANNA SMACHETTI "ANN"

"What? I afraid. Well, I guess not."

Basketball Team 1; Junior Red Cross 1.

JOSEPH JOHN SCHOEN

"Man is the strongest when he feels alone."



GEORGE CLIFFORD SMITH

"CLIFF"

"Better a little well kept than a great deal forgotten."

Football Squad 2, 3; Track Squad 1.

HAROLD SCHUETZ "HAL"

"Faith, that's as well said as if I had said it myself."

Interclass Basketball 2, 3; Interclass Baseball 3; Thalien Club 1; Glee Club 1, 2; Honor Roll 12.



SYLVIA SMITH "SYL"

"Doing well her daily tasks, Never fickle praising asks."

Glee Club 4; Junior Red Cross 1; Somanhis Typist 4.

ARTHUR EDMUND SCRANTON "ART"

"What the heart thinks, the tongue speaks."

Torch Club 1; Glee Club 1, 2, 3, 4; Track Squad 1.



EDWARD GEORGE STAUM

"EDDIE"

"Young fellows will be young fellows."

Intreclass Track 1, 2, 3; Interclass Football 1; Torch Club 1; Glee Club 1.

WINSTON ROBERT SMITH

"WINNIE"

"A mighty spirit fills that little frame."

Torch Club 1; Glee Club 1; Assistant Manager, Baseball 3; Interclass Track 1, 2; Honor Roll 7.



MARGARET STIPSITS

"PEGGY"

"A little thing comforts us Because a little thing afflicts us."

Girl Reserves 2, 3, 4; Thread and Needle 1; Glee Club 1.

PAULINE STECHOLZ

"PAULINE"

"We can do nothing well without joy and a good conscience — Which is the ground of joy."

Thread and Needle Club 1; Junior Red Cross 1; Hockey 2; Glee Club 4; Somanhis Typist 4.



ELIZABETH STRONG

"BETTY"

"In character, in manners, in style, in all things the supreme excellence is simplicity."

Honor Roll 12; Girl Reserves 2, 3, 4; Secretary Girl Reserves 2.

RUSSELL STEVENSON

"RUSS"

"Never a tear bedims the eye That time and patience will not dry."

Honor Roll 1; Torch Club 1; Orchestra 1, 2; Interclass Basketball 2, 3, 4; Interclass Baseball 3.



JOHN WILLIAM STURGEON

"PUTTS"

"Since brevity is the soul of wit, I will be brief."

Tennis Team 2, 3, 4; Basketball 2; Torch Club 1.

SAM STEVENSON "RED"

"We are growing serious, and let me tell you, That's the very next step to being dull."

Interclass Baseball 1, 2.



JOHN SULLIVAN "SULLY"

"Whence that three-cornered smile of bliss,"

Honor Roll 5; Manager of Baseball 4; Interclass Baseball 1, 2, 3; Interclass Football 1; Argonaut Club 1; Torch Club 1; Glee Club 1, 2, 3; Orchestra 1, 2, 3; Cast of "Mikado" 2; "Torch Bearers" 4; Sock and Buskin 3, 4.

HALLETT H. STILES

"HAL"

"You have courage, manners, conversation, and a sense of humor."

Sock and Buskin 3, 4; Glee Club 4; Hi-Y 4; Manager of Soccer 4; Cast of "Bab" 3; "Torch Bearers" 4; "Reach for the Moon" 4.



MILDRED SUTHERLAND

"MILLIE"

"It is the mind that makes woman, and our vigor is in our immortal soul."

Argonaut Club 1; Orchestra 2, 3; Accompanist Glee Clubs 2, 3, 4; Sock and Buskin 3, 4; Accompanist "Pirates of Penzance" 3; Accompanist of Haydn's Oratorio "Creation" 4; Somanhis Staff 4; Tennis 3; Honor Roll 22; Honor Student.

JOHANNA TAMOSAITIS

"JO"

"Silence is deep as Eternity
Speech as shallow as time."

Honor Roll 6; Needle Club
1; Girl Reserves 2, 3, 4.



ANNE TIDMAS "DINK"

"She knows what is what."

Girls Glee Club 1, 3, 4;
Girl Reserves 4; Thread and
Needle Club 1; Junior Red
Cross 1; Somanhis Typist 4;
Honor Roll 2.

HAROLD TEDFORD

"TEDDY"

"I cannot tell how the truth
may be; I say the tale as
'twas told to me."

Honor Roll 6; Varsity
Basketball 4; Argonaut Club
1; Student Council 3.



WELLS TOLSON "CURLEY"

"Blessed be the man who
first invented sleep,
It covers a man all over like
a cloak."

Thalien Dramatic Club 1;
Honor Roll 3.

ERNEST THOMPSON

"ERNIE"

"Every one should speak
little but do much."

Honor Roll 6.



JAMES TOMAN "LEAP"

"Give me a lever long enough
and a prop strong enough,
and I can single-handed
move the world."

Argonaut Club 1; Glee
Club 1, 2, 3, 4; Debating
Club 2, 3, 4; Triangular De-
bating Team 3, 4; President
Debating Club 4; French Club
3; Sock and Buskin Club 3,
4; Cast of "Torch Bearers"
4; Cast of "Mikado" 2; Stu-
dent Council 4; Harvard
Book Prize 4; Somanhis Staff
2, 3, 4; Editor-in-Chief So-
manhis 4; Track 1, 2, 3, 4;
Cross Country 3, 4; Manager
Cross Country 4; Honor Roll
22; Honor Student; Saluta-
torian.

MAE THOMPSON

"A little nonsense now and
then
Is relished by the wisest
men."



CLIFFORD TREAT "TIP"

"No profit grows where is no
pleasure taken."

Swimming 1, 2, 3, 4; Foot-
ball 3, 4; Track Team 3; Man-
of Track Team 4; Argonaut
Club 1; Torch Club 1; Glee
Club 4; President of Class 1;
Student Council 1, 2; Hi-Y
Club 2, 3, 4; Pep Club 3.

EDITH THRASHER "EDIE"

"In arguing too, she showed
her skill.
For e'en that vanquished she
could argue still."

Girls Glee Club 1, 3, 4;
Girl Reserves 4; Thread and
Needle Club 1; Argonaut
Club 1; Girl's Varsity
Hockey 2; Honor Roll 14.



ELIZABETH TRIGGS

"BETTY"

"Cheerful company shortens
the miles."

Junior Life Saving 3;
French Club 3; Senior Life
Saving 4; Honor Roll 1.

DOLORES TROTTER

"Earnestness alone makes life and eternity."

Argonaut Club 1; Girl Reserves 2, 3; French Club 3; Honor Roll 22; Honor Student.



HELEN WALKER

"Her air, her manners, all who saw, admired. Courteous tho coy, and gentle tho retired."

Basketball 1, 2, 3, 4; Glee Club 4; Red Cross Club 1.

HENRY TUREK "TURK"

"The force of necessity is irresistible."

Honor Roll 4.



BETTY WALWORTH

"The force of her own mind makes her way a gift that heaven gives for her."

Freshman Dramatic Club 1; Red Cross 1; Sock and Buskin 3, 4; Cast of "Reach for the Moon"; Junior Prom Committee; Class Party Committee 3; Vice-President, Sock and Buskin 4; Honor Roll 11; Honor Student.

ALFRED VENNARD "AL"

"The hope of pleasure is as good as pleasure itself."

Interclass soccer 2, 3; Interclass Swimming 1, 2, 3, 4; Torch Club 1; Glee Club 4.



OLGA WEBER

"Easy, obliging, not much speed."

"Her's is a cheerful, kindly creed."

Girl Reserves 3, 4; Basketball 3, 4; Tennis 3; Baseball 3.

IRENE VILLA

"Beneath this inassuming exterior are concealed wit and a world of jollity."

Basketball 4; Girl Reserves 2; Sewing Club 1.



ELEANOR WERNER "EL"

"Simple in thy elegance; Plain in thy neatness."

Basketball Team; Honor Roll 5.

ETHEL WALKER

"Gentle in personage, conduct and equipage."

"Noble by heritage, generous and free."

Basketball 1, 2, 3, 4; Glee Club 4; Red Cross Club 1.



LENA MARGUERITE WILEY

"A light-heart lives long."

Basketball 3, 4, 5; Tumbling Team 1, 4; Life Saving Class; Dramatic Club 1; Honor Roll 6.

JAMES A. WILLIAMS

"JIMMIE"

"There is great ability in knowing how to conceal one's ability."

Honor Roll 3.



DOROTHY WIRTALLA

"DOT"

"I have no fear; what is in store for me, shall find me ready for it, undismayed."

Basketball 1; Sock and Buskin 3, 4; Cast of "Torch-Bearers"; Argonaut Club 1; Pep Club 3; Cheer Leader 1, 2, 3, 4; Baseball 3; Tumbling Team 4.

JEAN WILLIAMS

"Pleasure and action make the hours seem short."

Hockey 3; Tennis 3; Argonaut Club 1; Student Council 1; Assistant Business Mgr. Somanhis.



WALTER WRIGHT

"WALT"

"He briskly and cheerfully asked how a man should kill time."

Argonaut Club 1; Glee Club 1, 2, 3; Sock and Buskin 4; Hi-Y 3, 4; Class Treasurer 2; Cast "Torch Bearers."

ELEANOR WILSON "EL"

"Great thoughts, like great deeds, need no trumpet."

Basketball 1, 2, 3, 4; Baseball 3; Honor Roll 3.



MARIAN FRANCES YERKS

"MARY ANN"

"I do not know, perhaps it was her smile that brightened all her face and flashing eyes. I only know that I felt a glad surprise, that joy and I could dwell with her awhile."

Brattleboro High School 1, 2, 3; Girls Field Hockey 1, 2, 3; Girls Basketball Squad 2, 3; Girls Track Squad 2, 3; Gym Exhibition 1, 2, 3; Big Sister Club 3; Glee Club 2; Manchester High School 4.

GLADYS WILSON "GLAD"

"Each mind has its own method."

Glee Club 1, 2, 3, 4; Secretary Glee Club 3; Cast of "Mikado"; Cast of "Pirates of Penzance."



ALEXANDRIA HARABURDA

"Be good, sweet maid and let who will be clever."

Girl Reserves 3, 4; Glee Club 4.

GEORGE E. WILSON

"HACK"

"Wink at small faults, remember you have greater ones."

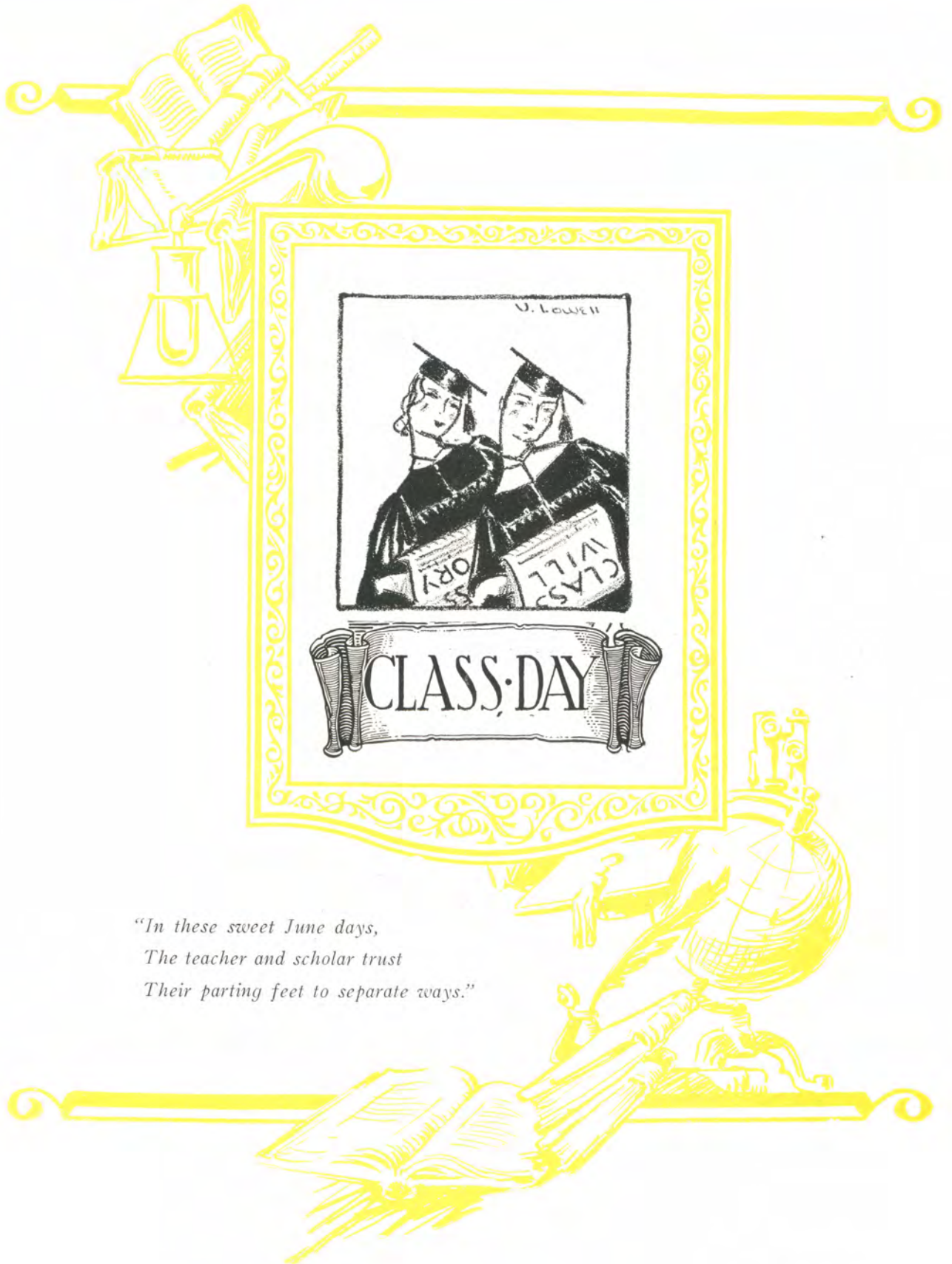
Honor Roll 2.

Who's Who In 1933

Best all-round girl	Barbara Hyde	Done most for school	James Toman
Best all-round boy	Carl Hultine	Best girl debater	Betty Quimby
Best girl dancer	Jessie Bellamy	Best boy debater	Merrill Rubinow
Best boy dancer	Frederick England	Wittiest girl	Jean Williams
Most personality girl	Barbara Hyde	Wittiest boy	Anthony O'Bright
Most personality boy	Victor Davies	Mist likely to succeed girl	Lucy Barrera
Best dressed girl	Bernice Campbell	Most likely to succeed boy	James Toman
Best dressed boy	Stuart Joslin	Vainest girl	Lillian Carney
Most musical girl	Mildred Sutherland	Vainest boy	Stuart Joslin
Most musical boy	Anthony O'Bright	Class vamp	Phyllis Fallow
Most talkative girl	Glenna Denton	Class sheik	Frederick Bieber
Most talkative boy	Merrill Rubinow	Most studious girl	Lucy Barrera
Best mannered girl	Anna Gill	Most studious boy	James Toman
Best mannered boy	Stuart Joslin	Best girl arguer	Sadie Copeland
Best looking girl	Doris Mahoney	Best boy arguer	Merrill Rubinow
Best looking boy	Stuart Joslin	Class procrastinator	James Britton
Most drag girl	Doris Mohr	Cutest girl	Jessie Bellamy
Most drag boy	Hallet Stiles	Cutest boy	Francis N. Della Fera
Class couples		Most popular girl	Barbara Hyde
Eleanor Robertson—Clifford Treat		Most popular boy	Carl Hultine
Jessie Bellamy—Thomas McPartland		Most artistic girl	Mildred Prentice
Miriam Jones—Robert McCormack		Most artistic boy	James Britton
Adelia Cullen—Welles Tolson		Most athletic girl	Doris Cervini
Best actress	Alice Atiken	Most athletic boy	Carl Hultine
Best actor	Victor Davies	Class Baby	Betty Walworth
Done school most	Merrill Rubinow	Class woman hater	John Brannick
Class snob	Lillian Carney	Class man hater	Anna Kotsch



SENIOR CLASS



*"In these sweet June days,
The teacher and scholar trust
Their parting feet to separate ways."*

HISTORIC MILESTONES

Commencement—and another chapter of our life's history comes to a close. It is but the end of the beginning, for new and broader fields of life are opening before us with all their potential experiences. But fond memories of the Past linger on, so herein let us make a brief retrospection and count back on the milestones that we erected on our highway of knowledge.

We might, after the manner of the ancients, relate in chronological order what we consider important events. Then would we have to admit at the outset that in one sense, at least, the heavens did not smile upon us, for did we not enter the portals of Manchester High School in the memorable year of 1929? And has not Prosperity been "just around the corner" ever since?

But let us not follow the method of the historian of antiquity because though we have had to sacrifice much, including the coveted trip to Washington, we do not emphasize even in thought the discomforts we have endured. We have gone forward in spite of obstacles with heads high and hopes strong. Perhaps our sacrifices have only added to our power, for we have gained a deeper appreciation of the real values of life and a keener understanding of our own responsibilities of the future.

We might portray our history by a photographic revue of 1933's Past: embarrassing moments of our freshman year when, as awkward striplings we blundered into the wrong classrooms; our first masquerade party with Mr. Bailey's "Sparkplug" in attendance; changes in fashion of dress and coiffure effected by both sexes; glimpses of Irene Pola and Gladys Wilson in "The Mikado;" Winifred Lee in the "Pirates of Penzance;" Thomas McPartland and Jessie Bellamy leading the Grand March at the Junior Prom; our staunch debaters, Lillian Carney, Betty Quimby, Betty Moorhouse, James Britton, Merrill Rubinow, Stuart Joslin and James Toman; Doris Mohr with the poster which won the Vanco Poster Prize; our stalwart athletes in some of their memorable games and races,—Dana Cowles, Clifford Treat and Stuart Joslin making and breaking swimming records, Robert McCormick breaking the State record in pole-vaulting; Stanley Katkaveck standing behind the home plate; the various fads that have beset the school from gum chewing and roller skating to lolly-pops (may we say that as a class we have refrained from supporting this last atrocity); Betty Walworth-Alice Aitkin, Victor Davies, Walter Wright, Betty Quimby leading a long line of dramatic stars. But though this kaleidoscopic treatment might afford us many happy memories and in some cases much amusement, there is danger of tedium to others. And so, ever hopeful that our ambition, hope, deeds and even failures may serve as inspiration not only to us in our future life but also to our schoolmates who will take our places, let us simply record a few of our achievements indicating the progress we made as we went about our activities in M. H. S.

Under the leadership of our class presidents, Clifford Treat, Frank Simon, Thomas McPartland, and Elmore Hultine, we have been inspired into greater activity, and the fruits of our toil may be seen through our social, athletic, and intellectual achievements.

Socially, our fraternal relations have been broadened and strengthened by such functions as our class parties, Junior Promenade, Hare and Hound chases, and by our participation in various clubs, such as the Girl Reserves and Hi-Y Club.

Our athletic prowess has been demonstrated by the success of our athletic teams, which have been inspired into greater agility of mind and body by the splendid leadership of the team captains: Elmore Hultine, Ernest Neill, Dana Cowles, Robert McCormick, Francis Mahoney, and Stewart Kennedy. Undaunted by keen competition, they have invaded the realms of rival sportsmen, and in victory and in defeat alike their fine spirit has placed high the prestige of the Red and White. Intra-mural sports have been developed through the Blue and White teams for girls and in other branches of athletics. The athlete's real achievement lies not in the mere glories of the field, but in the development of true sportsmanship, the final test of the man.

Finding that "knowledge is that which, next to virtue, truly and essentially raises one man above another," and, inspired by the fine scholastic record of our valedictorian, Lucy Barrera, and salutatorian, James Toman, we have yearly augmented our honor roll. Journalism has thrived under the facilities afforded by "*Somanhis*", and our ability at logic and public speaking has been trained by debating practice. Realizing that the cultivation of the arts is essential for the broadening of the intellect, we have made creditable dramatic performances through the Sock and Buskin Club. The art of music has been developed by the fine programs given by the orchestra and band, and the yearly presentations of light opera by the Glee Clubs have been enthusiastically received.

Many are the individual attainments that have won awards and prizes and among them we find the essay on "Science" by Phoebe Manning, the essay on "Prohibition" by Sadie Copeland, the essay on "George Washington" by Stuart Joslin. Betty Quimby started her career as a public speaker by winning the Freshman Public Speaking Contest and she has recently been awarded the W. C. T. U. National Grand Diamond Medal. No history of our class would be complete without a eulogy for James Toman, whose intellectual faculties have won, and will win, for him the esteem of his fellowmen. Among his prizes we must number those for his essays on "Fire Prevention," on "Safety" and on "Prohibition;" the Harvard Book Prize, and the National Poetry Award for the State.

Our deeds are now a part of history but they are only an example of what we can do and will do in the future, when we will be inspired and encouraged by the noble spirit of our class motto, "*They can who think they can.*"

1932

SEPT.
BACK IN JAIL



MHS

1933

OCT.



CROSS COUNTRY

NOV.
FOOTBALL



DEC.



SENIOR PARTY

JAN.



BASKETBALL

FEB.

THE OPATORIO



MARCH



THE DEBATE

APRIL

"REACH FOR THE MOON"



MAY

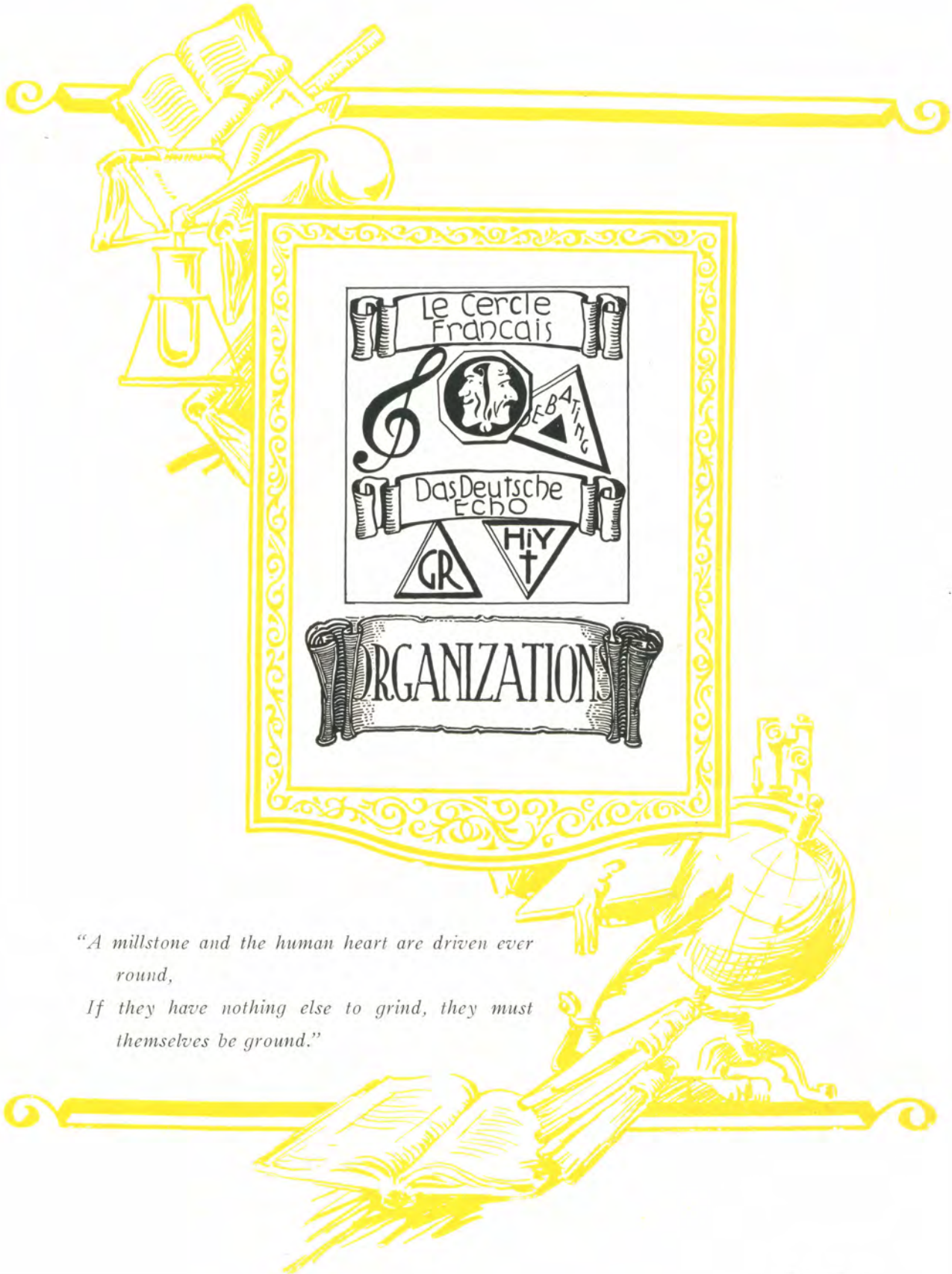


BASEBALL

JUNE



SO LONG!



Le Cercle
Francais

Das Deutsche
Echo

GR

HIY

ORGANIZATION

*"A millstone and the human heart are driven ever
round,
If they have nothing else to grind, they must
themselves be ground."*

"They were a group of students who wrote with ease."



SOMANHIS STAFF
Left to Right

First Row: Mr. Wright, Joslin, DeVito, Toman, Miss Walsh.
Second Row: Mohr, Huebner, Harvey, Andrews, Carney.
Third Row: Prentice, Barrera, Sutherland, Quimby, Hyde, Williams, Nickerson, Rubinow.
Fourth Row: Fitzgerald, Freeman, Clough, Enrico, Fallon, Davies, Heck.

SOMANHIS

This year "Somanhis" won second prize in the Columbia National Contest of School Publications for schools of 800-1500 students. Four issues of "Somanhis" were published: "The Campaign Number," "2033 A. D.," "Somanhis Broadcasts" and the Year Book.

STAFF
EDITORIAL

Editor-in-Chief—James Toman, '33
Assistant Editors—Stuart Joslin, '33; Florence DeVito, '34
Literary Editors—Sports Editors—Geno Enrico, '33
Lucy Barrera, '33; Lillian Carney, '33 Eleanor Huebner, '33
*News Editor—Betty Quimby, '33 Jokes Editor—Victor Davies, '33
Art Editor—Mildred Prentice, '33
Exchange Editor—Betty Harvey, '35

BUSINESS

Business Manager—Herman Heck, '33
Assistant Business Managers
Maynard Clough, '33; John Fitzgerald, '33; Edward Macauley, '33; Arthur Fallon, '33;
Charles Freeman, '33; Matthew Naczowski, '34; Frank Healy, '34
Advertising Manager—Doris Mohr, '33
Circulating Managers—Merrill Rubinow, '33; Jean Williams, '33
*News Editor—"Manchester Herald" Column

TYPISTS

Caroline Rudinsky, '33 Pauline Stechholz, '33
Sylvia Smith, '33 Ann Tidmas, '33
Dorothy Dewey, '33 Evelyn Fish, '33

FACULTY ADVISERS

Faculty Adviser—Miss Avis C. Walsh
Art—Miss Harriet C. Condon
Business—Mr. R. Wright

"Much might be said on both sides."



DEBATING TEAM

Left to Right

First Row: Quimby, Carney, Moorhouse.

Second Row: Mr. Quimby, Britton, Joslin, Toman, Bieber, Howroyd.

DEBATING TEAM

The Manchester High School team took part in only one debate this year, the Triangular debate, held on March 24. The question for discussion was: "Resolved: that the president of the United States should be elected by direct vote of the people." The affirmative team, composed of James Britton, Betty Moorehouse, James Toman, and Fred Bieber, alternate, successfully defended its case against Middletown, winning by a score of 3-0. The negative team Betty Quimby, Stuart Joslin, Lillian Carney and Harry Howroyd alternate, met defeat at the hands of a strong Meriden team by a score of 3-0. Each of the three teams now has two legs on the triangular league trophy, and next year's victor will win permanent possession of the cup.

The officers of the club are:

PresidentJames Toman

Vice-PresidentBetty Quimby

Secretary and TreasurerWadsworth McKinney

Principal C. P. Quimby has acted very capably as coach of the team.

"The play's the thing."



SOCK AND BUSKIN

Front Row : Walworth, Joslin, Miss Estes, Quinn, Davies.

Second Row : Peterson, Driggs, Stephens, Fraser, Wallace, Andrulot, Hayes, Quimby, Mohr, Wirtilla, Donohue.

Third Row : Wright, Shortis, Aitken, Pola, Sutherland, Andrews, Hyde, Carney, Robertson.

Fourth Row : Stiles, McKinney, Braithewaite, Robinson, Toman, Sullivan, French, Clarke; Sweeney, Bieber, Mildren, Britton, Rubinow.

SOCK AND BUSKIN

The season of 1932 and 1933 for the Sock and Buskin Dramatic Club has been very successful.

The purpose of the Club is to further the development of the dramatic art in all its phases which includes: stage-direction, stage-setting, make-up, as well as acting itself.

Two three-act plays were presented during the year, "The Torch Bearers" and "Reach for the Moon." Both were successful due to the capable direction of Miss Helen Estes.

OFFICERS

President	Stuart Joslin
Vice-President	Betty Walworth
Treasurer	Victor Davies
Secretary	Bessie Quinn

"To hold, as 'twere, the mirror up to life."



SOPHOMORE, FRESHMAN—DRAMATIC CLUB

- First Row: Ofiara, Irwin, Harvey, Wengrovius, Winzler, Miss Page, Mitchell, Carpenter.
 Second Row: McCove, Peterson, Scranton, Quish, Miller, Quash, Wilson, Owers, Klinkhammer, Woodruff, Bellamy.
 Third Row: Mahoney, Foley, Pillsbury, Andrews, Shipiri, Pretrowski, Greenway, Fike.
 Fourth Row: Packard, Dannaher, Weir, Dexter, Nelson, Gess, Wells, Pond, Hansen, Braithwaite, Muldoon, McIntosh.

SOPHOMORE—FRESHMAN DRAMATIC CLUB

Under the leadership of its able president, Richard Carpenter, the club has had a successful year with three major productions: The Christmas Pageant, "Why the Chimes Rang;" "The Lady of Pain;" and two sketches, one taken from Tarkington's play "Station YYYYY" the other from "The Florist Shop."

The club has tried to develop a better understanding of all life through the study of dramatics in its different phases and as playgoers to exercise discrimination in forming literary judgments.

OFFICERS

- PresidentRichard Carpenter
 Vice-PresidentMarjorie Mitchell
 TreasurerJohn Wengrovius
 SecretaryKatherine Winzler
 Dramatic CoachMiss Helen Page

"To find and give the best."



GIRL RESERVES

Left to Right

- Front Row: Misses Legg, Hyde, Barrera, Peterson, Aitkin, Kwash, Stoltenfeldt, Weber.
 Second Row: Misses Denton, Gill, Hunter, Haraburda, Jacquemin, Pola, Sandholm, Stipsits, Tamosaitis, Ofiara, Kelly, Mohr, Toth, Casey.
 Third Row: Misses McComb, Hilbig, Horiath, Keish, McVeigh, Hall, Carter, Smyth, Akrigg, Beaupre.
 Fourth Row: Ruth Benske, Copeland, Sandholm, McNeill, Dolan, Montie, Strong, Adamson, Little, Piper, Apel, Watson, Tidmas, Cary, Richmond, Greene.

GIRL RESERVES

At the Recognition Service of the Girl Reserves, forty-four new members were added to the Club. Committee chairmen for the year were: Social Service, Barbara Hyde; Membership, Olga Kwash; Music, Barbara Stoltenfeldt; Sports, Olga Weber; Games, Clara Kwash; Program, Grace Legg; Publicity, Lucy Barrera. The faculty leaders were Miss Richmond and Miss Casey.

At Christmas the club held a Christmas party for the poor children of the town. In May, clothes were sent to the poor in the mining districts of West Virginia.

During the year the club had several interesting speakers. Miss Yoki Noito of Kyoto, Japan, spoke on the life and customs of the Japanese. Mrs. Gage of Somers spoke on "Charm and Personality."

The club entertained the Girls' Club of the Y. M. C. A. of North Manchester at one of its meetings, and the alumnae members at another.

This year's delegates to the Conference at West Hartford were Ruth Petersen, Jane Carey, Grace Legg, Marion Price, Mildred Hall, Marcella Kelly, Olga Kwash, Wilhelmina Ofiara, and Sadie Copeland.

Officers for the year 1932-1933 were:

President	Alice Aitken
Vice-President	Olga Kwash
Secretary	Doris Johnson
Treasurer	Ruth Peterson

"Music hath charms"



ORCHESTRA AND BAND

First Row: Warren, Fradin, Robinson, Brown, Marsh.
Bantly, McLoughlin, Kosinsky, Tivnan,
Braithwaite, Leggett, Nickerson, Viertel, Cashion, Little, O'Bright, Gyrk, Kennedy, Kluck,
Beebe.
Shields, Krause, Hudson, Wray, Brown, Pond, Leslie, Clalow.
Antonio, Mr. Turkington, Brown, Gorens, Treritt, Clough, Fallon.

ORCHESTRA

The orchestra has completed a very successful year under the competent leadership of its new conductor, Harold Turkington.

Besides playing for every school assembly, the orchestra has performed for many plays, among which were the plays given by the Community Players at Whiton Memorial Hall; "The Torch-Bearers" and "Reach for the Moon," the two plays presented by *Sock and Buskin*. Besides these, the orchestra played for the Annual Triangular Debate and accompanied the Glee Clubs in their presentation of Haydn's oratorio, "The Creation."

On June 5 the orchestra rendered a concert in High School Hall. Several artists assisted during the program. Several familiar, classical numbers were included, among which were: Sibelius' "Finlandia," Rachmaninoff's "Prelude in C Sharp Minor," Tschaiakowsky's "Flower Waltz," and "Beethoven's "Turkish March."

The following have been members of the orchestra for four years and will leave by graduation: Tony O'Bright, Kenith Leslie, Stewart Kennedy, James Antonio, Ada Robinson, and Eleanor Nickerson.

THE BAND

The Manchester High School Band, consisting of O'Bright, assistant director, Krause, Warren, Braithwaite, Shedd, Antonio, Brown, Rylander, Shields, Hudson, Clough, Amadeo, and Gorens, has enjoyed a satisfactory season under the leadership of Harold Turkington, director for the last seven years.

The Band has played for most of the football and basketball games, and the inspiring martial music should receive part of credit for our athletic victories.

When Duty whispers low, "Thou must,"



COMBINED GLEE CLUBS

GLEE CLUBS

The outstanding musical event of the year 1932-1933 was the presentation of Haydn's oratorio "The Creation," an undertaking never before attempted in the history of the school. The combined glee clubs sang the difficult choruses of this work with great success. The entire production reflected much credit on Mr. G. Albert Pearson, who is the new musical director.

Both glee clubs did well in the C. C. I. L. contest, which was held in Middletown this year.

The officers of the Girls' Glee Club were: Jessie Hutchinson, president; Eleanor Huebner, vice-president; Blenda Johnson, treasurer; Eleanor Hobby, secretary; Olga Kwash and Marcella Kelly, librarians.

In the Boys' Glee Club, Thomas Freeburn acted as secretary. There were no other officers.

Mildred Sutherland was the accompanist for both Glee Clubs.

The Youth replies, "I can."



HI-Y

First Row: Davies, Stiles, Wilson, Shorts, Treat, Owers, Joslin, Mr. Robinson, Heck, Hultine, Wright, Kean, Lavey.
Second Row: Johnson, Andisio, Bieber, Johnston, Clark, Hutchinson, Anderson, Rubinow, French, Moriarty, Judd.

HI-Y CLUB

President Herman Heck
Vice-President Elmore Hultine
Secretary and Treasurer Stuart Joslin
Leader "Robby"

Upon completion of its 12th successful year, the M. H. S. Hi-Y Club can look back upon its record with pride. Under the helpful guidance of its leader and adviser, Mr. C. Robinson, the meetings were held every second and fourth Tuesday of each month in the Congregational Church.

The purpose of the Hi-Y is to "create, maintain, and extend throughout the high school and community high standards of christian character."

The club is non-sectarian and the membership is limited to the three upper classes of the high school. The premier aim of the club is to promote the qualities of good leadership and to bring about among the members themselves the kind of thinking and acting that is honest and straightforward. In carrying out this aim, the Hi-Y Club brings to each member a sense of fair play, cooperation, and of Christian thinking that is invaluable.

"A wise man gives the better counsel."



STUDENT COUNCIL

Left to Right

First Row : Merz, Ford, E. Mohr, Hultine, Aitken, Davies, E. Judd, Dreger.

Second Row : Joslin, Toman, D. Cowles, Ecabert, Gray, Reardon.

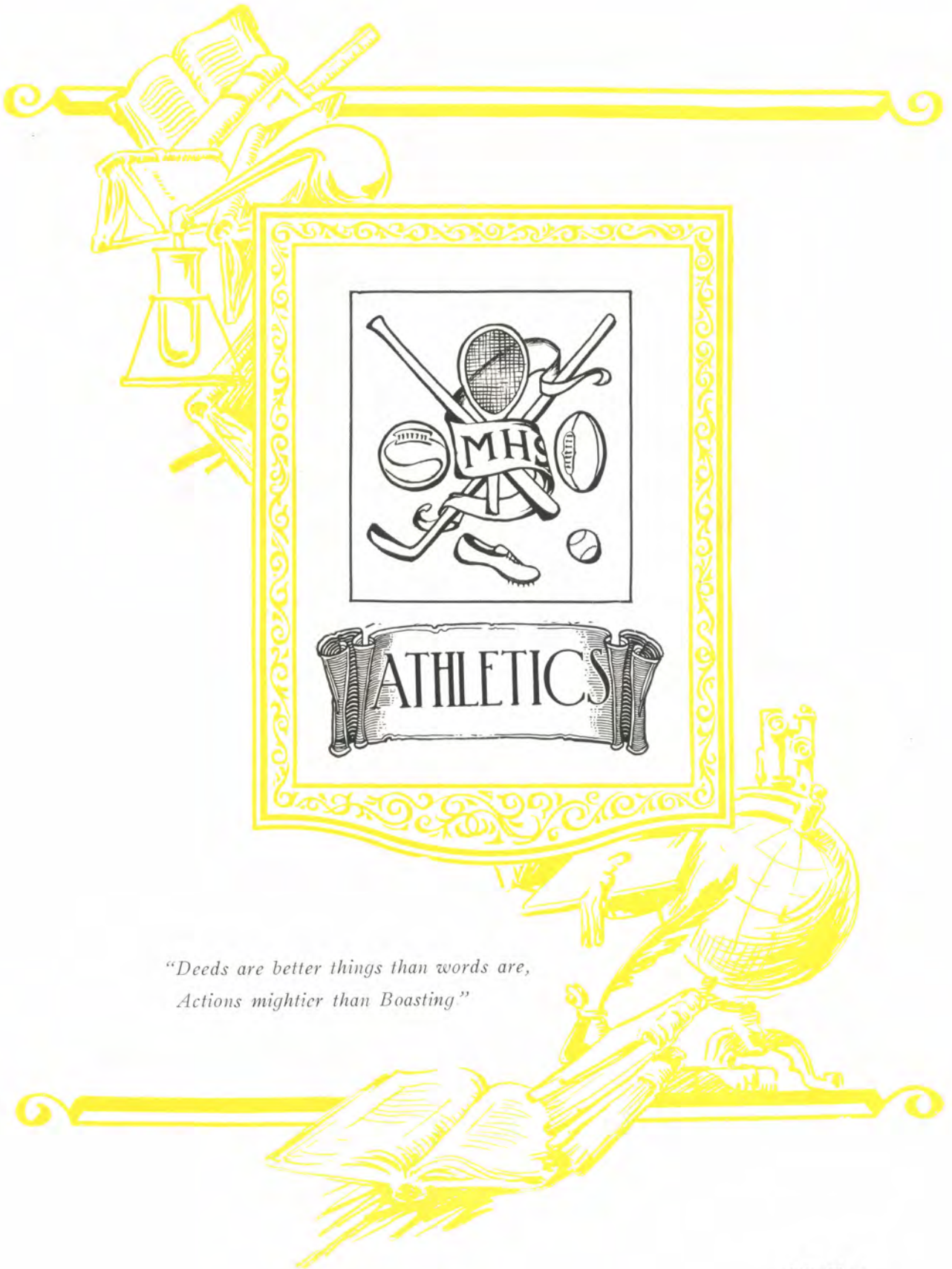
Third Row : Donahue, E. Clark, P. Clark, Mozzer.

STUDENT COUNCIL

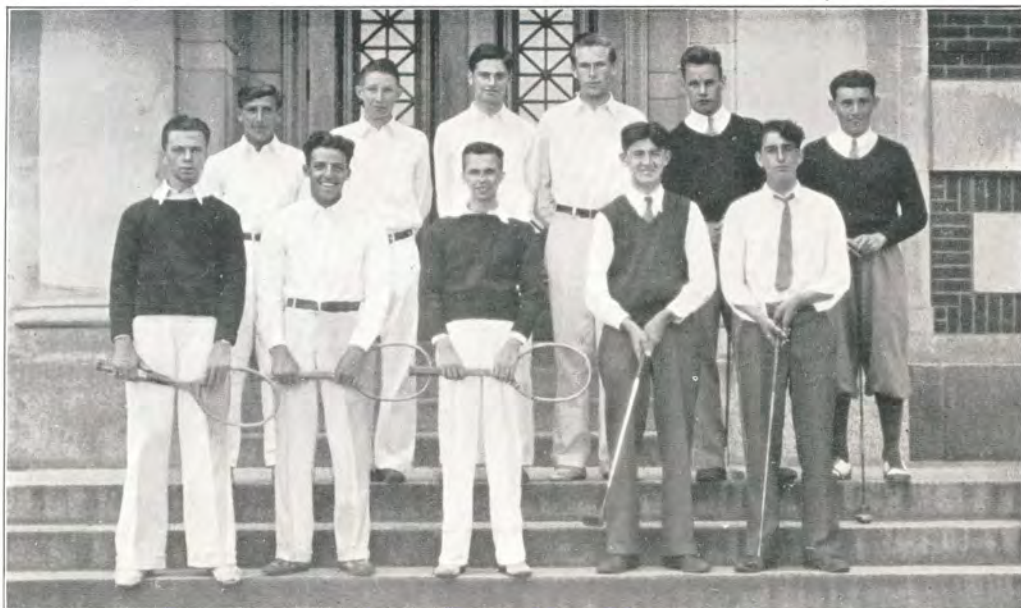
Under the leadership of Mr. Quimby, the student council represented the student opinion in the electing of team managers, their assistants, and in awarding of letters.

Besides this customary duty the council completed an unusual project, that of selecting and standardizing the class colors. The colors are as follows :

1933 —1937B	Fuchsia—gold
1934 —1938B	Purple—gold
1935A—1939A	Blue—silver
1935B—1939B	Blue—gold
1936A—1940A	Green—silver
1936B—1940B	Green—gold
1937A—1941A	Fuchsia—silver
1937B—1941B	Fuchsia—gold
1938A—1942A	Purple—silver
1938B—1942B	Purple—gold



*“Deeds are better things than words are,
Actions mightier than Boasting.”*



TENNIS AND GOLF TEAM

Front Row : Beiber, Della Fera, Davies, Reardon, D. Civello.
 Back Row : Ubanetto, Brown, Rubinow, Britton, Hultine, H. Civello.

GOLF

No. 1 H. Civello
 No. 2 D. Civello

No. 3 Hultine
 No. 4 Reardon

Manchester is represented by a very good golf team. To date the team has won six, and lost one. That loss was to Bulkeley High of Hartford. However, Manchester hopes to average that defeat when she meets Bulkeley June 10.

TENNIS

Captain-Manager—Britton

1. Britton
 2. Urbanetti
 3. Sturgeon

4. Davies
 5. F. P. Della Fera
 6. Bieber

The Tennis Team has won four, lost two, and tied one game to date. A very good season is anticipated. Manchester has three good men in Sturgeon, Britton, and Urbanetti. These boys should give stiff competition at the State Meet at Bridgeport, June 3.



BASKETBALL TEAM

Left to Right

Front Row: Tedford, Garrone, Neill, Captain; Sendrowski, Johnston.

Back Row: Rubinow, Manager; Enrico, Dwight Perry, Faculty Advisor; Mahoney, Sartar, Smith, McPartland, Johnson, Saimonds, Wilfred, Clark, Coach.

BASKETBALL

Captain—NEILL.

Manager—RUBINOW

Coach—CLARK

FIRST TEAM

Left Guard	Saimonds
Left Forward	Johnson
Center	Johnston
Right Forward	Sendrowski
Right Guard	Neill

The team did not have a very successful season due to the lack of cooperation among the players. The team went into a midseason slump during which they dropped 10 out of 12 games. Even then, Manchester just missed being chosen to participate in the annual Yale tournament. Out of the eight teams that did attend, Manchester won from Meriden, Willimantic, and New Britain during the playing season.

The players lost through graduation are: Neill, Mahoney, Sartor, Tedford, Enrico and McPartland. The players that will return are: Johnston, Johnson, Garrone, Smith and Saimonds.



BASEBALL

First Row : Rautenberg, Raguskus, R. Berger, Mahoney, Captain; Lashinske, Katkaveck, Kennedy.
 Second Row : Smith, Healey, Freheit, Comber, Smith, Opaloch, Ecabert, H. Berger.
 Third Row : Sullivan, Manager; Hutchinson, Cobb, Judd, Mr. Kelley, Coach.

BASEBALL

Captain—MAHONEY

Manager—SULLIVAN

Coach—KELLEY

THE TEAM

Left Field	Mahoney
Center Field	Rautenberg
Right Field	R. Smith
Third Base	Raguskus
Short Stop	Kennedy
Second Base	C. Smith
First Base	Sendrowski
Center	Katkaveck
Pitcher	Berger

Eight veterans have returned to the baseball team this year. They are Katkaveck, Berger, Lashinske, C. Smith, Raguskus, Mahoney, Rautenburg, R. Smith. To these have been added Kennedy, at short, and Sendrowski, at first base. Up to the present time Manchester has won from Meriden, the Trade School, and East Hartford. Games have been lost to West Hartford, Bristol, and Middletown.



SWIMMING

First Row: DellaFera, Steckholtz, Leary, Cowles, Treat, Carney, Bergen.
 Second Row: McCormick, Frost, Brennan, Hultine,
 Third Row: Mozzer, Joslin, A. Cowles.

SWIMMING

Captain—COWLES

Manager—F. P. DELLA FERA

Coach—CLARKE

THE TEAM

D. Cowles
 Joslin
 Treat
 A. Cowles
 W. McCormick
 Steckholz

Brennon
 Hultine
 Leary
 Carney
 Mozzer
 McConnill

A fairly successful season was experienced by this year's swimming team. There was no C. C. I. L. meet this year but the meet between Bristol and Manchester practically decided the championship. Bristol won 38 to 37 in a thrilling meet that was interesting and close all the way. Manchester competed in the State Meet and finished seventh. Captain Cowles was the only man to place for Manchester. He finished second in the 50 yard dash. Treat, Hultine, Joslin, and Cowles are lost through graduation.



TRACK
Left to Right

Front Row: Robinson, Packard, Garrone, Hillman, McCormick, Captain; Lane, Judd, Fraser, Coburn.
 Second Row: Stautnar, Peckenham, Carpenter, Morch, Donahue, W. McCormick, Toman, Smith.
 Third Row: Harraburda, Howroyd, Asst. Manager; Diana, Cude, Wolfram, Bellamy, Dumas.
 Back Row: Treat, Manager; Breen, Assistant Manager; Shedd, Charles Wigren, Coach.

TRACK

Captain—ROBERT McCORMICK Manager—CLIFFORD TREAT
 Coach—CHARLES WIGREN

THE TEAM

R. McCormick
 Lane
 W. McCormick
 Judd
 Rowsell
 Dumas
 Hillman
 Shedd
 Garrone

Cude
 Diana
 Fraser
 Robinson
 Stoutnar
 L. Johnson
 Patten
 Murch
 Packard

With comparatively few lettermen back, coach "Pete" Wigren has developed a group of underclassmen to as good a track team as ever represented Manchester High School.

The team has thus far won both its dual meets and literally walked away with the Rhode Island State Meet.

In view of its excellent showing thus far the track team seems probable to journey through its remaining dual meets successfully, and it is more than likely that the Red-White will be very strong contenders for both the C. C. I. L. and State titles.



FOOTBALL TEAM
Left to Right

Front Row: Owers, McCormick, Treat, Radding, Hultine, Captain; Berger, Mildren, Bay, Dellafera.
 Second Row: Barrett, Assistant Manager; Fraser, Sendrowski, Johnson, Siamonds, Judd, Mistretta, Robinson, Mozzer, Hutchinson, Rowe, Thomas Kelley, Coach.
 Back Row: Fisher, Manager; Wolfram, Pond, Kaminsky, Rautenberg, Korch, Comber, Breen, O'Leary, Ecabert, Smith, Bellamy, Leone, Assistant Manager.

FOOTBALL

Captain—HULTINE

Manager—FISCHER

Coach—KELLEY

FIRST TEAM

R. E.Hultine	R. E.Saimonds
L. T.McCormick	L. H. B.Judd
L. G.Radding	R. H. B.Della Ferra
C.Treat	Q. B.Mozzer
R. G.Rowe	F. B.Sendrowski
R. T.Berger	H. B.Smith, Fraser, G. Robinson

This year's football team had a fair season, winning four and losing four. Manchester started acquaintances with Bulkeley High of Hartford by beating her 7 to 6. Willimantic, Manchester's big rival was easily beaten 21 to 12. Six first-string men graduate this year, but Coach Kelley has some very able material to fill in the vacancies, and it is expected that Manchester will have a banner season next year.



SOCCER TEAM
Left to Right

Front Row : Mr. Greer, Coach; Nichols, Enrico, Kennedy, Captain; Davies, Hillman.
 Second Row : Reimer, Diana, Farr, Gray, Corna, DeSimone M., DeSimone J., Ulbrich, Scott,
 Reals, Stiles, Manager.
 Third Row : Grady, Donahue, Waddell, Wier, Simmons, McCann, Leslie, Donahue, Rooney.

SOCCER

Captain—STUART KENNEDY Manager—HALLET STILES
 Coach—HUGH GREER

THE TEAM

or, Gray
 jr, Desimone, Corna
 cf, Kennedy
 jl, Scott
 ol, Davies

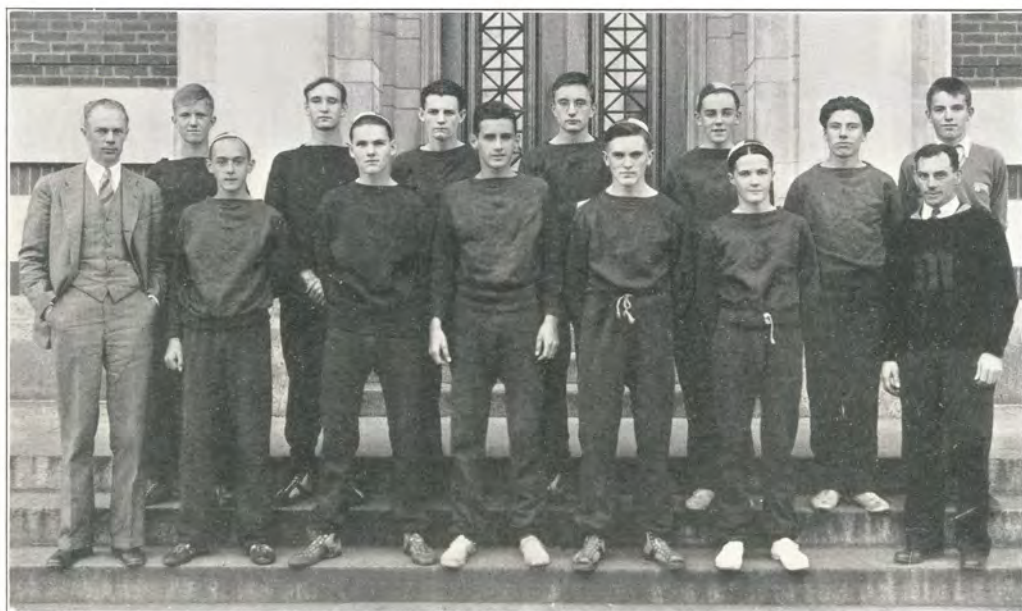
lh, Weir
 ch, Rooney
 rh, McCann
 lfb, Donahue
 rfb, Hillman

Goal, Enrico

REVIEW OF SEASON

The soccer team successfully completed its second year with 10 victories, 1 defeat, and 1 draw. Under the careful supervision of Coach Hugh Greer, soccer is fast becoming a very successful sport at Manchester High School. A C. C. I. L. League, which was started for soccer last fall, was easily captured by the Red and White.

Most of the credit for such a splendid season must be given to Coach Greer and Captain Kennedy. Without their unceasing efforts, the team could never have achieved such a success.



CROSS COUNTRY TEAM
Left to Right

Front Row: Charles Wigren, Coach; Packard, Murch, French, Captain; Donahue, Dannaher, James Crowe, Trainer.
Back Row: Hagenow, Stoutnar, Coburn, Cude, Peckenham, Toman, Gryk, Manager.

CROSS COUNTRY

Captain—KINGSLEY FRENCH Manager—JAMES TOMAN
Coach—CHARLES WIGREN

THE TEAM

Murch
Packard
French

Donahue
Dannaher
Peckenham

In the second season of its existence at Manchester High, the Cross Country Team experienced a very successful season, capturing the C. C. I. L. title and placing third at the State Meet at Yale.

Many new candidates have entered the tryouts this year and it looks as though the team will have good material for the coming season.

M H S

1929



GRACES



L'ARC DE TRIOMPHE

1933



DISGRACES



GOLD DIGGERS



FRESHMAN FOLLIES



MAKING UP



A BICYCLE
BUILT
FOR TWO



TUMBLING TUMBLERS



WALL
FLOWERS
?



ALL SCHOOL WHITE TEAM

First Row : Faith Galinat, Ada Webb, Doris Cervini, Captain; Evelyn Peckham, Bernice Robinson.
 Second Row : Frieda Roth, Margaret Haugh, Marjorie Mitchell, Kay Mrosek, Wilhelmina Ofira, Clara Wray.



HOME ROOM TEAM

First Row : Misses Johnson, Lerch.
 Second Row : Linde, Johnson, Lupien Captain; Leewin.



GIRLS HOCKEY

Johnson, Wray, Webb, Montie, Reymannder, Mrosek, Dreger, Roth, Huebner, Arson, Pickles, Brennan, Mitchell, Haugh.

GIRLS' ATHLETICS

The girls of Manchester High School are steadily gaining higher rank in athletic honors. They have, under the direction of Miss Blanche Feder, Physical Education instructor, followed through successfully the All-Blue and All-White team idea.

Following the annual Hare and Hound Chase, which ended at the Bunce School, a new sport, that of soccer, was introduced into the annuals of Freshmen Girls' Athletics and the Varsity Team played the Alfred Plant Jr. High. The Manchester team put up a gallant fight against opponents who have played the game for a much longer time, but they lost 9-1. Field Hockey was played along with Soccer. A game with the West Hartford High School Hockey Team was played and the local team tied the score at 3-3. The Fall Tennis Tournament was won by Eleanor Huebner who defeated Edith Brown 6-0, 1-6, 6-3.

As the fall events were brought to a close, Senior and Junior Life Saving classes were started for advanced swimmers, and basketball was again put into active play. One hundred and thirty girls reported for after-school basketball, making up 20 teams. From these an All-Blue and an All-White school team were chosen. These teams represented M. H. S. at a Round Robin Tournament held at West Hartford High School. The West Hartford, Wethersfield, and Bloemfield High Schools also participated. The Round Robin was won by the Manchester All-White team from the West Hartford All-Blue team, the score being 17-12. The season was brought to a close by the playing of a Home Room Tournament. Twenty-six rooms entered and Room 14 in the Franklin Building, of which Elizabeth Lupen was captain, was successful in vanishing all its rivals.

In the Life Saving Bracket six girls passed the difficult Senior Life Saving tests, and fifteen girls passed the Junior tests successfully.

All sports during the school year are run on the competitive Blue and White basis. The points won by each girl are reckoned with the team points which go toward the banner award at the end of each year. In 1932, the Blues were successful in winning the banner. Keen competition has been displayed between the two teams which has done much to promote the feeling of fair play.

ATHLETIC SUMMARY

1932—1933

FOOTBALL—Won 4, Lost 4

M. H. S.	2	Hartford Pub.	20
M. H. S.	13	Middletown	6
M. H. S.	0	Bristol	6
M. H. S.	26	Meriden	13
M. H. S.	7	East Hartford	19
M. H. S.	0	West Hartford	20
M. H. S.	7	Bulkeley (Hd)	8
M. H. S.	21	Willimantic	12
M. H. S.	76	Opponents	102

SWIMMING—Won 3, Lost 3

Conn. Aggie			
M. H. S.	38	Frosh	42
M. H. S.	51	Meriden	28
M. H. S.	48	Roxbury Prep.	27
M. H. S.	37	Bristol	38
M. H. S.	22	Crosby	53
M. H. S.	41	Commercial	25
M. H. S.	237	Opponents	213
M. H. S. placed seventh in State Meet			

BASEBALL—Won 6, Lost 6

M. H. S.	5	Meriden	2
M. H. S.	7	Trade School	1
M. H. S.	0	West Hartford	3
M. H. S.	1	Bristol	2
M. H. S.	4	Middletown	11
M. H. S.	11	East Hartford	5
M. H. S.	4	Trade School	6
M. H. S.	5	Middletown	4
M. H. S.	1	Meriden	9
M. H. S.	1	Bristol	4
M. H. S.	31	West Hartford	10
M. H. S.	7	East Hartford	2
M. H. S.	57	Opponents	59

TENNIS

M. H. S.	1	Meriden	4
M. H. S.	3	Rockville	2
M. H. S.	4	West Hartford	1
M. H. S.	1	Bristol	4
M. H. S.	3	Hartford Pub.	2
M. H. S.	5	New Britain	1
M. H. S.	5	Willimantic	1
M. H. S.	1	Meriden	4
M. H. S.	5	Bristol	0
M. H. S.		West Hartford	
M. H. S.		New Britain	
M. H. S.		Opponents	

GOLF

M. H. S.	12½	Glastonbury	5½
M. H. S.	16	Lewis	2
M. H. S.	13½	West Hartford	4½
M. H. S.	13½	Hartford Pub.	4½
M. H. S.	15	West Hartford	3
M. H. S.	7	Bulkeley	11
M. H. S.		Meriden	
M. H. S.	13½	Glastonbury	4½
M. H. S.		Lewis	
M. H. S.		Meriden	
M. H. S.		State Meet	
M. H. S.		Opponents	

CROSS COUNTRY—Won 3, Lost 2

(Low score wins)

M. H. S.	19	Glastonbury	36
M. H. S.	18	Middletown	37
M. H. S.	28	Norwich	27
M. H. S.	16	E. Hartford	39
M. H. S.		State Meet	
(3rd place)			
M. H. S.	36	(Hillhouse 1st)	
M. H. S.		Hartford	19
M. H. S.		Thanksgiving Race	
(2nd place)			
M. H. S.	117	(Hartford 1st)	
M. H. S.	117	Opponents	158

BASKETBALL—Won 9 Lost 10

M. H. S.	33	Rockville	30
M. H. S.	37	Meriden	33
M. H. S.	30	New Britain	29
M. H. S.	28	Alumni	43
M. H. S.	18	Bristol	41
M. H. S.	18	East Hartford	28
M. H. S.	29	West Hartford	19
M. H. S.	19	Middletown	37
M. H. S.	22	Hartford Pub.	33
M. H. S.	20	Meriden	22
M. H. S.	36	Willimantic	26
M. H. S.	17	Bristol	30
M. H. S.	27	Hartford Pub.	41
M. H. S.	25	East Hartford	27
M. H. S.	17	West Hartford	29
M. H. S.	38	Rockville	17
M. H. S.	28	Middletown	26
M. H. S.	35	Willimantic	29
M. H. S.	43	Trade School	23
M. H. S.	530	Opponents	562

SOCCKER—Won 10, Lost 1, Tied 1

M. H. S. 2	Glastonbury 2
M. H. S. 2	Windsor 1
M. H. S. 0	Weaver 4
M. H. S. 2	Meriden 0
M. H. S. 4	Kingswood 2
M. H. S. 5	Bristol 0
M. H. S. 3	Glastonbury 0
M. H. S. 2	Kingswood 0
M. H. S. 3	West Hartford ... 0
M. H. S. 4	East Hartford 0
M. H. S. 7	Suffield Acad. ... 1
M. H. S. 2	Weaver 1
M. H. S. 36	Opponents 11

TRACK

M. H. S. 69½	Meriden 21½
M. H. S. 69	Middletown 26
M. H. S. 41	R. I. State Meet First Place
M. H. S. 42 2/3	Hartford Pub. 61 1/3
M. H. S.	State Meet (Yale) Tie for Third
M. H. S. 60	Bristol 35
M. H. S.	West Hartford
M. H. S.	CCIL (Hart- ford)

TRACK RECORDS

Manchester High, accurate to May, 1933

Event	Holder	Class	Time or Distance
100 yds.	D. Squatrito	'32	9.9 second
220 yds.	F. Wittmann	'32	22.2 seconds
440 yds.	R. Stoutnar	'33	54.2 seconds
880 yds.	T. Chambers	'27	2 min. 8.3 seconds
1 mile	J. McCluskey	'29	4 min. 35.4 seconds
High Jump	Patton	'35	5 ft. 8¼ inches
Broad Jump	R. Jewell	'31	21 ft. 11¾ inches
Discus	W. Johnson	'29	115 ft. 5 inches
Shot Put	D. Squatrito	'32	47 ft. 5 inches
Javelin	A. Olson	'32	156 ft. 4 inches
Pole Vault	R. McCormick	'33	12 ft. 2 inches
880 relay	C. Smyth, D. Robertson R. Jewell, F. Wittmann		1 min. 36.4 seconds

ATHLETIC HONOR ROLL

CAPTAINS

FOOTBALL—Elmore Hultine—"Swede" was an end. He was also on the golf and swimming teams.

SOCCER—Stewart Kennedy—"Stewie" was our point-getter. He was also on the baseball team.

CROSS-COUNTRY—Kingsley French—"King" was a sure point-getter.

BASKETBALL—Ernest Neil—"Butch" was the leading scorer for the year.

SWIMMING—Dana Cowles—"Dana" was on the team for four years.

BASEBALL—Francis Mahoney—"Honey" was on the baseball team and on the the basketball squads for three years.

TENNIS—James Britton—"Jim" was captain of the team for two years.

TRACK—Robert McCormick—"Bob" was also a good tackle on the football team.

* * * * *

CLIFFORD TREAT—"Tip" was a good man in both football and swimming.

RAYMOND BERGER—"Ray" was a pitcher on the baseball team and a tackle on the football team.

VICTOR DAVIES—"Vic" was a star wingman on the soccer team. He also played tennis.

GENO ENRICO—"Gelop" played soccer two years and was on the basketball squad for three years.

JOHN HILLMAN—"Johnny" was on the soccer and track teams.

STUART JOSLIN—"Stewie" was the "iron man" of the swimming team.

STANLEY KATKAVECK—"Mickey" was a catcher on the baseball team for two years.

THEODORE OWERS—"Teddy" played football and was on the track team.

ANDREW RAGUSKUS—"Andy" was the baseball team's third baseman.

NORMAN LASHINSKE—"Lash" was a pitcher for two years.

ROBERT LANE—"Bob" was a highjumper for two years.

FRANCIS P. DELLA FERA—"Fritz" was a football and tennis player.

"THE TORCH BEARERS"



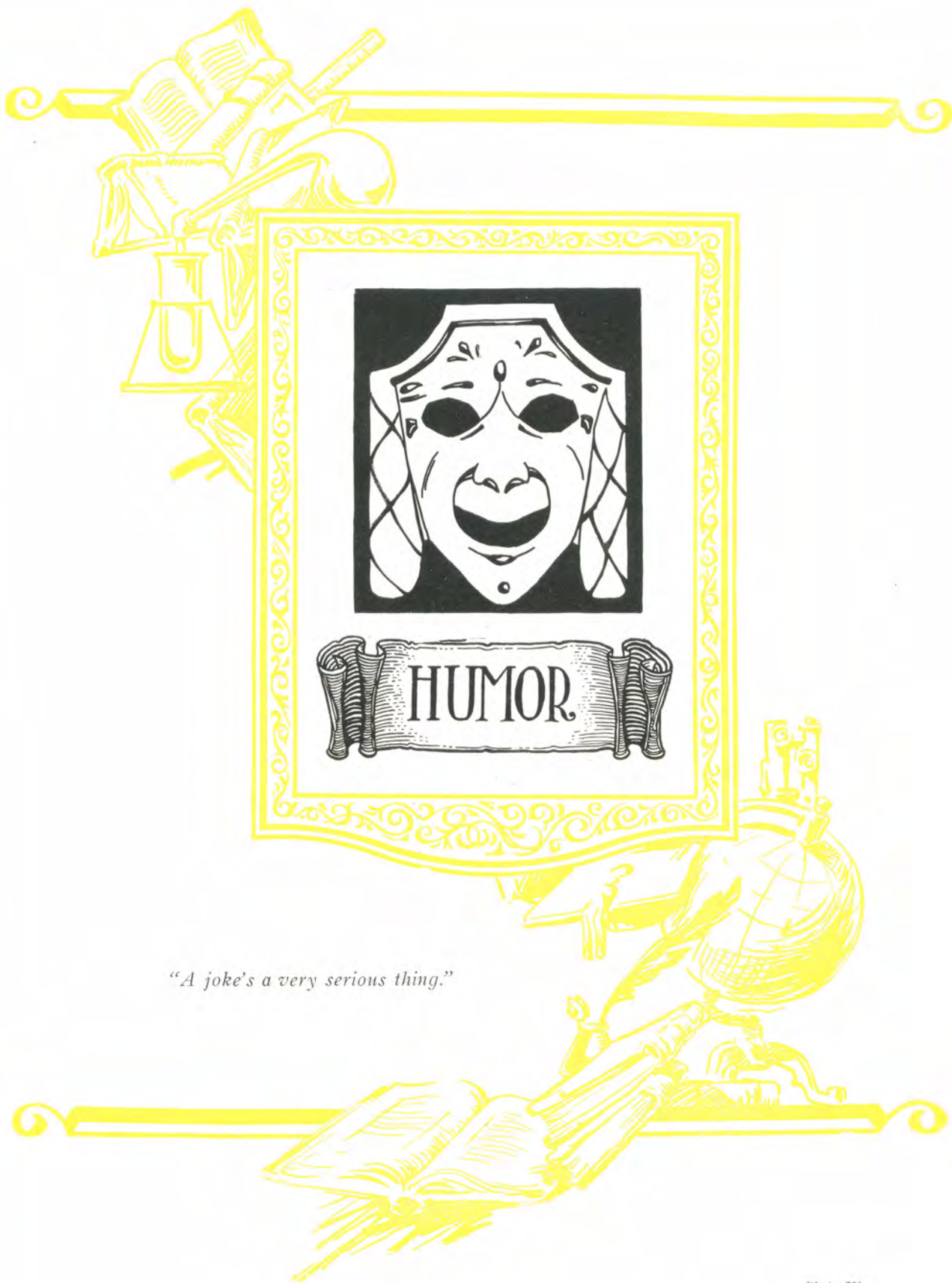
ACT I

Davies, Bieber, B. Quimby, Sullivan, A. Aitken, L. Carney, D. Wirtalla, Joslin, Wright, B. Quinn.



ACT II

Bieber, Sullivan, B. Quinn, L. Carney, B. Quimby, Davies, A. Aitken, E. Andrews, Joslin, Toman.



"A joke's a very serious thing."

W. Butch—"I passed by your house yesterday."
Beda—"Thanks."

Hultine—"Don't you ever file your nails?"
Treat—"No, I just cut 'em and throw 'em away."

Father—"There's nothing worse than being old and bent."
Son—"Yes, there is."
Father—"What is it, then?"
Son—"Being young and broke."

Miss Walsh—"Give me three collective nouns."
Enrico—"Fly paper, waste-basket, and garbage can."

The thunder roared and the lightning flashed.
Don't worry boys! It's the Robinson's Nash.

Mr. Robinson—"Some of you fellows may think you're budding engineers,
but you'll never blossom."

McGann—"My mother served me soap flakes instead of cornflakes this
morning."

Jean—"What a joke! Were you mad?"
McGann—"Mad! I'll say I was mad! I frothed at the mouth."

Miss Estes—"A preposition is a bad word to end a sentence with."

If the girls have "hair-ribbon day," why can't the fellows have "shirt-
rippin" day?

ONE FOR THE SOCCER TEAM

It's up to you to provide the transportation between you and your goal in life.

"Hello! Mr. Perry? This is the Hartford Hospital calling. You are a
father."

Mr. Perry—"Oh, stop your kidding."

Mr. Robinson—"Maskel, go to the board and fix that diagram. I want
it arranged so that the bell will ring."

Maskel—(looking wistfully at the clock)—"If only it would."





GRADUATION

—An epoch in the lives of hundreds of students.

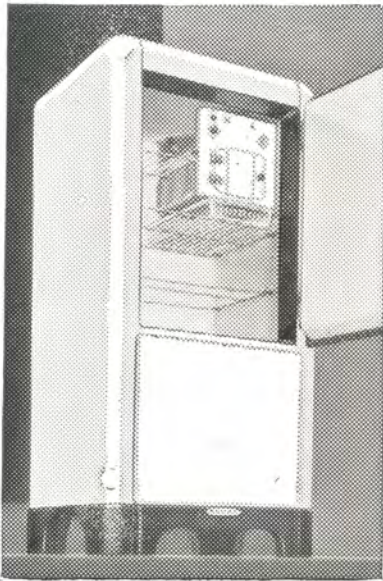
Some will continue their education — a great many others are prepared to step out into the world and embark upon a business career.

You, as students, have been for the most part, supported by your parents up to this time. If successful in obtaining a job you will naturally become self supporting.

That is the time to learn, if you have not before, that it's a very wise habit to SAVE a certain percentage of your earnings each week.

—The—
Savings Bank of Manchester

NORGE



**\$109⁵⁰
up**

DELIVERED

Norge prices start at \$109.50 (subject to change without notice) for a real practical refrigerator; 4.4 cubic feet capacity. 8 other models up to 11.05 cubic feet.

**the modern
lifetime electric
refrigeration**

Really, you should consider your electric refrigerator as a lifetime investment. Then you will select a Norge, for only Norge has the lifetime Rollator - - the compressor with only 3 simple moving parts and nothing to wear.

Norge will add beauty to your kitchen, too, for Norge cabinets are years ahead in design - - a glistening white cabinet rising from a black bracket-foot base.

Norge has jumped from 29th place in sales in 1929 to the top in 1933. Norge has been tested and approved by American housekeepers.

**Costs less to own
and less to operate**

WATKIN'S

Serving Manchester for 58 Years



FLOWERS

THE PERFECT GIFT FOR EVERY
OCCASION

PARK HILL FLOWER SHOP

Leading Florists

913 MAIN STREET

SO. MANCHESTER, CONN.

COMPLIMENTS OF

THE

MANCHESTER ELECTRIC

COMPANY

ROYAL ICE CREAM

M. A. ORFITELLI, Prop.

WE HAVE A MODERN AND UP-TO-DATE PLANT IN OUR
ROYAL TREAT

STORES, ORGANIZATIONS and FAMILY TRADE OUR AIM
and

WE FEEL SURE A TRIAL WILL CONVINCe YOU.

27 Warren Street Tel. 8942 Manchester, Conn.

KEMP'S Inc.

FRIGIDAIRE

A GENERAL MOTORS VALUE

Oakes' Service Station

563 MAIN STREET

So. Manchester, Conn.

COMPLIMENTS

—of—

THE CLASS OF 1933

BEST WISHES FOR SUCCESS
TO THE
CLASS OF 1933

RUBINOW'S

LEADING STYLISTS SINCE 1907



SINCERE GOOD WISHES TO ALL
GRADUATES OF 1933

MARY E. SEASTRAND

BEAUTY NOOK

853 Main St., So. Manchester, Conn.

After Graduation

WHY NOT make recreation your vocation? Enjoy your work and give pleasure to others; be healthy and happy and teach others to be the same. Such is the life of a teacher of physical education.

SAVAGE SCHOOL
FOR PHYSICAL EDUCATION

Established 1890

A teacher Training School which prepares men and women to become teachers, directors, and supervisors of health and physical education in schools, colleges, playgrounds, clubs, private institutions and industrial organizations.

The curriculum of the three-year course includes practical instruction in all forms of athletics, gymnastics, games, dancing, swimming, dramatics, and the like; also the essential courses in education, psychology, anatomy, physiology, hygiene, and others, thoroughly covering the theory and practice of health and physical education.

*An Exceptionally Strong Faculty
Catalogue Upon Request*

Salaries higher than for grade teaching.

Employment bureau for students and graduates.

Register Now for class entering
September 18, 1933

SAVAGE SCHOOL
308 West 59th St., New York City



BRYANT-STRATTON
COLLEGE

IN PROVIDENCE, RHODE ISLAND

Offers an economy plan of
College Courses

2-year programs - 44 weeks each

Bachelor of Science Degrees in
Business Administration, Finance,
Accounting (C. P. A.), Secretarial,
Teacher-Training, Co-educational

Select Placement - Student
Life - Athletics - Dormitories

For 71st Year Catalogue, write Dean,
Bryant-Stratton College, Providence, R. I.

HAS NO CONNECTION WITH ANY OTHER INSTITUTION



Albert Steiger, Inc.

"The Store of Specialty Shops"

Main at Pratt Street

Hartford, Conn.

YOUTH'S PREP SUITS

\$16.95

We specialize in Youth's Finely Tailored Prep Suits, with Two Pairs of Trousers.

STUDENTS' SHOP—Second Floor

GIFT FOR THE GRADUATE

You will find our prices on graduation watches to meet present day conditions.

Ladies' Wrist Watches \$13.50 and up—Strap Watches \$5.00 and up

The Dewey-Richmond Company

JEWELERS—STATIONERS—OPTICIANS

767 Main Street

South Manchester, Conn.

HULTMAN'S

917 MAIN STREET

SOUTH MANCHESTER, CONN.

Men's **CLOTHING** Boys'

FURNISHINGS and SHOES

QUALITY MERCHANDISE — REASONABLY PRICED

BLUE COAL

W. G. GLENNEY CO.

336 North Main Street

Manchester, Conn.

COMPLIMENTS

We extend to you our heartiest greetings as you are about to leave school and step out into the world to choose what maybe your life's work, or to go on to higher education. We wish you success.

Clean and wholesome living is most essential. Keep healthy by using plenty of good milk either as a drink or in small foods. It is practically impossible to exaggerate the food value of milk in this age of strenuous living. No other food ever tested by science and found worth while has the natural assets as a supplement to the average American diet as good, clean, and wholesome milk properly pasturized.

Bryant & Chapman Company

49 Hall Street

So. Manchester, Conn

COURTESY, QUALITY, SERVICE

Quality

That's What Customers
Want—And Are Getting
at Hale's

IF you are one of the thousands of customers who are tired of cheap, inferior merchandise and want **QUALITY** goods because you have always bought dependable merchandise—then shop Hale's. For over thirty-five years Hale's has been known for its **Quality** merchandise — at popular prices. Every item sold carries Hale's money—back guarantee. Get the habit of shopping in this department store—it will pay you!

The J.W. Hale Company
SOUTH MANCHESTER · CONN ·

The Sign Of
GOOD ICE CREAM

MADE AT
SO. MANCHESTER CONN.



It's "MADE IN MANCHESTER" at

THE DAYLIGHT FACTORY

Tel. 5250 SUMMIT STREET So. Manchester

We **Cater** *To*

**Parties, Weddings and
Entertainments**

of all kinds

SOLD IN ALL THE LEADING SODA SHOPS

MANCHESTER MOTOR SALES CO.

Authorized Dealers

Ford

THE UNIVERSAL CAR

New Cars, Used Cars, Fordson Tractors, Parts, Service
1069 Main Street Tel. 5462 So. Manchester, Conn.

MOHR'S BAKERY

"Oldest Established Bakery in Manchester"

DIAL 3537

We Pass Your Door Each Day

Visit our Bakery at 18 Gorman Place

NOTHING
BUT THE
FINEST
OF
FLOWERS

ARTISTICALLY
ARRANGED FOR
ALL ORDERS
LARGE OR SMALL

Milikowski
Distinctive Florist

DIAL 6029
F. T. D. SERVICE

Prepare for Business



One and two year courses
of College-Grade qualifying for
superior positions

Accounting
Secretarial Science
Business Administration
Commercial Journalism
Commercial Teacher Training
Co-Educational Placement Bureau
Low Tuition
payable in installments
Many opportunities to earn
room and board

For catalog, address the Registrar

Becker College

Founded in 1887.

Worcester, Massachusetts.

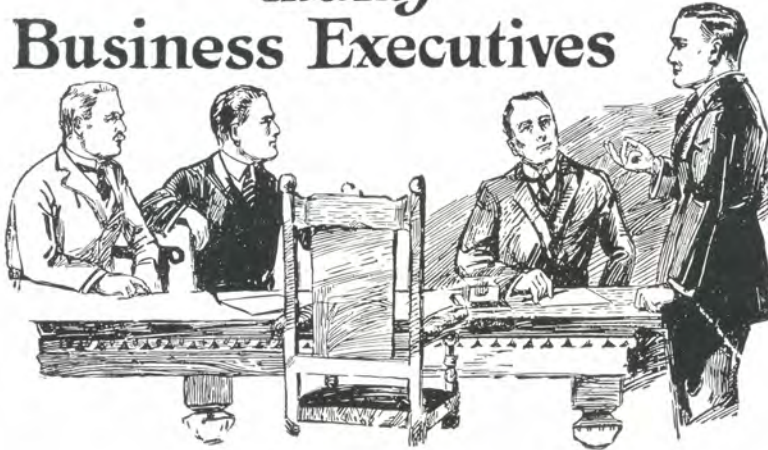
*Crahan Engraving
Company*

*240 Aborn Street
Telephone Gaspee 9421
Providence, R. I.*

*We Specialize In School
Annual Service*

*Engravers of the 1933
"Somanhis"*

The MORSE TRAINING *makes* Business Executives



The Morse course in Accountancy, Organization, System and Business Administration, if faithfully pursued to graduation, will pave the way for you to membership on the board of directors of some large and prosperous corporation.

It is a course of University grade and it is for High School and College graduates. The very fact that a multitude of past Morse men are today occupying enviable positions of trust or controlling successful enterprises of their own is pretty good proof of what this course would do for you.

Our free catalog explains this and other courses. Write, phone or call for it. New students start here every week.

MORSE COLLEGE

183 Ann Street

Hartford, Conn.

THE JOURNAL PUBLISHING Co.,

PRINTING

BOOK AND JOB

ROCKVILLE, PHONE 205-206 CONNECTICUT

The Dougan Dye Works

Incorporated

CLEANERS AND DYERS

Harrison Street

Phone 7155

So. Manchester, Conn.

Wildrose Dress Shop

THE SHOP OF INDIVIDUALITY

The Earliest To Show The Latest

FROCKS FOR GRADUATION AND PARTIES

Organdies—Mousseline—Desoie—Crepes at Popular Prices

597 Main Street

Hotel Sheridan Building

COMPLIMENTS OF

THE

ORFORD SOAP

COMPANY

Best wishes to the class of 1933

from

THE FALLOT STUDIO

Portrait and Commercial Photographers

472 Main Street

Manchester, Conn.

MANCHESTER PLUMBING & SUPPLY CO.

877 Main Street

South Manchester, Conn.

Wilson Sports Equipment

“IF IT’S HARDWARE—WE HAVE IT”

**GUERNSEY MILK and CREAM FROM
OUR OWN HERD**

Mountain Brook Farm

D. W. KELSEY, Proprietor

C. E. House & Son, Inc.

ESTABLISHED 1853

HEAD TO FOOT CLOTHIERS

Ready-Made Clothing, Hats, Caps,

Men’s Furnishings

Fine Footwear for the Whole Family

JOHN I. OLSON

Painter and Decorator

699 Main Street

So. Manchester

Phone 6854

DEPOT SQUARE GARAGE

ERNEST A. RAY

DeSoto—Plymouth—Sales and Service

QUINN'S REXALL DRUG STORE

873 Main Street

South Manchester, Conn.

MEET ME AT THE FOUNTAIN

Quality and Service — Prescriptions Our Specialty

HOLDEN—NELSON CO. INC.

853 Main Street

So. Manchester, Conn.

"MANCHESTER'S LARGEST CASUALTY AGENCY"

SHOES FOR GIRLS

FIT — STYLE — SERVICE

MISS NAVEN

WEST SIDE DAIRY

**SAFE MILK AND CREAM — TUBERCULIN TESTED
PASTEURIZED**

BUTTERMILK

Telephone 7706

FRADIN'S

APPAREL SHOP

757 Main Street

South Manchester, Conn.

THE COFFEE SHOP

GOOD FOOD AT REASONABLE PRICES

WARREN KAY VANTINE

STUDIO

INC.

**School Photographers of
Distinction**

Official Photographer

for

1933 "Somanhis"

160 Boylston Street

Boston, Mass.

MINER'S BARBER SHOP

QUICK SERVICE

**SPECIAL ATTENTION GIVEN TO
CHILDREN**

983 MAIN STREET

CHENEY BLOCK

ALWAYS A GREAT SHOW

—at the—

Cool and Comfortable

WARNER BROS.
S T A T E

THEATRE—MANCHESTER

DONNELLY

WATCHMAKER AND JEWELER

AT THE CENTER

GIFTS FOR GRADUATION

Elgin Watches **\$16.50** and up

Ollendorff Watches **\$14.75** and up

Pen and Pencil Sets **\$2.00** and up

See the Conklin Nozac **\$5.00**

OTHER USEFUL GIFTS

PERRETT & GLENNEY, INC.

GENERAL TRUCKING and
HARTFORD, SILVER LANE & SO. MANCHESTER
BUS LINE, INC.

Arrangements can be made for special parties

Hartford Phone 8-2835—8860

Manchester Phone 3063—8864

CLEARY'S LUNCH

A Good Place To Eat

Telephone 3884

697 Main Street

So. Manchester, Conn.

1099 Main Street

Telephone 6367

GARRONE'S MARKET

(The Store of Quality)

MEATS — FRUITS — VEGETABLES

Don't Buy Real Estate or Insurance

UNTIL YOU HAVE TALKED WITH

ROBERT J. SMITH

Phones: 3450—5746

Main St.—So. Manchester, Conn.

G. E. WILLIS & SON, Inc.

LUMBER—COAL

2 MAIN STREET

MANCHESTER, CONN.

MAGNELL DRUG CO.

1095 MAIN STREET

SO. MANCHESTER, CONN.

Prescription Druggists

WELL DRESSED YOUNG MEN

—TRADE AT—

GLENNEY'S

SOUTH MANCHESTER, CONN.

STATE SHOE REPAIRING

WE REBUILD Your Shoe — Not Just COBBLE Them.

747 Main Street

State Theatre Building

FOR SERVICE—DIAL 8838

KEITH'S

Where you can afford to buy good furniture



For Your Outdoor Living Room

If there's one place in the house more than another, where good furnishings pay dividends in satisfaction, it's not in the house at all, but out-of-doors.

Modern living in summer time means living out-of-doors. Porches and lawns must be furnished—for appearance and comfort.

Fortunately, summer furnishings this year place a very small strain on any budget.

GLIDERS
\$8.50
and up

STEAMER CHAIRS
79c
and up

PORCH ROCKERS
\$1.95 to \$4.95

PORCH SHADES
in sizes
\$3.35 to \$8.95

A W N I N G S
All Sizes
Made To Order

PORCH RUGS
\$3.95 to \$6.50

UMBRELLAS
TABLES
CHAIRS

Keith's
Opposite High School
South Manchester

LAWN SWINGS
SETTEES
HAMMOCKS

Faculty Autographs

A. A. Kiplanck
Clarence P. Quincy
Arthur H. Deery
Elizabeth R. Olson
Avis C. Walsh
Helen J. Estes
Eugenie Walsh
A. H. Potter
Carrie B. Spagard
Chester Robinson
Marguerite Oates
Russell A. Wright
Kilda V. Anderson
Beulah E. Todd
Gene Gelions
Florence Hopkins
G. Wilson
Corinne Davis
Jeanne M. Low
Avis M. Kellogg
Philip L. Emery
Selah Richmond
Ellenor Rogers
Edson M. Bailey
Thomas F. Kelley
Hugh S. Greer
Gertrude Obermeyer
Mary E. Mc. Guire
Mary H. Burke
Lewitt E. Perry
Nathan B. Gatchell
Helen W. Smith
Charles L. Wigren
Helen R. Page
Janet E. Wilcox
Neurgh. Fair
Dorothy C. Brown
Marion M. Casey
Charlotte G. Gillette
Mary A. Bowen
Warren D. Condon
Nelle L. Warren
Stanche Feder
W. J. Clarke
Charles E. Turner

Autographs

