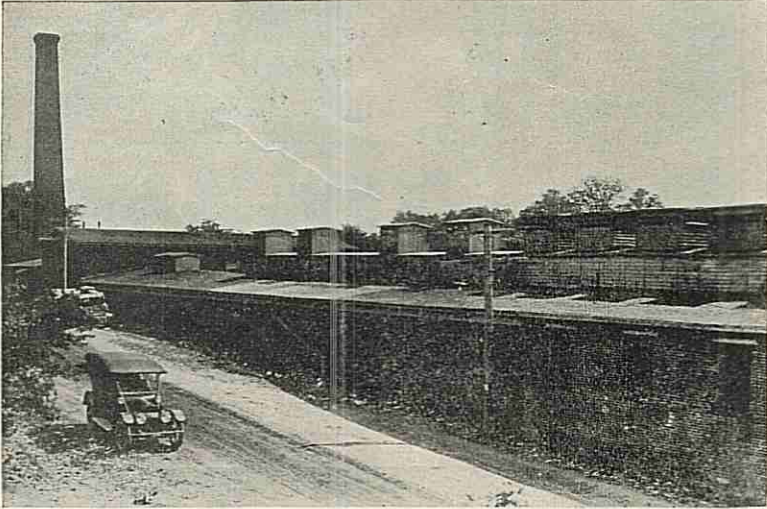


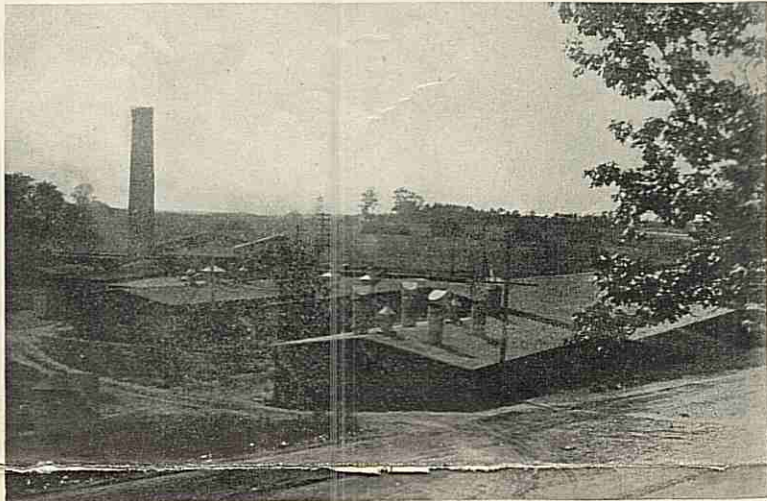
THE FOULDS GROUP OF PAPER MILLS.

Modern Plants With Good Shipping
Facilities—Output Thirty-five
Tons a Day.

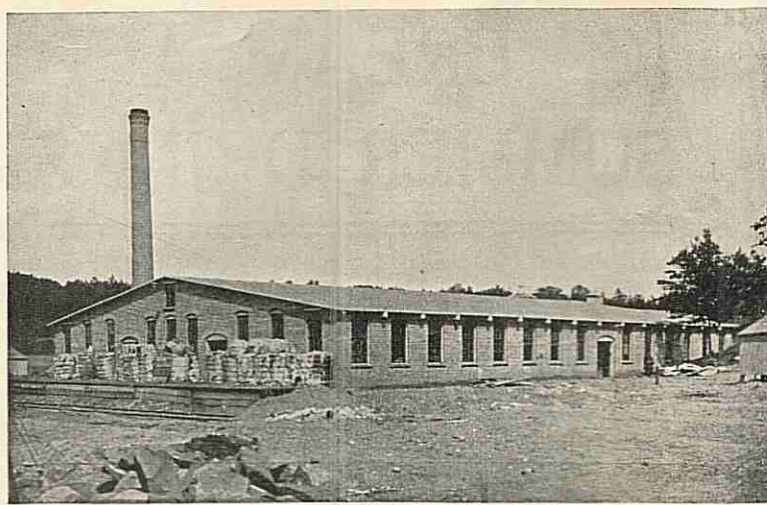
The group of paper mills shown herewith is clustered around a railroad siding at Parker village. The three mills owned and operated respectively by the Lydall & Foulds Paper Company, the William Foulds & Company, and the Colonial Board Company are allied in ownership, although operated independently. They owe their existence to the purchase 40 years ago by William Foulds of a small paper mill at Parker village formerly operated by Salter & Strong. Mr. Foulds was a needle manufacturer, but soon saw possibilities in the paper business. The little mill which he bought from Salter & Strong was making about 500 pounds a day of strawboard.



Mill of The Lydall & Foulds Paper Co.



Paper Mill of William Foulds & Co.



New Mill of Colonial Board Co.

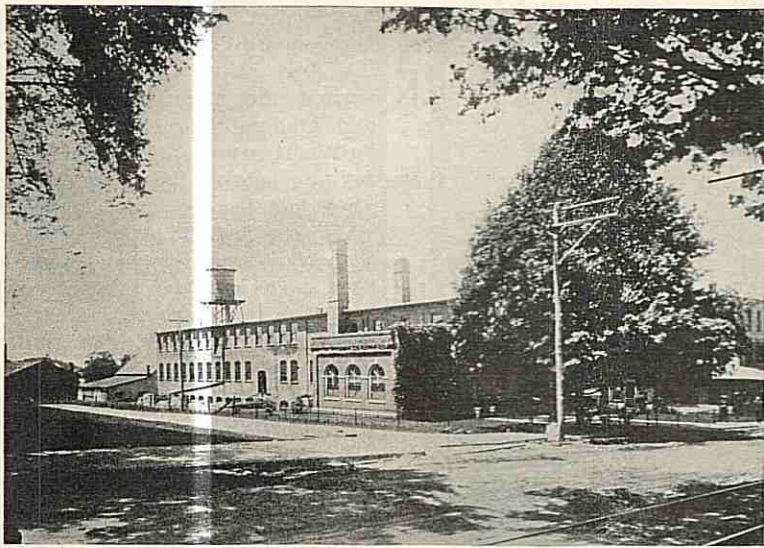
THE J. W. HALE CO.

Corporation With \$55,000 Capital
Doubles Business in Five
Years.

A mercantile business which has had a remarkable growth and is still advancing by rapid strides is that of the J. W. Hale Company. It was founded by J. W. Hale, who was for many years connected with the general store of Hale, Day & Company on Charter Oak street. Believing that Manchester was ready to support a dry goods store, Mr. Hale embarked in this business in a rented store on Main street, and after experimenting for a few years he was satisfied that his conclusion was correct, and in partnership with C. E. House built a large brick block on Main street, the ground floor of which they divided between them, Mr. House using one-half for his clothing business and Mr. Hale the other half for his dry goods business. Both stores prospered. Their block was destroyed by fire about eight years ago and they replaced it with the present structure shown in our illustration. In 1910 the business was incorporated with a capital of \$35,000, with J. W. Hale president, L. E. Hale treasurer and F. H. Anderson secretary.

In 1914 Mr. Hale on account of failing health retired from active participation in the business, and L. E. Hale withdrew to give his entire

Realizing the need of a more modern mill, Mr. Foulds bought a mill site at Lydallville and built a one-machine mill. This was afterwards burned and was not rebuilt, but the Lydall & Foulds mill was built to take its place at Parkerville. Then the original Salter & Strong mill was burned and was replaced by the William Foulds & Company's mill adjoining the Lydall & Foulds mill. A short time ago Boston capitalists combined with the Foulds interests in building the Colonial board mill, which was started April 1. These three mills form the nucleus for a growing village. They have the advantage of a siding on the main line of the New Haven road and all are built of brick. Their product consists of paper box boards at the Lydall & Foulds mill, leather board at the William Foulds & Company mill, and binders board at the Colonial mill. From a small beginning of 500 pounds a day at the original Salter & Strong mill the product has grown to upwards of 35 tons a day.



Factory of the Carlyle Johnson Co.

MACHINE MAKERS.

Carlyle Johnson Company Sends
Friction Clutches to Foreign
Countries.

The Carlyle Johnson Machine Company, which had its birth in Youngstown, Ohio, came to Manchester in 1909 and bought the unoccupied factory formerly used by the Eastern Biscuit Company. This was a modern brick structure centrally located on Main street, near the railroad station. Here the firm, with Scott H. Simon as manager, began the manufacture of friction clutches for machine shops and factories and

marine reverse gears. Recently the firm has put on the market a small gasoline boat motor.

The Johnson friction clutch has found a ready market in all parts of the world. The business of the firm has doubled in the last five years and their goods are carried in stock by agents in all the different foreign countries. They now give steady employment to 35 men. Their plant is large enough to permit considerable expansion and at the present rate of growth the business will demand it all in the near future. Mr. Simon, the manager, is an active business man and has taken a lively interest in town affairs. The firm bids fair to become one of Manchester's prominent concerns.



Watkins Brothers' Block

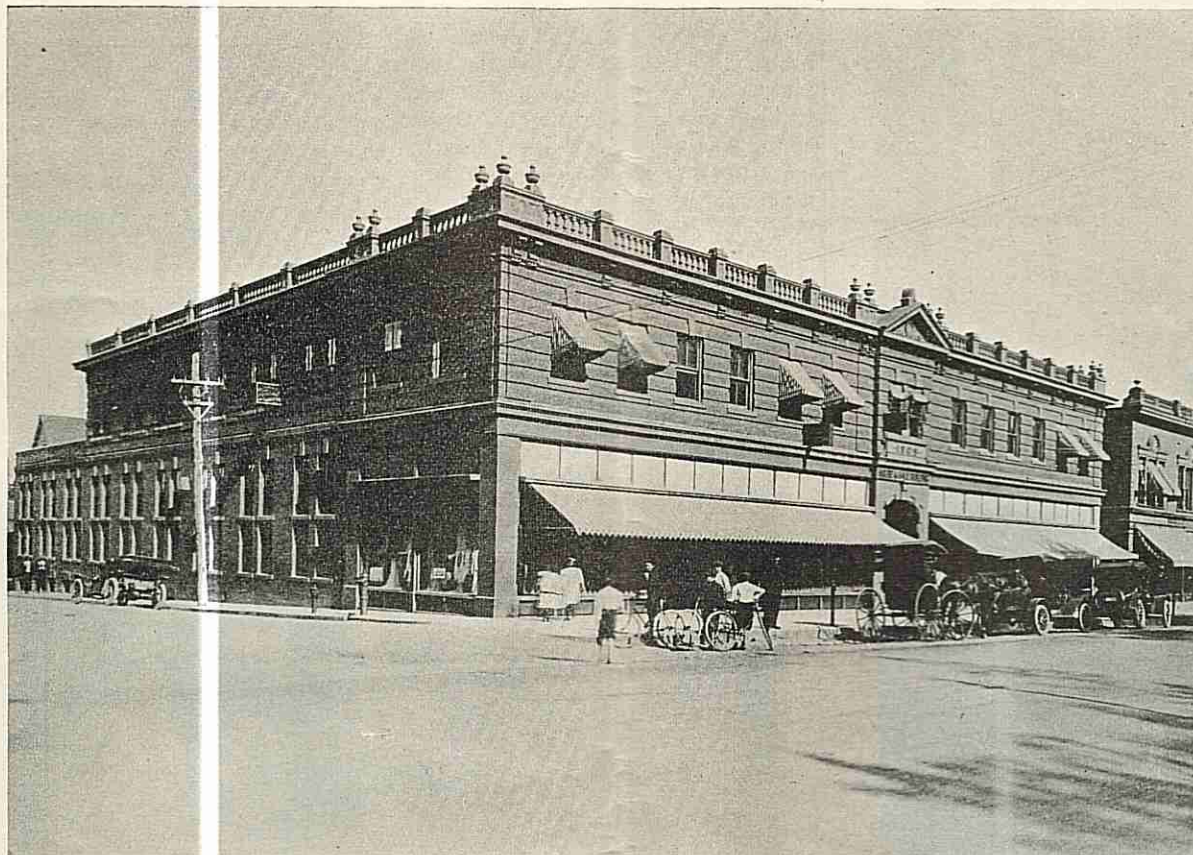
MANCHESTER OFFERS MERCANTILE OPENINGS

Its Possibilities Illustrated by Progress of Watkins Brothers.

The mercantile growth of Manchester has kept pace with the growth of its manufactures. It is a noteworthy fact that the merchants of this town have been uniformly prosperous and in any case where they have shown exceptional business ability they have made records of progress far ahead of the average.

Owing to the rapid growth of the town many of the merchants are comparatively recent comers. Some of them, however, have been in business continuously here for 30 or 40 years. Watkins Brothers, for example, began business as undertakers and manufacturers of burial caskets back in 1874 and are today one of our most thriving mercantile concerns. In 1876 they bought out the

furniture stock of W. H. Cheney, then located on the second floor of the old Cheney block at the corner of Main and Charter Oak streets. The firm consisted of C. G. and F. Ernest Watkins. They continued to do a growing business on the second floor of the Cheney block until 1891, when they built their present block. Here they have four floors and a basement with a total area of 22,500 square feet. This floorage will compare favorably with that occupied by the majority of city stores. Every inch of it is utilized, as well as a commodious storehouse in which surplus stock is carried. The addition of pianos to the furniture stock marked an important era in the business. The branch piano store was established in Willimantic in 1904 and in Hartford in 1905. Last year the firm bought out William Wander & Sons of Hartford and thereby secured the state agency for Steinway and other well known makes of pianos. The firm was incorporated in 1912 with a capital of \$100,000. It carries a large variety of high grade furniture and has a large and growing trade in this and surrounding towns.



J. W. Hale Company's Department Store

DESCRIPTION OF FLOATS

(Continued from Page One.)

the Cherusci. He is returning from the battle in the Teutoburg forest, where he was victorious over the Roman commander, Quintilius Varus, in the year 9 A. D. This uprising of the Germanic tribes had been inspired by the cruelties of the Roman legions, and the victory resulting was the turning point in the aggression of the Romans. It saved all northern Europe from the complete domination of the people from the south and created the first German independency. At the side of Arminius on the float stands Tusnelda, his wife. In front of the sacred oak the Druid priest stands with two priestesses preparing for the sacrifice of the Roman prisoners on the altar before them. The prisoners are kneeling under the spears, symbolizing their captivity, and they are guarded by warriors who stand on the float and march beside it.

Second Float.

The legend of the Lorelei is best known from Heine's song of the same name. The float carries out the legendary idea of a siren sitting on the Lorelei rock and singing so sweetly that the knight in the boat is so enchanted that he is drawn toward the rock to perish in the treacherous waters. At the base of the rock are three nymphs, daughters of the Rhine, and the enchanted knight. The two figures in front represent the rivers Rhine and Moselle. With this float 40 fisher maidens and 40 fisher boys march.

Third Float.

In the center of the third float sits Frederick the First, called Barbarossa from his red beard, attended by four pages. Frederick the First was emperor of the Holy Roman empire, 1152 to 1190 A. D., whose aim was the union of all the German peoples. He was so well beloved by his people that they would not believe the news of his death while on a crusade in the Holy Land, and wove around his memory the belief that he was still with them, waiting in the mountain of the Kyffhauser for the day when Germany would be united.

The realization of the aim of Barbarossa, centuries after his death, is the basic idea of this float, with Germania as the central figure. Surrounding Germania are the four kingdoms, Prussia, Bavaria, Saxony and Wurtemberg, representing the component parts of the United German empire. In the foreground of the float we see the other great nation of German speaking people, Austria, with the figures Bohemia and Hungary at her side. Forty soldiers in 12th century costumes accompany the float.

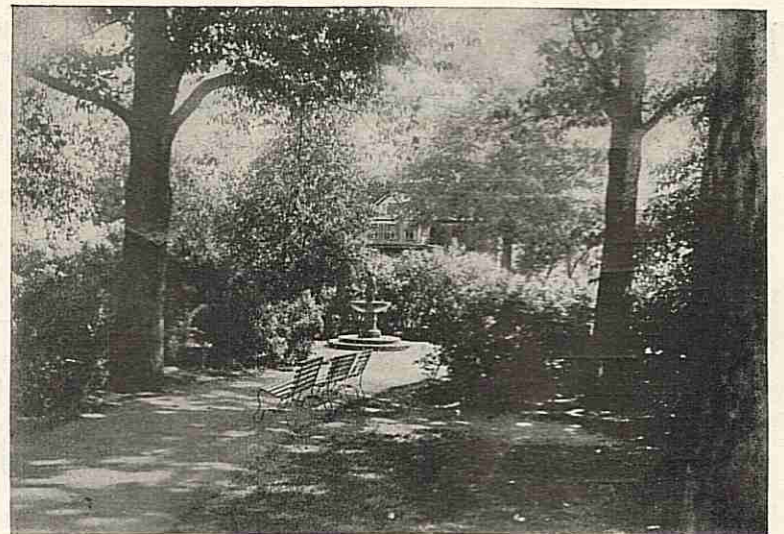
In the evening a chorus of about 100 mixed voices will sing the following songs:
Lorelei Silcher
The Watch on the Rhine... Wilhelm

American Mechanics' Float.

The Mechanics' float is headed by three members representing the Spirit of '76, followed by the degree team, of which there are 13 members, and each represents one of the original colonies. Then follows the float with the Goddess of Liberty ruling over the nation. Some of the characters represented are Israel Putnam, Nathan Hale and Uncle Sam. Following the float are the members of the organization.

Ladies of the Maccabees.

The Mystic Hive, Ladies of the Maccabees, float represents Protection. On the float is a large globe representing the world. The lady commander is represented in the act of protection, a child standing at her



Drinking Fountain in Center Park

feet. There is also the Beehive, represented by six ladies dressed in sashes and caps, and wearing the colors of the order, red, white and black.

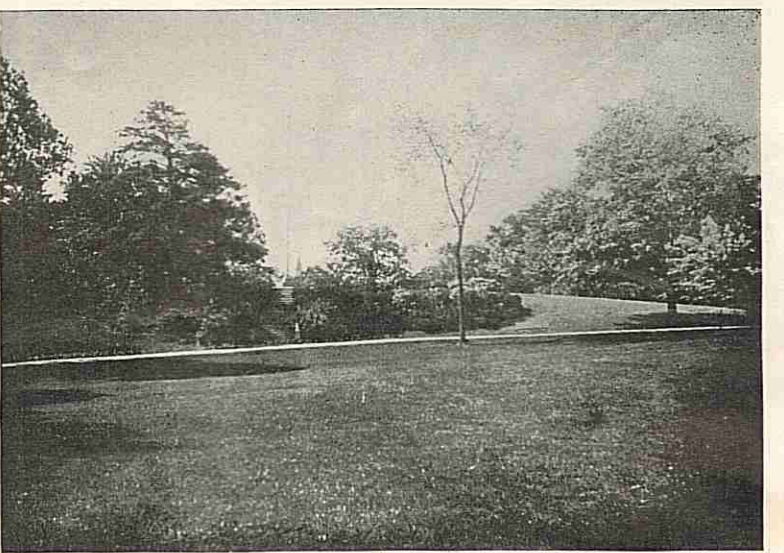
Grange Float.

The Grange float represents the American farmer. The characters of Poma, Flora and Ceres are represented by Miss Olive Cushman, Miss Luna Keeney and Miss Dietz. A man at the plow also rides on the float.

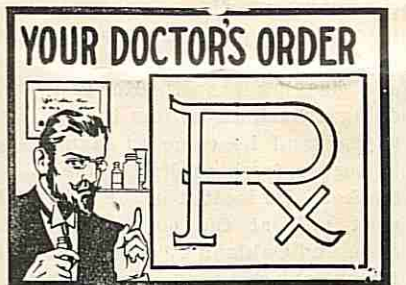
Sunset Rebekah Lodge.

Sunset Rebekah Lodge have an automobile beautifully decorated in the colors of the society, green and pink. On the float are represented the four emblems, the Beehive, the Dove, the Crescent and Stars and the Lilies.

Cheney Brothers can give employment to several girls on light, clean work. Apply Employment Bureau. —Adv.



Stairway to the Plaza, Center Park



We serve the best
Ice Cream in town.
Don't take our word
for it. Try it and
decide for yourself.

Sick room supplies.
Everything that comfort
of a patient wants. Buy
them here and you will
get the best at a moderate price.

PETERSON, The Druggist

Honest Business Methods
and Fair Dealings Have
Built Up Our Business

For Men's, Boys' and
Children's Shoes and
Furnishings of the
Better Kind --- TRY US

A PORTION OF YOUR BUSINESS
IS RESPECTFULLY SOLICITED

GLENNEY & HULTMAN